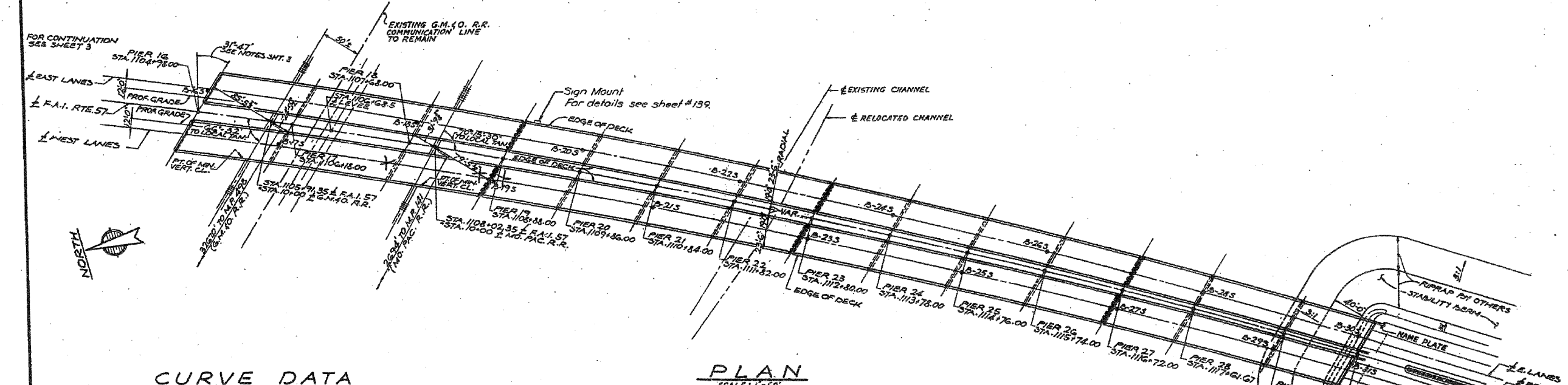
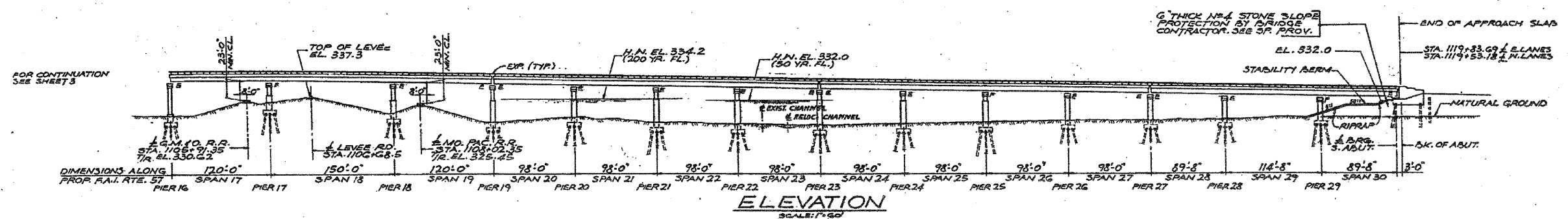
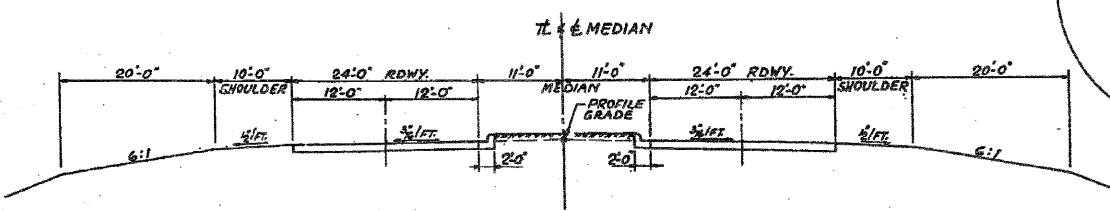


ROUTE NO.	SECTION	COUNTY	TOTAL SHEETS	SHEET NO.
FA157	02-IVB	ALEXANDER	156	4
STA.	TO STA.			
S.P. & REG. NO. 4		BLANKS	PROJECT	



CURVE DATA

± S.B.I. RTE. 150 (RELOC. RTE. 3)		± F.A.I. RTE. 57, ± E. & N. LANES	
PI. STA. 224+29.77	PI. STA. 1112+80.09 (± E LANES)	PI. STA. 1113+21.58 (± F.A.I. RTE. 57)	PI. STA. 1113+63.07 (± N. LANES)
Δ = 58°-58'-15"	Δ = 25°-00'	Δ = 25°-00'	Δ = 25°-00'
D = 1'-20"	D = 0'-36"	D = 0'-36"	D = 0'-36"
R = 4297.18'	R = 9547.34'	R = 9547.34'	R = 9547.34'
T = 2427.77'	T = 2117.04'	T = 2117.04'	T = 2117.04'
L = 4422.81'	L = 4166.67'	L = 4166.67'	L = 4166.67'
E = 639.38'	E = 231.85'	E = 231.85'	E = 231.85'
S.E. = 0.0381/FT.	S.E. = 0.0171/FT.	S.E. = 0.0171/FT.	S.E. = 0.0171/FT.
S.E. ATTAINED STA. 245+56.14 TO STA. 243+56.14 (ROTATED AROUND TL OF MEDIAN)		S.E. ATTAINED STA. 1090+29.72 TO STA. 1092+29.72 STA. 1134+43.05 TO STA. 1132+43.05	
		N. LANES: STA. 1091+12.70 TO STA. 1093+12.70 STA. 1135+46.03 TO STA. 1133+46.03 (ROTATED AROUND MEDIAN EDGE PAVEMENT)	



TYPICAL CROSS-SECTION RELOC. S.B.I. RTE. 150
SCALE: 1" = 10 FT.

GENERAL PLAN AND ELEVATION
F.A.I. RTE. 57 OVER S.B.I. RTE. 150,
EXIST. RTE. 3, G.M. & O. R.R. LEVEL 6 M.R.R.
PROJECT 10-57-1 (91) 1
F.A.I. RTE. 57 SECTION 02-IVB
ALEXANDER COUNTY
STA. 1089+73.00 TO STA. 1119+69.00

ALFRED BENECH & COMPANY
 CIVIL ENGINEERS
 108 S. WASHINGTON ST., ALEXANDER, ILL.

REVISED 10-6-70

FILE NAME =	USER NAME = halsteadw	DESIGNED -	REVISED -	STATE OF ILLINOIS DEPARTMENT OF TRANSPORTATION	ORIGINAL PLANS INFORMATION ONLY	F.A.I. RTE.	SECTION	COUNTY	TOTAL SHEETS	SHEET NO.	
cn\pw_work\pww\DOT\HALSTEADW\d0113592\02-2023-sht-stage.dgn		DRAWN -	REVISED -			57	D9 SMART FY09-2	ALEXANDER	45	41	
PLOT SCALE = 100,0000 ' / IN.		CHECKED -	REVISED -			CONTRACT NO. 78111					
PLOT DATE = 4/2/2009		DATE -	REVISED -			ILLINOIS FED. AID PROJECT					