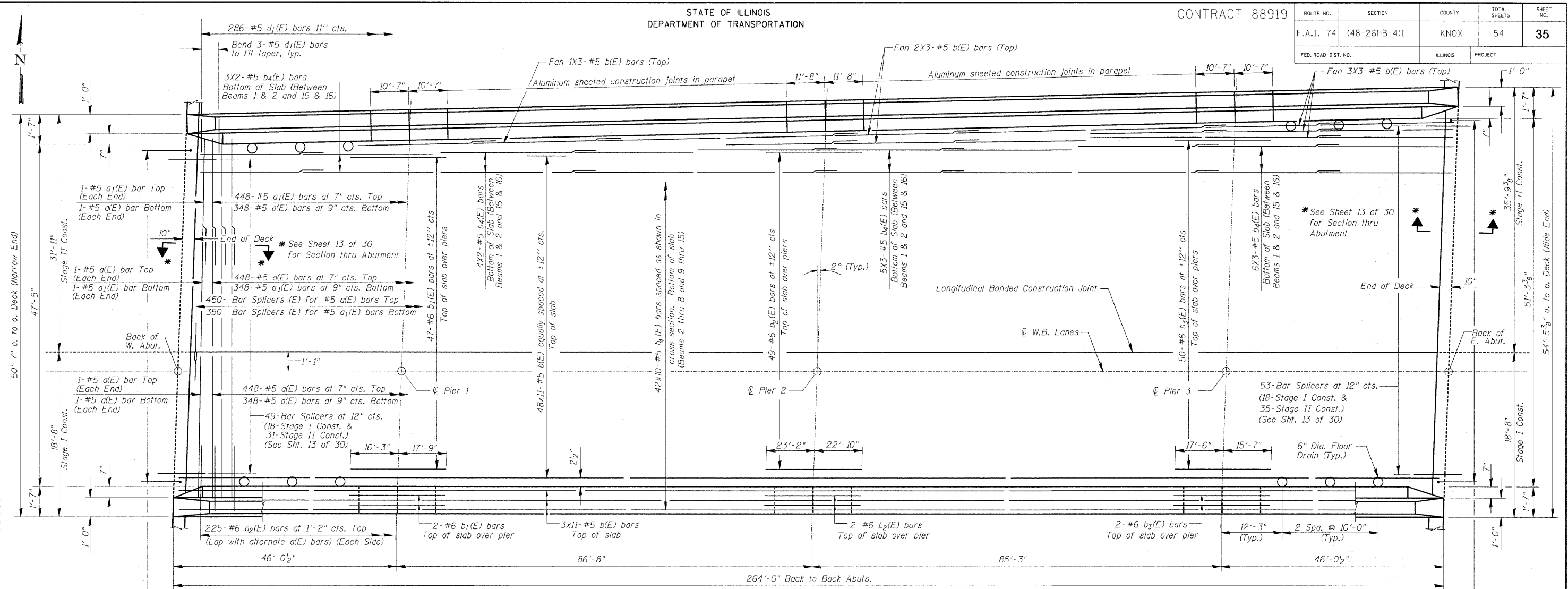
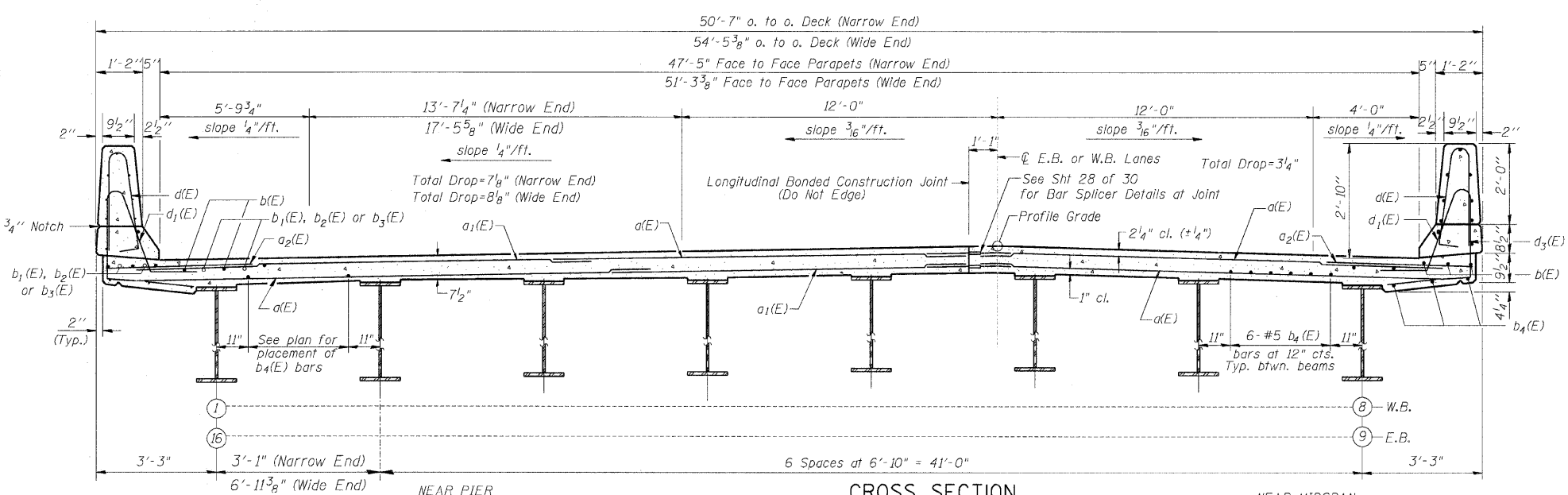


ROUTE NO.	SECTION	COUNTY	TOTAL SHEETS	SHEET NO.
F.A.I. 74	(48-26HB-4)I	KNOX	54	35
FED. ROAD DIST. NO.	ILLINOIS	PROJECT		



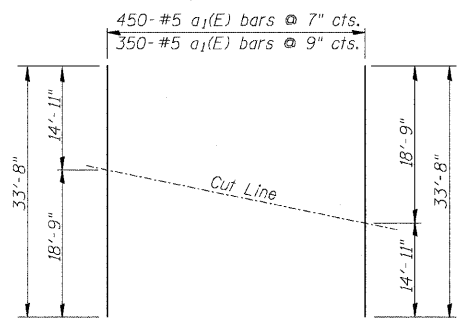
PLAN OF DECK - W.B. STRUCTURE

(E.B. Structure Same by Rotation Through 180° About Sta. 627+71.90 U.S. Rte. 34)



CROSS SECTION

(Looking East - W.B. Structure)
(Looking West - E.B. Structure)



FIELD CUTTING DIAGRAM

Order a1(E) bars full length. Cut as shown. Use upper part of bars in West Bound Slab and lower part of bars in East Bound Slab.

Min. Bar Lap
#5 - 1'-8"
#6 - 2'-0"

Notes: See Sheet 12 of 30 for Superstructure Details, Bill of Material, Parapet Reinforcement. Reinforcement bars designated (E) shall be epoxy coated. Bars indicated thus 48x11-#5 etc. indicates 48 lines of bars with 11 lengths per line. See Sheet 15 of 30 for Hold-Down Bracket at Abutment.

SUPERSTRUCTURE - E.B. & W.B. STRUCTURES

Date	Designed ACW	U.S. ROUTE 34 OVER F.A.I. ROUTE 74 F.A.I. RTE. 74 SECTION (48-26HB-4)I KNOX COUNTY STA. 212+20.71 STRUCTURES NO. 048-0019 (WB) & 048-0020 (EB)	Sheet No.
Revisions	Drawn SRS		11
	Checked KWB		
	Approved KWB		
Prepared by: WVP CORPORATION	Engineers - Architects - Planners Decatur, Illinois - St. Louis, Missouri		WVP Job No. 2100001161.04