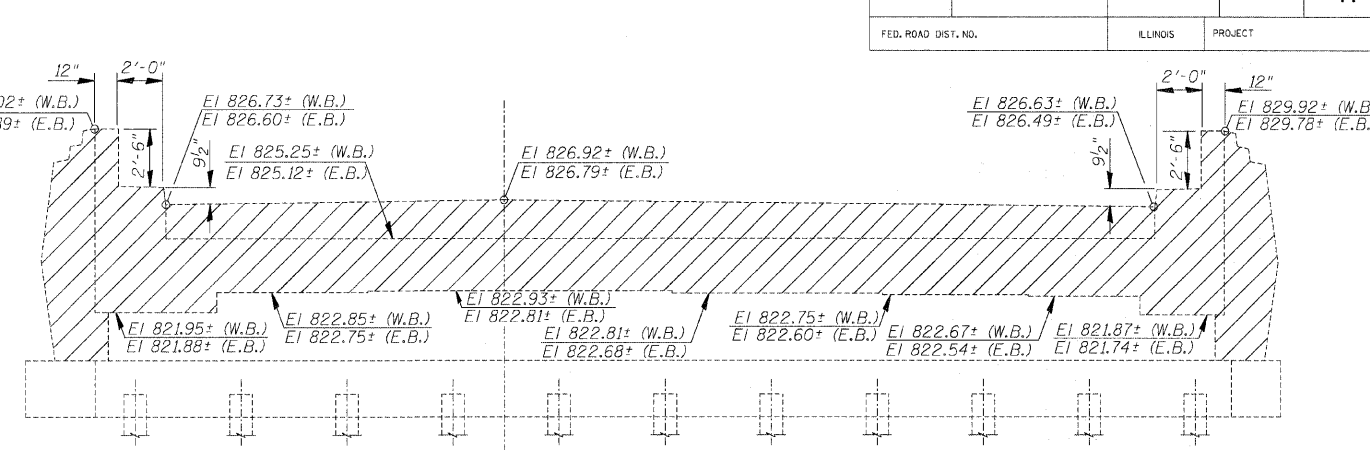
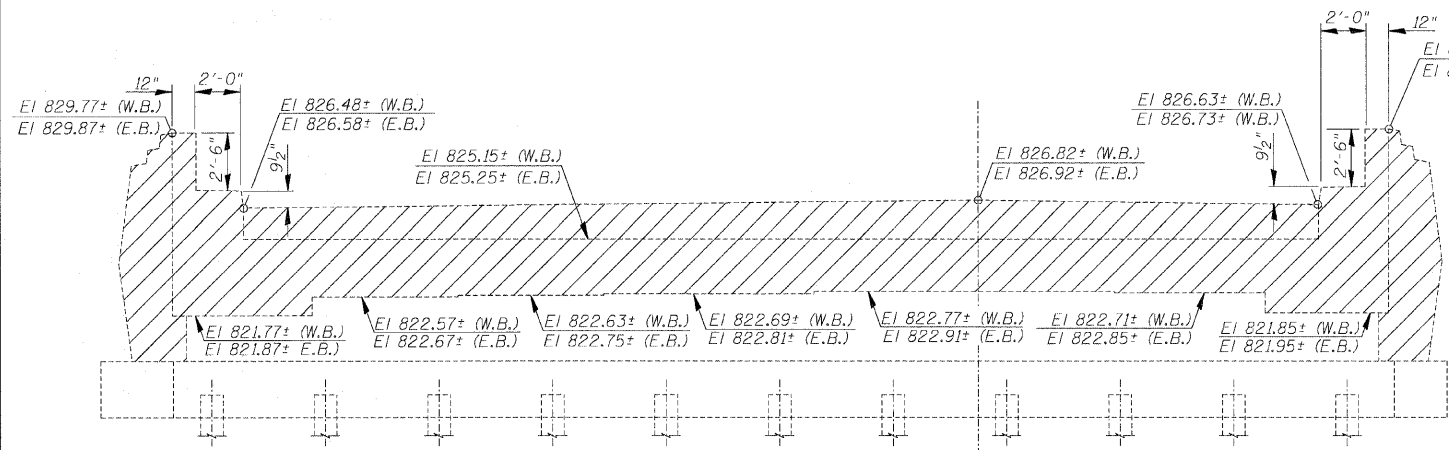


ROUTE NO.	SECTION	COUNTY	TOTAL SHEETS	SHEET NO.
F.A.I. 74	(48-26HB-4)I	KNOX	54	41
FED. ROAD DIST. NO.	ILLINOIS	PROJECT		

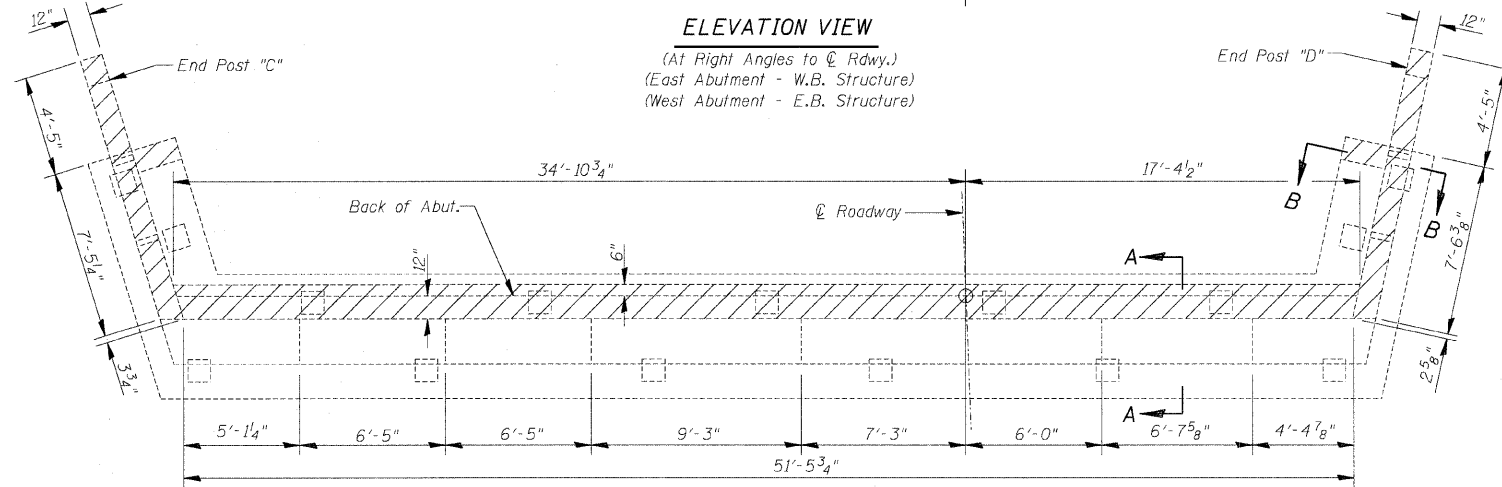


ELEVATION VIEW

(At Right Angles to \bar{C} Rdwy.)
(East Abutment - W.B. Structure)
(West Abutment - E.B. Structure)

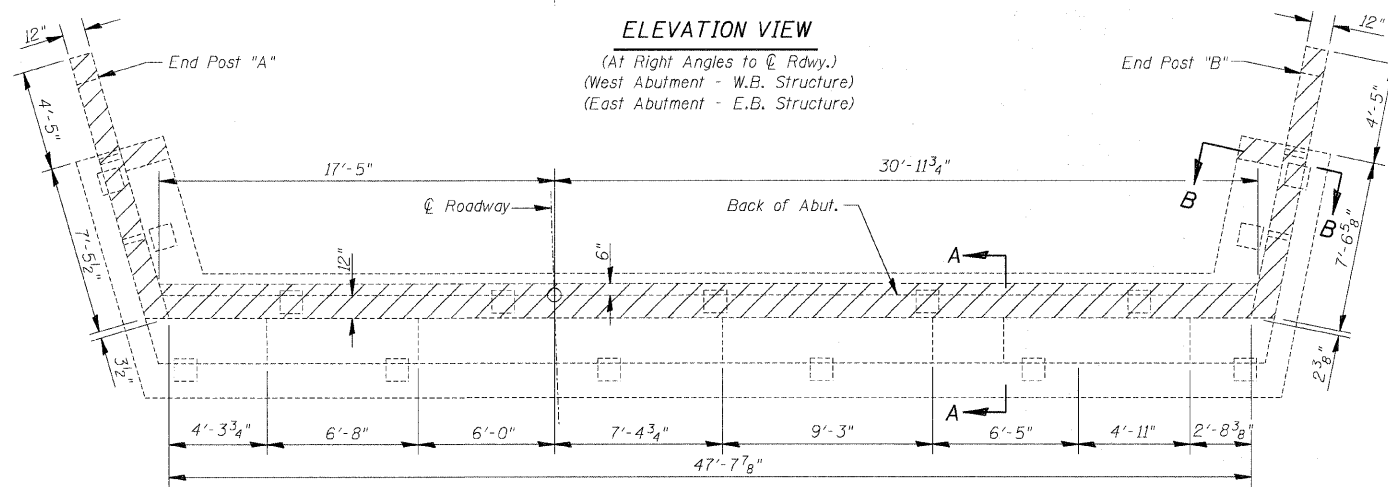
ELEVATION VIEW

(At Right Angles to \bar{C} Rdwy.)
(West Abutment - W.B. Structure)
(East Abutment - E.B. Structure)



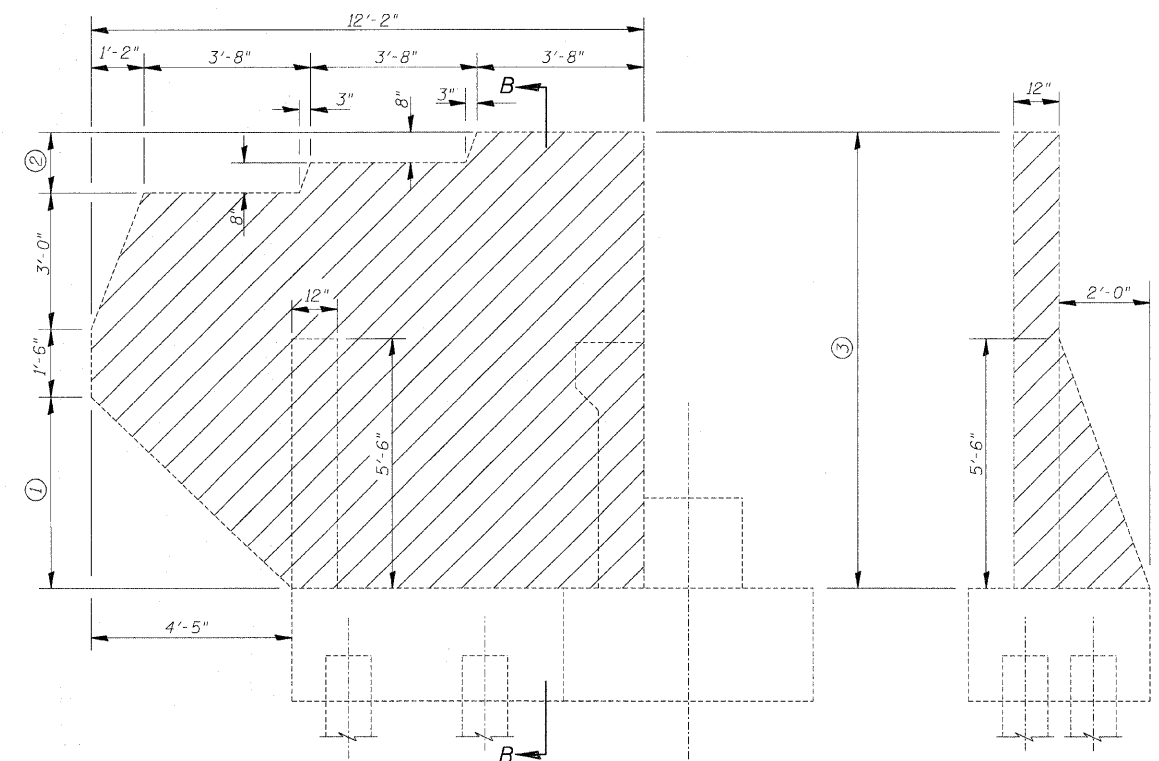
PLAN VIEW

(East Abutment - W.B. Structure)
(West Abutment - E.B. Structure)



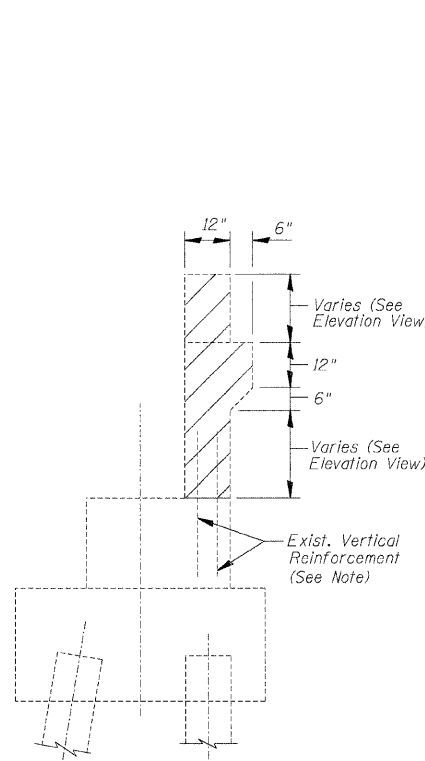
PLAN VIEW

(West Abutment - W.B. Structure)
(East Abutment - E.B. Structure)



WINGWALL ELEVATION

SECTION B-B



SECTION A-A

NOTES

Indicates existing concrete to be removed. Quantity included in Concrete Removal. See Abutment Shts. 20 & 23 of 30 for Quantities.

Remove backwall between inside faces of existing wingwalls to elevation of abutment seat. Vertical bars in existing backwall are to be cleaned and incorporated into new backwall. Cost included with Concrete Removal. Care shall be taken in the removal of the existing concrete so as to avoid damaging the existing vertical reinforcement.

Remove existing wingwalls to top of existing wingwall pile cap.

Cost for removal of railing is included in Concrete Removal.

TABLE FOR END POST DIMENSIONS

END POST	DIM. ①	②	③
A	4'-3 3/8"	1'-4 5/8"	10'-1 3/4"
B	4'-1 7/8"	1'-4 5/8"	10'-0 1/2"
C	4'-1 3/8"	1'-4 5/8"	10'-0"
D	4'-3 3/8"	1'-4 5/8"	10'-1 3/4"

CONCRETE REMOVAL DETAILS

Date	Designed ACW	U.S. ROUTE 34 OVER F.A.I. ROUTE 74 F.A.I. RTE. 74 SECTION (48-26HB-4)I KNOX COUNTY STA. 212+20.71 STRUCTURES NO. 048-0019 (WB) & 048-0020 (EB)	Sheet No.
Revisions	Drawn REZ		17 of 30
	Checked KWB		
	Approved KWB		
Prepared by: WVP CORPORATION A Division of URS Greiner Woodward Clyde	Engineers - Architects - Planners Decatur, Illinois - St. Louis, Missouri	WVP Job No. 2100001161.04	