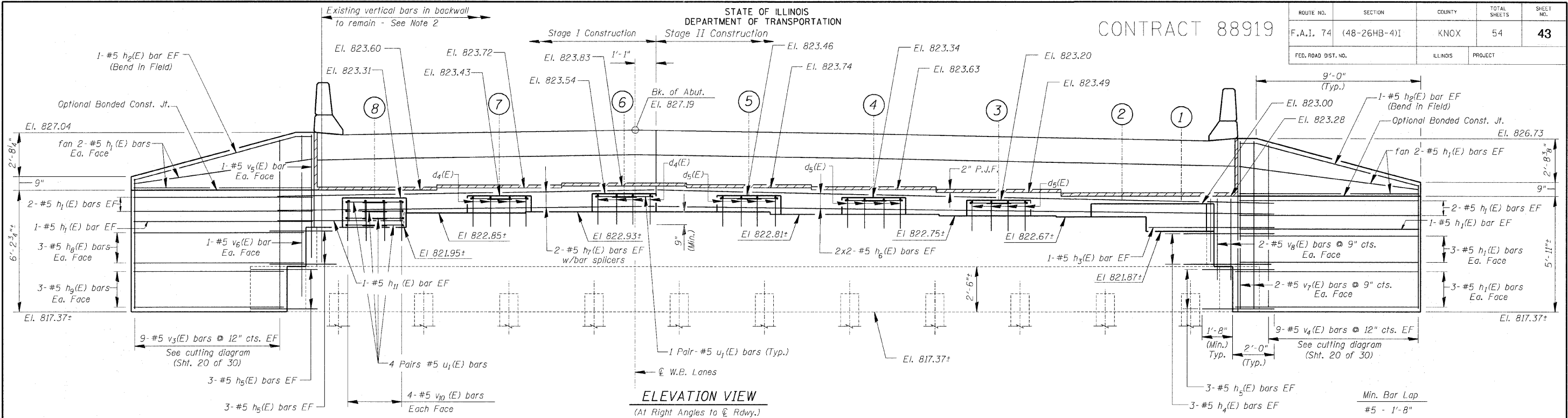
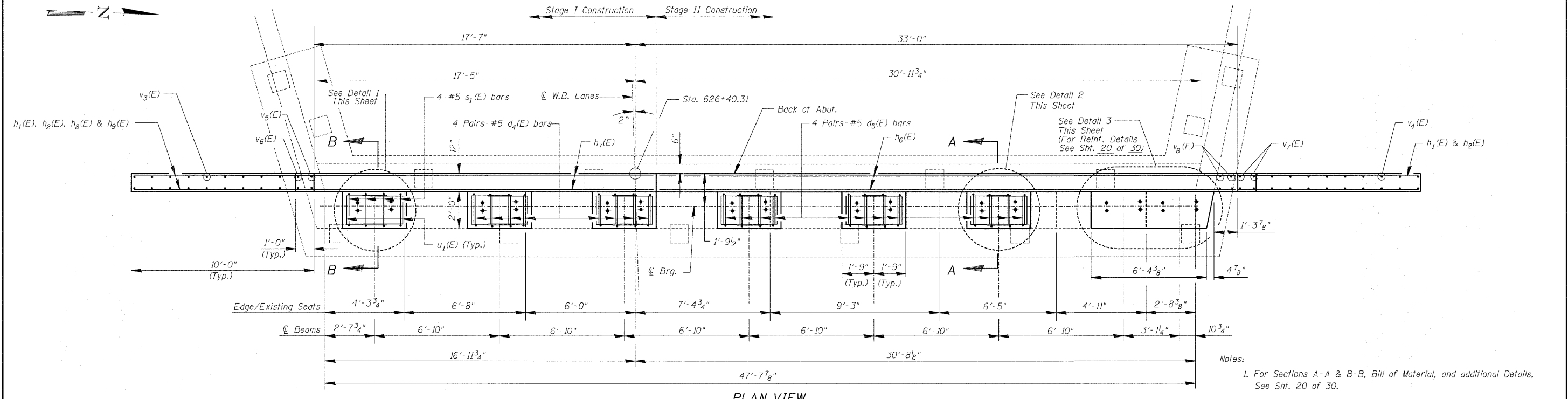


ROUTE NO.	SECTION	COUNTY	TOTAL SHEETS	SHEET NO.
F.A.I. 74	(48-26HB-4)I	KNOX	54	43
FED. ROAD DIST. NO.	ILLINOIS	PROJECT		

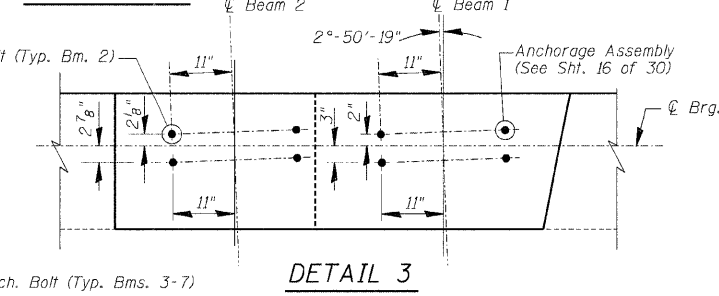
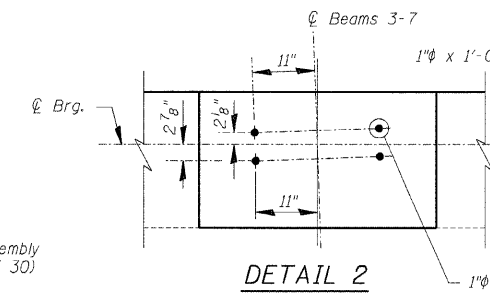
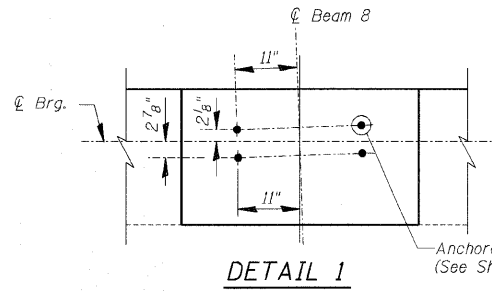


**ELEVATION VIEW**  
(At Right Angles to  $\hat{C}$  Rdwy.)



**PLAN VIEW**

Notes:  
1. For Sections A-A & B-B, Bill of Material, and additional Details, See Sht. 20 of 30.  
2. Existing vertical reinforcement in backwall shall be cleaned, straightened and incorporated into new construction.



**WEST ABUTMENT (W.B.)**

Date	Designed ACW	U.S. ROUTE 34 OVER F.A.I. ROUTE 74 F.A.I. RTE. 74 SECTION (48-26HB-4)I KNOX COUNTY STA. 212+20.71 STRUCTURES NO. 048-0019 (WB) & 048-0020 (EB)	Sheet No.
Revisions	Drawn DCS		<b>19</b> of 30
	Checked KWB		
	Approved KWB		
	Prepared by: <b>WVP CORPORATION</b> A Division of URS Greiner Woodward Clyde		
	Engineers - Architects - Planners Decatur, Illinois - St. Louis, Missouri	WVP Job No. <b>2100001161.04</b>	