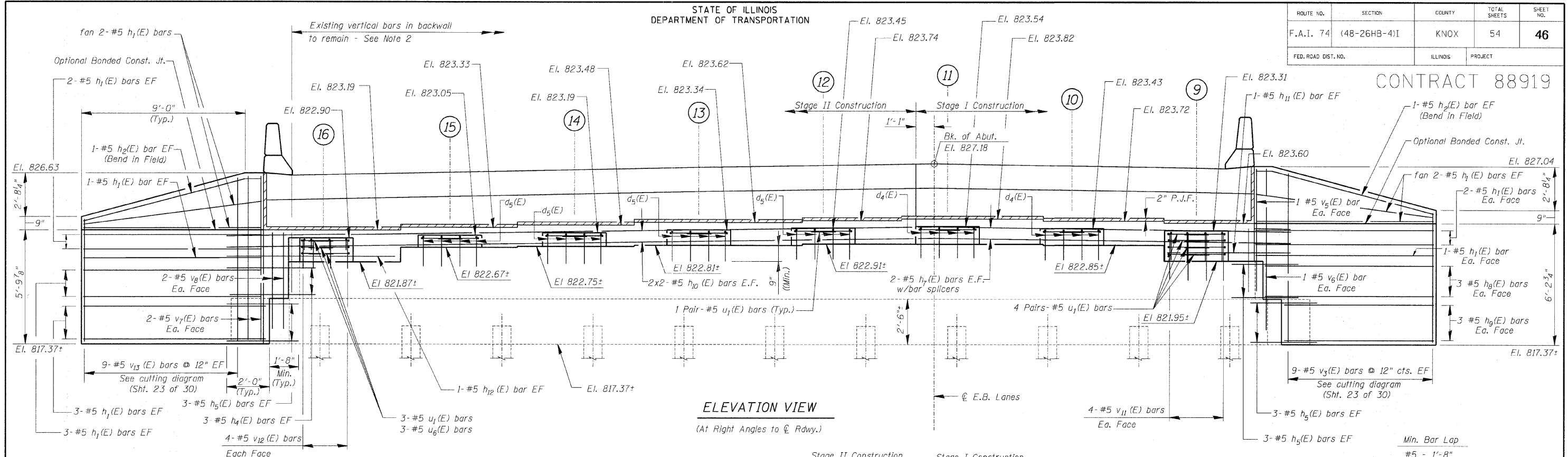
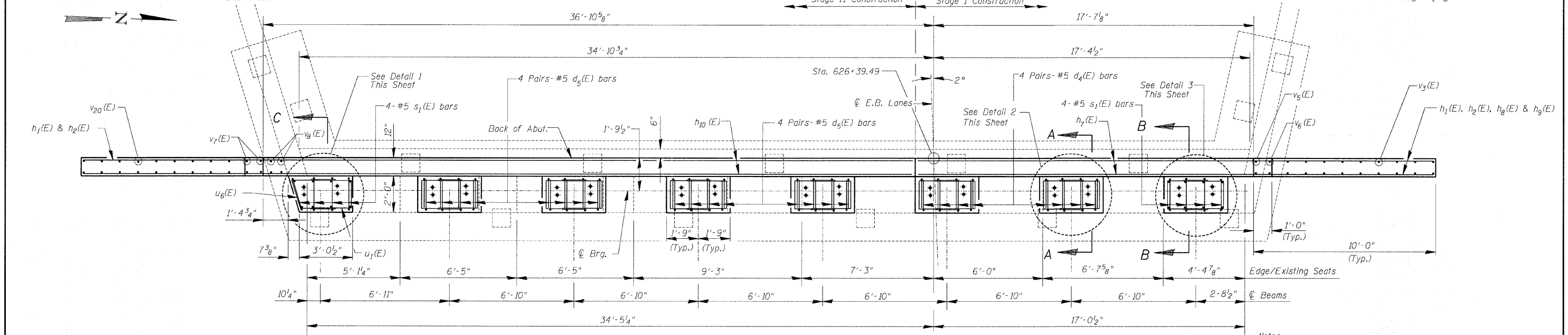


ROUTE NO.	SECTION	COUNTY	TOTAL SHEETS	SHEET NO.
F.A.I. 74	(48-26HB-4)I	KNOX	54	46
FED. ROAD DIST. NO.	ILLINOIS	PROJECT		

CONTRACT 88919

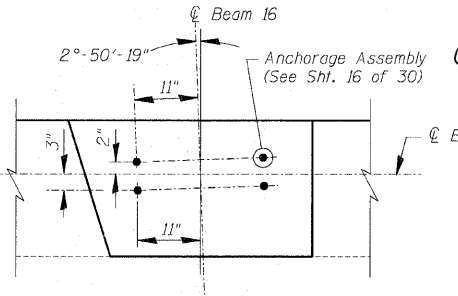


ELEVATION VIEW
(At Right Angles to C.Rdwy.)

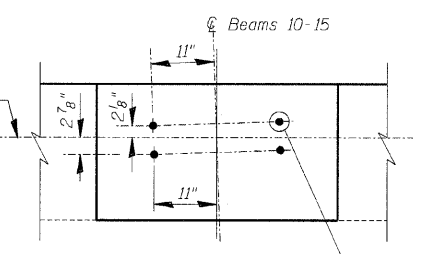


PLAN VIEW

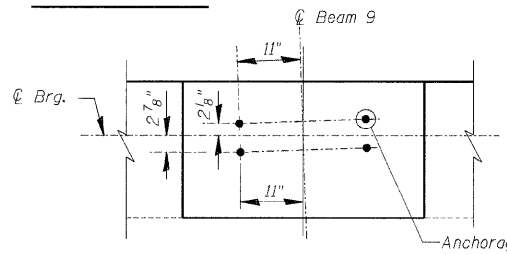
- Notes:
- For Sections A-A, B-B & C-C, Bill of Material, and additional Details, See Sht. 23 of 30.
 - Existing vertical reinforcement in backwall shall be cleaned, straightened and incorporated into new construction.



DETAIL 1



DETAIL 2



DETAIL 3

WEST ABUTMENT (E.B.)

Date	Designed ACW	U.S. ROUTE 34 OVER F.A.I. ROUTE 74 F.A.I. RTE. 74 SECTION (48-26HB-4)I KNOX COUNTY STA. 212+20.71 STRUCTURES NO. 048-0019 (WB) & 048-0020 (EB)	Sheet No.
Revisions	Drawn DCS		<div style="font-size: 2em; font-weight: bold; text-align: center;">22</div> of 30
	Checked KWB		
	Approved KWB		
Prepared by: WVP CORPORATION		Engineers - Architects - Planners Deatur, Illinois - St. Louis, Missouri	WVP Job No. 210000161.04