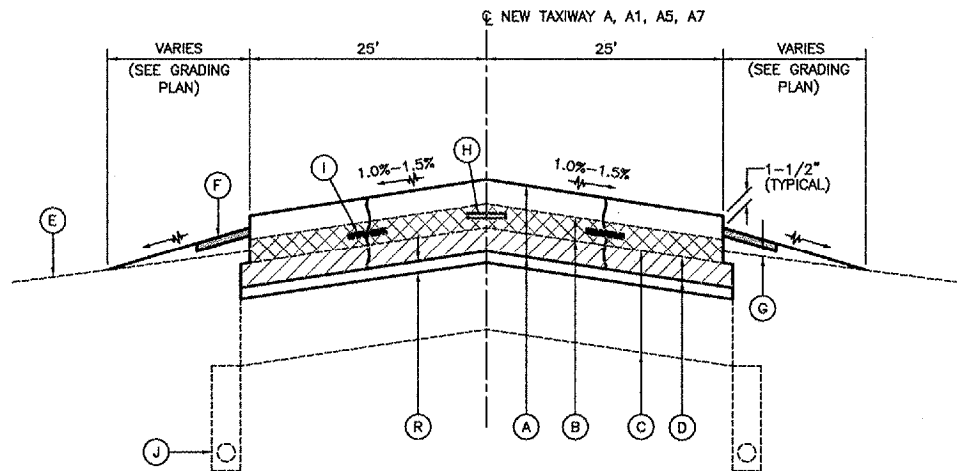
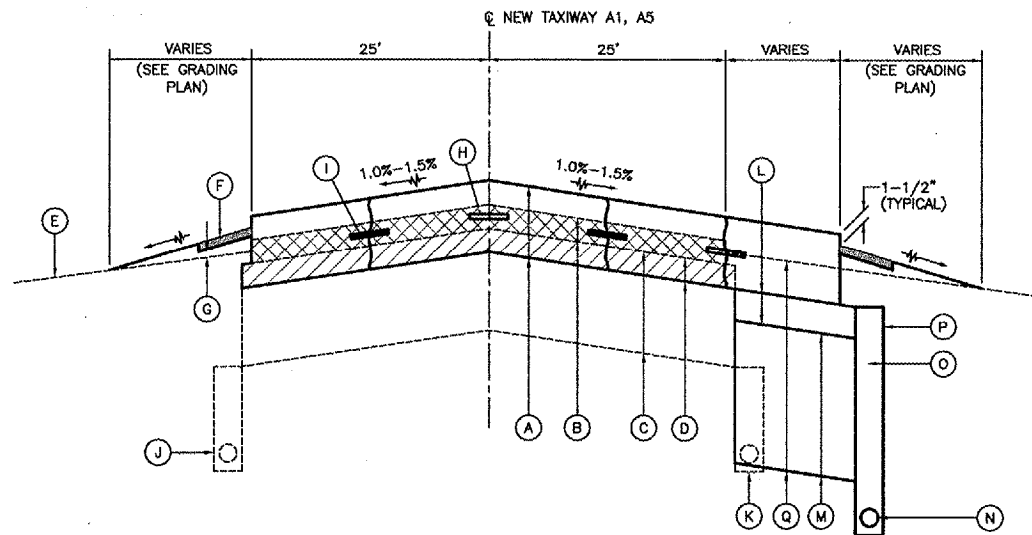


K:\Aurora\p\0428505 Tax A Ends Rehab\PH2\Draw\3
 FILE: ph2-typsec.dwg
 LAYOUT: Layout1
 UPDATE BY: mkatz
 SURVEY BOOK #
 DATE: Mon 4/14/08 1:38pm
 XREF DWG: tbcint.dwg
 tb.dwg
 tyend-base.dwg



**TAXIWAY A EAST, A1, A5 AND A7
 TYPICAL SECTION A-A**
 NOT TO SCALE

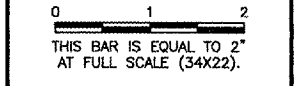


**TAXIWAY A/A1 AND A/A5 FILLET WIDENING
 TYPICAL SECTION B-B**
 NOT TO SCALE

- LEGEND**
- (A) NEW 9" P.C.C. PAVEMENT (501)
 - (B) EXISTING BITUMINOUS PAVEMENT TO BE REMOVED (VARIABLE DEPTH 4"-12")(SEE NOTE 5)
 - (C) EXISTING CRUSHED AGGREGATE BASE COURSE (VARIABLE DEPTH; 13" @ TAXIWAY A1 AND 18" @ TAXIWAY A5 AND A7)
 - (D) EXISTING CRUSHED AGGREGATE BASE COURSE TO BE REMOVED AND PAID FOR AS UNCLASSIFIED EXCAVATION (152) (VARIABLE DEPTH)(SEE NOTE 1)
 - (E) EXISTING GROUNDLINE
 - (F) NEW 6" WIDE SOD (904)(SEE NOTE 2)
 - (G) NEW TOPSOIL PLACEMENT (MINIMUM 4")(905)
 - (H) NEW DOWEL BAR (501)
 - (I) NEW TIE BAR (501)
 - (J) EXISTING UNDERDRAIN TO REMAIN
 - (K) EXISTING UNDERDRAIN TO BE REMOVED (TRENCH SHALL BE BACKFILLED WITH CRUSHED AGGREGATE BACKFILL (208). INCIDENTAL TO UNDERDRAIN REMOVAL)
 - (L) NEW 4" CRUSHED AGGREGATE BASE COURSE (209)
 - (M) NEW 18" CRUSHED AGGREGATE BASE COURSE PLACEMENT (SEE NOTE 3)
 - (N) NEW 6" UNDERDRAIN W/ SOCK (705)
 - (O) NEW POROUS BACKFILL (INCIDENTAL TO UNDERDRAIN)(705)
 - (P) NEW UNDERDRAIN TRENCH FABRIC ENVELOPE (INCIDENTAL TO UNDERDRAIN)(705)
 - (Q) NEW UNCLASSIFIED EXCAVATION (152)
 - (R) LEVELING COURSE IN AREAS OF VARIABLE DEPTH BITUMINOUS PAVEMENT REMOVAL (AR800081) (INCIDENTAL TO AR800081)

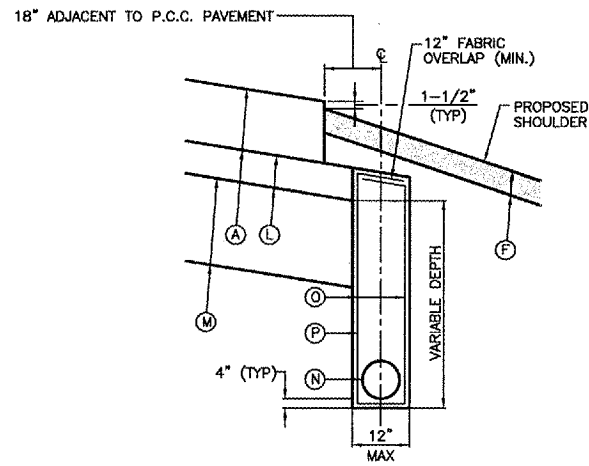
REVISIONS

NUMBER	BY	DATE



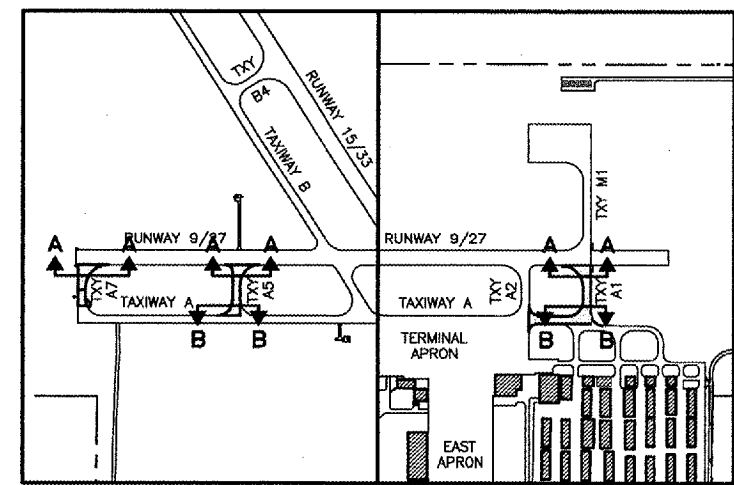
**AURORA MUNICIPAL AIRPORT
 AURORA, ILLINOIS
 REHABILITATE AND STRENGTHEN TAXIWAY ALPHA
 ENDS AND CONNECTING TAXIWAYS - PHASE 2**

TYPICAL SECTIONS



**UNDERDRAIN DETAIL
 EDGE OF FILLET
 WIDENING PAVEMENT AREAS**
 NOT TO SCALE

- NOTES**
- GRADING AND RE-COMPACTING OF EXISTING CRUSHED AGGREGATE BASE COURSE SHALL BE INCIDENTAL TO CRUSHED AGGREGATE BASE COURSE REMOVAL.
 - SHOULDER SHALL BE DISCED OR SCARIFIED PRIOR TO PLACEMENT OF TOPSOIL. MAXIMUM PAY WIDTH FOR SOD SHALL BE 6'-0".
 - CONTRACTOR SHALL REUSE EXISTING CRUSHED AGGREGATE BASE BEING REMOVED. PAYMENT SHALL BE PER 152 EMBANKMENT IN PLACE.
 - ALL PROPOSED UNDERDRAIN AT EDGE OF PAVEMENT SHALL BE INSTALLED AFTER THE 9" P.C.C. PAVEMENT IS CONSTRUCTED.
 - SEE EXISTING CONDITION SHEETS FOR AREAS TO BE PAID FOR AS AR800081 - REMOVE BITUMINOUS PAVEMENT (VAR. DEPTH) OR AR401900 - REMOVE BITUMINOUS PAVEMENT.



KEY MAP

© Copyright, Conf., Inc.
CMT
 CRAWFORD, MURPHY & TILLY, INC.
 CONSULTING ENGINEERS
 License No. 184-000813

DESIGN BY:			
DRAWN BY:	JRO		
CHECKED BY:	CAL		
APPROVED BY:			
DATE:	10/31/07		
JOB No:	07285-04		
ILLINOIS PROJECT: ARR-3770 A.I.P. PROJECT: 3-17-0003-B36 FINAL SUBMITTAL			
SHEET 6 OF 23 SHEETS			