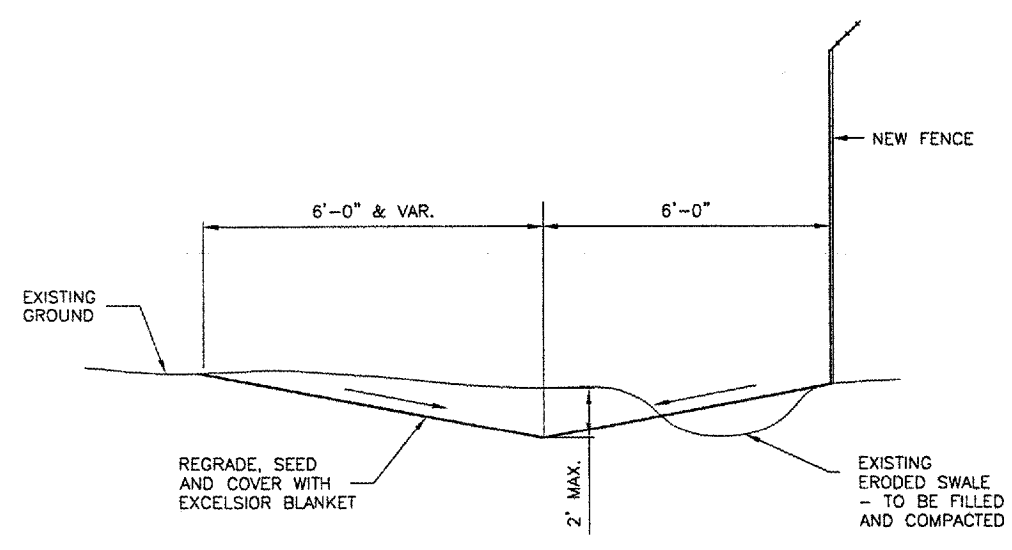
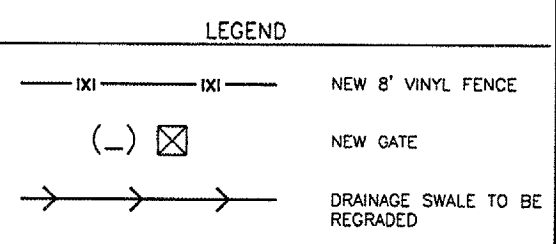
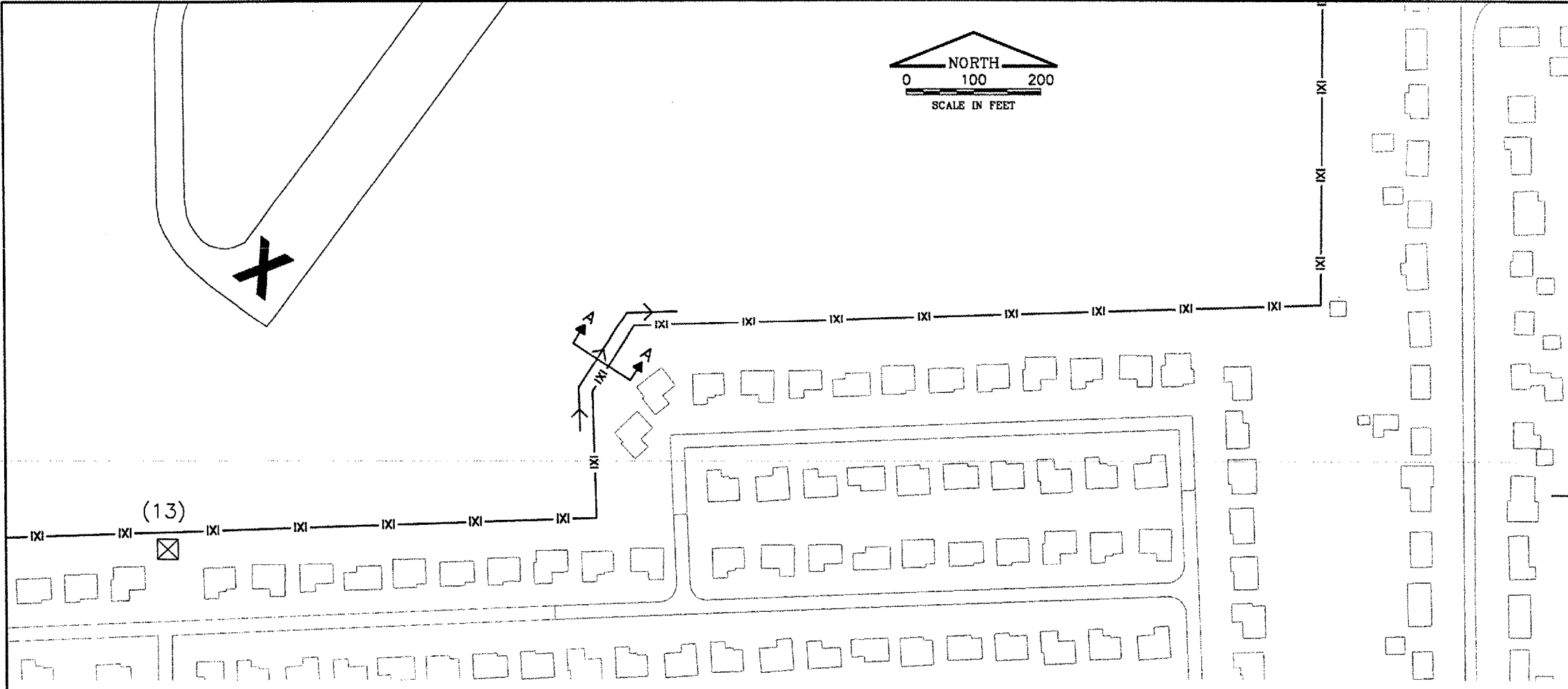
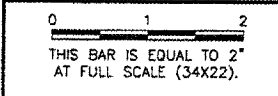


KEYMAP

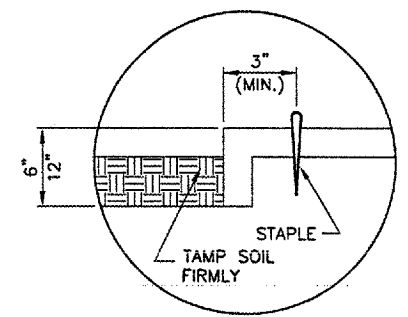
K:\Bloomington\0708506\Draw\Sheets
 FILE: PROP.EROSION.dwg
 UPDATE BY: Chris Groth
 PLOT DATE: 4/16/2008 7:59 PM
 surveytopo
 BASE_EXISTGEO
 Security-Bose
 KEYMAP

BL062

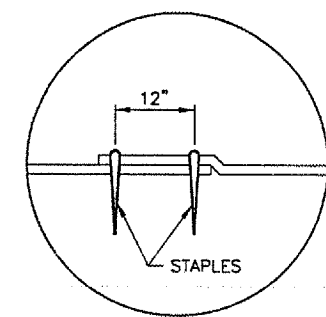
REVISIONS		
NUMBER	BY	DATE



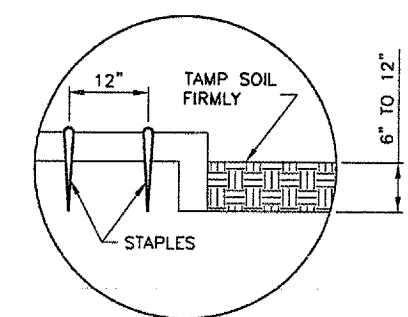
SECTION A-A
REGRADE SWALE
 N.T.S.



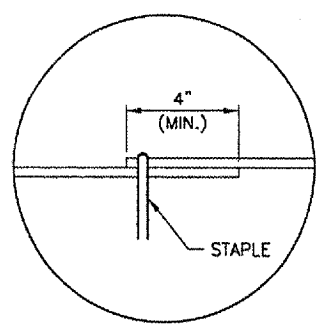
DETAIL 1 - TERMINAL FOLD



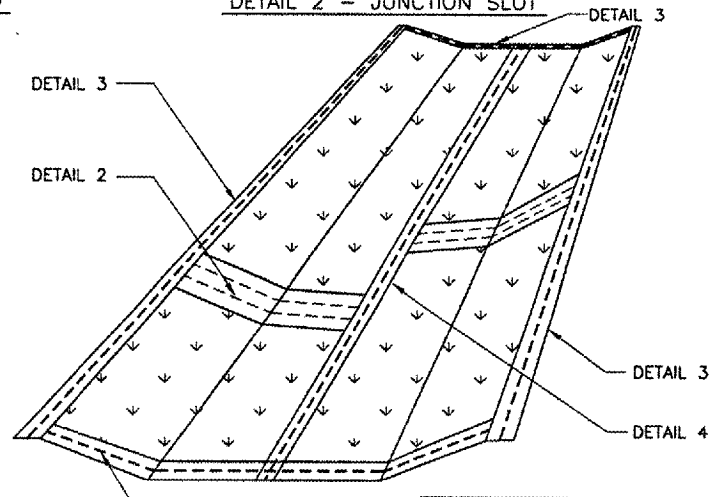
DETAIL 2 - JUNCTION SLOT



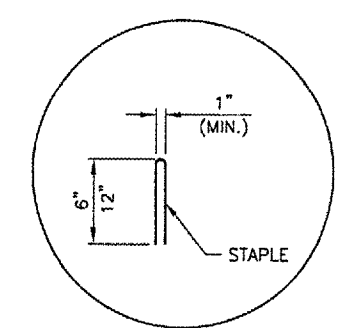
DETAIL 3 - ANCHOR SLOT



DETAIL 4 - LAP JOINT



EXCELSIOR BLANKET DETAILS
 N.T.S.



DETAIL 5 - STAPLE DETAIL

NOTES:

1. REGRADE AREA TO PROVIDE POSITIVE DRAINAGE.
2. 400 SY OF REGRADE SWALE AND EXCELSIOR BLANKET HAVE BEEN ADDED TO THE PROJECT TO COVER THIS LOCATION AND SIMILAR AREAS THAT MAY EXIST. LOCATIONS TO BE AS DIRECTED BY ENGINEER.

NOTES

1. STAPLES TO BE PLACED ALTERNATELY, IN COLUMNS APPROXIMATELY 2' APART AND IN ROWS APPROXIMATELY 3' APART.
2. EROSION CONTROL MATERIAL SHALL BE PLACED LOOSELY OVER GROUND SURFACE. DO NOT STRETCH.
3. ALL TERMINAL ENDS AND TRANSVERSE LAPS SHALL BE STAPLED AT APPROXIMATELY 12" INTERVALS.

BLOOMINGTON-NORMAL AIRPORT AUTHORITY
CENTRAL ILLINOIS REGIONAL AIRPORT
BLOOMINGTON, ILLINOIS

UPGRADE PERIMETER FENCE PHASE 2

PROPOSED EROSION IMPROVEMENTS AND DETAILS

© Copyright CMT, Inc.
CMT
 CRAWFORD, MURPHY & TILLY, INC.
 CONSULTING ENGINEERS
 License No. 84-000613

DESIGN BY:	CRG
DRAWN BY:	CMT
CHECKED BY:	CRG
APPROVED BY:	RLW
DATE:	MAY 9, 2008
JOB No:	0708506

BMI-3599
 3-17-0006-XX