

K:\Springfield\0703510\Draw\Sheets
 FILE: EXCOND.dwg
 UPDATE BY: Chris Groh
 PLOT DATE: 4/16/2008 3:12 PM
 SPI-BASE
 SPI-BASE-1
 KEYMAP
 Uts98
 EXISTING

CA005

REVISIONS		
NUMBER	BY	DATE

0 1 2
 THIS BAR IS EQUAL TO 2"
 AT FULL SCALE (34X22).



SPRINGFIELD AIRPORT AUTHORITY
 ABRAHAM LINCOLN CAPITAL AIRPORT
 SPRINGFIELD, ILLINOIS

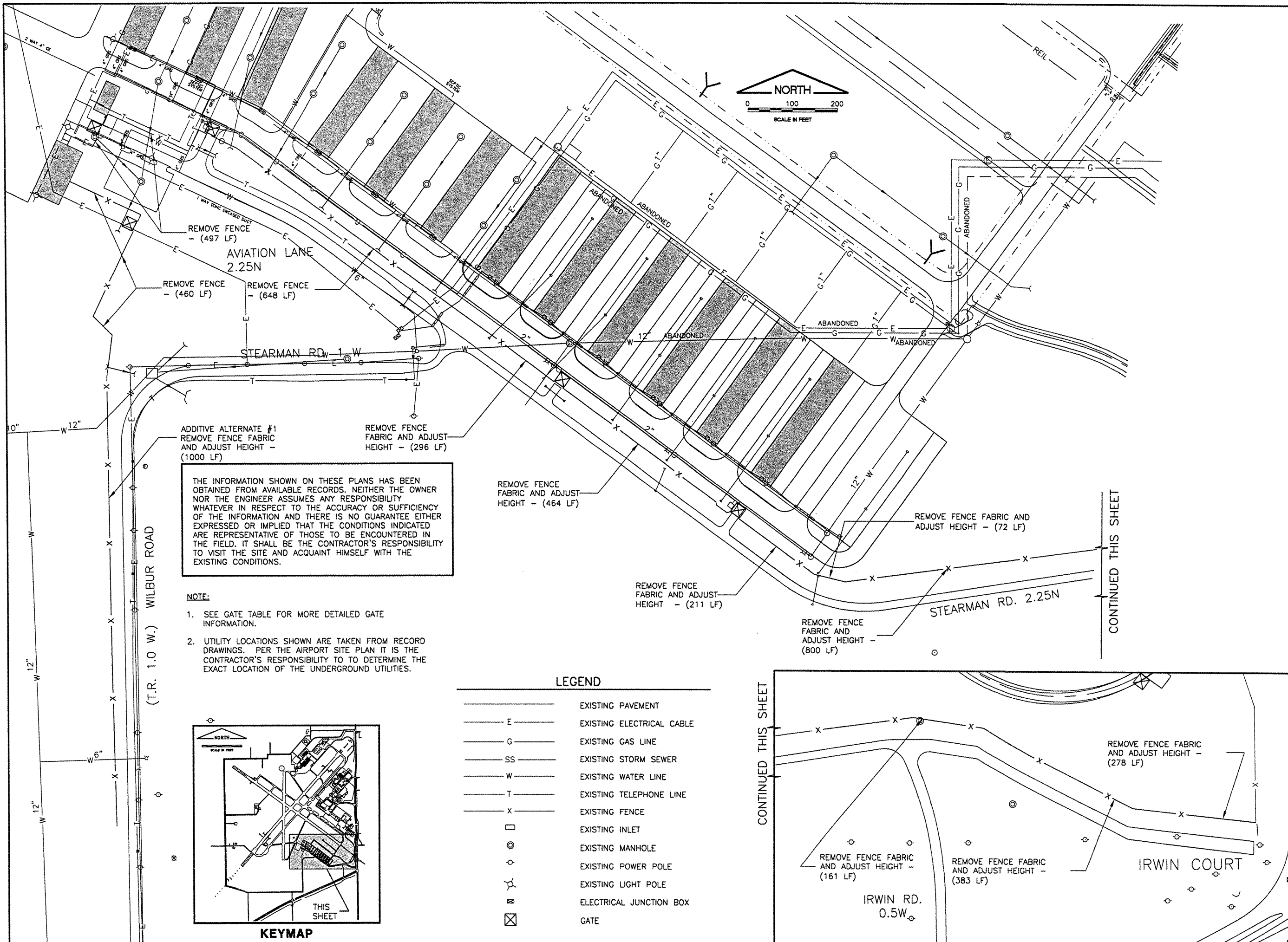
UPGRADE PERIMETER FENCE PHASE 1

EXISTING CONDITIONS AND REMOVALS

© Copyright CMT, Inc.
CMT
 CRAWFORD, MURPHY & TILLY, INC.
 CONSULTING ENGINEERS
 License No. 84-000613



DESIGN BY:	CBG
DRAWN BY:	CMT
CHECKED BY:	CISC
APPROVED BY:	RVN
DATE:	MAY 9, 2008
JOB No:	07035-10
IL PROJ. NO. SPI-3775	
AIP PROJ. NO. 3-17-0096-XX	
SHEET 06 OF 12 SHEETS	

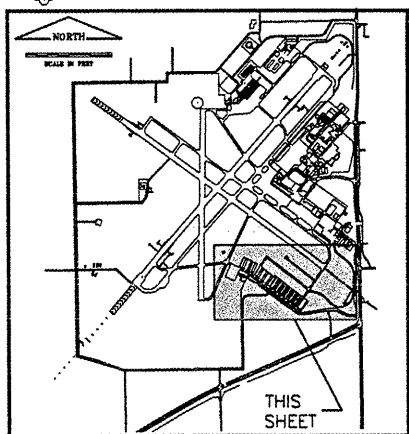


THE INFORMATION SHOWN ON THESE PLANS HAS BEEN OBTAINED FROM AVAILABLE RECORDS. NEITHER THE OWNER NOR THE ENGINEER ASSUMES ANY RESPONSIBILITY WHATEVER IN RESPECT TO THE ACCURACY OR SUFFICIENCY OF THE INFORMATION AND THERE IS NO GUARANTEE EITHER EXPRESSED OR IMPLIED THAT THE CONDITIONS INDICATED ARE REPRESENTATIVE OF THOSE TO BE ENCOUNTERED IN THE FIELD. IT SHALL BE THE CONTRACTOR'S RESPONSIBILITY TO VISIT THE SITE AND ACQUAINT HIMSELF WITH THE EXISTING CONDITIONS.

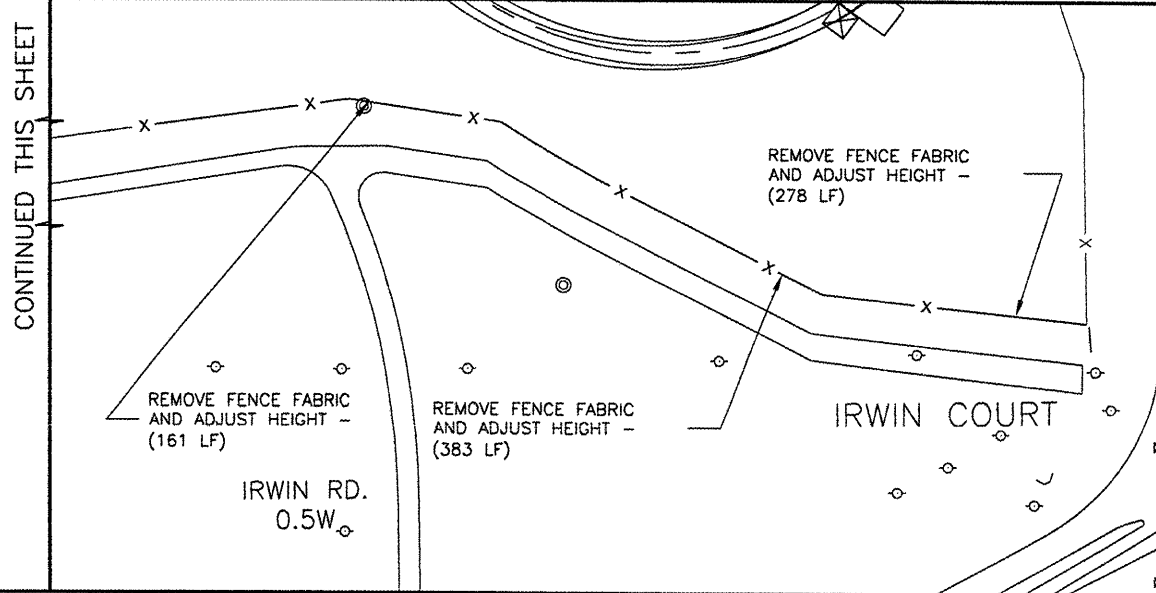
- NOTE:**
- SEE GATE TABLE FOR MORE DETAILED GATE INFORMATION.
 - UTILITY LOCATIONS SHOWN ARE TAKEN FROM RECORD DRAWINGS. PER THE AIRPORT SITE PLAN IT IS THE CONTRACTOR'S RESPONSIBILITY TO DETERMINE THE EXACT LOCATION OF THE UNDERGROUND UTILITIES.

LEGEND

—	EXISTING PAVEMENT
— E —	EXISTING ELECTRICAL CABLE
— G —	EXISTING GAS LINE
— SS —	EXISTING STORM SEWER
— W —	EXISTING WATER LINE
— T —	EXISTING TELEPHONE LINE
— X —	EXISTING FENCE
□	EXISTING INLET
⊙	EXISTING MANHOLE
⊙	EXISTING POWER POLE
⊙	EXISTING LIGHT POLE
⊙	ELECTRICAL JUNCTION BOX
⊗	GATE



KEYMAP



CONTINUED THIS SHEET

CONTINUED THIS SHEET