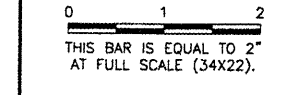


CA006

REVISIONS		
NUMBER	BY	DATE



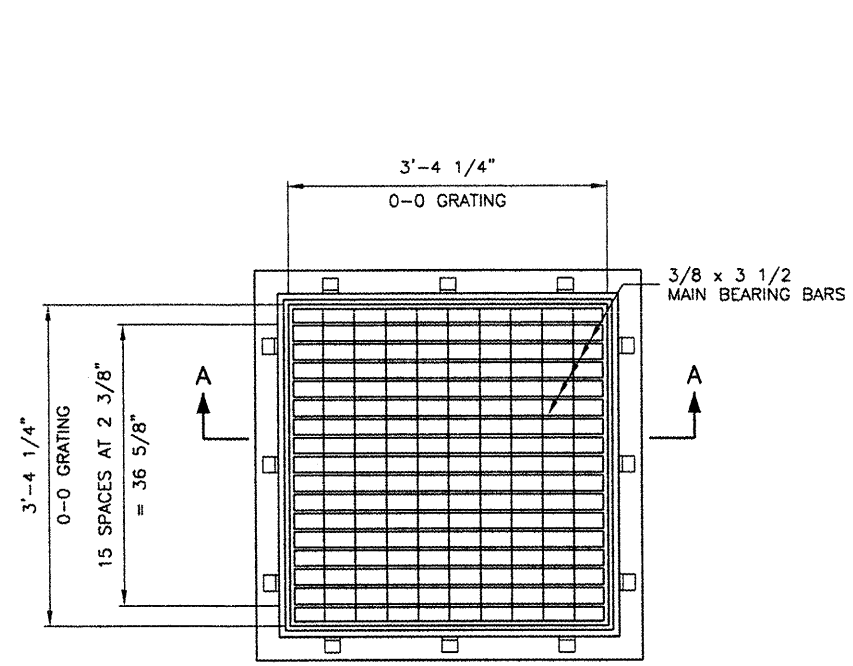
**SPRINGFIELD AIRPORT AUTHORITY**  
**ABRAHAM LINCOLN CAPITAL AIRPORT**  
**SPRINGFIELD, IL**

**TXG WIDENING-PHASE 1 REALIGN NORTH PERIMETER ROAD**

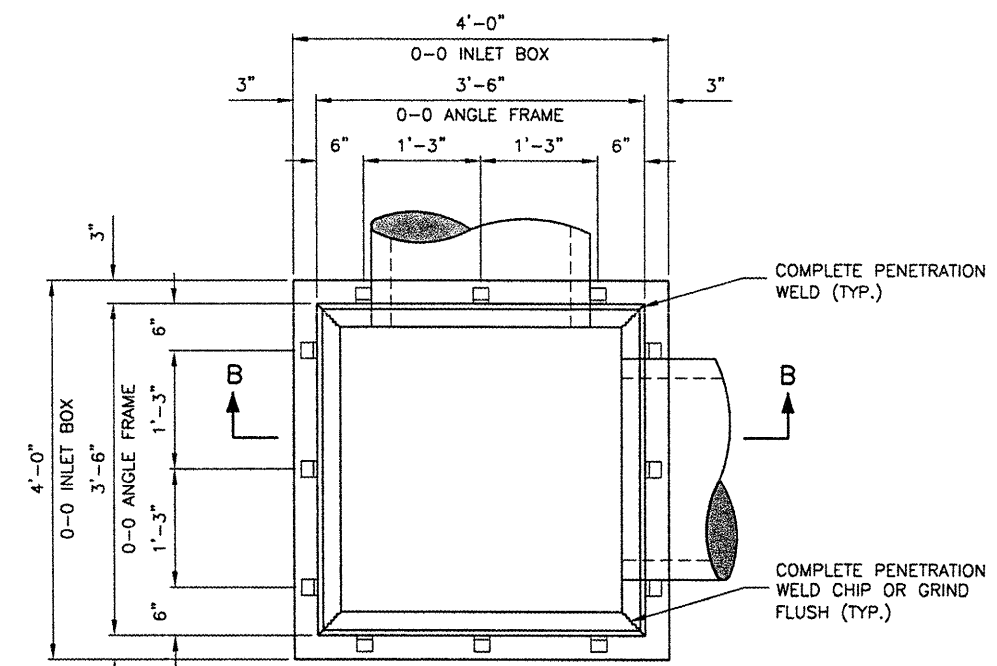
**INLET DETAILS**

© Copyright CMT, Inc.  
**CMT**  
 CRAWFORD, MURPHY & TILLY, INC.  
 CONSULTING ENGINEERS  
 License No. 94-006613

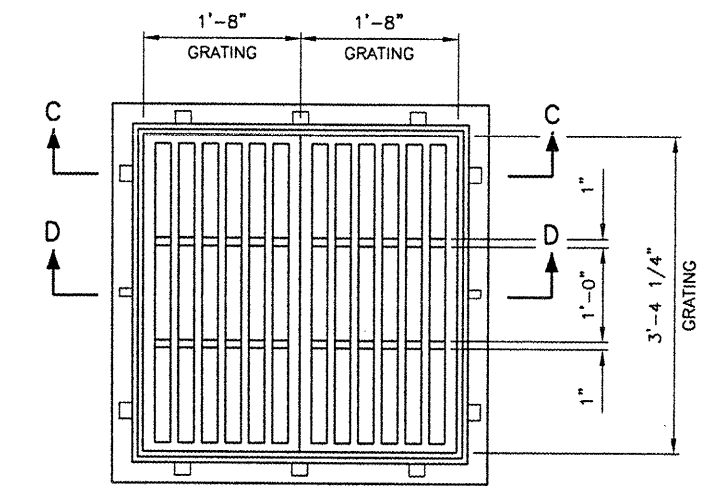
DESIGN BY:	CBG
DRAWN BY:	DPA/JLR
CHECKED BY:	CBG
APPROVED BY:	RZLV
DATE:	APRIL 25, 2008
JOB No:	07035-09-00
IL PROJ. NO.	SPI-3789
AIP PROJ. NO.	3-17-0096-XX
SHEET	11 OF 22 SHEETS



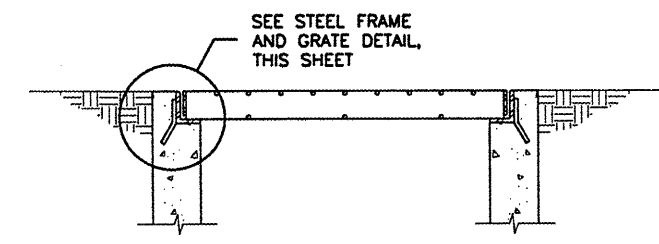
**PLAN**  
N.T.S.



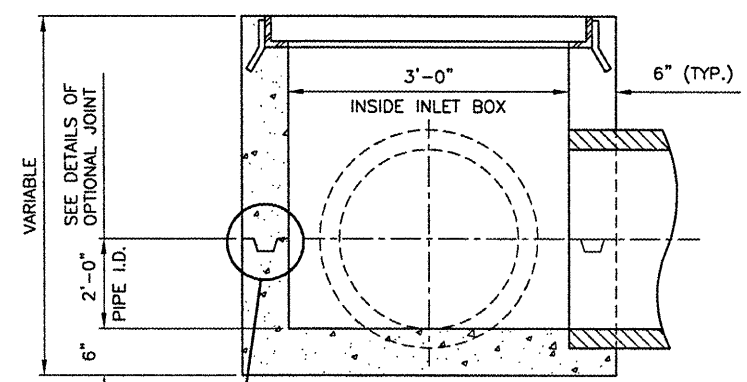
**PLAN**  
N.T.S.



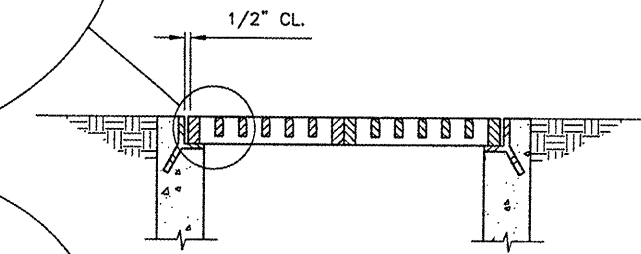
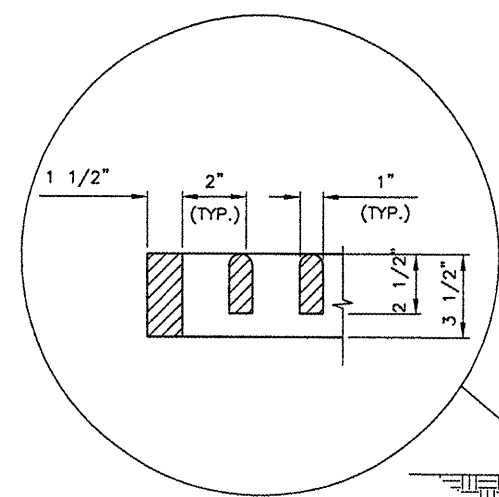
**PLAN**  
N.T.S.



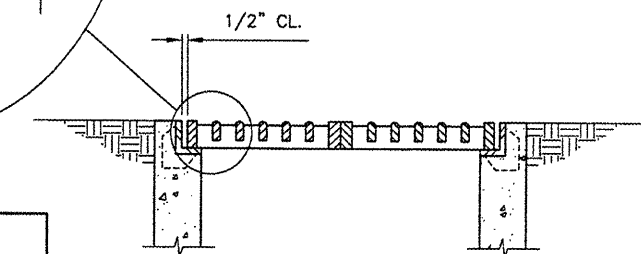
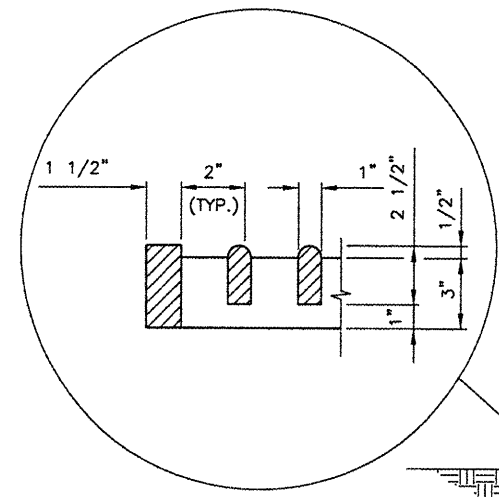
**SECTION A-A**  
N.T.S.



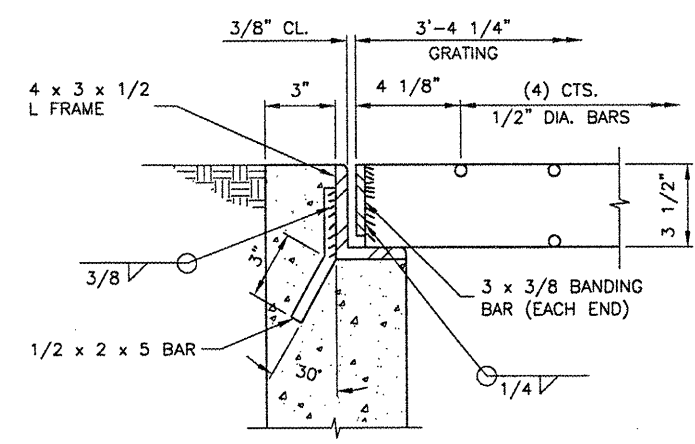
**SECTION B-B**  
N.T.S.



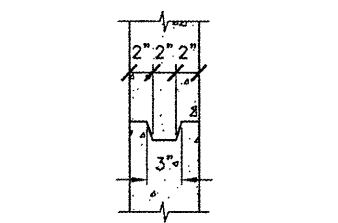
**SECTION C-C**  
N.T.S.



**SECTION D-D**  
CAST FRAME AND GRATE DETAIL  
N.T.S.



**STEEL FRAME AND GRATE DETAIL**  
N.T.S.



**OPTIONAL JOINT DETAIL**  
N.T.S.

**NOTE:**  
 INLET IS AN IDOT STD. 542546, FLUSH  
 INLET BOX FOR MEDIAN. FRAME &  
 GRATES ARE NEENAH R-3807 OR  
 APPROVED EQUAL.