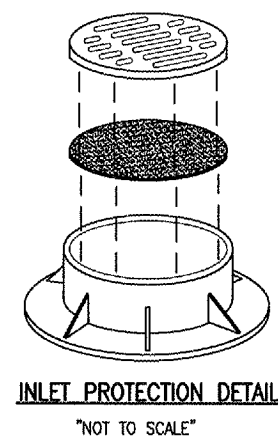
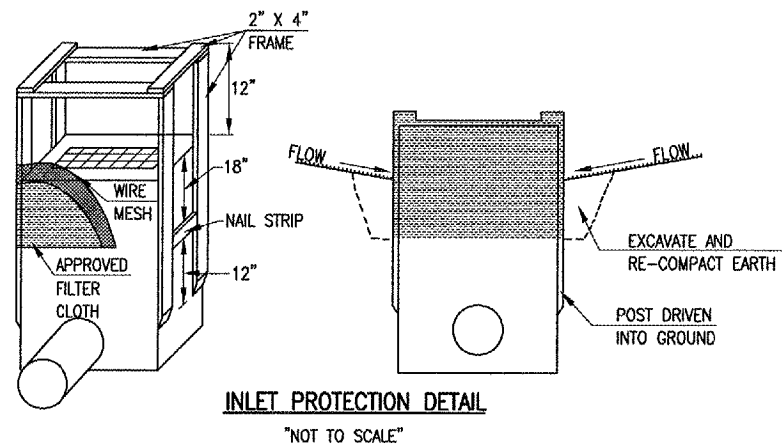


MATCHLINE STA. 164+25

APR 17, 2008 4:49 PM HARRI01115 E:\AIRPORTS\DECATUR\07A0169\CADD\AIRPORT\1\SHEET\1-R-13\SWPPP.DWG - 150+50 TO 164+25

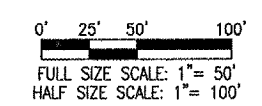
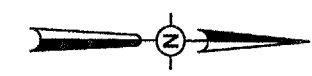


**NOTES**

1. FILTER WRAP TO BE PLACED IN ALL PROPOSED AND EXISTING INLETS LOCATED IN PAVED AREAS.
2. FABRIC SHALL BE IN CONFORMANCE WITH MATERIALS SPECIFIED FOR EROSION CONTROL FENCING.
3. FABRIC SHALL OVERLAY FRAME BY 2" MIN.
4. THE CONTRACTOR SHALL CLEAR DEBRIS AND SILT AS REQUIRED FROM FABRIC TO MAINTAIN DRAINAGE THROUGH THE STRUCTURE.
5. FABRIC SHALL REMAIN IN PLACE UNTIL TURFED AREAS HAVE DEVELOPED A MIN. OF 80% COVERAGE.
6. INLET PROTECTION WILL NOT BE PAID FOR SEPARATELY BUT SHALL BE CONSIDERED INCIDENTAL TO THE CONTRACT AND NO ADDITIONAL COMPENSATION ALLOWED.

**LEGEND**

- EXISTING PAVEMENT
- PROPOSED BITUMINOUS PAVEMENT
- EXISTING STORM SEWER
- PROPOSED INLET PROTECTION
- EXISTING INLET



DATE	REVISION	BY



DECATUR, ILLINOIS

IL PROJ.: DEC-3799 A.L.P. PROJ.: 3-17-0833-XX

LEI Project No. 07A0169D_0802	LAYOUT	MLH	04/03/08
Filename: R-13\SWPPP.DWG	DRAWN	MLH	04/03/08
Scale 1"=50'	REVIEWED	JDW	04/17/08
Date 04/18/08			



Hanson Professional Services Inc.  
1525 South Sixth Street  
Springfield, Illinois 62703-2896  
Offices Nationwide

RECONSTRUCT  
TAXIWAY "A" AND  
ADJACENT GA APRON  
PROPOSED STORMWATER  
POLLUTION PREVENTION PLAN  
STA. 150+50 TO STA. 164+25