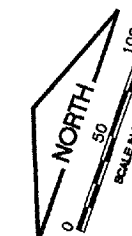
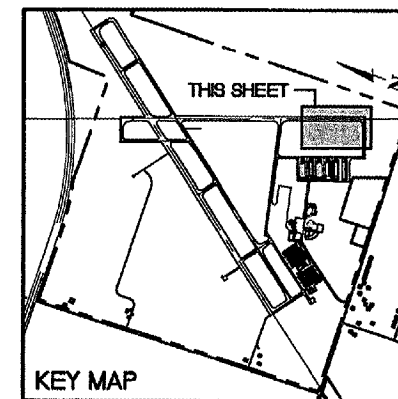


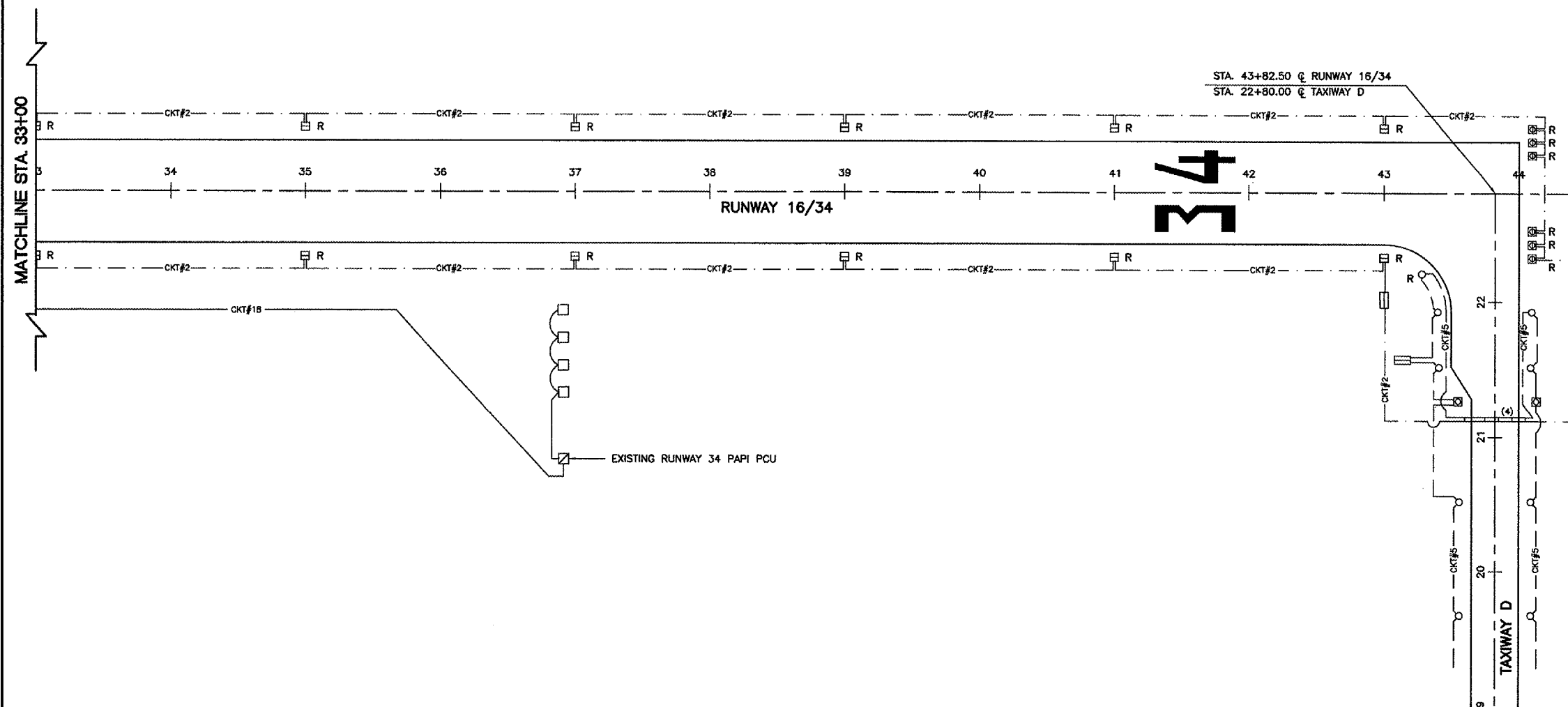
KA036

K:\kankakee\p\0707502\Draw\Sheets
 FILE: Econd-3.dwg
 LAYOUT: Layout1
 UPDATE BY: Jim Ohse
 SURVEY BOOK #
 DATE: Thursday, April 17, 2008 2:18:51 PM
 XREF DWG: tbcint.dwg
 tb.dwg
 elec-base.dwg



REVISIONS		
NUMBER	BY	DATE

0 1 2
 THIS BAR IS EQUAL TO 2"
 AT FULL SCALE (34X22).



SEE EXISTING CONDITIONS/PROPOSED REMOVALS
 SHEET 6 FOR LEGEND AND NOTES

THE INFORMATION SHOWN ON THESE PLANS HAS BEEN OBTAINED FROM AVAILABLE RECORDS. NEITHER THE OWNER NOR THE ENGINEER ASSUMES ANY RESPONSIBILITY WHATSOEVER IN RESPECT TO THE ACCURACY OR SUFFICIENCY OF THE INFORMATION AND THERE IS NO GUARANTEE EITHER EXPRESSED OR IMPLIED THAT THE CONDITIONS INDICATED ARE REPRESENTATIVE OF THOSE TO BE ENCOUNTERED IN THE FIELD. IT SHALL BE THE CONTRACTOR'S RESPONSIBILITY TO VISIT THE SITE AND ACQUAINT HIMSELF WITH THE EXISTING CONDITIONS.

**GREATER KANKAKEE AIRPORT
 KANKAKEE, ILLINOIS
 REHABILITATE AIRFIELD LIGHTING SYSTEM -
 RUNWAY 16/34 AND TAXIWAY H
 EXISTING CONDITIONS/PROPOSED REMOVALS
 RUNWAY 16/34
 STA. 33+00 TO STA. 44+00**

© Copyright CMT, Inc.
CMT
 CRAWFORD, MURPHY & TILLY, INC.
 CONSULTING ENGINEERS
 License No. 84-000618

DESIGN BY:	MND
DRAWN BY:	JRO
CHECKED BY:	MND
APPROVED BY:	
DATE:	02/29/08
JOB No:	07075-02
IL PROJECT:	IKK-3743
A.I.P. PROJECT:	3-17-0057-B13