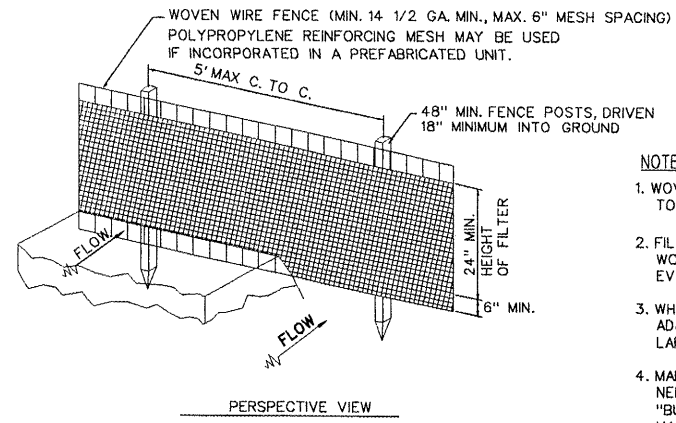
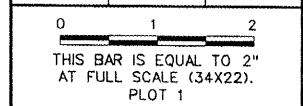
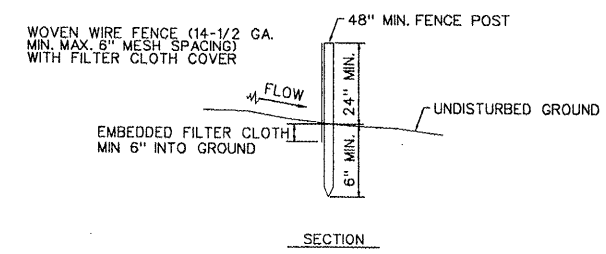


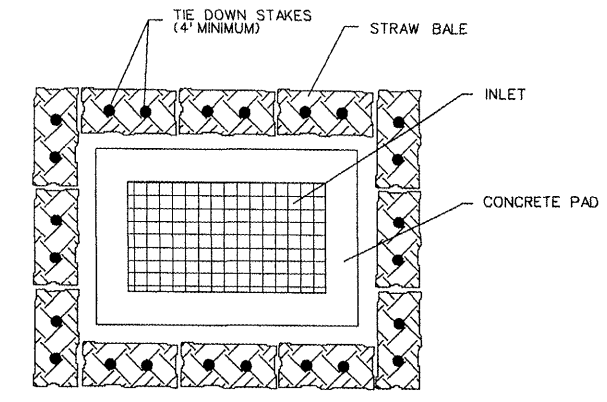
REVISIONS		
NUMBER	BY	DATE



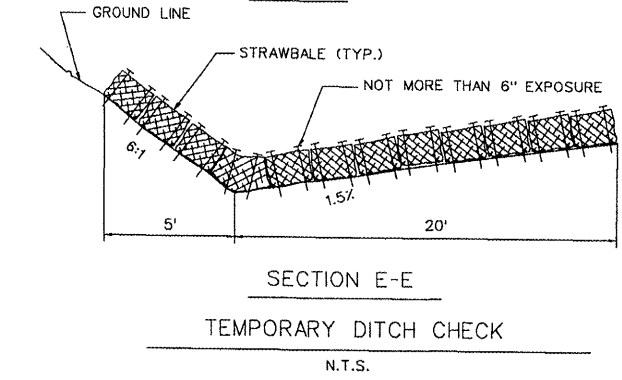
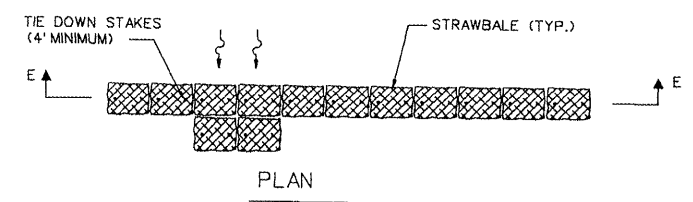
- NOTES:**
1. WOVEN WIRE FENCE TO BE FASTENED SECURELY TO FENCE POSTS WITH WIRE TIES OR STAPLES.
 2. FILTER CLOTH TO BE FASTENED SECURELY TO WOVEN WIRE FENCE WITH TIES SPACED EVERY 24" AT TOP AND MID SECTION.
 3. WHEN TWO SECTIONS OF FILTER CLOTH ADJOIN EACH OTHER THEY SHALL BE OVERLAPPED BY 6" MIN. AND FOLDED.
 4. MAINTENANCE SHALL BE PERFORMED AS NEEDED AND MATERIAL REMOVED WHEN "BULGES" DEVELOP IN THE SILT FENCE. MAINTENANCE, WHICH INCLUDES THE REPLACEMENT OF DAMAGED FENCE SHALL BE CONSIDERED INCIDENTAL TO THE COST OF THE EROSION CONTROL FENCE.



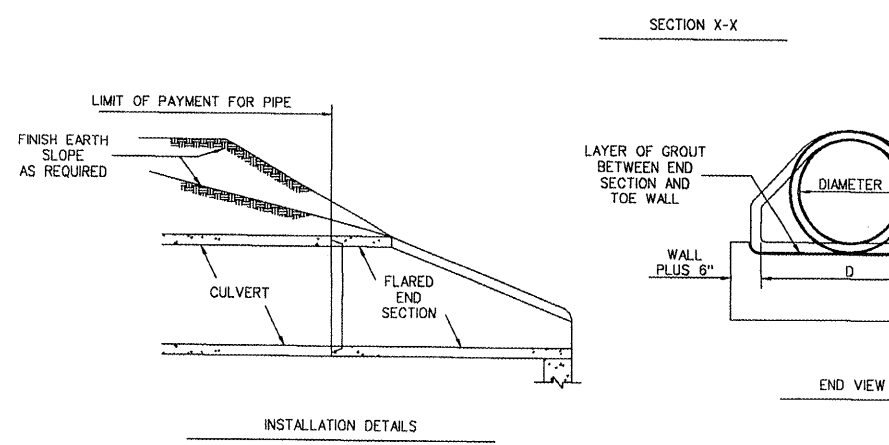
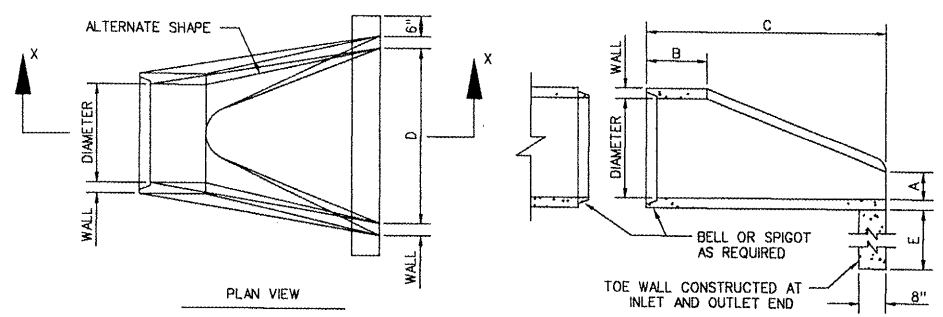
EROSION CONTROL FABRIC FENCE DETAIL
N.T.S.



INLET EROSION PROTECTION DETAIL
NOT TO SCALE

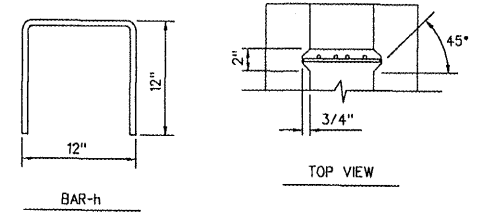


SECTION E-E
TEMPORARY DITCH CHECK
N.T.S.



ADJOINING PIPE DIA. INCHES	REINFORCEMENT			
	BARREL SECTION REINFORCEMENT		FLARE SECTION REINFORCEMENT (ONE LAYER ONLY IN CENTER OF WALL)	
	CIRCULAR	ELLIPTICAL	AREA OF LONGITUDINAL SQ. IN./LIN. FT.	AREA OF TRAVERSE SQ. IN./LIN. FT.
12	0.07		0.048	0.048
15	0.07		0.054	0.054
18	0.07	0.07	0.060	0.060
21	0.07	0.07	0.066	0.066
24	0.07	0.07	0.072	0.072
27	0.13		0.078	0.078
30	0.14		0.084	0.084
36	0.12	0.09	0.096	0.096
42	0.15	0.12	0.108	0.108
48	0.18	0.14	0.120	0.120
54	0.22	0.16	0.132	0.132
60	0.25	0.19	0.144	0.144
66	0.31	0.23	0.156	0.156

DIMENSIONS						
DIA.	WALL	A	B (MIN.)	C (MIN.)	D	E
12"	2"	4"	4'-0"	6'	2'-0"	18"
15"	2-1/4"	6"	3'-10"	6'	2'-6"	18"
18"	2-1/2"	9"	3'-10"	6'	3'-0"	18"
21"	2-3/4"	9"	3'-2"	6'	3'-6"	18"
24"	3"	9-1/2"	2'-6"	6'	4'-0"	24"
27"	3-1/4"	10-1/2"	2'-1"	6'	4'-6"	24"
30"	3-1/2"	1'-0"	1'-7"	6'	5'-0"	24"
36"	4"	1'-3"	2'-10"	8'	6'-0"	24"
42"	4-1/2"	1'-9"	2'-11"	8'	6'-6"	24"
48"	5"	2'-0"	2'-2"	8'	7'-0"	24"
54"	5-1/2"	2'-3"	2'-11"	8'	7'-6"	36"
60"	6"	2'-6"	3'-3"	8'	8'-0"	36"
66"	6-1/2"	2'-0"	1'-9"	8'	8'-6"	36"



PRECAST CONCRETE FLARED END SECTION
N.T.S.

INSIDE DIAMETER OF SEWER (INCHES)	MAXIMUM TRENCH WIDTH
6	3'-2"
8	3'-2"
10	3'-2"
12	3'-4"
15	3'-6"
18	3'-10"
21	4'-4"
24	4'-8"
27	4'-11"
30	5'-3"
33	6'-0"
36	6'-4"
42	6'-11"
48	7'-6"
54	8'-7"
60	9'-2"
66	9'-9"
72	10'-4"
78	10'-11"
84	11'-6"
90	12'-1"
96	12'-8"
102	13'-3"
108	13'-10"

NOTE:
CONTRACTOR SHALL COMPACT FILL 2' ABOVE PROPOSED TOP OF PIPE ELEVATION PRIOR TO EXCAVATION OF PIPE TRENCH. BACKFILL PAVED AREAS WITH SELECT GRANULAR MATERIAL 2' ABOVE THE TOP OF PIPE. BACKFILL NON-PAVED AREAS WITH ORIGINALLY EXCAVATED FILL.

STORM SEWER TRENCH DETAILS
N.T.S.

GREATER Peoria REGIONAL Airport
 CONSTRUCT NEW PERIMETER ROAD AND PERIMETER FENCE - PROJECT 1

CMT
 CRAWFORD, MURPHY & TILLY, INC.
 CONSULTING ENGINEERS
 © Copyright CMT, Inc.

IL PROJECT: PIA-3343
 AIP PROJ: 3-17-0080-XX
 FILE: ...023_Drainage_Details.dgn
 DESIGN BY: TWM, RBL
 DRAWN BY: CAG
 CHECKED BY: RBL
 APPROVED BY: CET
 DATE: APRIL 24, 2008
 JOB No: 0706104
 DRAINAGE DETAILS
 SHEET 1 OF 6
 SHEET 23 OF 140 SHEETS