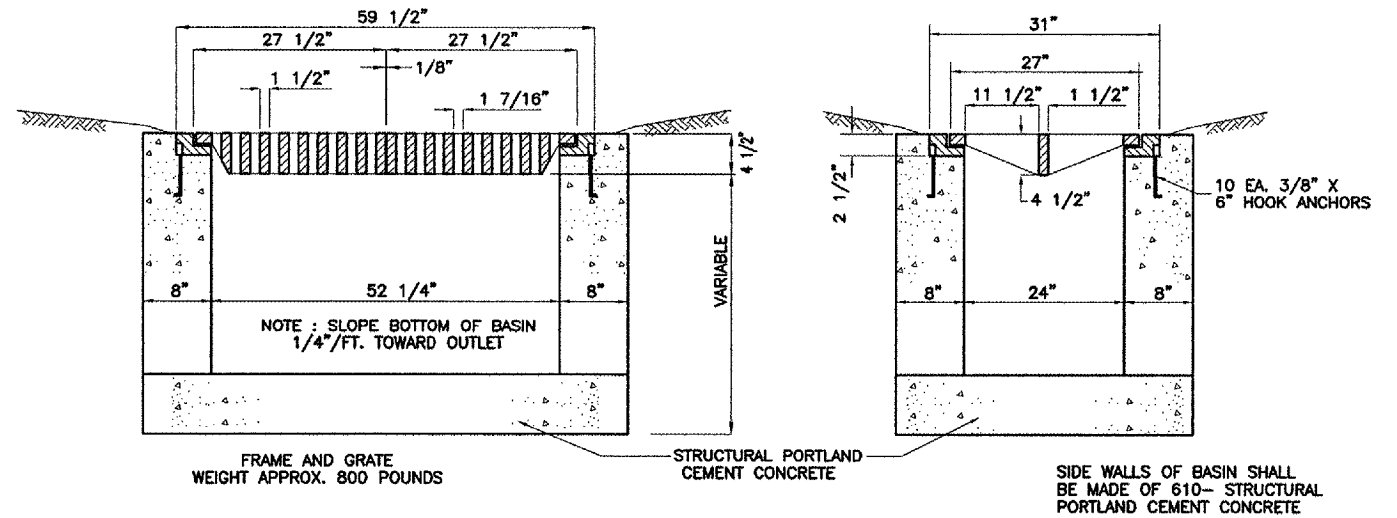


INLET (SINGLE), ITEM 751410

NOTES :

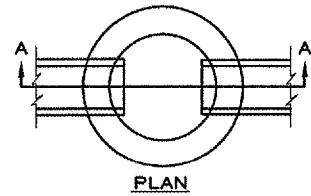
1. INLET SHALL INCLUDE FRAME WITH SINGLE GRATE OF TYPE SIMILAR AND EQUAL TO NO. R 3475 AS SHOWN BY CATALOG "R" ELEVENTH EDITION OF NEEHAW FOUNDRY CO.
2. REMOVE BOLTS THAT HOLD THE GRATE TO THE FRAME AND DO NOT REINSTALL.



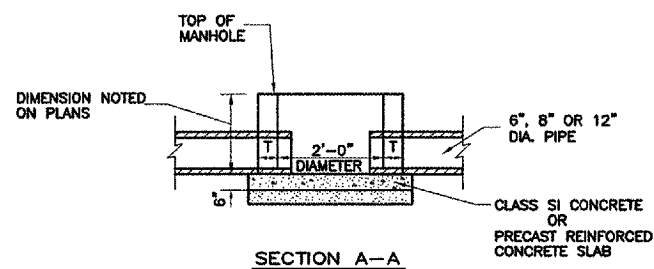
INLET SPECIAL (DOUBLE), ITEM 751415

NOTES :

1. INLET SPECIAL SHALL INCLUDE FRAME WITH SINGLE GRATE OF TYPE SIMILAR AND EQUAL TO NO. R 3475-3 AS SHOWN BY CATALOG "R" ELEVENTH EDITION OF NEEHAW FOUNDRY CO.
2. REMOVE BOLTS THAT HOLD THE GRATE TO THE FRAME AND DO NOT REINSTALL.

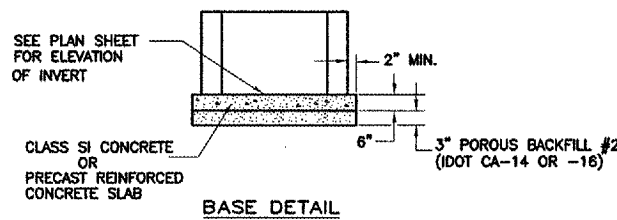


ALTERNATE MATERIALS FOR WALLS	T
PRECAST REINFORCED CONCRETE SECTION	3"
PRECAST REINFORCED CONCRETE RINGS	5"
CAST IN PLACE CONCRETE	6"



NOTES :

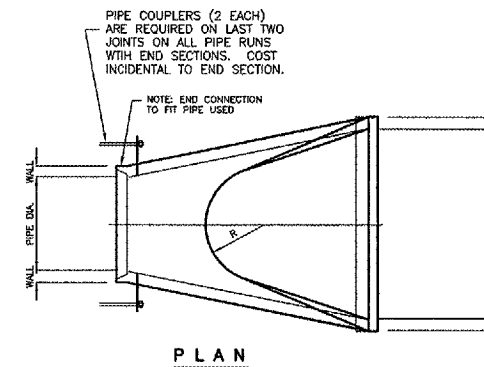
- 1) PRECAST REINFORCED CONCRETE RINGS AND MANHOLE FRAMES SHALL BE LAID IN FULL MORTAR BEDS WITH FLUSH JOINTS.
- 2) MORTAR MIX SHALL CONSIST OF 1 PART PORTLAND CEMENT AND 3 PARTS SAND.
- 3) ALL CONCRETE SHALL HAVE A MIN. STRENGTH AT 28 DAYS OF 3500 P.S.I.
- 4) THE CONTRACT UNIT PRICE FOR MANHOLE SPECIAL SHALL INCLUDE FURNISHING AND INSTALLING THE FRAME AND LID, THE SAND CUSHION, AND COMPACTING THE BACKFILL MATERIAL. SEE PLAN SHEETS FOR FRAME AND LID TYPE.



DETAIL OF INLET, TYPE A
ITEM AR751411

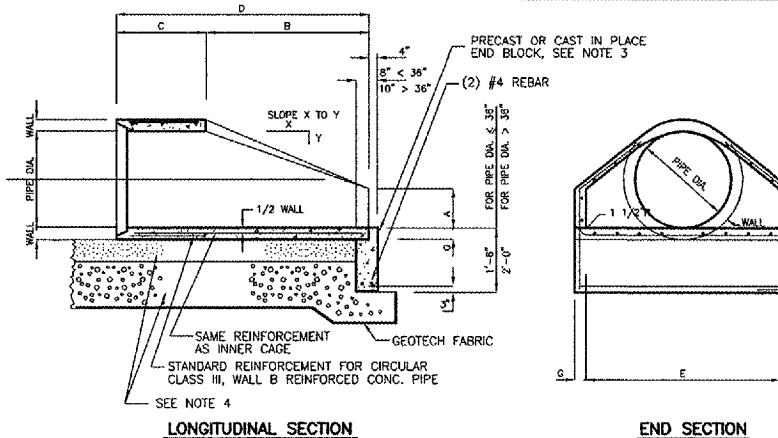
MODIFIED IDOT
STANDARD 602301

PRECAST REINFORCED CONCRETE FLARED END SECTION



PIPE DIA.	APPROX. WT. (LBS.)	WALL	A	B	C	D	E	G	R	SLOPE
12"	530	2"	4'	2'-0"	4'-0-7/8"	6'-0-7/8"	2'-0"	2'	9'	3:1
15"	740	2-1/4"	6'	2'-3"	3'-10"	6'-1"	2'-6"	2-1/4"	11'	3:1
18"	950	2-1/2"	9'	2'-3"	3'-10"	6'-1"	3'-0"	2-1/2"	12'	3:1
21"	1280	2-3/4"	9'	2'-11"	3'-2"	6'-1"	3'-6"	2-3/4"	13'	3:1
24"	1520	3"	9-1/2"	3'-7-1/2"	2'-6"	6'-1-1/2"	4'-0"	3"	14'	3:1
27"	1930	3-1/4"	10-1/2"	4'-0"	2'-1-1/2"	6'-1-1/2"	4'-6"	3-1/4"	14-1/2"	3:1
30"	2190	3-1/2"	1'-0"	4'-6"	1'-7-3/4"	6'-1-3/4"	5'-0"	3-1/2"	15'	3:1
33"	3200	3-3/4"	1'-1-1/2"	4'-10-1/2"	3'-3-1/4"	8'-1-3/4"	5'-6"	3-3/4"	17-1/2"	3:1
36"	4100	4"	1'-3"	5'-3"	2'-10-3/4"	8'-1-3/4"	6'-0"	4"	20'	3:1
42"	5380	4-1/2"	1'-9"	5'-3"	2'-11"	8'-2"	6'-6"	4-1/2"	22'	3:1
48"	6590	5"	2'-0"	6'-0"	2'-2"	8'-2"	7'-0"	5"	22'	3:1
54"	8240	5-1/2"	2'-3"	5'-5"	2'-11"	8'-4"	7'-6"	5-1/2"	24'	2.4:1
60"	8730	6"	2'-11"	5'-0"	3'-3"	8'-3"	8'-0"	5"	*	2:1
66"	10710	6-1/2"	3'-0"	6'-0"	2'-6"	8'-3"	8'-6"	5-1/2"	*	2:1
72"	12520	7"	3'-0"	6'-6"	1'-9"	8'-3"	9'-0"	6"	*	1.85:1
78"	14770	7-1/2"	3'-0"	7'-6"	1'-9"	9'-3"	9'-6"	6-1/2"	*	1.82:1
84"	18160	8"	3'-0"	7'-6-1/2"	1'-9"	9-3-1/2"	10'-0"	6-1/2"	*	1.5:1

RADIUS AS FURNISHED BY MANUFACTURER



NOTES :

1. PRECAST CONCRETE FLARED END SECTIONS SHALL CONFORM TO THE APPLICABLE REQUIREMENTS OF AASHTO M-170 CLASS III, WALL B REINFORCED CONCRETE PIPE.
2. PRECAST CONCRETE FLARED END SECTION FOR PIPE DIAMETER REQUIRED SHALL BE AS INDICATED ON DETAIL PLAN FOR EACH INDIVIDUAL INSTALLATION.
3. THE END BLOCK SHALL BE PLACED PRIOR TO THE INSTALLATION OF THE FLARED END SECTION. THE END BLOCK SHALL BE BACKFILLED IN ACCORDANCE WITH ART. 701-3.7 OF THE STANDARD SPECIFICATIONS, COST INCIDENTAL TO END SECTION.
4. BEDDING MATERIALS AND GEOTECH FABRIC PER 701 PIPE SPECIFICATION IN THE SPECIAL PROVISIONS AS SHOWN IN THIS DETAIL SHALL BE INCLUDED IN THE 752 PIPE END SECTION CONTRACT UNIT PRICE.

MODIFIED I.D.O.T.
STANDARD 542301

FOR EQUIV ELLIPTICAL PRECAST, SEE IDOT STANDARD 542306.
ADDITIONAL BEDDING REQUIREMENTS THAT ARE SHOWN ON THIS SHEET
SHALL BE APPLIED TO IDOT STANDARD 542306.