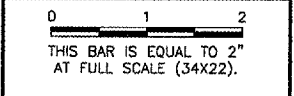


REVISIONS		
NUMBER	BY	DATE



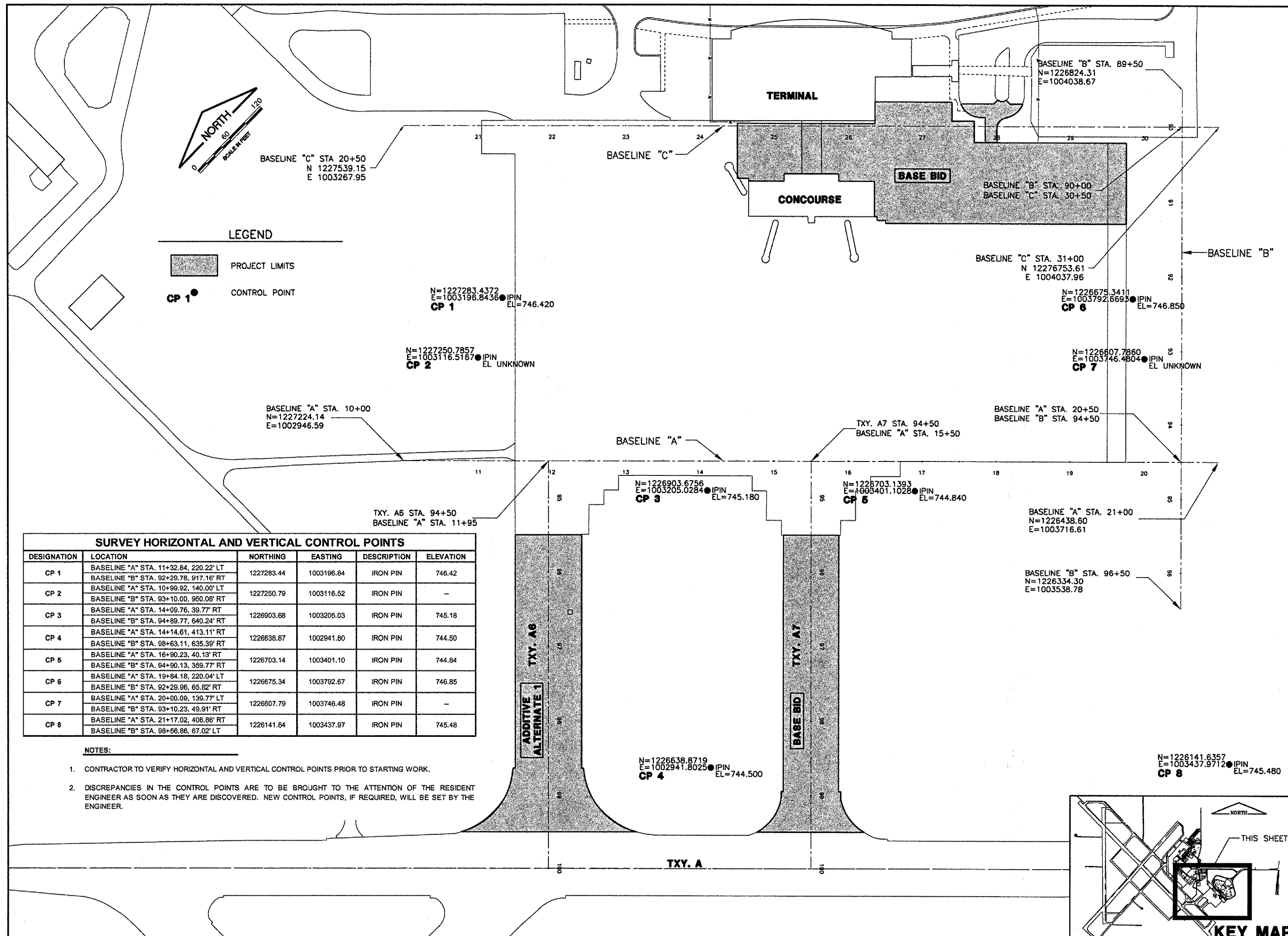
**UNIVERSITY OF ILLINOIS
 WILLARD AIRPORT**

REHABILITATE AIR CARRIER RAMP, PHASE 2

HORIZONTAL AND VERTICAL CONTROLS

© Copyright CMT, Inc.
CMT
 CRAWFORD, MURPHY & TILLY, INC.
 CONSULTING ENGINEERS
 License No. BR-000613

DESIGN BY: SMS
 DRAWN BY: CMT
 CHECKED BY: *ems*
 APPROVED BY: *ems*
 DATE: 04/18/2008
 JOB No: 0305903



SURVEY HORIZONTAL AND VERTICAL CONTROL POINTS					
DESIGNATION	LOCATION	NORTHING	EASTING	DESCRIPTION	ELEVATION
CP 1	BASELINE "A" STA. 11+32.84, 220.22' LT	1227283.44	1003196.84	IRON PIN	746.42
	BASELINE "B" STA. 92+29.78, 917.16' RT				
CP 2	BASELINE "A" STA. 10+09.92, 140.00' LT	1227250.79	1003116.52	IRON PIN	-
	BASELINE "B" STA. 93+10.00, 950.08' RT				
CP 3	BASELINE "A" STA. 14+09.76, 39.77' RT	1226903.68	1003205.03	IRON PIN	745.18
	BASELINE "B" STA. 94+89.77, 640.24' RT				
CP 4	BASELINE "A" STA. 14+14.61, 413.11' RT	1226638.87	1002941.80	IRON PIN	744.50
	BASELINE "B" STA. 98+63.11, 635.39' RT				
CP 5	BASELINE "A" STA. 16+90.23, 40.13' RT	1226703.14	1003401.10	IRON PIN	744.84
	BASELINE "B" STA. 94+90.13, 369.77' RT				
CP 6	BASELINE "A" STA. 19+84.18, 220.04' LT	1226675.34	1003792.67	IRON PIN	746.85
	BASELINE "B" STA. 92+29.96, 65.62' RT				
CP 7	BASELINE "A" STA. 20+00.09, 139.77' LT	1226607.79	1003746.48	IRON PIN	-
	BASELINE "B" STA. 93+10.23, 49.91' RT				
CP 8	BASELINE "A" STA. 21+17.02, 406.86' RT	1226141.64	1003437.97	IRON PIN	745.48
	BASELINE "B" STA. 98+58.86, 87.02' LT				

- NOTES:**
- CONTRACTOR TO VERIFY HORIZONTAL AND VERTICAL CONTROL POINTS PRIOR TO STARTING WORK.
 - DISCREPANCIES IN THE CONTROL POINTS ARE TO BE BROUGHT TO THE ATTENTION OF THE RESIDENT ENGINEER AS SOON AS THEY ARE DISCOVERED. NEW CONTROL POINTS, IF REQUIRED, WILL BE SET BY THE ENGINEER.

