

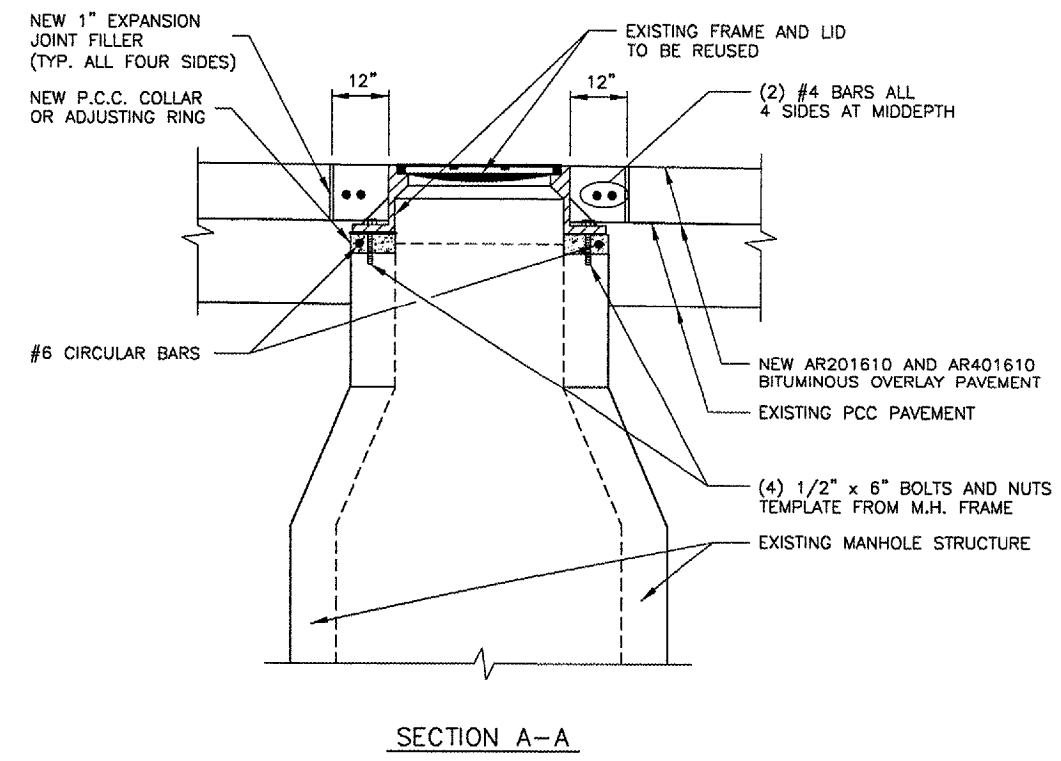
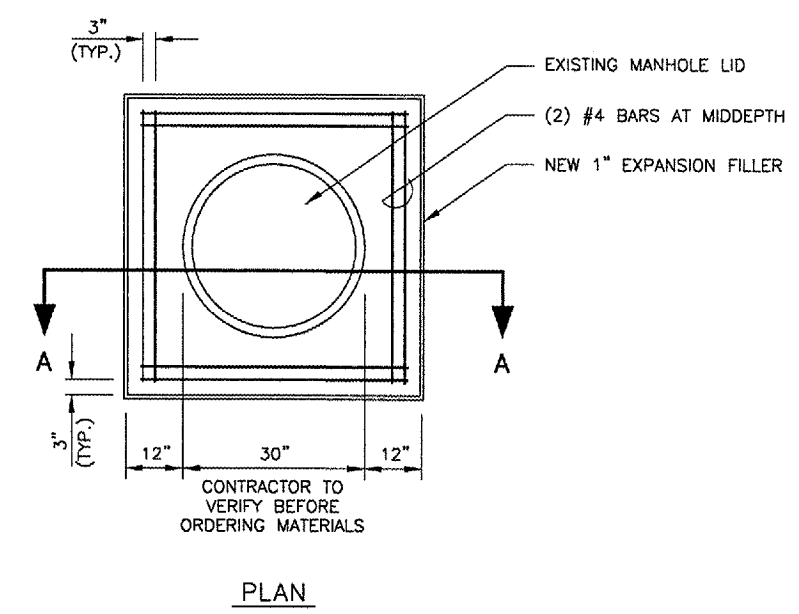
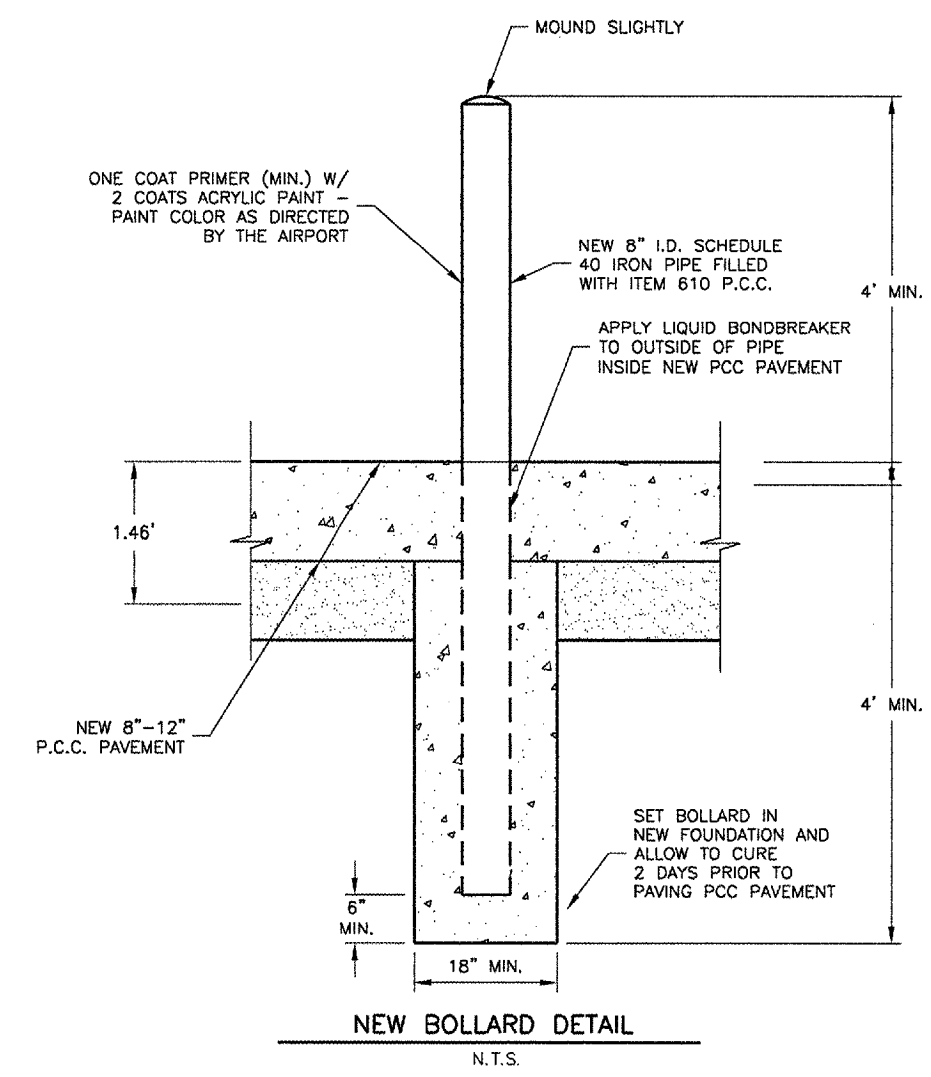
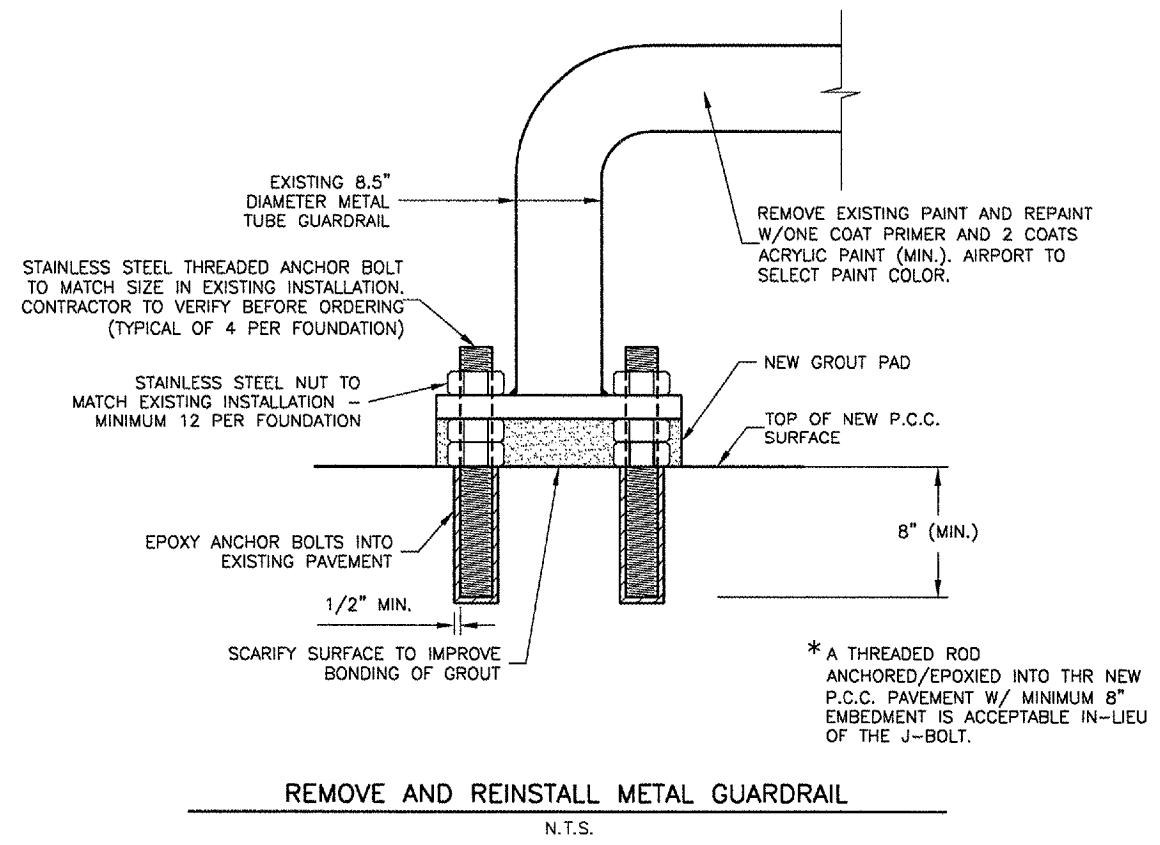
REVISIONS		
NUMBER	BY	DATE

0 1 2  
 THIS BAR IS EQUAL TO 2" AT FULL SCALE (34X22).

UNIVERSITY OF ILLINOIS  
 WILLARD AIRPORT  
 REHABILITATE AIR CARRIER RAMP, PHASE 2  
 PAVING AND MISCELLANEOUS DETAILS SHEET 2

© Copyright CMT, Inc.  
**CMT**  
 CRAWFORD, MURPHY & TILLY, INC.  
 CONSULTING ENGINEERS  
 License No. 04-000613

DESIGN BY:	SMS
DRAWN BY:	CMT
CHECKED BY:	<i>SM</i>
APPROVED BY:	<i>SM</i>
DATE:	04/18/2008
JOB No:	0305903
CMI-3663 3-17-0016-XX	
SHEET 32 OF 57 SHEETS	



**MANHOLE NOTES**

1.) HEIGHT OF ADJUSTMENT SHOWN ON PROJECT IMPROVEMENTS SHEETS.

**IN PAVEMENT MANHOLE ADJUSTMENT**  
N.T.S.