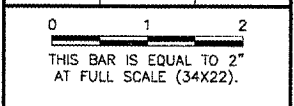


REVISIONS		
NUMBER	BY	DATE

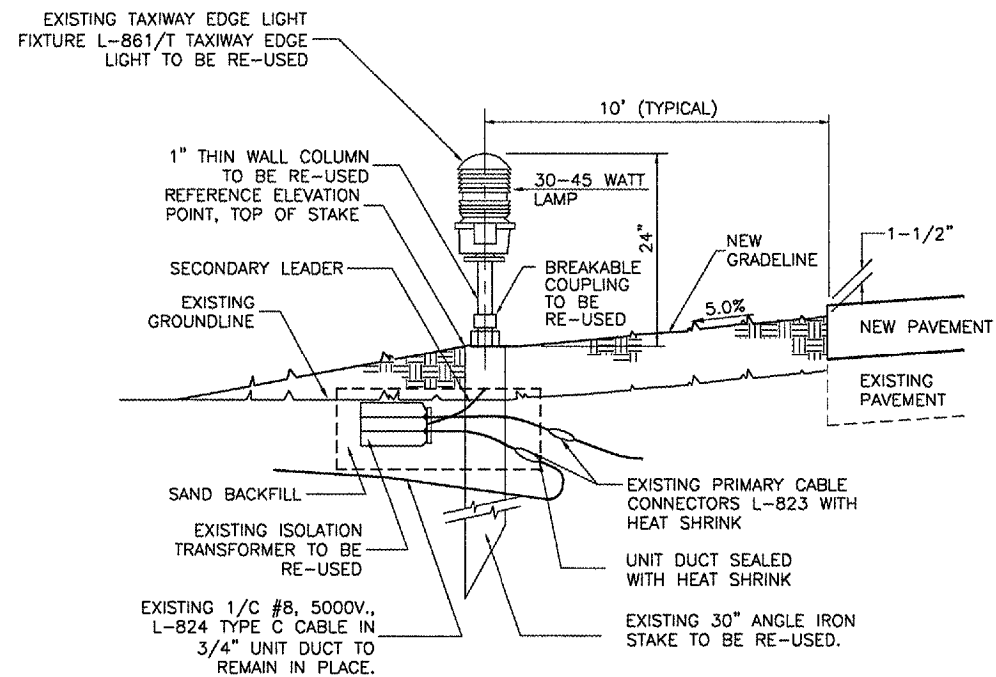


UNIVERSITY OF ILLINOIS
 WILLARD AIRPORT
 REHABILITATE AIR CARRIER RAMP, PHASE 2
 ELECTRICAL ADJUSTMENTS & DETAILS
 SHEET 1

© Copyright: CMT, Inc.
CMT
 CRAWFORD, MURPHY & TILLY, INC.
 CONSULTING ENGINEERS
 License No. 841-000616

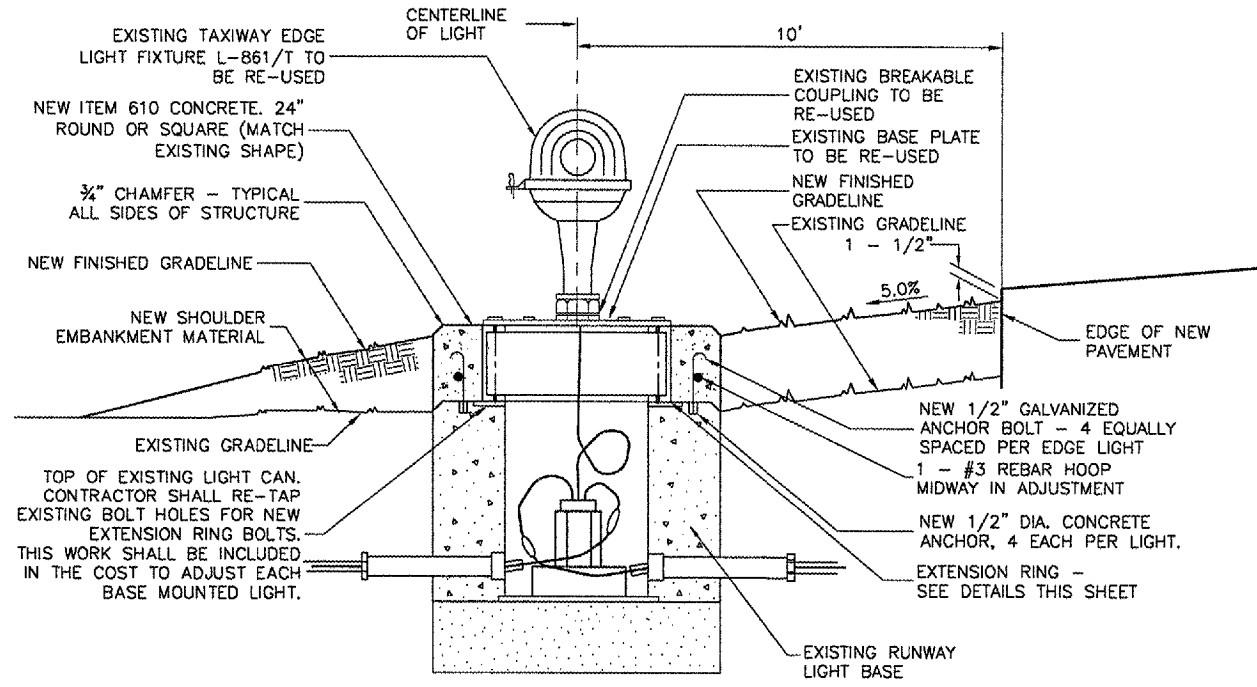
DESIGN BY: SWS
 DRAWN BY: CMT
 CHECKED BY: *SMS*
 APPROVED BY: *SMS*
 DATE: 04/18/2008
 JOB No: 0305903

CMI-3663
 3-17-0016-XX
 SHEET 48 OF 57 SHEETS



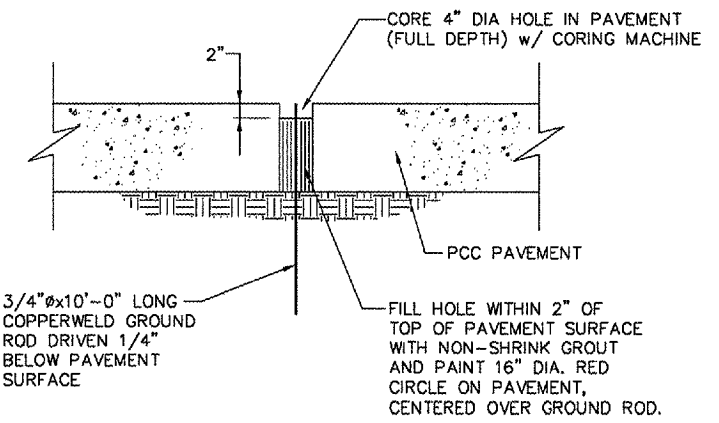
- METHOD OF CONSTRUCTION**
- 1.) ADJUST SHOULDERS TO GRADE.
 - 2.) EXCAVATE STAKE MOUNTED LIGHT AND TRANSFORMER AND SET AT NEW ELEVATION.
 - 3.) BACKFILL EXCAVATED MATERIAL.

TAXIWAY STAKE MOUNTED LIGHT ADJUSTMENT
N.T.S.

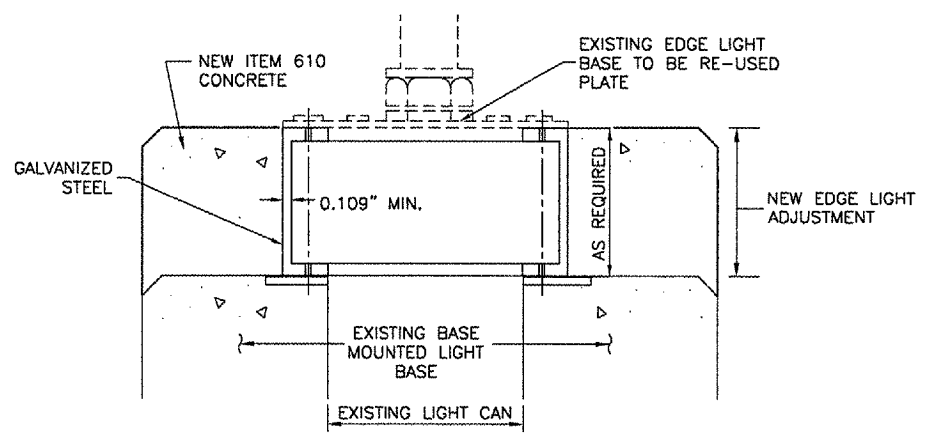


- METHOD OF CONSTRUCTION**
- 1.) ADJUST SHOULDERS TO GRADE.
 - 2.) EXCAVATE BASE MOUNTED LIGHT AND INSTALL NEW EXTENSION RING AND CONCRETE TO PROPER GRADE.
 - 3.) BACKFILL EXCAVATED MATERIAL.

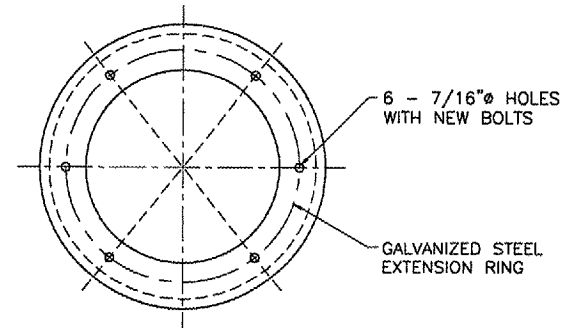
TAXIWAY BASE MOUNTED LIGHT ADJUSTMENT
N.T.S.



GROUND ROD DETAIL
N.T.S.



EXTENSION RING DETAIL
N.T.S.



NOTE: 1.) THE CONTRACTOR SHALL FIELD VERIFY EXISTING LIGHT BASE TYPE (MOST ARE L-867, 12" DIA. CLASS 1) AND CALCULATE REQUIRED HEIGHT ADJUSTMENT DIMENSION BASED ON PROPOSED SHOULDER ELEVATION AND THE ELEVATION OF THE TOP OF THE EXISTING LIGHT BASE. NO ADDITIONAL PAYMENT WILL BE MADE FOR ALTERNATE LIGHT CAN TYPES. RETAPPING EXISTING BOLT HOLES IF REQUIRED AND SHALL BE CONSIDERED INCIDENTAL TO THE UNIT PRICE FOR LIGHT ADJUSTMENT.