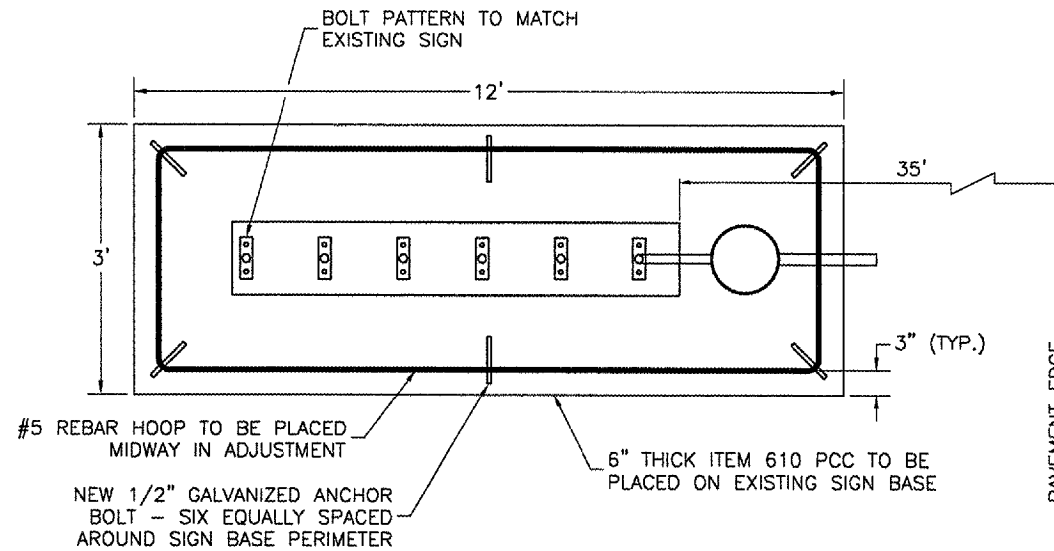
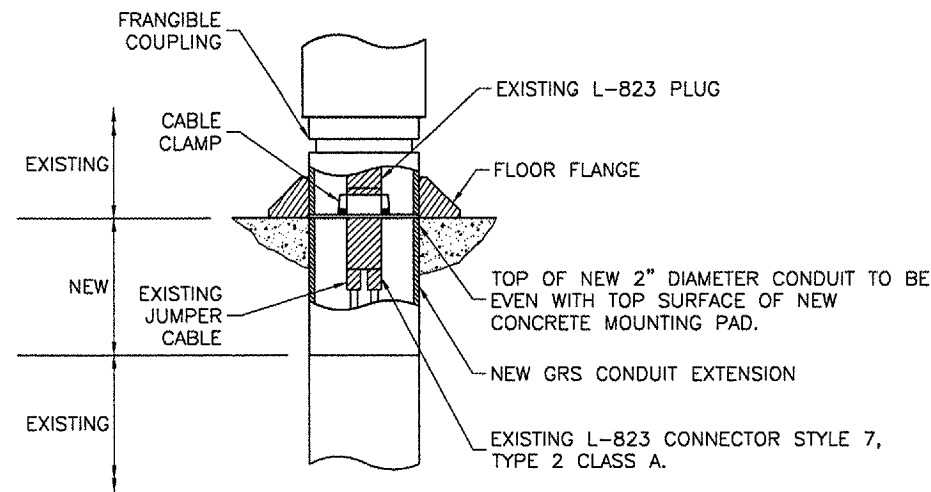


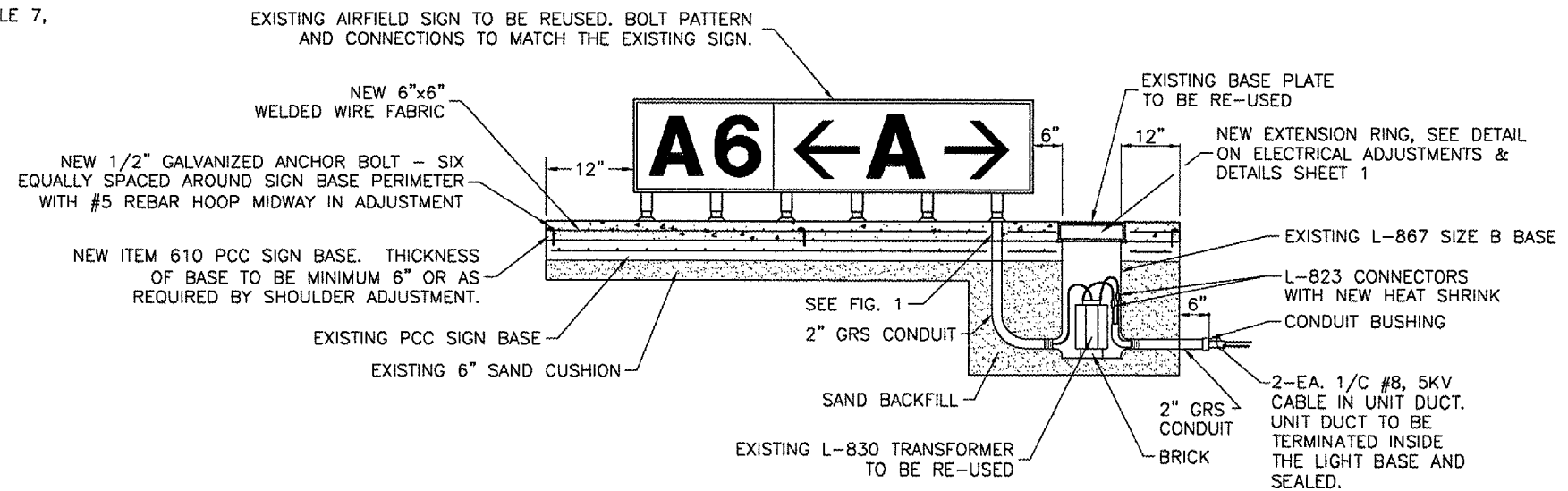
ELEVATION VIEW
 NOT TO SCALE



PLAN VIEW
 NOT TO SCALE



ELECTRICAL CONNECTION DETAIL
 FIGURE 1



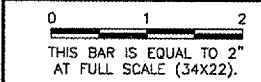
ELEVATION VIEW
 NOT TO SCALE

NEW ADJUSTED EXISTING AIRFIELD GUIDANCE SIGN DETAIL
 NOT TO SCALE

NOTES FOR ADJUSTED SIGN

1. THE EXISTING AIRFIELD GUIDANCE SIGN AND LEGEND IS TO BE REMOVED, PRESERVED AND RE-USED AT THE EXISTING SIGN LOCATION.
2. THE ADJUSTED SIGN WILL BE REMOUNTED ON THE CONCRETE BASE (ITEM 610) AFTER THE BASE HAS BEEN VERTICALLY ADJUSTED. THE SIGN BASE ADJUSTMENT WILL INCLUDE THE 6-INCH MINIMUM CONCRETE SLAB POURED IN-PLACE ON TOP OF THE EXISTING SIGN BASE WITH WIRE FABRIC, ANCHOR BOLTS AND REBAR HOOP, 2-INCH DIAMETER GRS CONDUIT EXTENSION, L-867 BASE EXTENSION RING AND HEAT SHRINK.
3. THE ADJUSTED SIGN WILL RE-USE THE EXISTING TRANSFORMER AND 3/8" STEEL COVER WITH GASKET.
4. THE CONTRACTOR MUST REPLACE IN KIND ANY MOUNTING HARDWARE DAMAGED BY THE ADJUSTMENT PROCESS.

REVISIONS		
NUMBER	BY	DATE



UNIVERSITY OF ILLINOIS
 WILLARD AIRPORT
 REHABILITATE AIR CARRIER RAMP, PHASE 2
 ELECTRICAL ADJUSTMENTS & DETAILS
 SHEET 2

© Copyright CMT, Inc.
CMT
 CRAWFORD, MURPHY & TILLY, INC.
 CONSULTING ENGINEERS
 License No. 184-00663



DESIGN BY:	CMT
DRAWN BY:	CMT
CHECKED BY:	<i>SMS</i>
APPROVED BY:	<i>SMS</i>
DATE:	04/18/2008
JOB No:	0305903

CMI-3663
 3-17-0016-XX