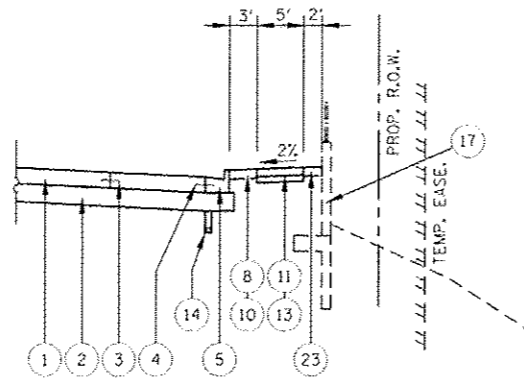
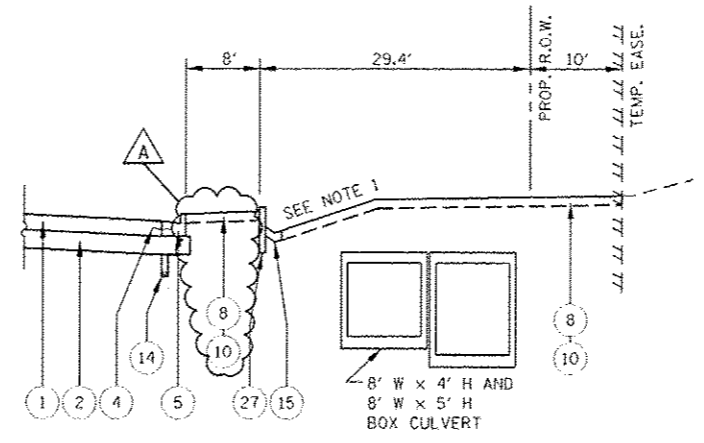


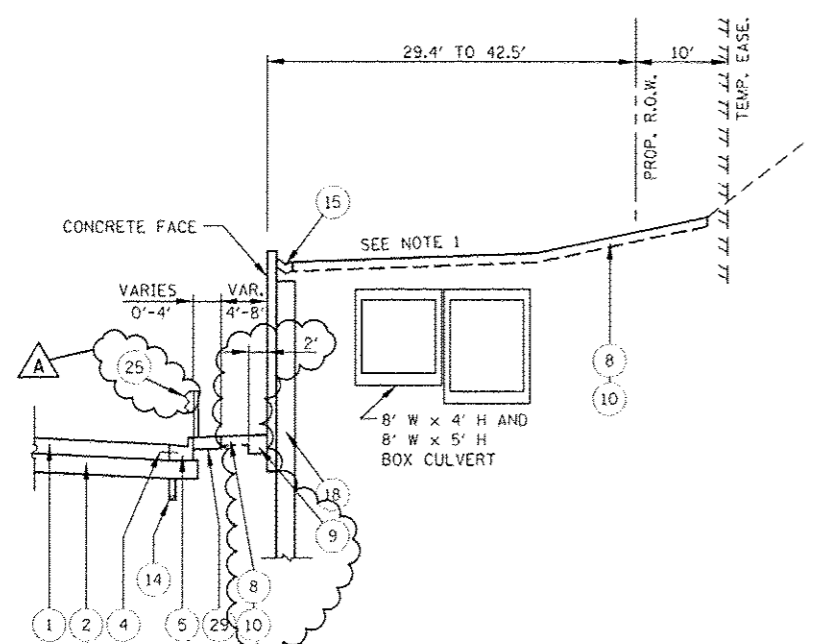
STA. 3913+83 TO STA. 3915+42



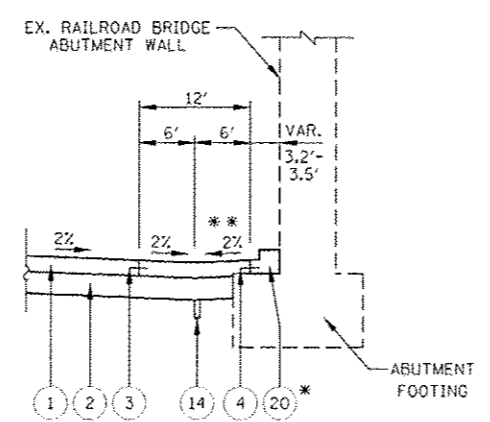
STA. 3920+20 TO STA. 3922+70



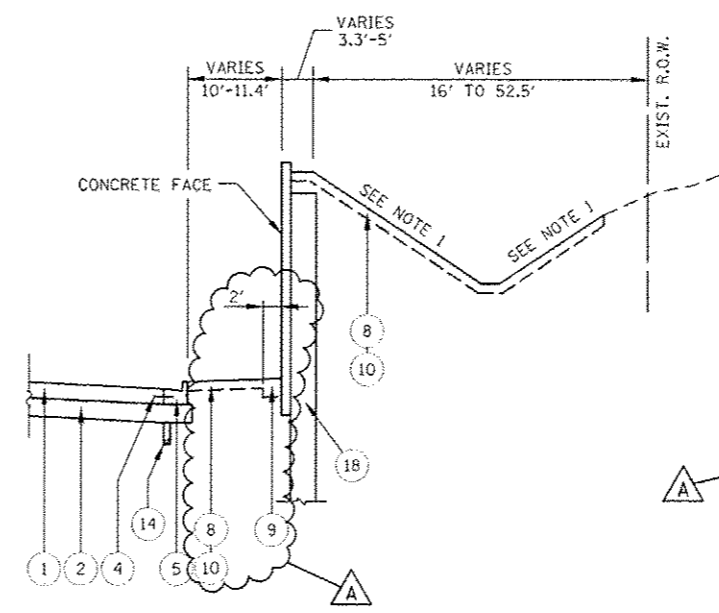
STA. 3958+24 TO STA. 3959+30



STA. 3959+30 TO STA. 3964+33



BNSF RR UNDERPASS
STA. 3964+50 TO STA. 3965+07



STA. 3965+23 TO STA. 3968+25

PROPOSED LEGEND:

- 1 PORTLAND CEMENT CONCRETE PAVEMENT, 10 1/4" (JOINTED)
- 2 AGGREGATE SUBGRADE IMPROVEMENT 12"
- 3 LONGITUDINAL CONSTRUCTION JOINT GROUTED IN PLACE, NO. 6 TIE BAR AT 24" LONG, DEFORMED (EPOXY COATED) AT 24" CTS. (INCLUDED IN THE COST OF THE PROPOSED PAVEMENT)
- 4 NO. 6 TIE BAR AT 24" LONG, DEFORMED (EPOXY COATED) AT 24" CTS. (INCLUDED IN THE COST OF THE PROPOSED CURB AND GUTTER)
- 5 COMBINATION CONCRETE CURB & GUTTER, TYPE B-6.24
- 6 COMBINATION CONCRETE CURB & GUTTER, TYPE B-6.12
- 7 CONCRETE MEDIAN TYPE SB-6 (SPECIAL)
- 8 TOPSOIL 6" (TOPSOIL EXCAVATION AND PLACEMENT)
- 9 TOPSOIL 12" (TOPSOIL EXCAVATION AND PLACEMENT)
- 10 SODDING, SALT TOLERANT OR SEEDING (AS NOTED ON LANDSCAPE PLAN)
- 11 SIDEWALK, PORTLAND CEMENT CONCRETE SIDEWALK, 5"
- 12 SHARED USE PATH, PORTLAND CEMENT CONCRETE SIDEWALK, 5"
- 13 SUB-BASE GRANULAR MATERIAL, TYPE B, 4"
- 14 PIPE UNDERDRAINS, FABRIC LINED TRENCH, 4"
- 15 CONCRETE GUTTER, TYPE B
- 16 CONCRETE BARRIER WALL (SPECIAL)
- 17 RETAINING WALL (ADVANCED CONTRACT BY OTHERS)
- 18 RETAINING WALL (SEE NOTE 3)
- 19 GEOTECHNICAL FABRIC FOR GROUND STABILIZATION (SEE NOTE 7)
- 20 COMBINATION CONCRETE CURB & GUTTER, TYPE B-6.12 (VARIABLE CURB WIDTH)
- 21 CONCRETE BARRIER BASE
- 22 PARAPET RAILING
- 23 HOT-MIX ASPHALT STABILIZATION, 5"
- 24 SLEEPER SLAB
- 25 STEEL PLATE BEAM GUARDRAIL, TYPE A, 6 FOOT POSTS
- 26 NOISE ABATEMENT WALL, GROUND MOUNTED (SEE NOTE 4)
- 27 CONCRETE CURB, TYPE B
- 28 CHAIN LINK FENCE, 4"
- 29 AGGREGATE SHOULDERS TYPE B, 10"

NORTHBOUND ILLINOIS ROUTE 59 - RIGHT SIDE

NOTES

- 1. SEE CROSS SECTIONS FOR GRADING INFORMATION.
- 2. SEE LANDSCAPING PLANS FOR SEEDING AND SODDING INFORMATION.
- 3. SEE RETAINING WALL PLANS FOR RETAINING WALL INFORMATION.
- 4. SEE NOISE WALL PLAN AND PROFILE SHEETS, AND NOISE WALL DETAIL SHEET FOR INFORMATION.
- 5. SEE PLAT OF HIGHWAYS FOR RIGHT OF WAY INFORMATION.
- 6. THE CONCRETE BARRIER BASE SHALL NOT BE POURED DIRECTLY AGAINST THE EXISTING BRIDGE ABUTMENT FOOTING. A 2" PREFORMED EXPANSION JOINT FILLER SHALL BE PLACED BETWEEN THE ABUTMENT AND THE CURB. THE AGGREGATE SUBGRADE IMPROVEMENT, 12" SHALL BE PLACED AGAINST THE ABUTMENT FOOTING. PAYMENT FOR THE 2" PREFORMED EXPANSION JOINT FILLER IS CONSIDERED INCLUDED IN THE UNIT COST OF COMB. CONC. CURB & GUTTER, TYPE B-6.12 (VARIABLE CURB WIDTH).
- 7. GEOTECHNICAL FABRIC FOR GROUND STABILIZATION IS PLACED BENEATH AGGREGATE SUBGRADE IMPROVEMENT 12", EXCEPT IN THE AREA OF LONGITUDINAL PIPE UNDERDRAINS WHERE IT IS LIMITED TO THE EDGE OF PAVEMENT (SEE PIPE UNDER DRAIN DETAIL).
- 8. NORTHBOUND LANE 3 SHALL BE CONSTRUCTED WITH PAVEMENT CROSS SLOPE 2% TOWARDS CENTER TO PROVIDE CLEARANCE OVER RAILROAD BRIDGE FOUNDATION.

DESIGNED <i>PJO</i>	REVISED - ADDENDUM A 02/20/2013	STATE OF ILLINOIS DEPARTMENT OF TRANSPORTATION	TYPICAL SECTION DETAILS		F.A.P. RTE.	SECTION	COUNTY	TOTAL SHEETS	SHEET NO.		
DRAWN <i>KES</i>	REVISED -		SCALE: NONE	SHEET NO. 2 OF 3 SHEETS	STA.	TO STA.	338	(112 & 113) WRS-7	DUPAGE	1156	66
CHECKED <i>JCM</i>	REVISED -				CONTRACT NO. 60R30						
DATE <i>12/14/2012</i>	REVISED -				ILLINOIS FED. AID PROJECT						