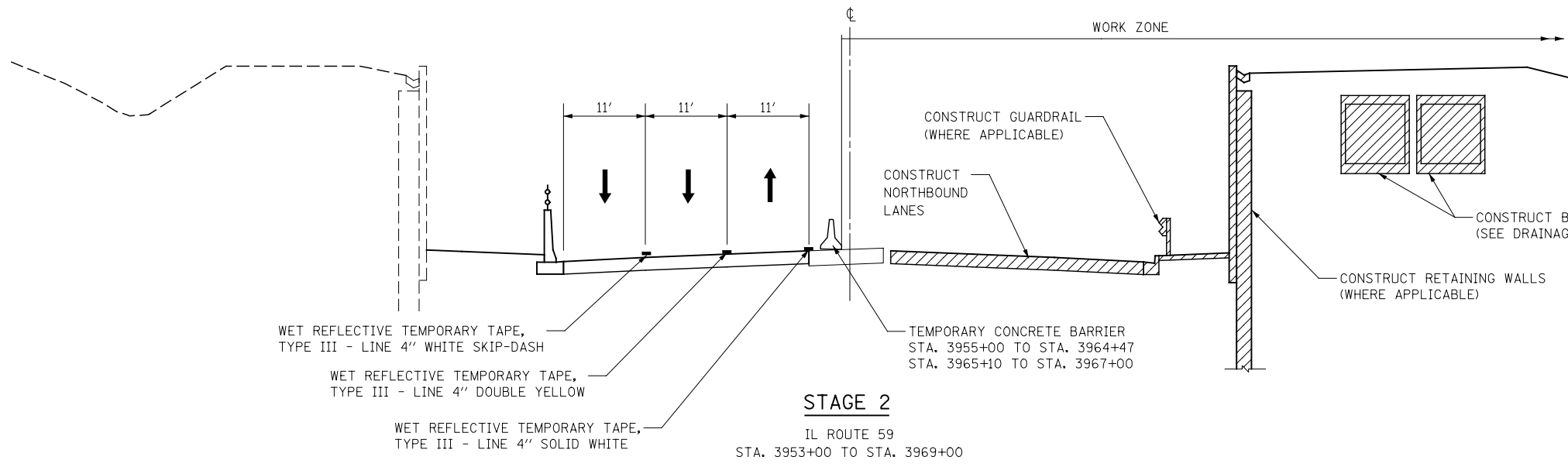
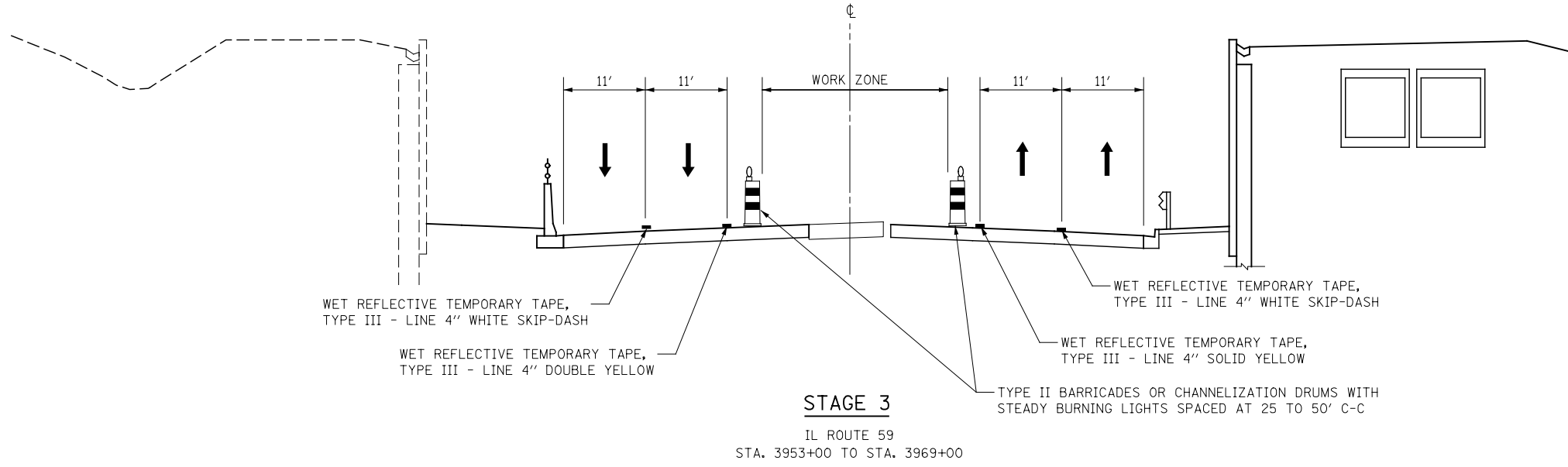


WET REFLECTIVE TEMPORARY TAPE, TYPE III - LINE 4" WHITE SKIP-DASH
 WET REFLECTIVE TEMPORARY TAPE, TYPE III - LINE 4" SOLID YELLOW
 CONSTRUCT TEMPORARY PAVEMENT ADJACENT TO PROPOSED PAVEMENT
 STA. 3955+00 TO STA. 3956+00
 STA. 3965+92 TO STA. 3969+00
 WORK ZONE
 10'
 11' 11'
 TEMPORARY PAVEMENT MARKING - LINE 4" DOUBLE YELLOW
 CHANNELIZATION DRUMS WITH STEADY BURNING LIGHTS SPACED AT 50' C-C
 TEMPORARY CONCRETE BARRIER
 STA. 3957+08 TO STA. 3964+46 &
 STA. 3965+10 TO STA. 3965+48
STAGE 1D
 IL ROUTE 59
 STA. 3953+00 TO STA. 3969+00



WET REFLECTIVE TEMPORARY TAPE, TYPE III - LINE 4" WHITE SKIP-DASH
 WET REFLECTIVE TEMPORARY TAPE, TYPE III - LINE 4" DOUBLE YELLOW
 WET REFLECTIVE TEMPORARY TAPE, TYPE III - LINE 4" SOLID WHITE
 CONSTRUCT GUARDRAIL (WHERE APPLICABLE)
 CONSTRUCT NORTHBOUND LANES
 TEMPORARY CONCRETE BARRIER
 STA. 3955+00 TO STA. 3964+47
 STA. 3965+10 TO STA. 3967+00
 CONSTRUCT BOX CULVERTS (SEE DRAINAGE PLANS)
 CONSTRUCT RETAINING WALLS (WHERE APPLICABLE)
 WORK ZONE
 11' 11' 11'
STAGE 2
 IL ROUTE 59
 STA. 3953+00 TO STA. 3969+00



WET REFLECTIVE TEMPORARY TAPE, TYPE III - LINE 4" WHITE SKIP-DASH
 WET REFLECTIVE TEMPORARY TAPE, TYPE III - LINE 4" DOUBLE YELLOW
 WET REFLECTIVE TEMPORARY TAPE, TYPE III - LINE 4" WHITE SKIP-DASH
 WET REFLECTIVE TEMPORARY TAPE, TYPE III - LINE 4" SOLID YELLOW
 TYPE II BARRICADES OR CHANNELIZATION DRUMS WITH STEADY BURNING LIGHTS SPACED AT 25 TO 50' C-C
 WORK ZONE
 11' 11' 11' 11'
STAGE 3
 IL ROUTE 59
 STA. 3953+00 TO STA. 3969+00

DESIGNED <i>PJO</i>	REVISED -	STATE OF ILLINOIS DEPARTMENT OF TRANSPORTATION	IL ROUTE 59 MOT TYPICAL SECTIONS MERIDIAN LAKES DRIVE TO BNSF RAILROAD		F.A.P. RTE.	SECTION	COUNTY	TOTAL SHEETS	SHEET NO.	
DRAWN <i>KES</i>	REVISED -		338	(112 & 113) WRS-7	DUPAGE	1156	105			
CHECKED <i>JCM</i>	REVISED -		CONTRACT NO. 60R30			ILLINOIS FED. AID PROJECT				
DATE <i>12/14/2012</i>	REVISED -		SCALE: AS SHOWN	SHEET NO. 11 OF 195 SHEETS	STA. 3953+00 TO STA. 3969+00					