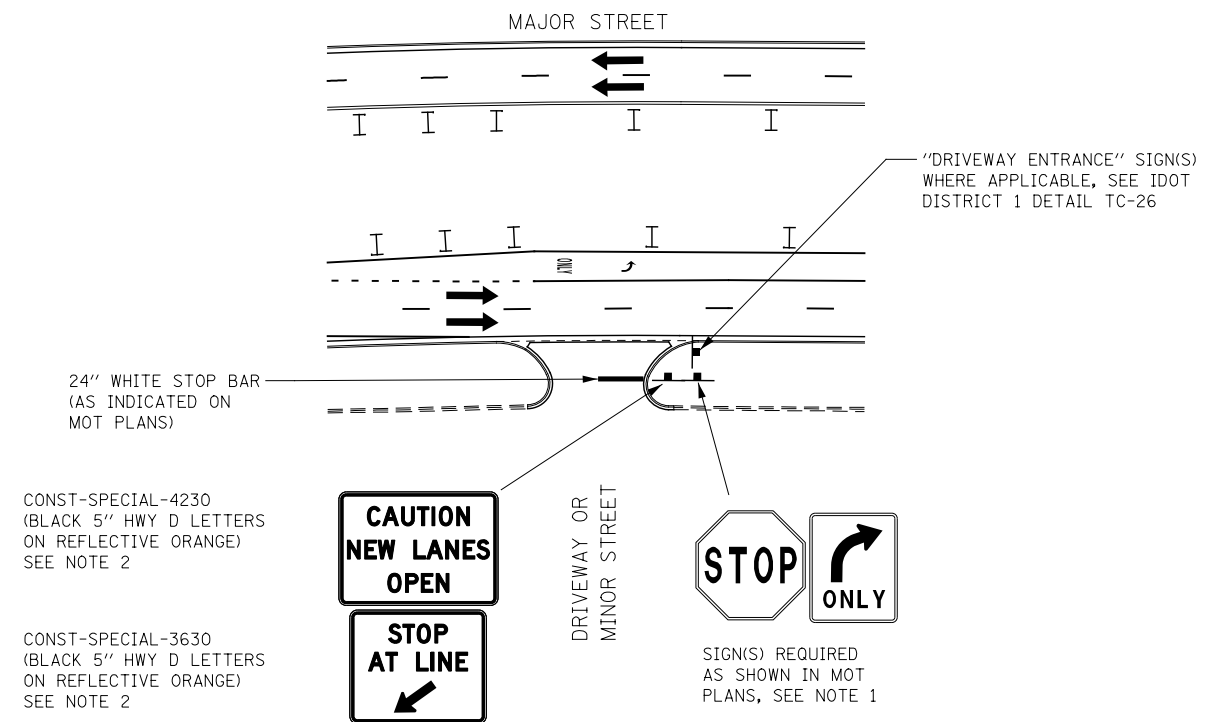


NEW TRAFFIC LANES OPEN OFFSET FROM EDGE OF PAVEMENT



NEW TRAFFIC LANES OPEN ADJACENT TO EDGE OF PAVEMENT

TEMPORARY INFORMATION SIGNING AT DRIVEWAYS/SIDE ROADS DETAIL

1. SIGNS SHOWN ON THE MOT PLANS SHALL BE INSTALLED TO THE RIGHT OF THE TEMPORARY INFORMATION SIGNAGE. THE MOT SIGNS ARE INCLUDED IN THE COST FOR TRAFFIC CONTROL AND PROTECTION (SPECIAL).
2. CONST-SPECIAL SIGNS TO BE MEASURED AND PAID FOR SEPARATELY UNDER TEMPORARY INFORMATION SIGNING. THESE SIGNS WILL NOT BE REMEASURED FOR PAYMENT IN SUBSEQUENT STAGES. THE RELOCATION OF THESE SIGNS SHALL BE INCLUDED IN THE COST FOR TEMPORARY INFORMATION SIGNING.

DESIGNED	PJO	REVISED	-	STATE OF ILLINOIS DEPARTMENT OF TRANSPORTATION	MAINTENANCE OF TRAFFIC DETAILS ILLINOIS ROUTE 59		F.A.P. RTE.	SECTION	COUNTY	TOTAL SHEETS	SHEET NO.
DRAWN	KES	REVISED	-				338	(112 & 113) WRS-7	DUPAGE	1156	111
CHECKED	JCM	REVISED	-		CONTRACT NO. 60R30						
DATE	12/14/2012	REVISED	-		SCALE: NONE	SHEET NO. 17 OF 195 SHEETS	STA.	TO STA.	ILLINOIS FED. AID PROJECT		