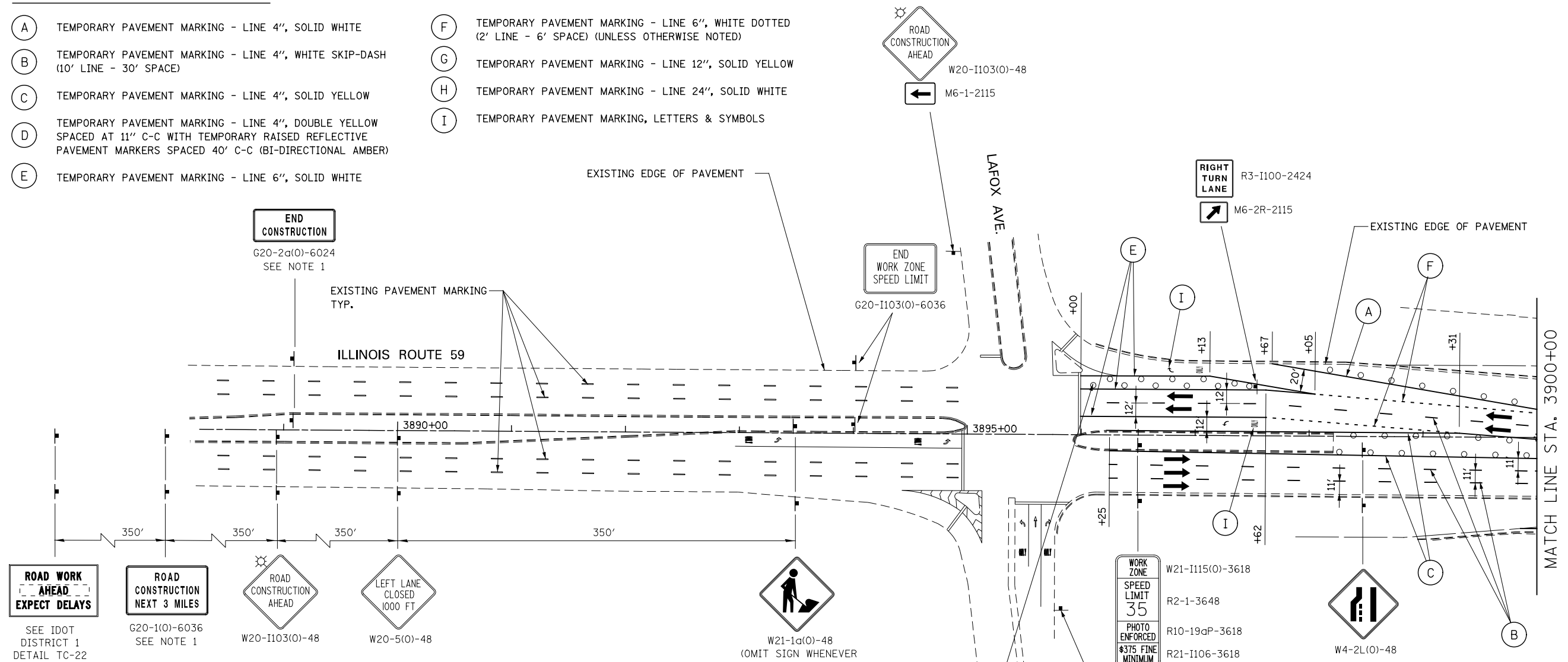


MOT PAVEMENT MARKING LEGEND

- (A) TEMPORARY PAVEMENT MARKING - LINE 4", SOLID WHITE
- (B) TEMPORARY PAVEMENT MARKING - LINE 4", WHITE SKIP-DASH (10' LINE - 30' SPACE)
- (C) TEMPORARY PAVEMENT MARKING - LINE 4", SOLID YELLOW
- (D) TEMPORARY PAVEMENT MARKING - LINE 4", DOUBLE YELLOW SPACED AT 11" C-C WITH TEMPORARY RAISED REFLECTIVE PAVEMENT MARKERS SPACED 40' C-C (BI-DIRECTIONAL AMBER)
- (E) TEMPORARY PAVEMENT MARKING - LINE 6", SOLID WHITE
- (F) TEMPORARY PAVEMENT MARKING - LINE 6", WHITE DOTTED (2' LINE - 6' SPACE) (UNLESS OTHERWISE NOTED)
- (G) TEMPORARY PAVEMENT MARKING - LINE 12", SOLID YELLOW
- (H) TEMPORARY PAVEMENT MARKING - LINE 24", SOLID WHITE
- (I) TEMPORARY PAVEMENT MARKING, LETTERS & SYMBOLS



ADVANCE SIGNING FOR NORTHBOUND IL ROUTE 59

(SPACING MAY VARY DUE TO FIELD CONDITIONS)
TWO SIGNS REQUIRED AT EACH LOCATION; ONE REQUIRED BEHIND RIGHT CURB AND THE OTHER IN MEDIAN

W21-1a(0)-48
(OMIT SIGN WHENEVER WORKERS ARE NOT PRESENT FOR OVER 1 HOUR)

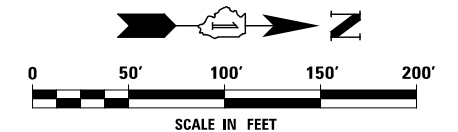
DRUMS WITH STEADY BURNING LIGHTS SPACED AT 25' C-C (TYP.)

LEGEND

- CONSTRUCTION WORK ZONE
- TEMPORARY PAVEMENT PLACED IN THIS STAGE
- DIRECTION OF TRAFFIC
- TYPE II BARRICADE OR DRUM WITH STEADY BURNING LIGHT
- CHANNELIZATION DRUM WITH STEADY BURNING LIGHT
- TEMPORARY CONCRETE BARRIER
- VERTICAL PANEL WITH STEADY BURNING LIGHT
- SIGN
- TYPE III BARRICADE LOCATION
- FLASHING YELLOW LIGHT

NOTES

1. THE CONTRACTOR SHALL INSTALL G20-1(0) "ROAD CONSTRUCTION NEXT 3 MILES" AND G20-2a(0) "END CONSTRUCTION" SIGNS ONLY WHILE CONSTRUCTION IS ONGOING FOR ADJACENT ROADWAY CONTRACTS (60R31 AND 60I31) LOCATED NORTH OF NORTH AURORA ROAD. SEE IDOT STANDARD 701901.



	DESIGNED <i>PJO</i>	REVISED -	STATE OF ILLINOIS DEPARTMENT OF TRANSPORTATION	MAINTENANCE OF TRAFFIC - STAGE 1 ILLINOIS ROUTE 59	F.A.P. RTE.	SECTION	COUNTY	TOTAL SHEETS	SHEET NO.	
	DRAWN <i>KES</i>	REVISED -			338	(112 & 113) WRS-7	DUPAGE	1156	133	
	CHECKED <i>JCM</i>	REVISED -			CONTRACT NO. 60R30					
	DATE <i>12/14/2012</i>	REVISED -			ILLINOIS FED. AID PROJECT					
				SCALE: AS SHOWN		SHEET NO. 39 OF 195 SHEETS		STA. 3890+00 TO STA. 3900+00		