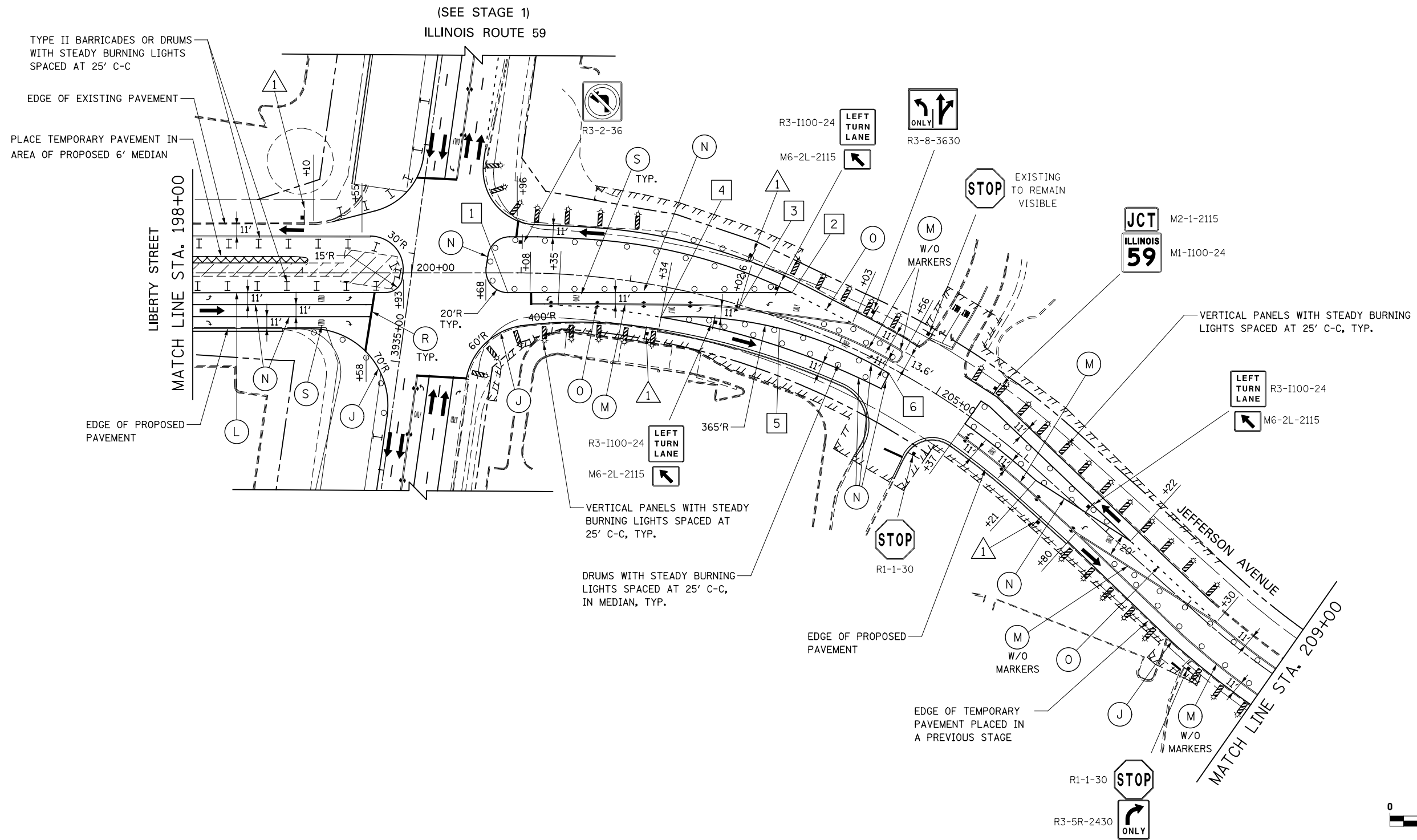


TEMPORARY PAVEMENT MARKING DATA

STATION	OFFSET	STATION	OFFSET
1	200+88 18' RT	4	202+34 28' RT
2	203+44 26' LT	5	203+44 9' RT
3	203+02.6 2.6' RT	6	204+53 6' RT

SIGN LEGEND

	WORK ZONE	W21-I115(O)-3618
	SPEED LIMIT 30	R2-1-3648
	PHOTO ENFORCED	R10-19aP-3618
	\$375 FINE MINIMUM	R21-I106-3618



TYPE II BARRICADES OR DRUMS WITH STEADY BURNING LIGHTS SPACED AT 25' C-C

EDGE OF EXISTING PAVEMENT

PLACE TEMPORARY PAVEMENT IN AREA OF PROPOSED 6' MEDIAN

LIBERTY STREET
MATCH LINE STA. 198+00

EDGE OF PROPOSED PAVEMENT

(SEE STAGE 1)
ILLINOIS ROUTE 59

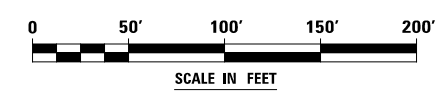
VERTICAL PANELS WITH STEADY BURNING LIGHTS SPACED AT 25' C-C, TYP.

DRUMS WITH STEADY BURNING LIGHTS SPACED AT 25' C-C, IN MEDIAN, TYP.

EDGE OF PROPOSED PAVEMENT

EDGE OF TEMPORARY PAVEMENT PLACED IN A PREVIOUS STAGE

VERTICAL PANELS WITH STEADY BURNING LIGHTS SPACED AT 25' C-C, TYP.



DESIGNED	PJO	REVISED	-
DRAWN	KES	REVISED	-
CHECKED	JCM	REVISED	-
DATE	12/14/2012	REVISED	-

STATE OF ILLINOIS
DEPARTMENT OF TRANSPORTATION

MAINTENANCE OF TRAFFIC - STAGE 1A
LIBERTY STREET / JEFFERSON AVENUE

SCALE: AS SHOWN SHEET NO. 62 OF 195 SHEETS STA. 198+00 TO STA. 209+00

F.A.P. RTE.	SECTION	COUNTY	TOTAL SHEETS	SHEET NO.
338	(112 & 113) WRS-7	DUPAGE	1156	156
				CONTRACT NO. 60R30
ILLINOIS FED. AID PROJECT				