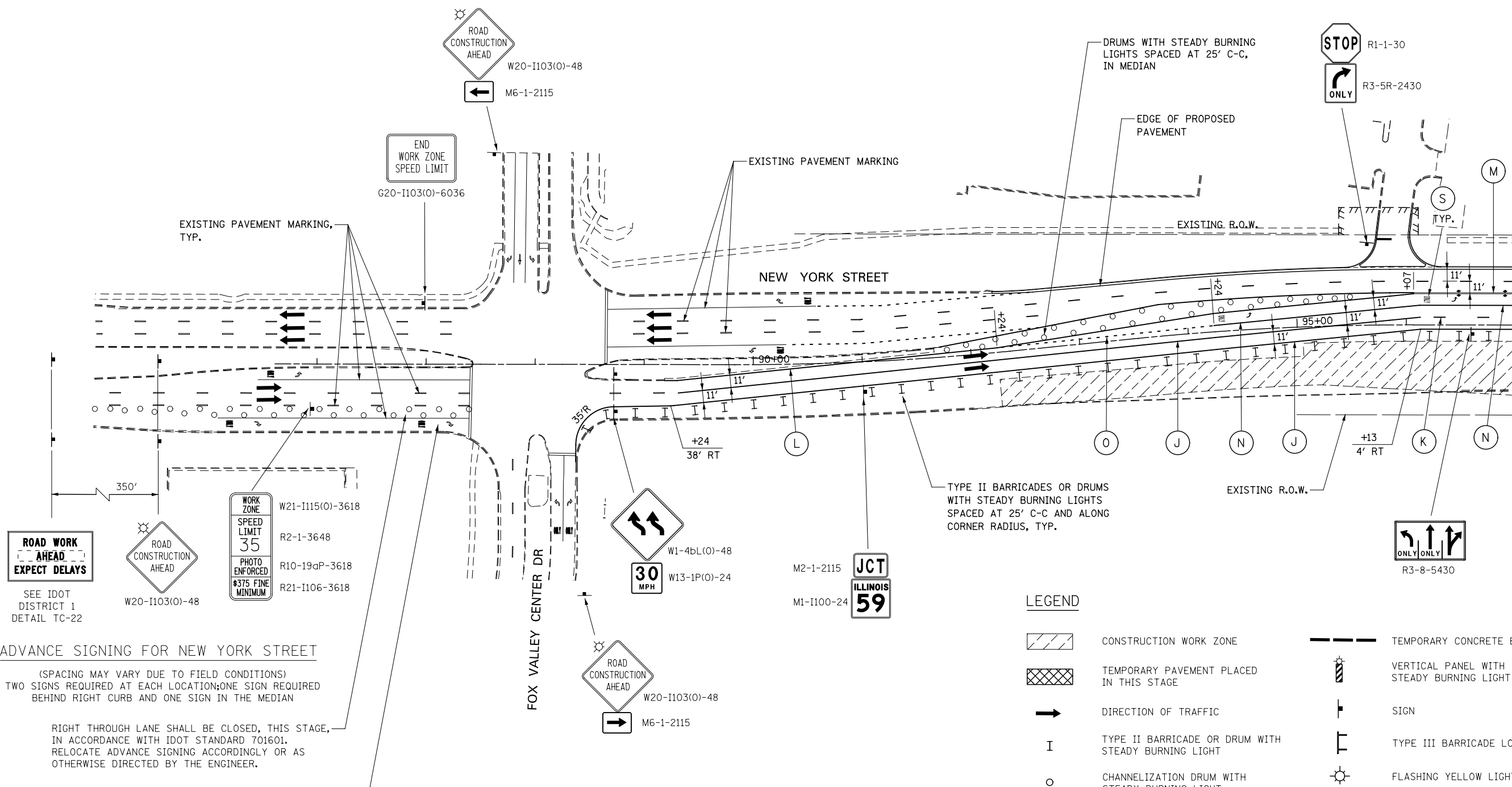




MATCH LINE STA. 97+00



ADVANCE SIGNING FOR NEW YORK STREET

(SPACING MAY VARY DUE TO FIELD CONDITIONS)
TWO SIGNS REQUIRED AT EACH LOCATION; ONE SIGN REQUIRED BEHIND RIGHT CURB AND ONE SIGN IN THE MEDIAN

RIGHT THROUGH LANE SHALL BE CLOSED, THIS STAGE, IN ACCORDANCE WITH IDOT STANDARD 701601. RELOCATE ADVANCE SIGNING ACCORDINGLY OR AS OTHERWISE DIRECTED BY THE ENGINEER.

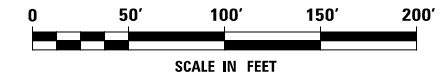
RIGHT TURN LANE TO REMAIN OPEN TO TRAFFIC IN ACCORDANCE WITH IDOT DISTRICT 1 DETAIL TC-14

MOT PAVEMENT MARKING LEGEND

- | | | |
|---|--|---|
| (A) TEMPORARY PAVEMENT MARKING - LINE 4", SOLID WHITE | (G) TEMPORARY PAVEMENT MARKING - LINE 12", SOLID YELLOW | (N) WET REFLECTIVE TEMPORARY TAPE, TYPE III, 6", SOLID WHITE |
| (B) TEMPORARY PAVEMENT MARKING - LINE 4", WHITE SKIP-DASH (10' LINE - 30' SPACE) | (H) TEMPORARY PAVEMENT MARKING - LINE 24", SOLID WHITE | (O) WET REFLECTIVE TEMPORARY TAPE, TYPE III, 6", WHITE DOTTED (2' LINE - 6' SPACE) (UNLESS OTHERWISE NOTED) |
| (C) TEMPORARY PAVEMENT MARKING - LINE 4", SOLID YELLOW | (I) TEMPORARY PAVEMENT MARKING, LETTERS & SYMBOLS | (P) WET REFLECTIVE TEMPORARY TAPE, TYPE III, 12", SOLID YELLOW |
| (D) TEMPORARY PAVEMENT MARKING - LINE 4", DOUBLE YELLOW SPACED AT 11" C-C WITH TEMPORARY RAISED REFLECTIVE PAVEMENT MARKERS SPACED 40' C-C (BI-DIRECTIONAL AMBER) | (J) WET REFLECTIVE TEMPORARY TAPE, TYPE III, 4", SOLID WHITE | (R) WET REFLECTIVE TEMPORARY TAPE, TYPE III, 24", SOLID WHITE |
| (E) TEMPORARY PAVEMENT MARKING - LINE 6", SOLID WHITE | (K) WET REFLECTIVE TEMPORARY TAPE, TYPE III, 4", WHITE SKIP-DASH (10' LINE - 30' SPACE) | (S) WET REFLECTIVE TEMPORARY TAPE, TYPE III, LETTERS & SYMBOLS |
| (F) TEMPORARY PAVEMENT MARKING - LINE 6", WHITE DOTTED (2' LINE - 6' SPACE) (UNLESS OTHERWISE NOTED) | (L) WET REFLECTIVE TEMPORARY TAPE, TYPE III, 4", SOLID YELLOW | |
| | (M) WET REFLECTIVE TEMPORARY TAPE, TYPE III, 4", DOUBLE YELLOW SPACED AT 11" C-C WITH TEMPORARY RAISED REFLECTIVE PAVEMENT MARKERS SPACED 40' C-C (BI-DIRECTIONAL AMBER) | |

LEGEND

- | | |
|---|--|
| CONSTRUCTION WORK ZONE | TEMPORARY CONCRETE BARRIER |
| TEMPORARY PAVEMENT PLACED IN THIS STAGE | VERTICAL PANEL WITH STEADY BURNING LIGHT |
| DIRECTION OF TRAFFIC | SIGN |
| TYPE II BARRICADE OR DRUM WITH STEADY BURNING LIGHT | TYPE III BARRICADE LOCATION |
| CHANNELIZATION DRUM WITH STEADY BURNING LIGHT | FLASHING YELLOW LIGHT |



DESIGNED <i>PJO</i>	REVISED -	STATE OF ILLINOIS DEPARTMENT OF TRANSPORTATION	MAINTENANCE OF TRAFFIC - STAGE 1B NEW YORK STREET		F.A.P. RTE.	SECTION	COUNTY	TOTAL SHEETS	SHEET NO.	
DRAWN <i>KES</i>	REVISED -		SCALE: AS SHOWN	SHEET NO. 70 OF 195 SHEETS	STA. 85+00	338	(112 & 113) WRS-7	DUPAGE	1156	164
CHECKED <i>JCM</i>	REVISED -					CONTRACT NO. 60R30				
DATE <i>12/14/2012</i>	REVISED -					ILLINOIS FED. AID PROJECT				