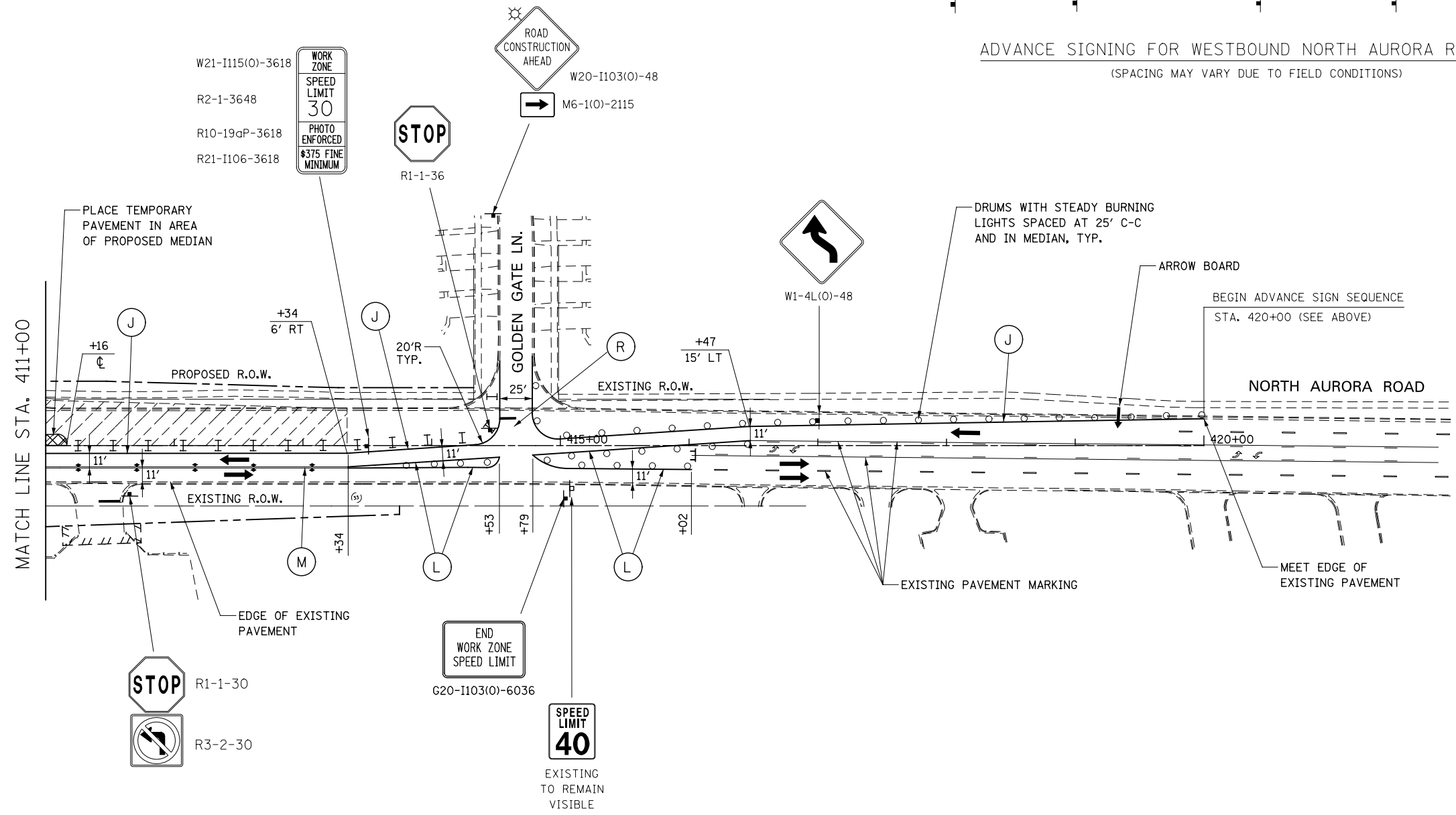


ADVANCE SIGNING FOR WESTBOUND NORTH AURORA ROAD  
(SPACING MAY VARY DUE TO FIELD CONDITIONS)



W21-I115(O)-3618  
R2-1-3648  
R10-19aP-3618  
R21-I106-3618

WORK ZONE  
SPEED LIMIT  
30  
PHOTO ENFORCED  
\$375 FINE MINIMUM

ROAD CONSTRUCTION AHEAD

W20-1103(O)-48  
M6-1(O)-2115

STOP  
R1-1-36

W1-4L(O)-48

ARROW BOARD

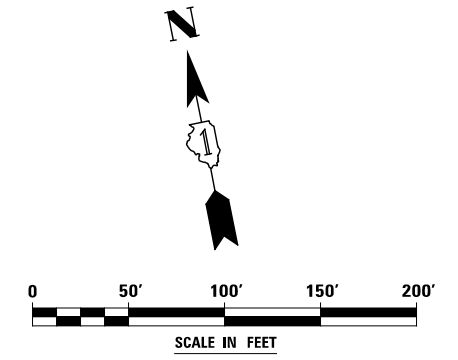
BEGIN ADVANCE SIGN SEQUENCE  
STA. 420+00 (SEE ABOVE)

STOP  
R1-1-30

R3-2-30

END WORK ZONE  
SPEED LIMIT  
G20-I103(O)-6036

SPEED LIMIT  
40  
EXISTING TO REMAIN VISIBLE



DESIGNED	PJO	REVISED	-
DRAWN	KES	REVISED	-
CHECKED	JCM	REVISED	-
DATE	12/14/2012	REVISED	-

STATE OF ILLINOIS  
DEPARTMENT OF TRANSPORTATION

MAINTENANCE OF TRAFFIC - STAGE 2A  
NORTH AURORA ROAD

SCALE: AS SHOWN SHEET NO. 117 OF 195 SHEETS STA. 411+00 TO STA. 420+00

F.A.P. RTE.	SECTION	COUNTY	TOTAL SHEETS	SHEET NO.
338	(112 & 113) WRS-7	DUPAGE	1156	211
CONTRACT NO. 60R30				
ILLINOIS FED. AID PROJECT				