

SEE ADVANCE SIGNING SEQUENCE

W21-1a(O)-48
(OMIT SIGN WHENEVER WORKERS ARE NOT PRESENT FOR OVER 1 HOUR)

STOP
EXISTING TO REMAIN VISIBLE

DRUMS WITH STEADY BURNING LIGHTS SPACED AT 25' C-C

RED FLASHING LIGHT
R1-1-30
STOP
R1-3P-186 ALL WAY

DO NOT ENTER
R5-1-36 ON TYPE III BARRICADE

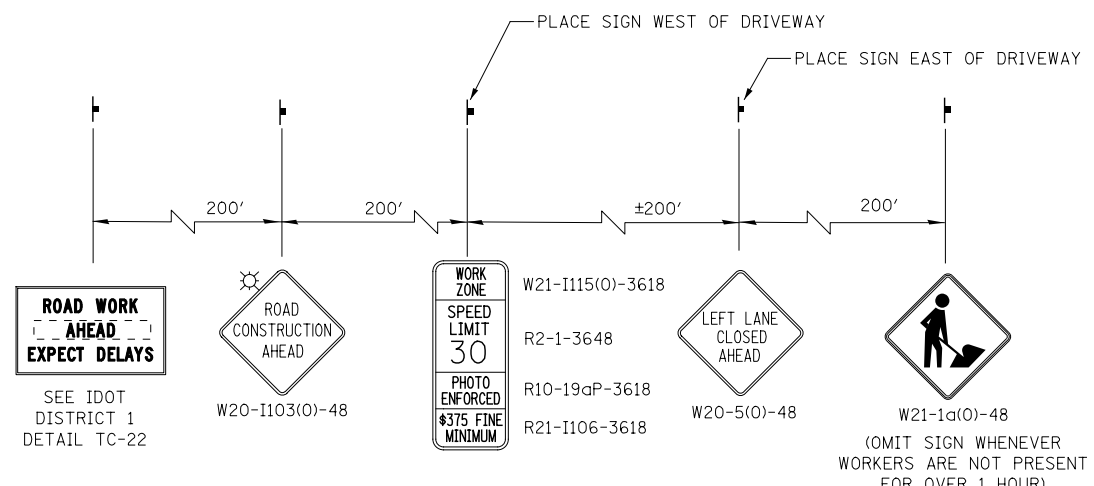
STOP
R1-1-30
ALL WAY
R1-3P-186

WORK ZONE
SPEED LIMIT 30
PHOTO ENFORCED
\$375 FINE MINIMUM
W21-1115(O)-3618
R2-1-3648
R10-19aP-3618
R21-1106-3618

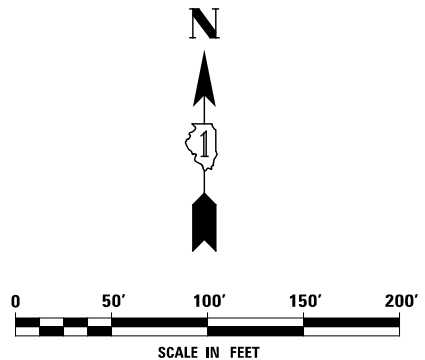
JCT
ILLINOIS 59
M2-1-2115
M1-1100-24

STOP
R1-1-30
ONLY
R3-5R-2430

DRUMS WITH STEADY BURNING LIGHTS SPACED AT 25' C-C



ADVANCE SIGNING FOR MERIDIAN PARKWAY
(SPACING MAY VARY DUE TO FIELD CONDITIONS)



DESIGNED	PJO	REVISED	-	STATE OF ILLINOIS DEPARTMENT OF TRANSPORTATION	MAINTENANCE OF TRAFFIC – STAGE 2B MERIDIAN PARKWAY		F.A.P. RTE.	SECTION	COUNTY	TOTAL SHEETS	SHEET NO.		
DRAWN	KES	REVISED	-		SCALE: AS SHOWN	SHEET NO. 122 OF 195 SHEETS	STA. 288+00	TO STA. 298+00	338	(112 & 113) WRS-7	DUPAGE	1156	216
CHECKED	JCM	REVISED	-		CONTRACT NO. 60R30								
DATE	12/14/2012	REVISED	-		ILLINOIS FED. AID PROJECT								