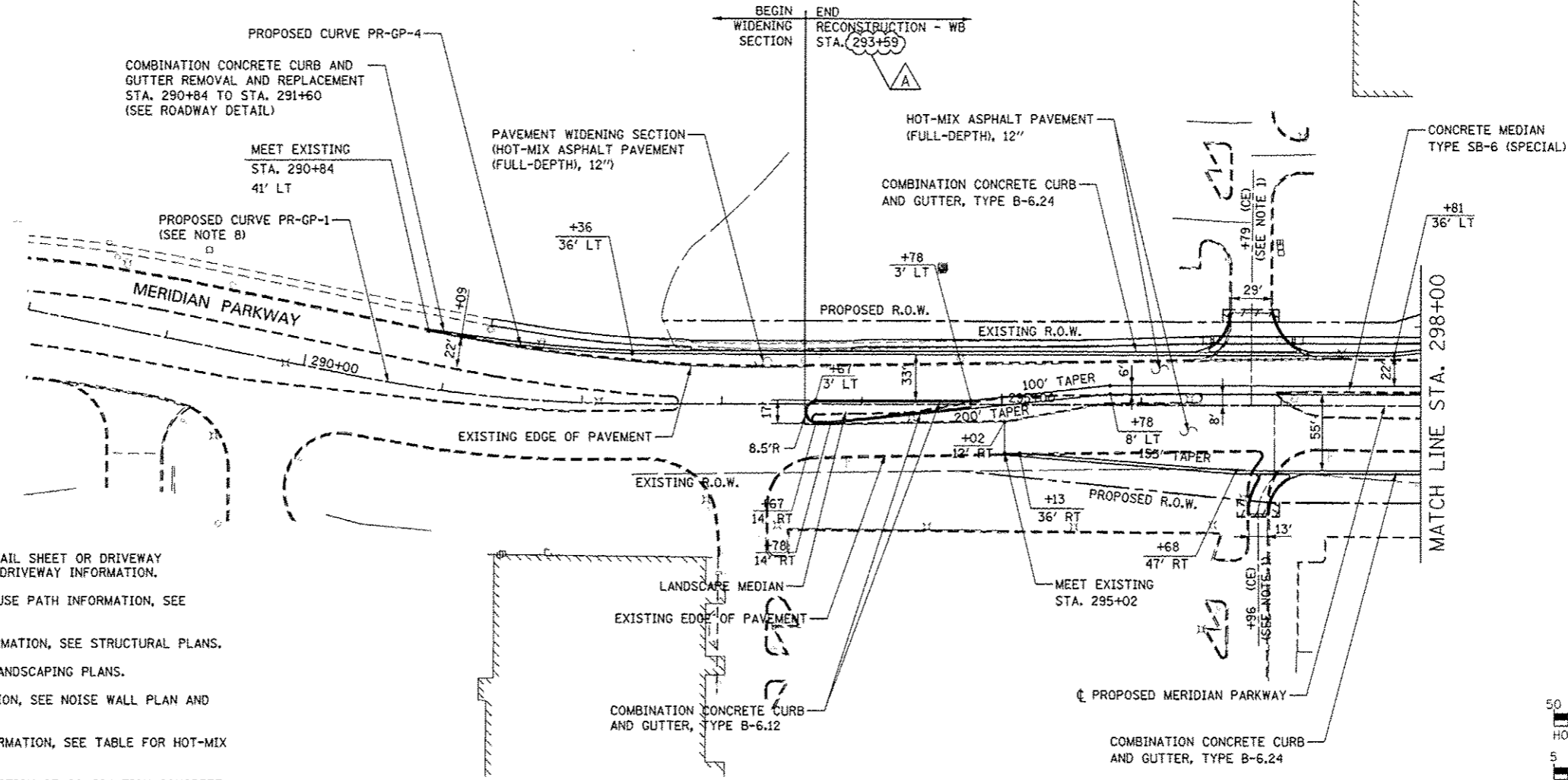


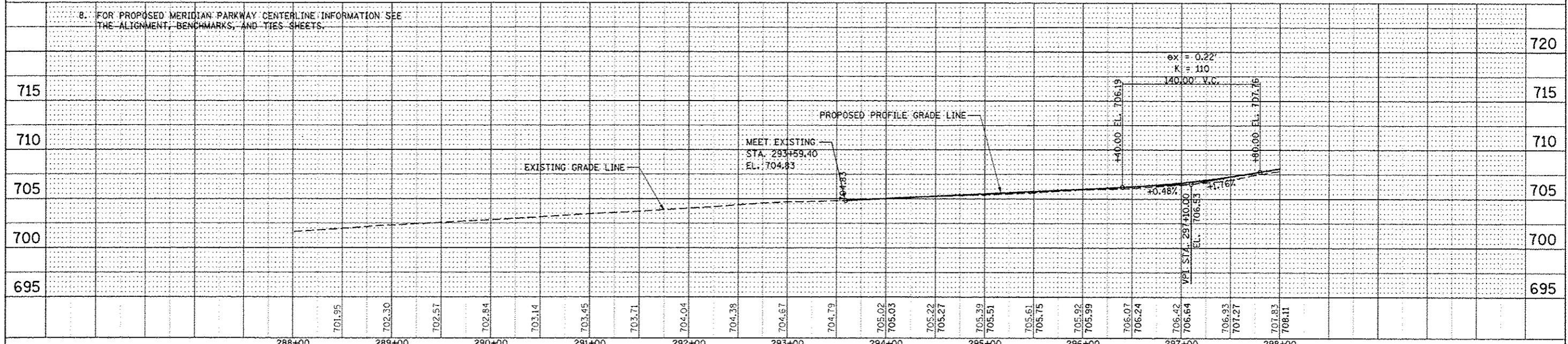
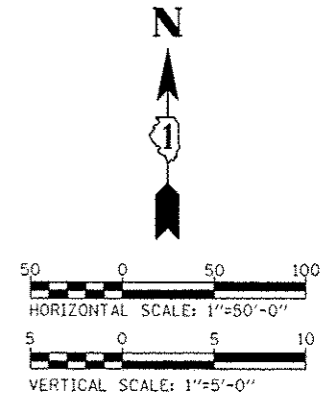
PLAN	DATE
BY	
DESIGNED	
DRAWN	
CHECKED	
DATE	

PROFILE	DATE
BY	
DESIGNED	
DRAWN	
CHECKED	
DATE	



NOTES:

- SEE CORRESPONDING INTERSECTION DETAIL SHEET OR DRIVEWAY DETAILS SHEET FOR INTERSECTION OR DRIVEWAY INFORMATION.
- FOR PROPOSED SIDEWALK AND SHARED-USE PATH INFORMATION, SEE SIDEWALK/SHARED-USED PATH PLANS.
- FOR PROPOSED RETAINING WALLS INFORMATION, SEE STRUCTURAL PLANS.
- FOR LANDSCAPING INFORMATION, SEE LANDSCAPING PLANS.
- FOR PROPOSED NOISE WALLS INFORMATION, SEE NOISE WALL PLAN AND PROFILE SHEETS.
- FOR HMA ASPHALT PAVEMENT MIX INFORMATION, SEE TABLE FOR HOT-MIX ASPHALT MIXTURE REQUIREMENT.
- ALL WORK REQUIRED FOR THE CONSTRUCTION OF COMBINATION CONCRETE CURB AND GUTTER TRANSITION SHALL BE PAID FOR AS COMBINATION CURB AND GUTTER, TYPE B-6.24
- FOR PROPOSED MERIDIAN PARKWAY CENTERLINE INFORMATION SEE THE ALIGNMENT, BENCHMARKS, AND TIES SHEETS.



DESIGNED	PJO	REVISED - ADDENDUM A 02/20/2013
DRAWN	KES	REVISED -
CHECKED	JCM	REVISED -
DATE	12/14/2012	REVISED -

**STATE OF ILLINOIS
DEPARTMENT OF TRANSPORTATION**

PLAN AND PROFILE - MERIDIAN PARKWAY

SCALE: AS SHOWN SHEET NO. 12 OF 16 SHEETS STA. 290+84 TO STA. 298+00

F.A.P. RTE.	SECTION	COUNTY	TOTAL SHEETS	SHEET NO.
33B	(112 & 113) WRS-7	DUPAGE	1156	312
CONTRACT NO. 60R30				
FED. ROAD DIST. NO. ILLINOIS FED. AID PROJECT				