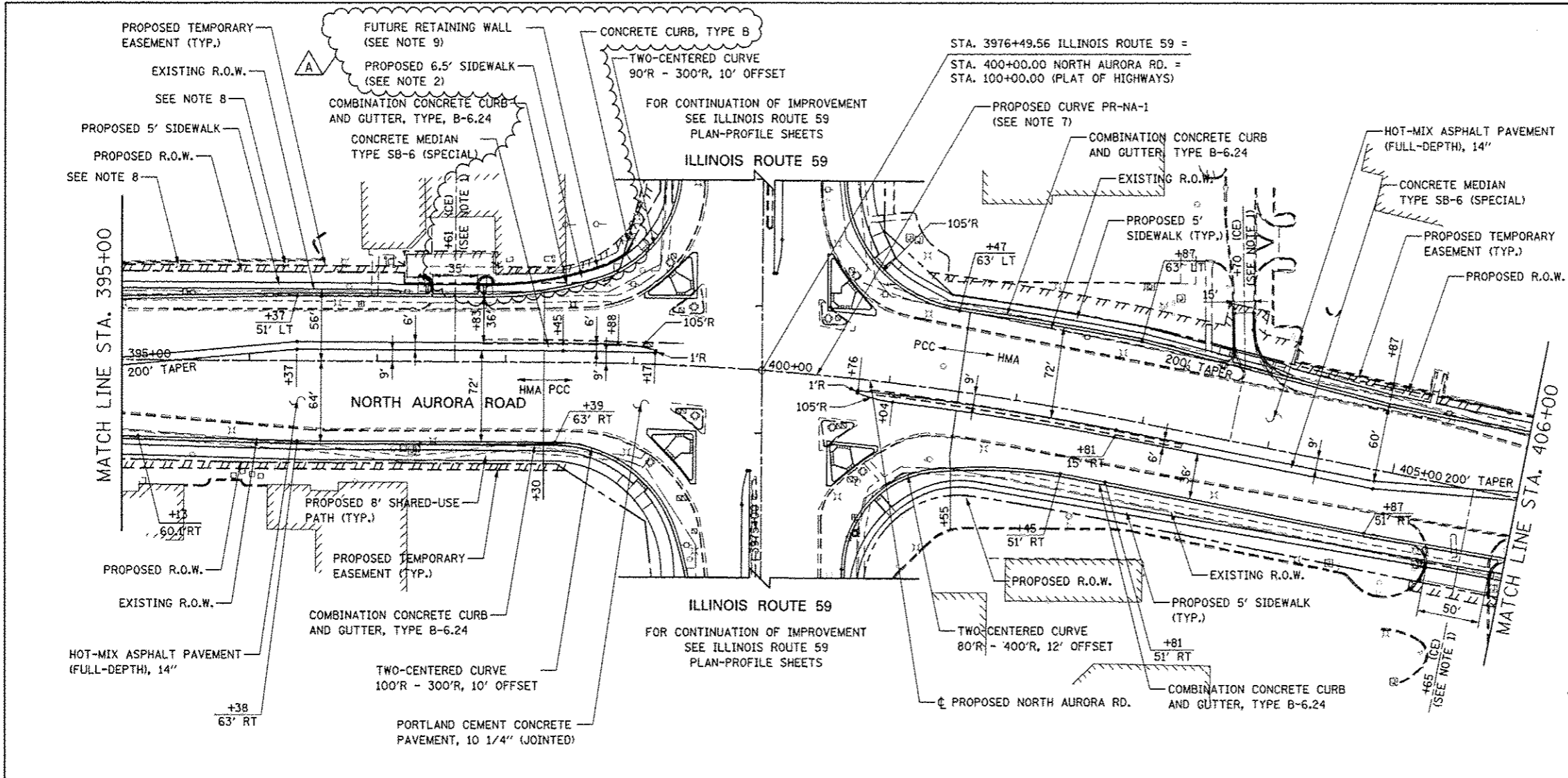
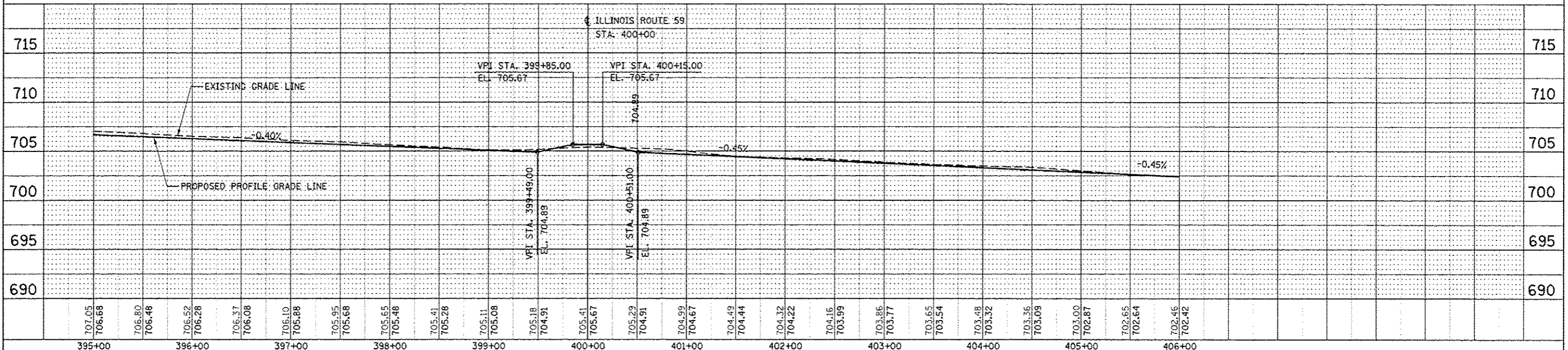
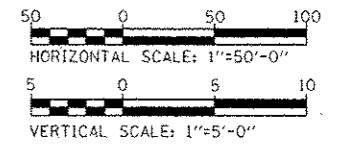
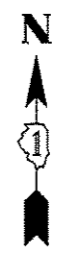


|             |      |
|-------------|------|
| PLAN        | DATE |
| BY          |      |
| REVISIONS   |      |
| NO.         |      |
| DATE        |      |
| BY          |      |
| DESCRIPTION |      |
| NO.         |      |
| DATE        |      |
| BY          |      |
| DESCRIPTION |      |

|             |      |
|-------------|------|
| PROFILE     | DATE |
| BY          |      |
| REVISIONS   |      |
| NO.         |      |
| DATE        |      |
| BY          |      |
| DESCRIPTION |      |
| NO.         |      |
| DATE        |      |
| BY          |      |
| DESCRIPTION |      |



- NOTES:**
- SEE CORRESPONDING INTERSECTION DETAIL SHEET OR DRIVEWAY DETAILS SHEET FOR INTERSECTION OR DRIVEWAY INFORMATION.
  - FOR PROPOSED SIDEWALK AND SHARED-USE PATH INFORMATION, SEE SIDEWALK/SHARED-USED PATH PLANS.
  - FOR PROPOSED RETAINING WALLS INFORMATION, SEE STRUCTURAL PLANS.
  - FOR LANDSCAPING INFORMATION, SEE LANDSCAPING PLANS.
  - FOR PROPOSED NOISE WALLS INFORMATION, SEE NOISE WALL PLAN AND PROFILE SHEETS.
  - FOR HMA ASPHALT PAVEMENT MIX INFORMATION, SEE TABLE FOR HOT-MIX ASPHALT MIXTURE REQUIREMENT.
  - FOR PROPOSED NORTH AURORA ROAD CENTERLINE INFORMATION SEE THE ALIGNMENT, BENCHMARKS, AND TIES SHEETS.
  - THE EXISTING PRIVATE LIGHT POLE WITHIN THE TEMPORARY EASEMENT WILL REMAIN. UTMOST CARE SHALL BE TAKEN WHEN WORK TAKES PLACE IN THE VICINITY OF THE LIGHT POLE. ANY DAMAGE TO THE LIGHT POLE BY THE CONTRACTOR AS DETERMINED BY THE ENGINEER SHALL BE REPAIRED OR REPLACED AT THE CONTRACTOR'S OWN EXPENSE. NO ADDITIONAL COMPENSATION TO THE CONTRACT WILL BE ADDED FOR THIS WORK.
  - FUTURE RETAINING WALL TO BE INCLUDED IN THIS CONTRACT, SEE SHEET 876A FOR ADDITIONAL INFORMATION.



|                        |                                 |   |  |                   |             |         |        |              |           |
|------------------------|---------------------------------|---|--|-------------------|-------------|---------|--------|--------------|-----------|
| DESIGNED <i>PJO</i>    | REVISED - ADDENDUM A 02/20/2013 | <b>STATE OF ILLINOIS<br/>DEPARTMENT OF TRANSPORTATION</b> | <b>PLAN AND PROFILE - NORTH AURORA ROAD</b>                          |                   | F.A.P. RTE. | SECTION | COUNTY | TOTAL SHEETS | SHEET NO. |
| DRAWN <i>KES</i>       | REVISED -                       |   | 338  | (112 & 113) WRS-7 | DUPAGE      | 1156    | 315    |              |           |
| CHECKED <i>JCM</i>     | REVISED -                       |   | CONTRACT NO. 60R30   |                   |             |         |        |              |           |
| DATE <i>12/14/2012</i> | REVISED -                       |   | SCALE: AS SHOWN SHEET NO. 15 OF 16 SHEETS STA. 395+00 TO STA. 406+00 |                   |             |         |        |              |           |