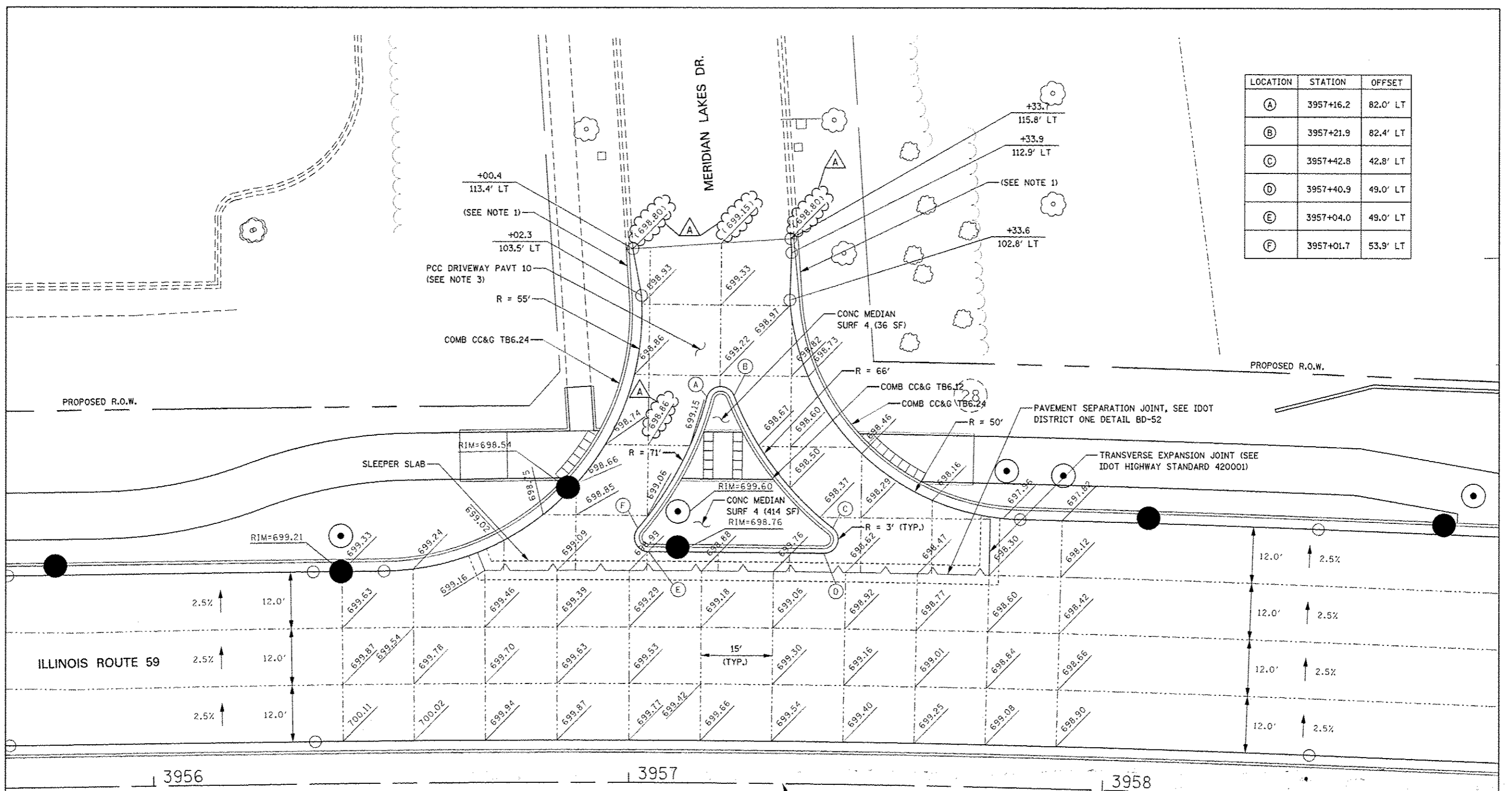
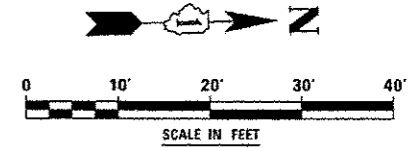


LOCATION	STATION	OFFSET
(A)	3957+16.2	82.0' LT
(B)	3957+21.9	82.4' LT
(C)	3957+42.8	42.8' LT
(D)	3957+40.9	49.0' LT
(E)	3957+04.0	49.0' LT
(F)	3957+01.7	53.9' LT



- NOTES:**
1. COMBINATION CONCRETE CURB AND GUTTER TRANSITION, FROM TYPE B-6.24 TO TYPE B-6.12 SHALL BE PAID FOR AS "COMBINATION CONCRETE CURB AND GUTTER, TYPE B-6.24", AND ADDITIONAL COMPENSATION WILL BE MADE.
 2. REFER TO STANDARDS 420001, 420101 AND 420106 FOR JOINT DETAILS AND SPACING.
 3. SEE ROADWAY DETAILS FOR MORE INFORMATION.



DESIGNED <i>PJO</i>	REVISED - ADDENDUM A 02/20/2013	STATE OF ILLINOIS DEPARTMENT OF TRANSPORTATION	INTERSECTION DETAILS		F.A.P. RTE.	SECTION	COUNTY	TOTAL SHEETS	SHEET NO.
DRAWN <i>KES</i>	REVISED -		ILLINOIS ROUTE 59 AND MERIDIAN LAKES DR.		338	(112 & 113) WRS-7	DUPAGE	1156	368
CHECKED <i>JCM</i>	REVISED -		SCALE: AS SHOWN SHEET NO. 5 OF 9 SHEETS STA. 3955+69 TO STA. 3958+84		CONTRACT NO. 60R30				
DATE <i>12/14/2012</i>	REVISED -		ILLINOIS FED. AID PROJECT						