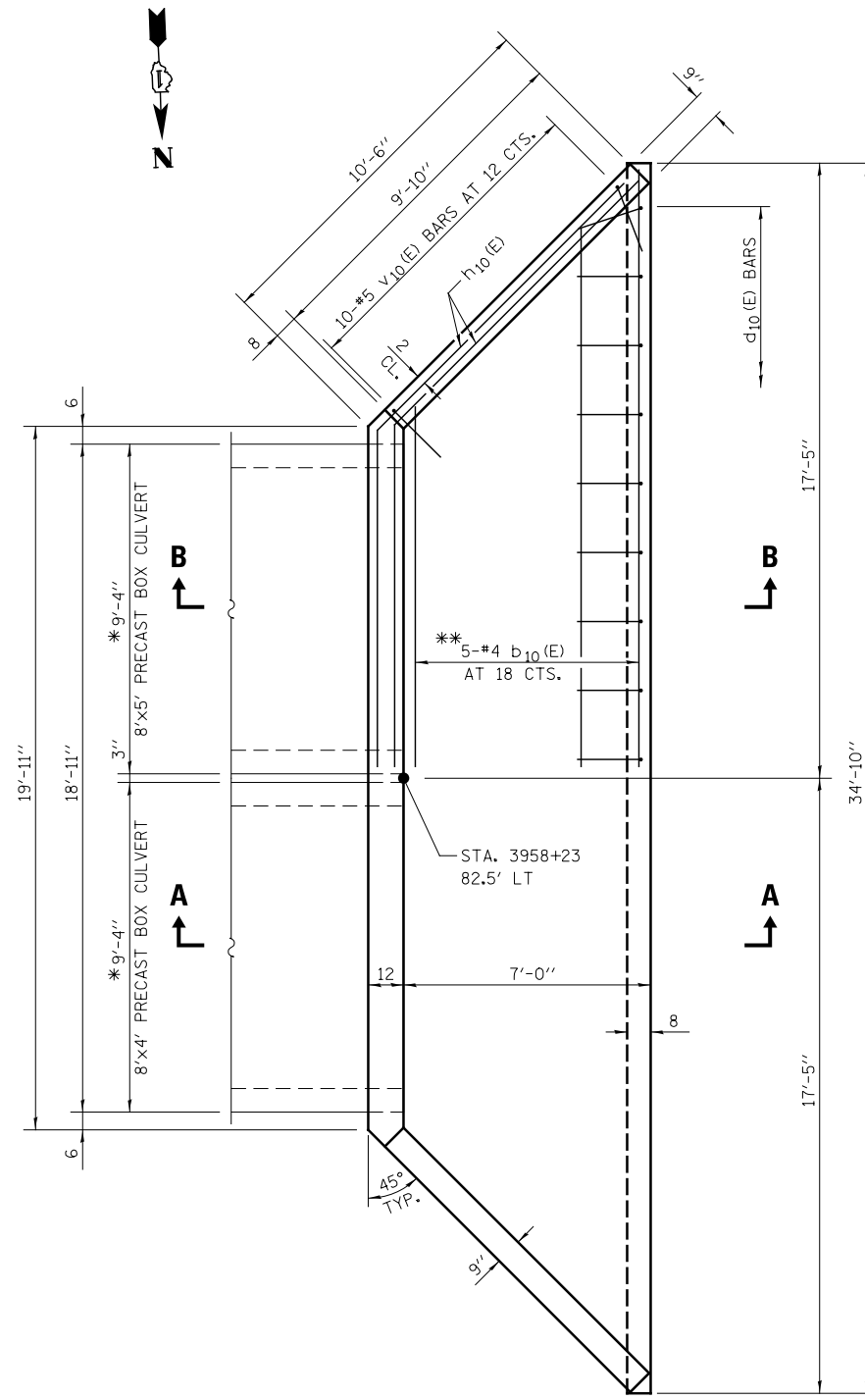


**BILL OF MATERIALS**

BAR	NO.	SIZE	LENGTH	SHAPE
b <sub>10</sub> (E)	7	#4	34'-6"	—
d <sub>10</sub> (E)	24	#4	5'-4"	└
h <sub>10</sub> (E)	16	#4	21'-3"	└
h <sub>11</sub> (E)	12	#4	10'-0"	—
h <sub>12</sub> (E)	3	#4	19'-6"	—
h <sub>13</sub> (E)	2	#4	9'-6"	—
s <sub>10</sub> (E)	21	#4	6'-9"	└
v <sub>10</sub> (E)	20	#5	4'-10"	└
v <sub>11</sub> (E)	20	#4	6'-6"	—
v <sub>12</sub> (E)	4	#4	11'-0"	└
REINFORCEMENT BARS, EPOXY COATED			POUND	920
CONCRETE STRUCTURES			CU YD	16.1
NAME PLATES			EACH	1



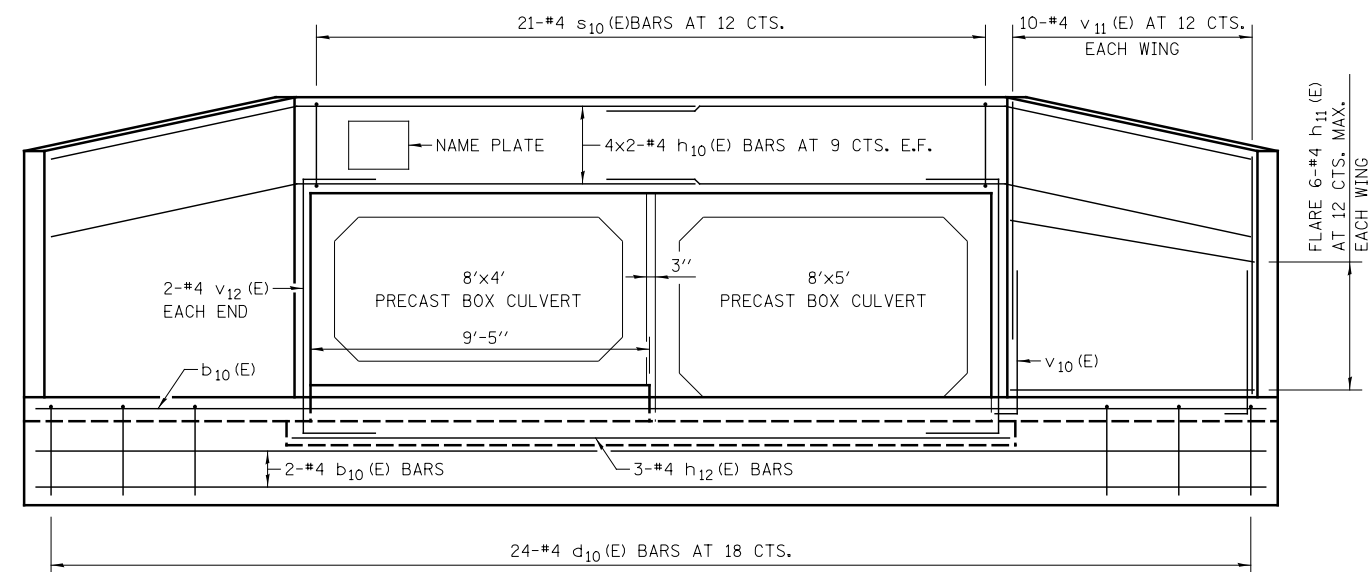
**PLAN**

\*\*CUT BARS TO FIT

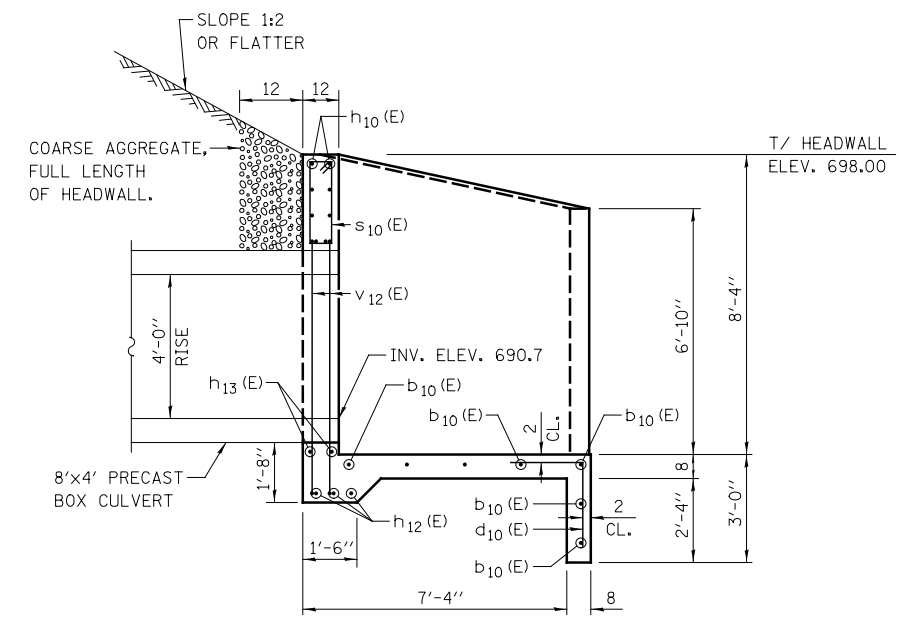
STATION 3958+23.9  
 BUILT 20 BY  
 STATE OF ILLINOIS  
 F.A.P. RTE. 338 SEC. (112 & 113) WRS-7  
 LOADING HL-93  
 STRUCTURE NO. 022-0010

**NAME PLATE**

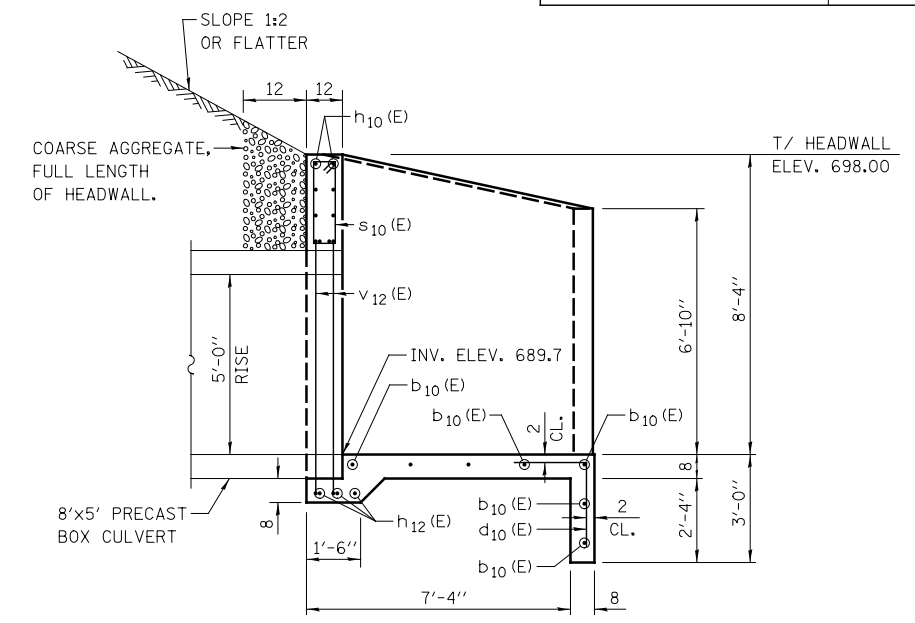
SEE STD. 515001



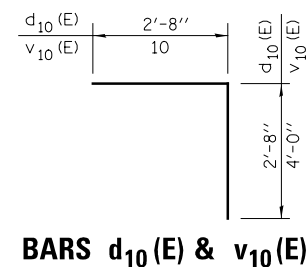
**END ELEVATION**



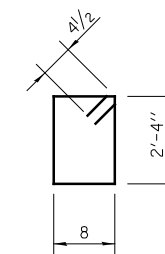
**SECTION A-A**



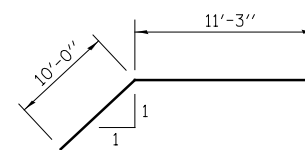
**SECTION B-B**



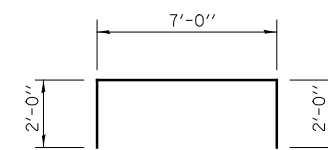
**BARS d<sub>10</sub>(E) & v<sub>10</sub>(E)**



**BAR s<sub>10</sub>(E)**



**BAR h<sub>10</sub>(E)**



**BAR v<sub>12</sub>(E)**

**GENERAL NOTES**

- REINFORCEMENT BARS DESIGNATED (E) SHALL BE EPOXY COATED.
- SEE SHEET DP-16 FOR BOX CULVERT DETAILS.
- \*VERIFY DIMENSION WITH PRECAST BOX CULVERT FABRICATOR.
- ALL SLOPE RATIOS ARE EXPRESSED AS UNITS OF VERTICAL DISPLACEMENT TO UNITS OF HORIZONTAL DISPLACEMENT (V:H).
- ALL DIMENSIONS ARE IN INCHES UNLESS OTHERWISE SHOWN.
- BARS NOTED THUS, 3X2-#5 INDICATES 3 LINES OF BARS WITH 2 LENGTHS OF BARS PER LINE

DESIGNED	TB	REVISED	-
DRAWN	TB	REVISED	-
CHECKED	WPM	REVISED	-
DATE	12/14/2012	REVISED	-

STATE OF ILLINOIS  
 DEPARTMENT OF TRANSPORTATION

DRAINAGE DETAILS  
 REINFORCED CONCRETE END SECTION STA. 3958 + 23

SCALE: NONE SHEET NO. 1 OF 1 SHEETS STA. TO STA.

F.A.P. RTE.	SECTION	COUNTY	TOTAL SHEETS	SHEET NO.
338	(112 & 113) WRS-7	DUPAGE	1156	502
<b>DD-03</b>		CONTRACT NO. 60R30		
ILLINOIS FED. AID PROJECT				