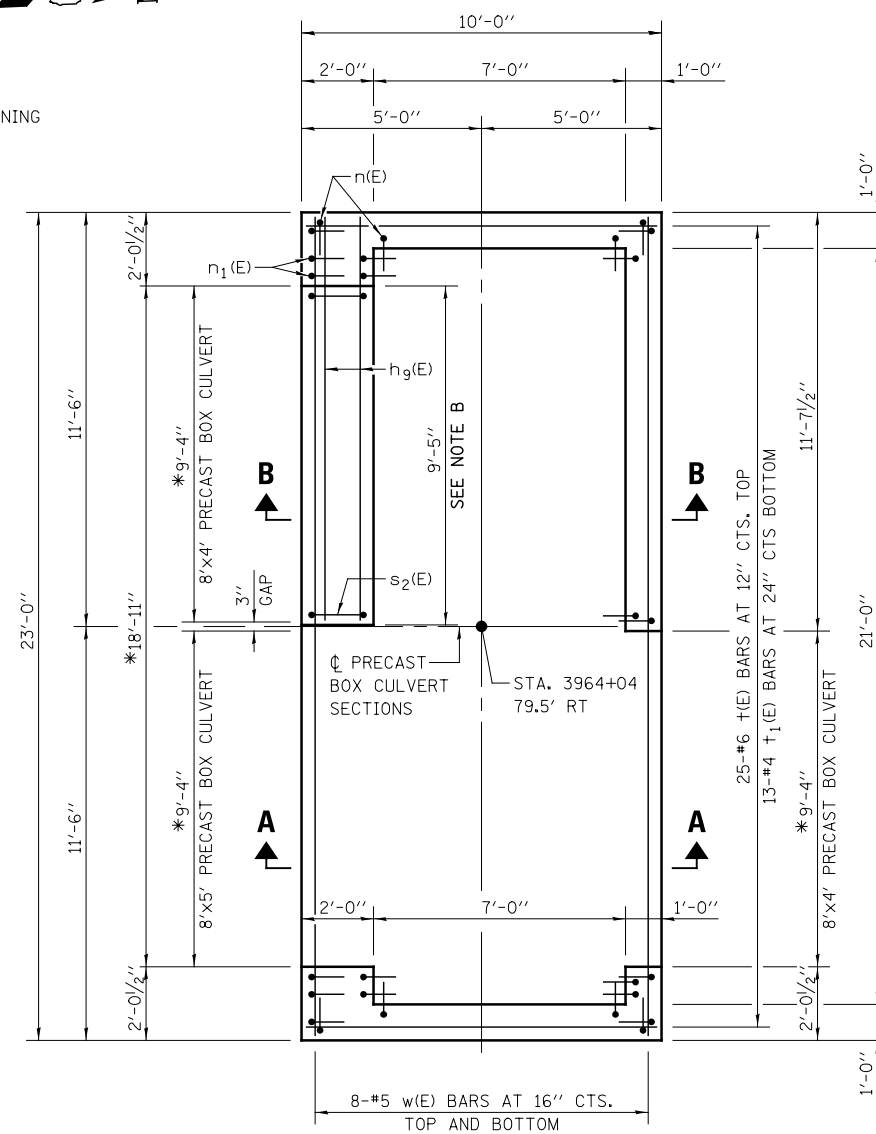


TOP SLAB PLAN

NOTE A

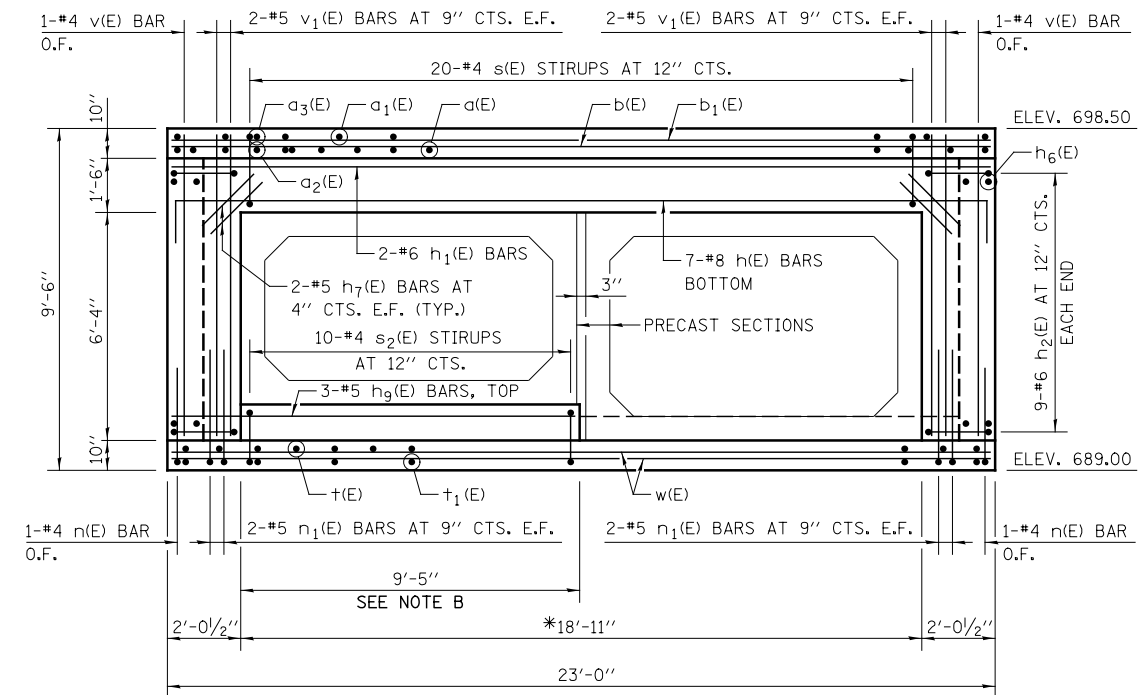
PROVIDE A 2'-11" Ø 1" DEEP RECESS IN THE TOP SLAB, CENTERED OVER THE 2'-0" OPENING, FOR THE FRAME AND LID. FRAME SHALL BE SET ON AN INITIAL 3/8" MIN. GROUT BED (2:1 SAND AND PORTLAND CEMENT, VERY DRY MIX) TO MATCH RIM ELEVATION SHOWN ON DRAINAGE PLANS.



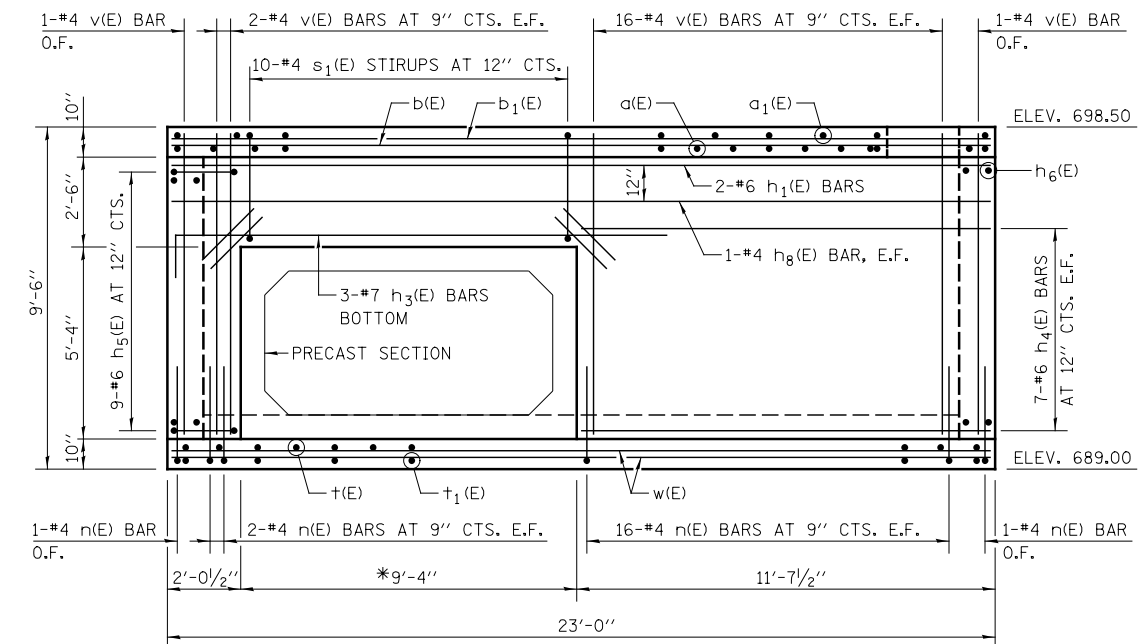
BOTTOM SLAB PLAN

NOTE B

ADJUST DIMENSION, AS REQUIRED, BASED ON PRECAST BOX CULVERT WIDTH. DIMENSION SHALL BE PRECAST BOX CULVERT WIDTH + 1 INCH.



SOUTH WALL ELEVATION



NORTH WALL ELEVATION

GENERAL NOTES

REINFORCEMENT BARS DESIGNATED (E) SHALL BE EPOXY COATED.

SEE SHEET DD-05 FOR SECTIONS A-A AND B-B, ADDITIONAL ELEVATIONS AND DETAILS.

SEE SHEET DP-16 FOR BOX CULVERT DETAILS.

*VERIFY DIMENSION WITH PRECAST BOX CULVERT FABRICATOR

LEGEND

E.F. EACH FACE
I.F. INSIDE FACE
O.F. OUTSIDE FACE

DESIGNED	TB	REVISED	-
DRAWN	TB	REVISED	-
CHECKED	WPM	REVISED	-
DATE	12/14/2012	REVISED	-

STATE OF ILLINOIS
DEPARTMENT OF TRANSPORTATION

DRAINAGE DETAILS
JUNCTION CHAMBER STA. 3964 + 04

SCALE: NONE SHEET NO. 1 OF 2 SHEETS STA. TO STA.

F.A.P. RTE.	SECTION	COUNTY	TOTAL SHEETS	SHEET NO.
338	(112 & 113) WRS-7	DUPAGE	1156	503
DD-04		CONTRACT NO. 60R30		
ILLINOIS FED. AID PROJECT				