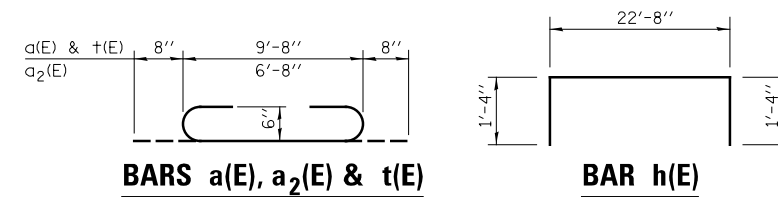


BILL OF MATERIALS

BAR	NO.	SIZE	LENGTH	SHAPE
a(E)	24	#6	11'-0"	U
a ₁ (E)	15	#5	9'-8"	—
a ₂ (E)	2	#6	8'-0"	U
a ₃ (E)	2	#5	6'-8"	—
b(E)	10	#6	22'-8"	—
b ₁ (E)	10	#4	22'-8"	—
b ₂ (E)	2	#6	19'-8"	—
b ₃ (E)	2	#4	19'-8"	—
b ₄ (E)	2	#6	7'-6"	—
h(E)	7	#8	25'-4"	□
h ₁ (E)	4	#6	22'-8"	—
h ₂ (E)	18	#5	7'-7"	□
h ₃ (E)	3	#7	14'-8"	□
h ₄ (E)	14	#6	11'-3"	—
h ₅ (E)	9	#5	5'-7"	□
h ₆ (E)	36	#6	9'-8"	—
h ₇ (E)	16	#5	2'-0"	—
h ₈ (E)	2	#4	22'-8"	—
h ₉ (E)	3	#5	11'-0"	—
n(E)	88	#4	3'-2"	L
n ₁ (E)	8	#5	3'-10"	L
s(E)	20	#4	8'-1"	□
s ₁ (E)	10	#4	8'-1"	□
s ₂ (E)	10	#4	7'-1"	□
t(E)	25	#6	11'-0"	U
t ₁ (E)	13	#4	9'-8"	—
v(E)	88	#4	8'-4"	—
v ₁ (E)	8	#5	8'-4"	—
w(E)	16	#5	22'-8"	—
REINFORCEMENT BARS, EPOXY COATED			POUND	4800
CONCRETE STRUCTURES			CU YD	33.7
FRAMES AND LIDS, TYPE 1, OPEN LID			EACH	1
CAST IRON STEPS			EACH	5

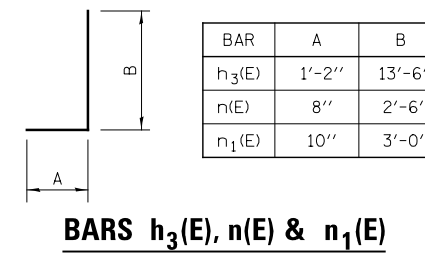
NOTE B

SPACE CAST IRON STEPS AT 12" TO 18", EQUAL SPACES, AND 8" FROM TOP OF SLAB.

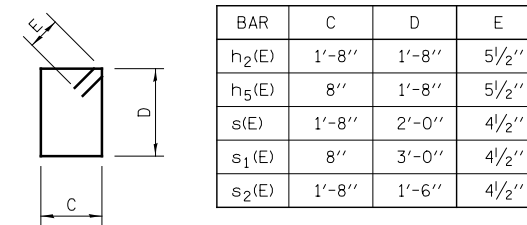


BARS a(E), a₂(E) & t(E)

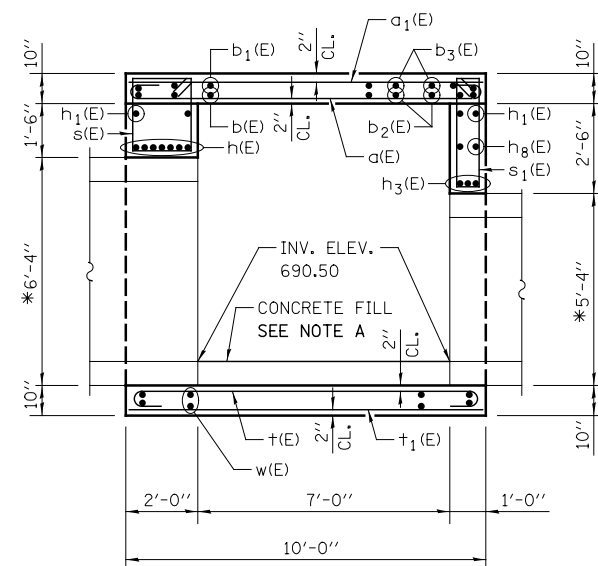
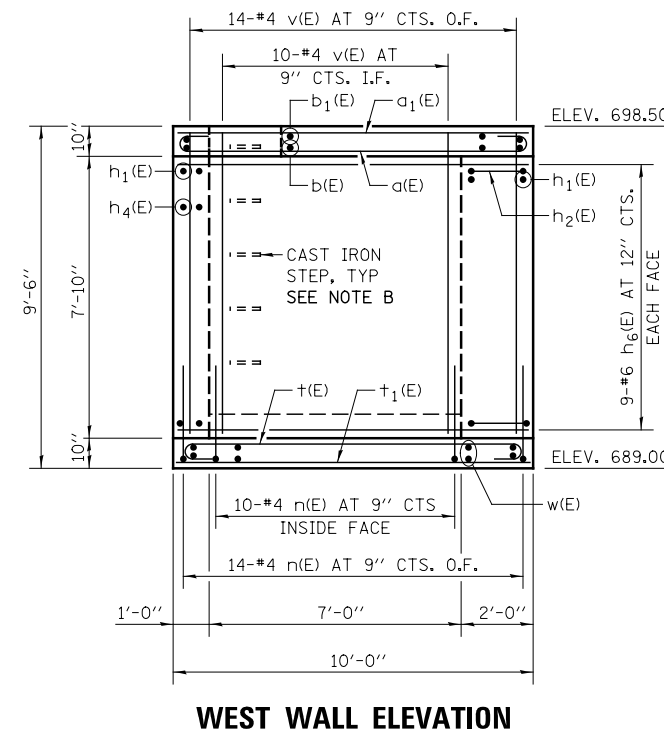
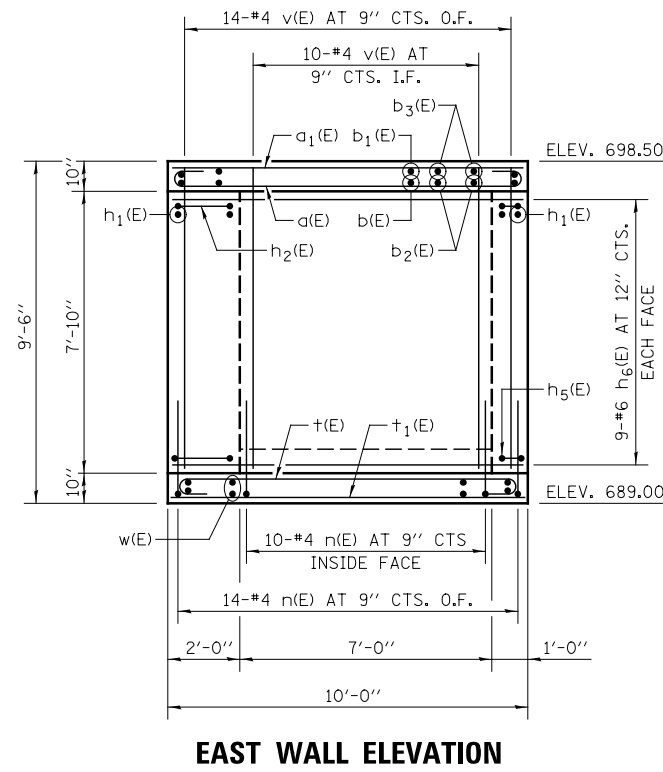
BAR h(E)



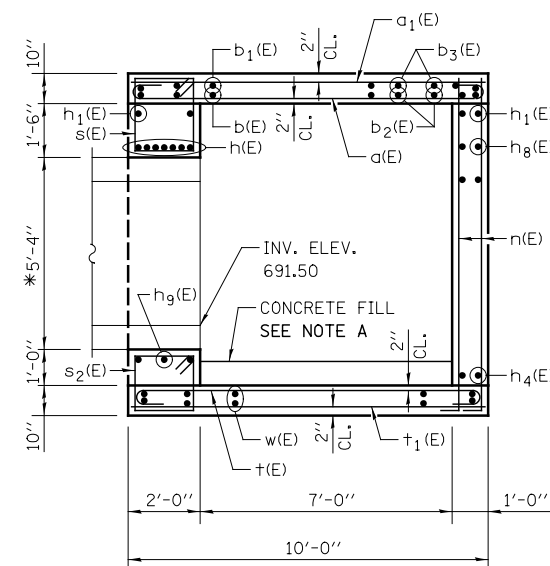
BARS h₃(E), n(E) & n₁(E)



BARS h₂(E), h₅(E), s(E), s₁(E) & s₂(E)



SECTION A-A



SECTION B-B

NOTE A

PLACE CONCRETE FILL AFTER INSTALLATION OF BOX CULVERT AND JUNCTION CHAMBER WALLS. MATCH TOP OF FILL ELEVATION TO BOX CULVERT INVERT ELEVATION 690.50.

LEGEND

E.F. EACH FACE
 I.F. INSIDE FACE
 O.F. OUTSIDE FACE

GENERAL NOTES

REINFORCEMENT BARS DESIGNATED (E) SHALL BE EPOXY COATED.

SEE SHEET DP-16 FOR BOX CULVERT DETAILS.

SEE STANDARD 602401 FOR DETAILS OF CAST IRON STEPS.

SEE STANDARD 604001 FOR DETAILS OF FRAME AND LID.

*VERIFY DIMENSION WITH PRECAST BOX CULVERT FABRICATOR

DESIGNED	TB	REVISED	-
DRAWN	TB	REVISED	-
CHECKED	WPM	REVISED	-
DATE	12/14/2012	REVISED	-

**STATE OF ILLINOIS
 DEPARTMENT OF TRANSPORTATION**

DRAINAGE DETAILS		F.A.P. RTE.	SECTION	COUNTY	TOTAL SHEETS	SHEET NO.
JUNCTION CHAMBER STA. 3964 + 04		338	(112 & 113) WRS-7	DUPAGE	1156	504
SCALE: NONE		SHEET NO. 2 OF 2 SHEETS		STA.	TO STA.	
		DD-05		CONTRACT NO. 60R30		
ILLINOIS FED. AID PROJECT						