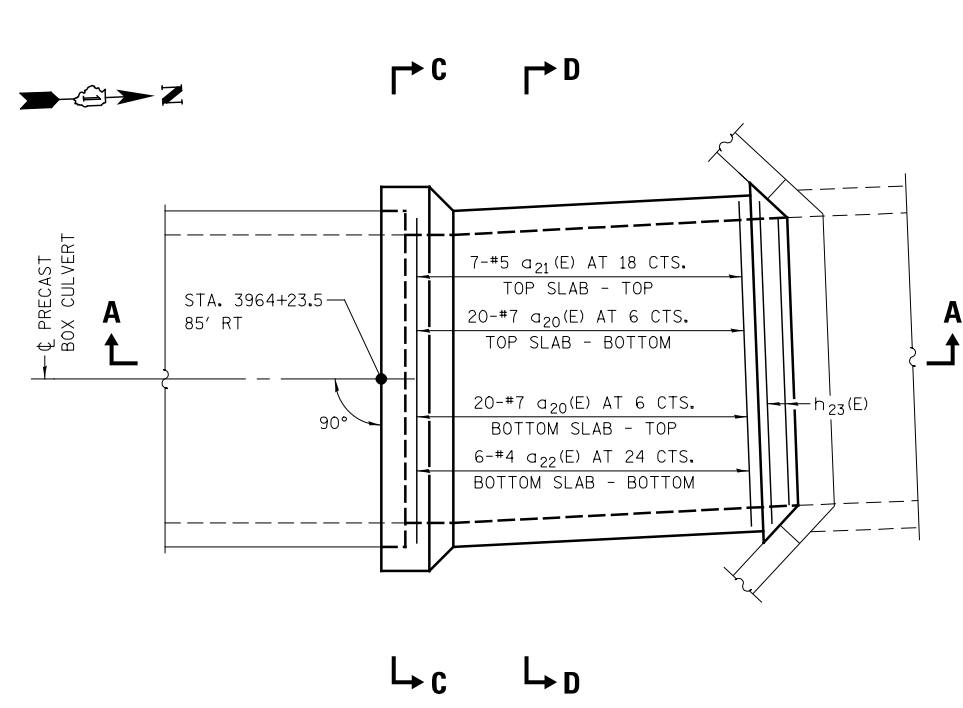


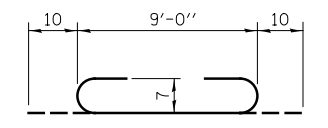
PLAN

SHOWING DIMENSIONS

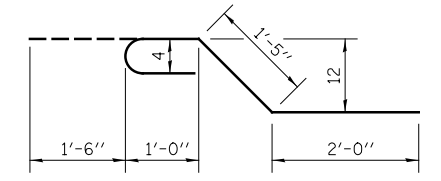


PLAN

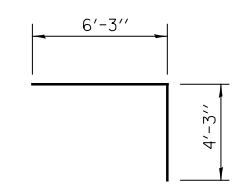
SHOWING REINFORCEMENT



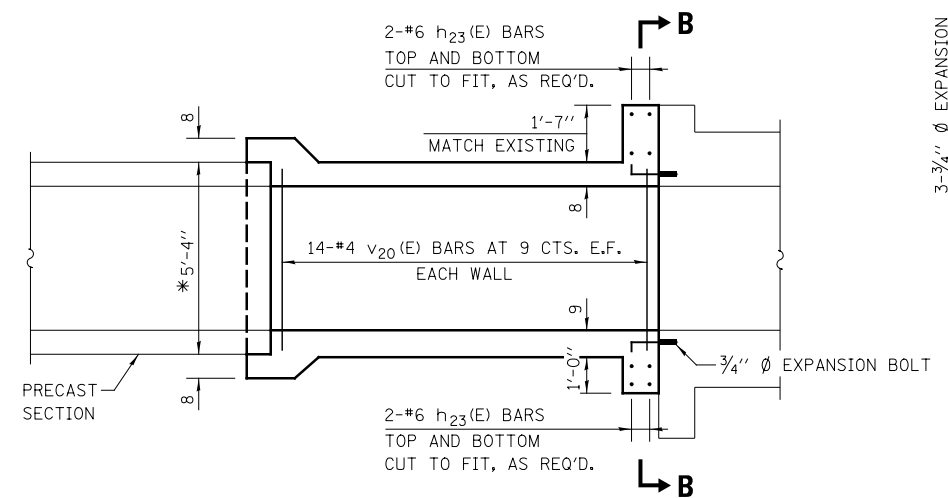
BAR a20(E)



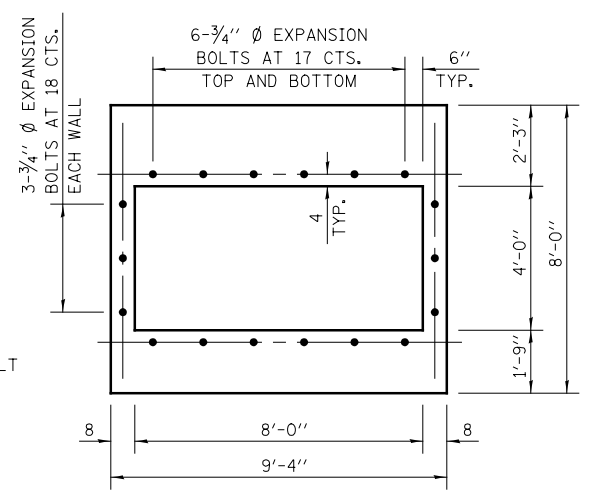
BAR x20(E)



BAR x21(E)

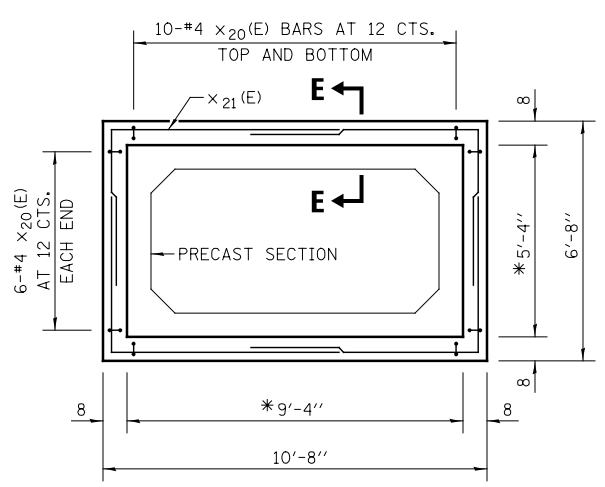


SECTION A-A

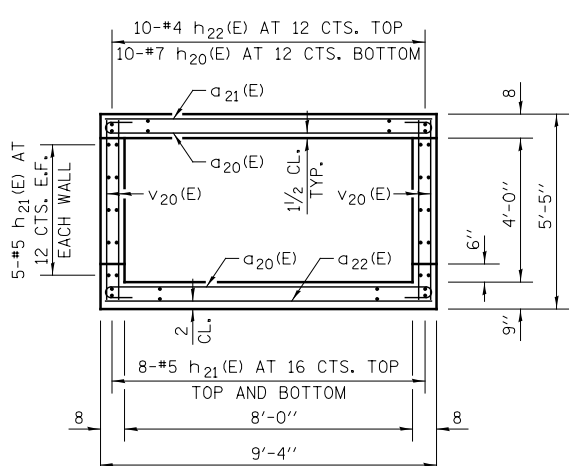


SECTION B-B

NOTE:
EXPANSION BOLTS SHALL BE 3/4" Ø HOOKED BOLTS. HOOK SHALL BE 3" MINIMUM. HOOKED BOLTS SHALL EXTEND A MINIMUM OF 9" INTO NEW CONCRETE.

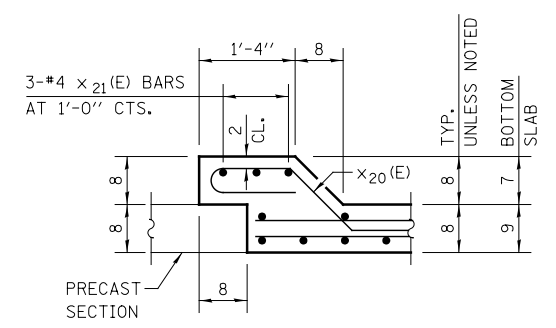


SECTION C-C



SECTION D-D

TILT HOOK OF a20(E) BAR TO PROVIDE SPECIFIED CLEARANCE



SECTION E-E

BILL OF MATERIALS

BAR	NO.	SIZE	LENGTH	SHAPE
a20(E)	40	#7	10'-8"	
a21(E)	7	#5	9'-0"	
a22(E)	6	#4	9'-0"	
h20(E)	10	#7	10'-0"	
h21(E)	36	#5	10'-0"	
h22(E)	10	#4	10'-0"	
h23(E)	8	#6	9'-6"	
v20(E)	56	#4	5'-0"	
x20(E)	32	#4	5'-11"	
x21(E)	12	#4	10'-6"	
REINFORCEMENT BARS, EPOXY COATED			POUND	2140
CONCRETE STRUCTURES			CU YD	10.1
EXPANSION BOLTS 3/4 INCH			EACH	18

GENERAL NOTES

REINFORCEMENT BARS DESIGNATED (E) SHALL BE EPOXY COATED.

SEE SHEET DP-16 FOR BOX CULVERT DETAILS.

*VERIFY DIMENSION WITH PRECAST BOX CULVERT FABRICATOR.

ALL DIMENSIONS ARE IN INCHES UNLESS OTHERWISE SHOWN.

DESIGNED	TB	REVISED	-
DRAWN	TB	REVISED	-
CHECKED	WPM	REVISED	-
DATE	12/14/2012	REVISED	-

STATE OF ILLINOIS
DEPARTMENT OF TRANSPORTATION

DRAINAGE DETAILS
CULVERT CONNECTION DETAIL STA. 3964 + 23.5

F.A.P. RTE.	SECTION	COUNTY	TOTAL SHEETS	SHEET NO.
338	(112 & 113) WRS-7	DUPAGE	1156	505
DD-06		CONTRACT NO. 60R30		
ILLINOIS FED. AID PROJECT				

SCALE: NONE SHEET NO. 1 OF 1 SHEETS STA. TO STA.