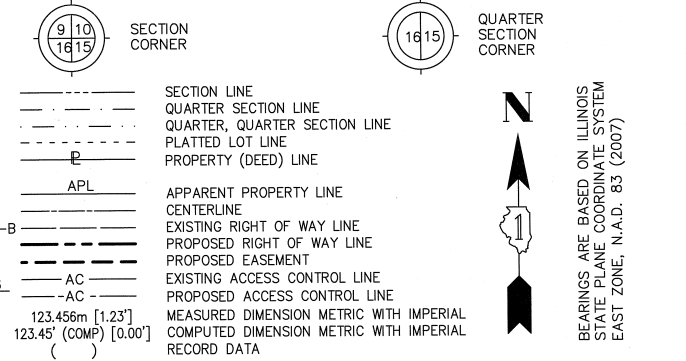


PART OF THE SE 1/4 SECTION 21 AND PART OF THE SW 1/4 SECTION 22, ALL IN T38N, R9E OF THE 3rd PM, NAPERVILLE TOWNSHIP, DUPAGE COUNTY, ILLINOIS.

LEGEND



BEARINGS ARE BASED ON ILLINOIS STATE PLANE COORDINATE SYSTEM EAST ZONE, N.A.D. 83 (2007)

- NOTES:
- ALL COORDINATES SHOWN HEREON ARE PROJECT. ALL DISTANCES SHOWN HEREON ARE GROUND.
  - BEARINGS SHOWN HEREON ARE BASED ON ILLINOIS STATE PLANE COORDINATE SYSTEM EAST ZONE, NAD 83, (2007).
  - THE COMBINATION FACTOR USED FOR THIS PROJECT = 0.99994777.
  - COORDINATE CONVERSION
- NAD83 (2007) STATE PLANE COORDINATES TO PROJECT COORDINATES:
- DIVIDE THE STATE PLANE NAD83 GRID COORDINATES BY THE COMBINATION FACTOR.
  - SUBTRACT 1,000,000.00 FROM THESE NORTHINGS AND EASTINGS.
- PROJECT COORDINATES TO NAD83 (2007) STATE PLANE COORDINATES:
- ADD 1,000,000.00 TO THE PROJECT NORTHINGS AND EASTINGS.
  - MULTIPLY THESE COORDINATES BY THE COMBINATION FACTOR.
- 5) THE NGS MONUMENT HELD FOR THIS PROJECT IS FIRST ORDER P.I.D. AA3730.

NAD83 (2007) S.P.	PROJECT (GROUND)
N. 1,869,327.5048	N. 869,425.1449
E. 1,023,602.1293	E. 23,655.5948

PROJECT COORDINATES ARE SHOWN COORDINATE TABLE ~ IL ROUTE 59

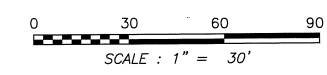
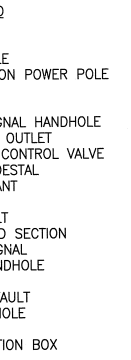
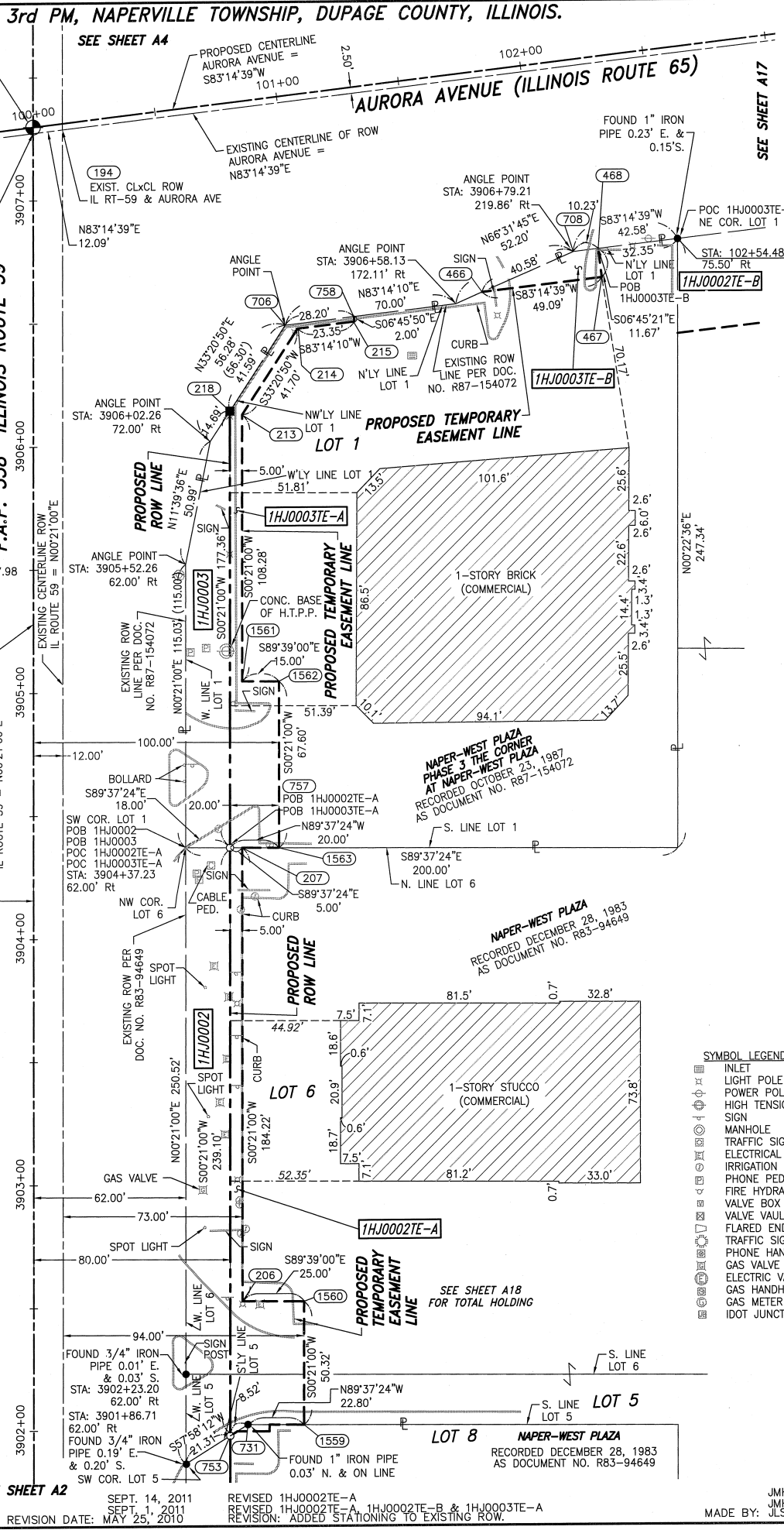
NO.	STATION	OFFSET	-NORTH--COORDINATES--EAST--
753	3901+98.12	80.00' RT.	N. 855,593.8780 E. 19,138.8411
1559	3902+02.68	110.00' RT.	N. 855,598.2487 E. 19,168.8683
731	3902+02.69	87.20' RT.	N. 855,598.3986 E. 19,146.0671
206	3902+53.00	85.00' RT.	N. 855,648.7228 E. 19,144.1762
1560	3902+53.00	110.00' RT.	N. 855,648.5701 E. 19,169.1758
787	3903+81.97	70.00' LT.	N. 855,778.6336 E. 18,989.9670
207	3904+37.22	85.00' RT.	N. 855,832.9410 E. 19,145.3017
757	3904+37.22	80.00' RT.	N. 855,832.9739 E. 19,140.3018
1563	3904+37.22	100.00' RT.	N. 855,832.8424 E. 19,160.3013
1561	3905+04.82	85.00' RT.	N. 855,900.5381 E. 19,145.7146
1562	3905+04.82	100.00' RT.	N. 855,900.4465 E. 19,160.7143
221	3905+20.00	70.00' LT.	N. 855,916.6647 E. 18,990.8103
222	3906+00.02	90.07' LT.	N. 855,996.8069 E. 18,971.2277
213	3906+13.10	85.00' RT.	N. 856,008.8166 E. 19,146.3761
218	3906+14.58	80.00' RT.	N. 856,010.3280 E. 19,141.3853
223	3906+23.42	187.30' LT.	N. 856,020.7954 E. 18,874.1475
214	3906+48.08	107.71' RT.	N. 856,043.6525 E. 19,169.3001
706	3906+49.46	102.65' RT.	N. 856,045.0670 E. 19,164.2454
215	3906+50.97	130.88' RT.	N. 856,046.4027 E. 19,192.4881
758	3906+52.95	130.63' RT.	N. 856,048.3888 E. 19,192.2525
183	3907+27.38	00.00' RT.	N. 856,123.6167 E. 19,062.0759
194	3907+28.88	12.00' RT.	N. 856,125.0393 E. 19,074.0848
192	3907+29.90	00.00' RT.	N. 856,126.1360 E. 19,062.0913

PROJECT COORDINATES ARE SHOWN COORDINATE TABLE ~ EAST NEW YORK ST./AURORA AVE.

NO.	STATION	OFFSET	-NORTH--COORDINATES--EAST--
223	98+00.97	82.50' RT.	N. 856,020.7954 E. 18,874.1475
222	98+94.55	117.74' RT.	N. 855,996.8069 E. 18,971.2277
183	99+99.69	2.50' RT.	N. 856,123.6167 E. 19,062.0759
192	100+00.00	00.00' RT.	N. 856,126.1360 E. 19,062.0913
194	100+11.78	2.50' RT.	N. 856,125.0393 E. 19,074.0848
706	100+91.91	92.52' RT.	N. 856,045.0670 E. 19,164.2454
214	100+96.76	94.52' RT.	N. 856,043.6525 E. 19,169.3001
215	101+20.11	94.52' RT.	N. 856,046.4027 E. 19,192.4881
758	101+20.11	92.52' RT.	N. 856,048.3888 E. 19,192.2525
466	101+73.04	89.17' RT.	N. 856,057.9413 E. 19,244.4209
708	102+11.90	77.50' RT.	N. 856,074.1018 E. 19,281.6395
467	102+22.13	89.17' RT.	N. 856,063.7160 E. 19,293.1692
468	102+22.13	77.50' RT.	N. 856,075.3050 E. 19,291.7963

PARCEL NUMBER	OWNER	TOTAL HOLDING ACRES	PART TAKEN ACRES	REMAINDER ACRES	PREV. DED. ACRES	EASEMENT ACRES	EASEMENT PURPOSE	PERMANENT TAX INDEX NUMBER	PROPERTY ACQUIRED BY
1HJ0002	INLAND REAL ESTATE LB I, LLC, A DELAWARE LIMITED LIABILITY COMPANY	15.051	0.101	14.950		0.056	CONSTRUCTION	07-22-303-004 07-22-303-010 07-22-303-011 07-22-303-012 07-22-101-005	
1HJ0003	HARRIS, N.A., AS SUCCESSOR TO HARRIS TRUST AND SAVINGS BANK AS TRUSTEE UNDER TRUST AGREEMENT DATED JANUARY 12, 2005 KNOWN AS TRUST NO. HTN-3141	1.001	0.064	0.937		0.050	CONSTRUCTION	07-22-101-007	
1HJ0003TE-A						0.008/346 S.F.	CONSTRUCTION		
1HJ0005	KOHL'S ILLINOIS, INC.	5.090	0.087	5.003				07-21-401-079	

F.A.P. 338 ILLINOIS ROUTE 59, SECTION FERRY ROAD TO AURORA AVENUE, JOB. NO. R-91-035-09.



RECEIVED  
NOV 14 2011  
PLATS & LEGALS  
Classten, White & Associates, P.C.  
121 AIRPORT DRIVE UNIT 1  
JOLIET, ILLINOIS 60431  
(815) 744-3720  
SHEET 1 IS A COVER SHEET AND NOT RECORDED.

**PLAT OF HIGHWAYS  
STATE OF ILLINOIS  
DEPARTMENT OF TRANSPORTATION  
F.A.P. 338 ILLINOIS ROUTE 59**

SECTION FERRY RD. TO AURORA AVE. DUPAGE COUNTY  
PROJECT JOB NO. R-91-035-09  
STATION 3901+98.12 TO STATION 3907+50  
SCALE: 1" = 30' SHEET A3 OF ???

**BUREAU OF LAND ACQUISITION  
201 WEST CENTER COURT  
SCHAUMBURG, ILLINOIS 60196-1096**

PRINTING DATE: NOVEMBER 14, 2011 ~ KAG Microstation/Sheet A3 R2.dgn

SEE SHEET A2

SEPT. 14, 2011  
REVISED 1HJ0002TE-A  
REVISION: ADDED STATIONING TO EXISTING ROW.

REVISION: ADDED STATIONING TO EXISTING ROW.

JMH  
JMH  
MADE BY: JLS