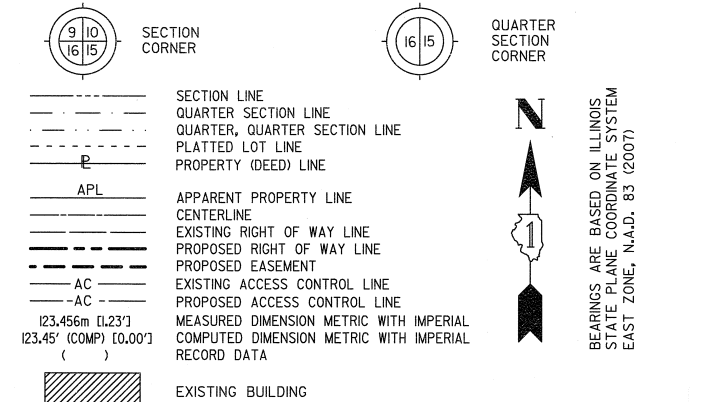
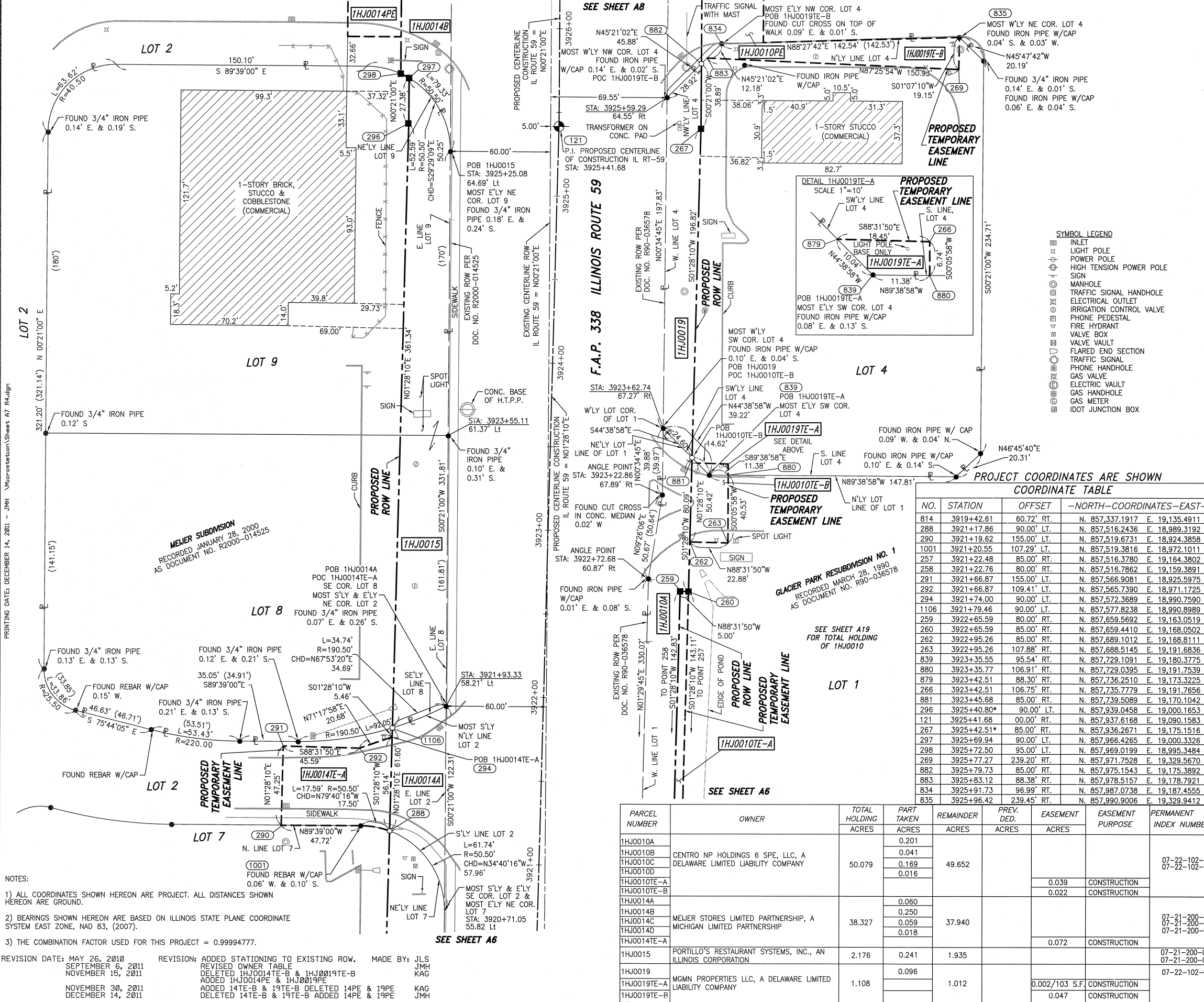


PART OF THE NE 1/4 SECTION 21 AND PART OF THE NW 1/4 SECTION 22, ALL IN T38N, R9E OF THE 3rd PM, NAPERVILLE TOWNSHIP, DUPAGE COUNTY, ILLINOIS.

LEGEND



BEARINGS ARE BASED ON ILLINOIS STATE PLANE COORDINATE SYSTEM EAST ZONE, N.A.D. 83 (2007)



- SYMBOL LEGEND
- INLET
  - LIGHT POLE
  - POWER POLE
  - HIGH TENSION POWER POLE
  - SIGN
  - MANHOLE
  - TRAFFIC SIGNAL HANDHOLE
  - ELECTRICAL OUTLET
  - IRRIGATION CONTROL VALVE
  - PHONE PEDESTAL
  - FIRE HYDRANT
  - VALVE BOX
  - FLARED VAULT
  - EXPOSED END SECTION
  - TRAFFIC SIGNAL
  - PHONE HANDHOLE
  - GAS VALVE
  - ELECTRIC VAULT
  - GAS HANDHOLE
  - GAS METER
  - IDOT JUNCTION BOX

- IRON PIPE OR ROD FOUND
- SET 5/8" x 30" REBAR
- + CUT CROSS FOUND OR SET
- PK FOUND PK NAIL
- PK SET PK NAIL
- T1 THESE STAKES REFERENCE FOUND OR SET MONUMENTATION
- T2 SET 5/8 INCH REBAR FLUSH WITH GROUND TO TIE FOUND IRON STAKE, IDENTIFIED BY COLORED PLASTIC CAP AND BEARING SURVEYORS PROFESSIONAL NUMBER.
- T3 BY COLORED PLASTIC CAP AND BEARING SURVEYORS PROFESSIONAL NUMBER.
- BT1 THESE STAKES, IN CULTIVATED AREAS, REFERENCE FOUND OR SET MONUMENTATION.
- BT2 BURIED 5/8 INCH REBAR 20 INCHES BELOW GROUND TO TIE FOUND IRON STAKE.
- BT3 IDENTIFIED BY COLORED PLASTIC CAP BEARING SURVEYORS PROFESSIONAL NUMBER.
- STAKING OF PROPOSED RIGHT OF WAY. SET DIVISION OF HIGHWAYS SURVEY MARKER TO MONUMENT THE POSITION SHOWN, IDENTIFIED BY INSCRIPTION DATA AND SURVEYORS PROFESSIONAL NUMBER.
- M STAKING OF PROPOSED RIGHT OF WAY IN CULTIVATED AREAS. BURIED 5/8 INCH REBAR 20 INCHES BELOW GROUND TO MARK FUTURE SURVEY MARKER POSITION, IDENTIFIED BY COLORED PLASTIC CAP BEARING SURVEYORS PROFESSIONAL NUMBER.
- PERMANENT SURVEY MARKER, IDOT STD. 2135 (TO BE SET BY OTHERS)
- RIGHT OF WAY STAKING PROPOSED TO BE SET.

PROJECT COORDINATES ARE SHOWN  
COORDINATE TABLE

NO.	STATION	OFFSET	NORTH	EAST
814	3919+42.61	60.72' RT.	N. 857,337.1917	E. 19,135.4911
288	3921+17.86	90.00' LT.	N. 857,516.2436	E. 18,989.3192
290	3921+19.62	155.00' LT.	N. 857,519.6731	E. 18,924.3858
1001	3921+20.55	107.29' LT.	N. 857,519.3816	E. 18,972.1011
257	3921+22.48	85.00' RT.	N. 857,516.3780	E. 19,164.3802
258	3921+22.76	80.00' RT.	N. 857,516.7862	E. 19,159.3891
291	3921+66.87	155.00' LT.	N. 857,566.9081	E. 18,925.5975
292	3921+66.87	109.41' LT.	N. 857,565.7390	E. 18,971.1725
294	3921+74.00	90.00' LT.	N. 857,572.3689	E. 18,990.7590
1106	3921+79.46	90.00' LT.	N. 857,577.8238	E. 18,990.8989
259	3922+65.59	80.00' RT.	N. 857,659.5692	E. 19,163.0519
260	3922+65.59	85.00' RT.	N. 857,659.4410	E. 19,168.0502
262	3922+95.26	85.00' RT.	N. 857,689.1012	E. 19,168.8111
263	3922+95.26	107.88' RT.	N. 857,688.5145	E. 19,191.6836
839	3923+35.55	95.54' RT.	N. 857,729.1091	E. 19,180.3735
880	3923+35.77	106.91' RT.	N. 857,729.0395	E. 19,191.7539
879	3923+42.51	88.30' RT.	N. 857,736.2510	E. 19,173.3225
266	3923+42.51	106.75' RT.	N. 857,735.7779	E. 19,191.7656
881	3923+45.68	85.00' RT.	N. 857,739.5089	E. 19,170.1042
296	3925+40.80*	90.00' LT.	N. 857,939.0458	E. 19,000.1653
121	3925+41.68	00.00' RT.	N. 857,937.6168	E. 19,090.1583
267	3925+42.51*	85.00' RT.	N. 857,936.2671	E. 19,175.1516
297	3925+69.94	90.00' LT.	N. 857,966.4265	E. 19,000.3326
298	3925+72.50	95.00' LT.	N. 857,969.0199	E. 18,995.3484
269	3925+77.27	239.20' RT.	N. 857,971.7528	E. 19,329.5670
882	3925+79.73	85.00' RT.	N. 857,975.1543	E. 19,175.3892
883	3925+83.12	88.38' RT.	N. 857,978.5157	E. 19,178.7921
834	3925+91.73	96.99' RT.	N. 857,987.0738	E. 19,187.4555
835	3925+96.42	239.45' RT.	N. 857,990.9006	E. 19,329.9412

- NOTES:
- ALL COORDINATES SHOWN HEREON ARE PROJECT. ALL DISTANCES SHOWN HEREON ARE GROUND.
  - BEARINGS SHOWN HEREON ARE BASED ON ILLINOIS STATE PLANE COORDINATE SYSTEM EAST ZONE, NAD 83, (2007).
  - THE COMBINATION FACTOR USED FOR THIS PROJECT = 0.99994777.

REVISION DATE: MAY 26, 2010 REVISION: ADDED STATIONING TO EXISTING ROW. MADE BY: JLS  
 SEPTEMBER 6, 2011 REVISION: REVISED OWNER TABLE. MADE BY: JMH  
 NOVEMBER 15, 2011 REVISION: DELETED 1HJ0014TE-B & 1HJ0019TE-B. MADE BY: KAG  
 NOVEMBER 30, 2011 REVISION: ADDED 1HJ0014PE & 1HJ0019PE. MADE BY: KAG  
 DECEMBER 14, 2011 REVISION: ADDED 14TE-B & 19TE-B DELETED 14PE & 19PE. MADE BY: JMH  
 DELETED 14TE-B & 19TE-B ADDED 14PE & 19PE

PARCEL NUMBER	OWNER	TOTAL HOLDING ACRES	PART TAKEN ACRES	REMAINDER ACRES	PREV. DED. ACRES	EASEMENT ACRES	EASEMENT PURPOSE	PERMANENT TAX INDEX NUMBER	PROPERTY ACQUIRED BY
1HJ0010A			0.201						
1HJ0010B			0.041						
1HJ0010C	CENTRO NP HOLDINGS 6 SPE, LLC, A DELAWARE LIMITED LIABILITY COMPANY	50.079	0.169	49.652				07-22-102-009 07-22-102-010	
1HJ0010D			0.016						
1HJ0010TE-A						0.039	CONSTRUCTION		
1HJ0010TE-B						0.022	CONSTRUCTION		
1HJ0014A			0.060						
1HJ0014B			0.250						
1HJ0014C	MEJER STORES LIMITED PARTNERSHIP, A MICHIGAN LIMITED PARTNERSHIP	38.327	0.059	37.940				07-21-200-040 07-21-200-052 07-21-200-053	
1HJ0014TE-A			0.018			0.072	CONSTRUCTION		
1HJ0015	PORTELLO'S RESTAURANT SYSTEMS, INC., AN ILLINOIS CORPORATION	2.176	0.241	1.935				07-21-200-042 07-21-200-043	
1HJ0019			0.096					07-22-102-005	
1HJ0019TE-A	MGMN PROPERTIES LLC, A DELAWARE LIMITED LIABILITY COMPANY	1.108		1.012		0.002/103 S.F.	CONSTRUCTION		
1HJ0019TE-B						0.047	CONSTRUCTION		

RECEIVED  
 DEC 14 2011  
 PLATS & LEGALS

Classten, White & Associates, P.C.  
 121 AIRPORT DRIVE, UNIT 1  
 JOLIET, ILLINOIS 60431  
 (815) 744-3720

PLAT OF HIGHWAYS  
 STATE OF ILLINOIS  
 DEPARTMENT OF TRANSPORTATION  
 F.A.P. 338 ILLINOIS ROUTE 59

SECTION FERRY RD. TO AURORA AVE. DUPAGE COUNTY  
 PROJECT JOB NO. R-91-035-09  
 STATION 3920+50 TO STATION 3926+00  
 SCALE: 1" = 30' SHEET 17 OF ???

BUREAU OF LAND ACQUISITION  
 201 WEST CENTER COURT  
 SCHAUMBURG, ILLINOIS 60196-1096

F.A.P. 338 ILLINOIS ROUTE 59, SECTION FERRY ROAD TO AURORA AVENUE, JOB. NO. R-91-035-09.