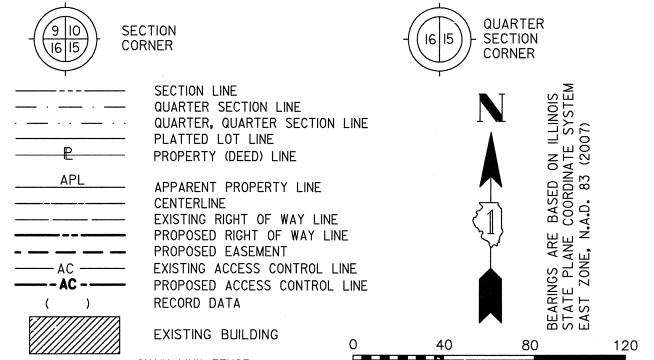


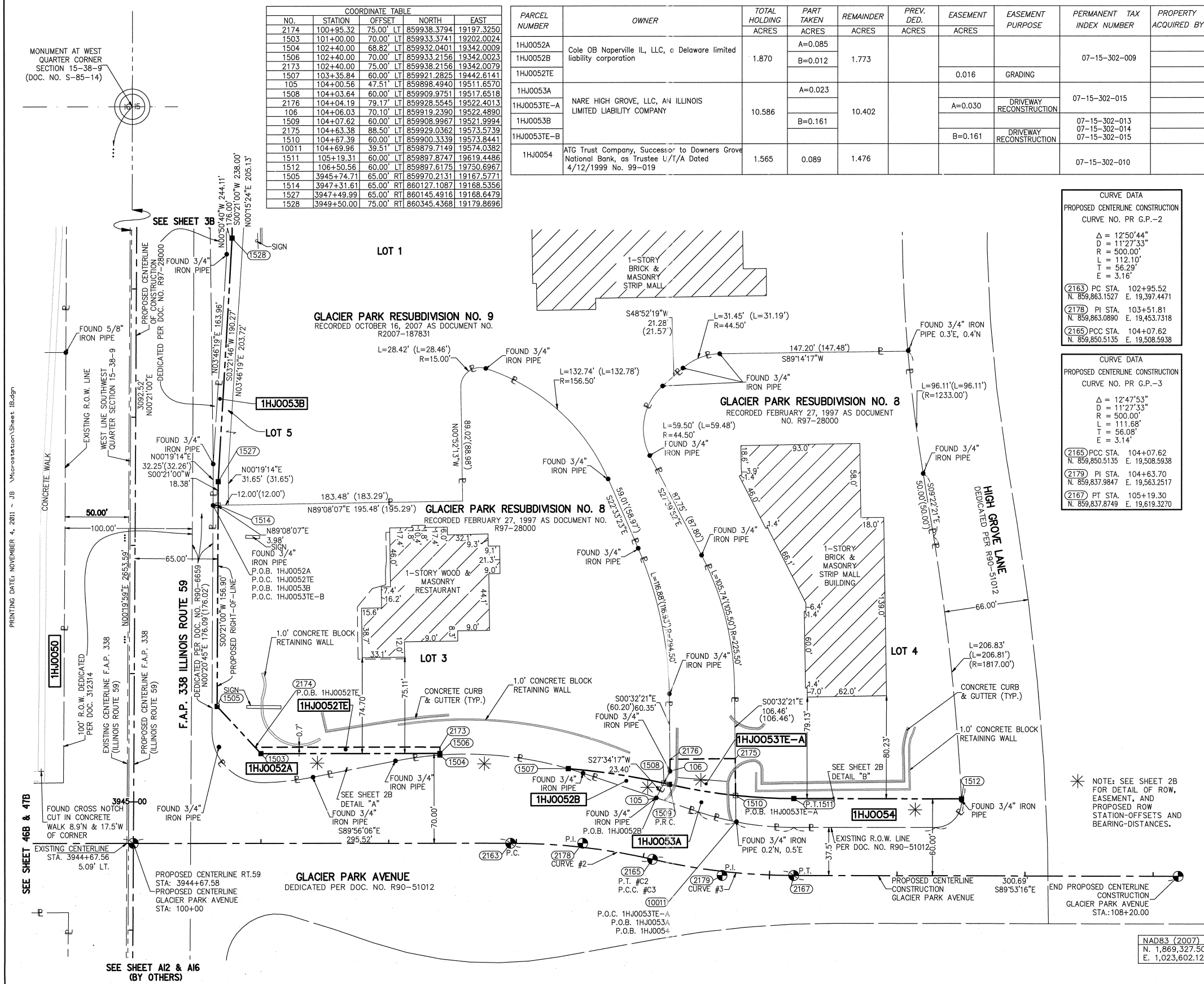
PART OF THE SW 1/4 SECTION 15, T38N, R9E OF THE 3rd PM, NAPERVILLE TOWNSHIP, DUPAGE COUNTY, ILLINOIS.

LEGEND



COORDINATE TABLE			
NO.	STATION	OFFSET	NORTH EAST
2174	100+95.32	75.00' LT	859938.3794 19197.3250
1503	101+00.00	70.00' LT	859933.3741 19202.0024
1504	102+40.00	68.82' LT	859932.0401 19342.0009
1506	102+40.00	70.00' LT	859933.2156 19342.0023
2173	102+40.00	75.00' LT	859938.2156 19342.0079
1507	103+35.84	60.00' LT	859921.2825 19442.6141
105	104+00.56	47.51' LT	859898.4940 19511.6570
1508	104+03.64	60.00' LT	859909.9751 19517.6518
2176	104+04.19	79.17' LT	859928.5545 19522.4013
106	104+06.03	70.10' LT	859919.2390 19522.4890
1509	104+07.62	60.00' LT	859908.9967 19521.9994
2175	104+63.38	88.50' LT	859929.0362 19573.5739
1510	104+67.39	60.00' LT	859900.3339 19573.8441
10011	104+69.96	39.51' LT	859879.7149 19574.0382
1511	105+19.31	60.00' LT	859897.8747 19619.4486
1512	106+50.56	60.00' LT	859897.6175 19750.6967
1505	3945+74.71	65.00' RT	859970.2131 19167.5771
1514	3947+31.61	65.00' RT	860127.1087 19168.5356
1527	3947+49.99	65.00' RT	860145.4916 19168.6479
1528	3949+50.00	75.00' RT	860345.4368 19179.8696

PARCEL NUMBER	OWNER	TOTAL HOLDING ACRES	PART TAKEN ACRES	REMAINDER ACRES	PREV. DED. ACRES	EASEMENT ACRES	EASEMENT PURPOSE	PERMANENT TAX INDEX NUMBER	PROPERTY ACQUIRED BY
1HJ0052A	Cole OB Naperville IL, LLC, a Delaware limited liability corporation	1.870	A=0.085	1.773				07-15-302-009	
1HJ0052B			B=0.012						
1HJ0052TE									
1HJ0053A	NARE HIGH GROVE, LLC, AN ILLINOIS LIMITED LIABILITY COMPANY	10.586	A=0.023	10.402				07-15-302-015	
1HJ0053TE-A									
1HJ0053B			B=0.161						
1HJ0053TE-B						B=0.161	DRIVEWAY RECONSTRUCTION	07-15-302-013 07-15-302-014 07-15-302-015	
1HJ0054	ATG Trust Company, Successor to Downers Grove National Bank, as Trustee U/T/A Dated 4/12/1999 No. 99-019	1.565	0.089	1.476				07-15-302-010	



CURVE DATA
PROPOSED CENTERLINE CONSTRUCTION
CURVE NO. PR G.P.-2

Δ = 12°50'44"
D = 11'27'33"
R = 500.00'
L = 112.10'
T = 56.29'
E = 3.16'

(2163) PC STA. 102+95.52
N. 859,863.1527 E. 19,397.4471

(2178) PI STA. 103+51.81
N. 859,863.0890 E. 19,453.7318

(2165) PCC STA. 104+07.62
N. 859,850.5135 E. 19,508.5938

CURVE DATA
PROPOSED CENTERLINE CONSTRUCTION
CURVE NO. PR G.P.-3

Δ = 12°47'53"
D = 11'27'33"
R = 500.00'
L = 111.68'
T = 56.08'
E = 3.14'

(2165) PCC STA. 104+07.62
N. 859,850.5135 E. 19,508.5938

(2179) PI STA. 104+63.70
N. 859,837.9847 E. 19,563.2517

(2167) PT STA. 105+19.30
N. 859,837.8749 E. 19,619.3270

- STATE OF ILLINOIS) SS
- COUNTY OF DUPAGE)
- THIS IS TO CERTIFY THAT WE, MIDWEST TECHNICAL CONSULTANTS, INC., AN ILLINOIS PROFESSIONAL DESIGN FIRM NUMBER 184-002917, HAVE SURVEYED THE PLAT OF HIGHWAYS SHOWN HEREON BETWEEN SECTION 15, TOWNSHIP 38 NORTH, RANGE 9 EAST, AND SECTION 16, TOWNSHIP 38 NORTH, RANGE 9 EAST OF THE THIRD PRINCIPAL MERIDIAN, DUPAGE COUNTY, THAT THE SURVEY IS TRUE AND COMPLETE AS SHOWN TO THE BEST OF MY KNOWLEDGE AND BELIEF, THAT THE PLAT CORRECTLY REPRESENTS SAID SURVEY, THAT ALL MONUMENTS FOUND AND ESTABLISHED ARE OF PERMANENT QUALITY AND OCCUPY THE POSITIONS SHOWN THEREON AND THAT THE MONUMENTS ARE SUFFICIENT TO ENABLE THE SURVEY TO BE RETRACED. THIS SURVEY CONFORMS TO THE CURRENT ILLINOIS MINIMUM STANDARDS FOR A BOUNDARY SURVEY. MADE FOR THE DEPARTMENT OF TRANSPORTATION, STATE OF ILLINOIS.
- DATED AT NAPERVILLE, ILLINOIS THIS ____ DAY OF _____, 2011 A.D.
- RUSSELL W. OLSEN
ILLINOIS PROFESSIONAL LAND SURVEYOR NO. 035-002718
LICENSE EXPIRES NOVEMBER 30, 2012
THIS PROFESSIONAL SERVICE CONFORMS TO THE CURRENT ILLINOIS MINIMUM STANDARDS FOR A BOUNDARY SURVEY.
- Midwest Technical Consultants, Inc.
1805 N. MILL STREET, SUITE L
Naperville, ILLINOIS 60563
(630)505-0101
- NOTES:
1) ALL COORDINATES SHOWN HEREON ARE PROJECT. ALL DISTANCES SHOWN HEREON ARE GRID.
2) BEARINGS SHOWN HEREON ARE BASED ON ILLINOIS STATE PLANE COORDINATE SYSTEM EAST ZONE, NAD 83, (2007).
3) THE COMBINATION FACTOR USED FOR THIS PROJECT = 0.99994777.
4) COORDINATE CONVERSION
NAD83 (2007) STATE PLANE COORDINATES TO PROJECT COORDINATES:
A) DIVIDE THE STATE PLANE NAD83 GRID COORDINATES BY THE COMBINATION FACTOR.
B) SUBTRACT 1,000,000.00 FROM THESE NORTHINGS AND EASTINGS.
PROJECT COORDINATES TO NAD83 (2007) STATE PLANE COORDINATES:
A) ADD 1,000,000.00 TO THE PROJECT NORTHINGS AND EASTINGS.
B) MULTIPLY THESE COORDINATES BY THE COMBINATION FACTOR.
5) THE NGS MONUMENT HELD FOR THIS PROJECT IS IS FIRST ORDER P.I.D. AA3730.

NAD83 (2007) S.P. PROJECT (GROUND)	
N. 1,869,327.5048	N. 869,425.1449
E. 1,023,602.1293	E. 23,655.5948

PLAT OF HIGHWAYS
STATE OF ILLINOIS
DEPARTMENT OF TRANSPORTATION
F.A.P. 338 ILLINOIS ROUTE 59

SECTION: FERRY RD. TO AURORA AVE. DUPAGE COUNTY
PROJECT: ROUTE 59 JOB NO. R-91-035-09
STATION 3944+67.58 TO STATION 3949+50
STATION 100+00 TO STATION 108+20
SCALE: 1" = 40' SHEET 1B OF 47

BUREAU OF LAND ACQUISITION
201 WEST CENTER COURT
SCHAMBURG, ILLINOIS 60196-1096

PRINTING DATE: NOVEMBER 4, 2011 - JB \Microstation\Sheet_1B.dgn

JOB #R-91-035-09

RECEIVED
NOV 04 2011
PLATS & LEGALS