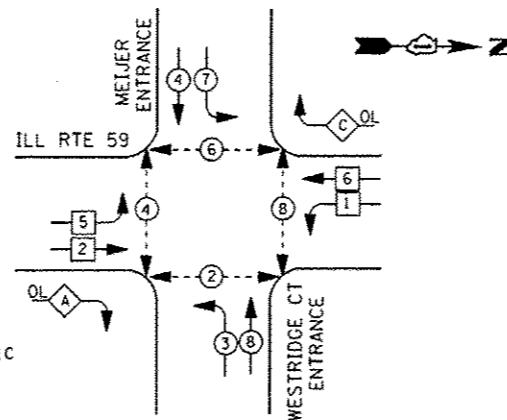


SCHEDULE OF QUANTITIES

QUANTITY	UNIT	ITEM
30	SO FT	SIGN PANEL - TYPE 1
1	EACH	SERVICE INSTALLATION - GROUND MOUNTED
785	FOOT	UNDERGROUND CONDUIT, GALVANIZED STEEL, 2" DIA.
23	FOOT	UNDERGROUND CONDUIT, GALVANIZED STEEL, 2 1/2" DIA.
64	FOOT	UNDERGROUND CONDUIT, GALVANIZED STEEL, 3" DIA.
639	FOOT	UNDERGROUND CONDUIT, GALVANIZED STEEL, 4" DIA.
5	EACH	HANDHOLE
4	EACH	HEAVY-DUTY HANDHOLE
2	EACH	DOUBLE HANDHOLE
1	EACH	TRANSCEIVER - FIBER OPTIC
1681	FOOT	ELECTRIC CABLE IN CONDUIT, SIGNAL NO. 14 2C
2539	FOOT	ELECTRIC CABLE IN CONDUIT, SIGNAL NO. 14 3C
2981	FOOT	ELECTRIC CABLE IN CONDUIT, SIGNAL NO. 14 5C
1925	FOOT	ELECTRIC CABLE IN CONDUIT, SIGNAL NO. 14 7C
2235	FOOT	ELECTRIC CABLE IN CONDUIT, LEAD-IN, NO. 14 1 PAIR
44	FOOT	ELECTRIC CABLE IN CONDUIT, SERVICE, NO. 6 2 C
851	FOOT	ELECTRIC CABLE IN CONDUIT, EQUIPMENT GROUNDING CONDUCTOR, NO. 6 1C
2	EACH	TRAFFIC SIGNAL POST, GALVANIZED STEEL 16 FT.
1	EACH	STEEL COMBINATION MAST ARM ASSEMBLY AND POLE 50 FT.
1	EACH	STEEL COMBINATION MAST ARM ASSEMBLY AND POLE 60 FT.
1	EACH	STEEL COMBINATION MAST ARM ASSEMBLY AND POLE WITH DUAL MAST ARMS, 52 FT. AND 16 FT.
20	FOOT	CONCRETE FOUNDATION, TYPE A
4	FOOT	CONCRETE FOUNDATION, TYPE C
47	FOOT	CONCRETE FOUNDATION, TYPE E 36-INCH DIAMETER
21	FOOT	CONCRETE FOUNDATION, TYPE E 42-INCH DIAMETER
10	EACH	SIGNAL HEAD, LED, 1-FACE, 3-SECTION, MAST-ARM MOUNTED
1	EACH	SIGNAL HEAD, LED, 1-FACE, 3-SECTION, BRACKET MOUNTED
1	EACH	SIGNAL HEAD, LED, 1-FACE, 5-SECTION, BRACKET MOUNTED
6	EACH	SIGNAL HEAD, LED, 1-FACE, 5-SECTION, MAST-ARM MOUNTED
1	EACH	SIGNAL HEAD, LED, 2-FACE, 1-3 SECTION, 1-5 SECTION, BRACKET MOUNTED
4	EACH	PEDESTRIAN SIGNAL HEAD, LED, 1-FACE, BRACKET MOUNTED WITH COUNTDOWN TIMER
2	EACH	PEDESTRIAN SIGNAL HEAD, LED, 2-FACE, BRACKET MOUNTED WITH COUNTDOWN TIMER
16	EACH	TRAFFIC SIGNAL BACKPLATE, LOUVERED, ALUMINUM
9	EACH	INDUCTIVE LOOP DETECTOR
1094	FOOT	PREFORMED DETECTOR LOOP
* 3	EACH	LIGHT DETECTOR
* 1	EACH	LIGHT DETECTOR AMPLIFIER
8	EACH	PEDESTRIAN PUSH-BUTTON
1	EACH	TEMPORARY TRAFFIC SIGNAL INSTALLATION
1	EACH	REMOVE EXISTING TRAFFIC SIGNAL EQUIPMENT
11	EACH	REMOVE EXISTING HANDHOLE
9	EACH	REMOVE EXISTING CONCRETE FOUNDATION
1	EACH	TEMPORARY TRAFFIC SIGNAL TIMING
820	FOOT	EMERGENCY VEHICLE PRIORITY SYSTEM LINE SENSOR CABLE, NO. 20 3/C
1	EACH	UNINTERRUPTIBLE POWER SUPPLY, SPECIAL
1	EACH	FULL-ACTUATED CONTROLLER AND SUPER P CABINET, TYPE IV, SPECIAL
1	EACH	STEEL COMBINATION MAST ARM ASSEMBLY AND POLE WITH DUAL MAST ARMS, 28 FT. AND 50 FT.
** 2	EACH	ILLUMINATED STREET NAME SIGN
2	EACH	PEDESTRIAN PUSHBUTTON POST, TYPE A

* 100% COST TO THE CITY OF NAPERVILLE
** 50% COST TO THE CITY OF NAPERVILLE
50% COST TO THE CITY OF AURORA

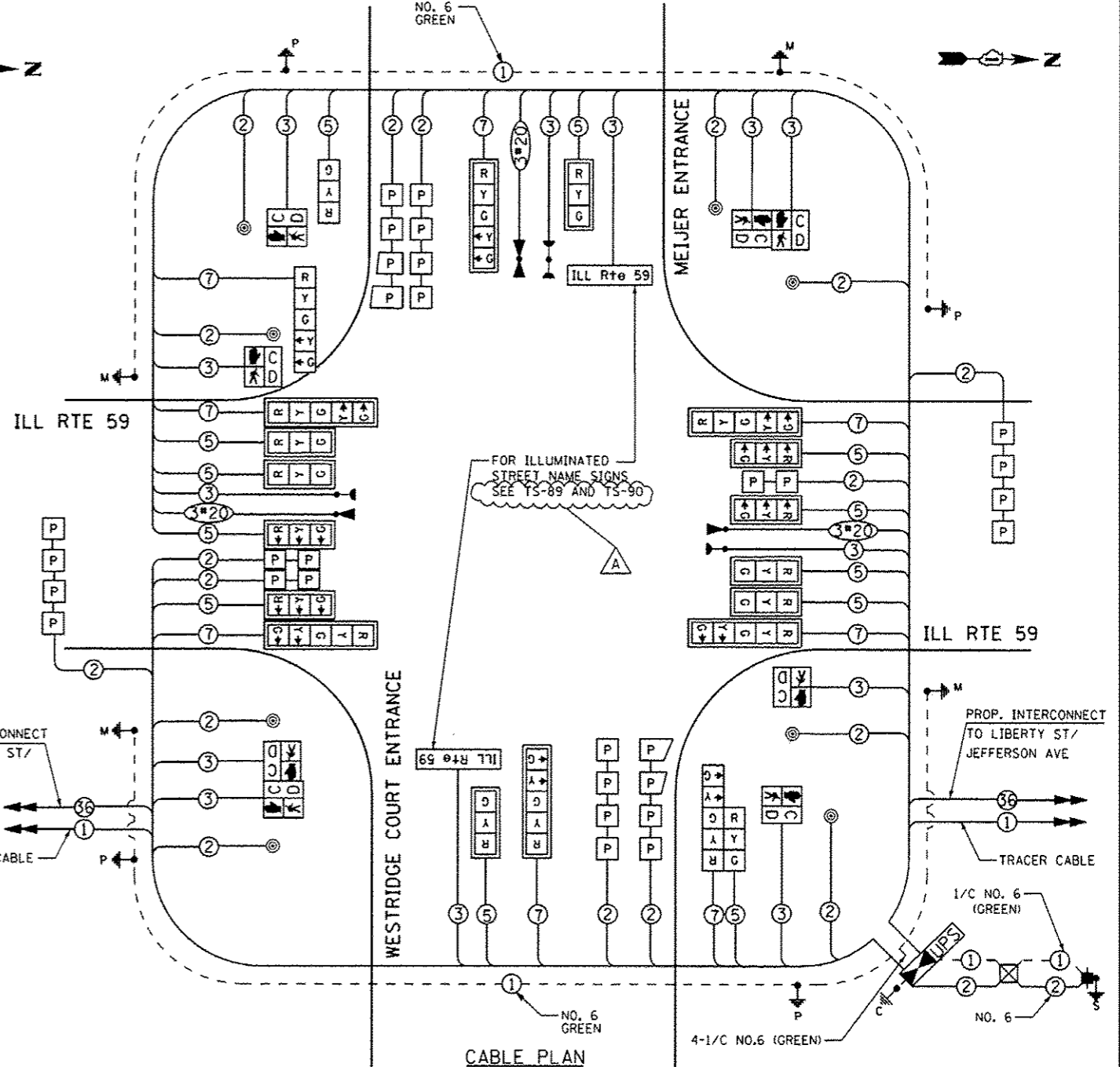
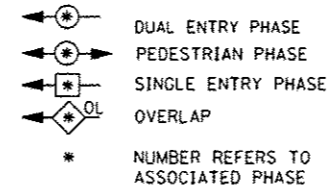
CONTROLLER SEQUENCE



PHASE DESIGNATION DIAGRAM

OVERLAP LETTER	OVERLAP PHASE	PERMISSIVE PHASE	PROTECTED PHASE
A	= 2	+ 3	
C	= 6	+ 7	

LEGEND



PROP. INTERCONNECT TO NEW YORK ST/ AURORA AVE

FOR ILLUMINATED STREET NAME SIGNS SEE TS-89 AND TS-90

PROP. INTERCONNECT TO LIBERTY ST/ JEFFERSON AVE

EMERGENCY VEHICLE PREEMPTORS			
EMERGENCY VEHICLE PREEMPTOR	3	4	5
MOVEMENT	→	←	↑

THE TRAFFIC SIGNAL CONTROL EQUIPMENT FOR THIS PROJECT SHALL BE "ECONOLITE" TO MATCH THE EXISTING ADJACENT SYSTEM

THE END OF THE TRACER CABLE SHALL BE CONTINUOUS AND EXTEND INTO THE CONTROLLER CABINET.

RESTORATION OF WORK AREA, RESTORATION OF THE TRAFFIC SIGNAL WORK AREA SHALL BE INCLUDED IN THE RELATED PAY ITEM SUCH AS FOUNDATION, CONDUIT, HANDHOLE, TRENCH AND BACKFILL, ETC., AND NO EXTRA COMPENSATION SHALL BE ALLOWED. ALL ROADWAY SURFACES SUCH AS SHOULDERS, MEDIAN, SIDEWALKS, PAVEMENT ETC. SHALL BE REPLACED IN KIND. ALL DAMAGE TO MOWED LAWNS SHALL BE REPLACED WITH AN APPROVED SOD, AND ALL DAMAGE TO UNMOWED FIELDS SHALL BE SEEDED IN ACCORDANCE WITH STANDARD SPECIFICATIONS 252 AND 250 RESPECTIVELY.

FOR COMBINATION POLE LIGHTING AND WIRING SEE ROADWAY LIGHTING PLANS SHEET 2 OF 15, TS-94 AND TS-96.

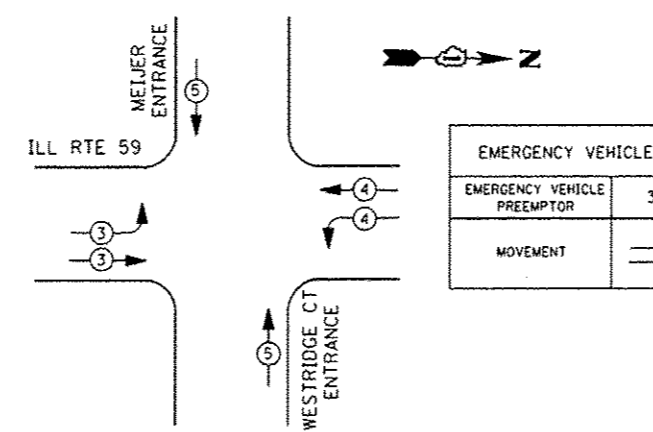
ALL LOOPS WITHIN LIMITS OF PCC ROADWAY RECONSTRUCTION SHALL BE PREFORMED TYPE

I. D. O. T. TRAFFIC SIGNAL INSTALLATION ELECTRICAL SERVICE REQUIREMENTS

TYPE	NO. LAMPS	WATTAGE		% OPERATIONS	TOTAL WATTAGE
		INCAND.	LED		
SIGNAL (RED)	20	135	17	0.50	170
(YELLOW)	20	135	25	0.25	125
(GREEN)	20	135	15	0.25	75
ARROW	16	135	12	0.10	19
PED. SIGNAL	8	90	25	1.00	200
CONTROLLER	1	100	100	1.00	100
ILLUM. SIGN	2		90	0.50	90
TOTAL =					779

ENERGY COSTS - BILLED TO: CITY OF NAPERVILLE
400 S. EAGLE STREET
NAPERVILLE, IL 60540

ENERGY SUPPLY - CONTACT BRIAN CHAMBERLAIN
PHONE NAPERVILLE ELECTRIC DEPT.
630-420-6653



EMERGENCY VEHICLE PREEMPTION SEQUENCE