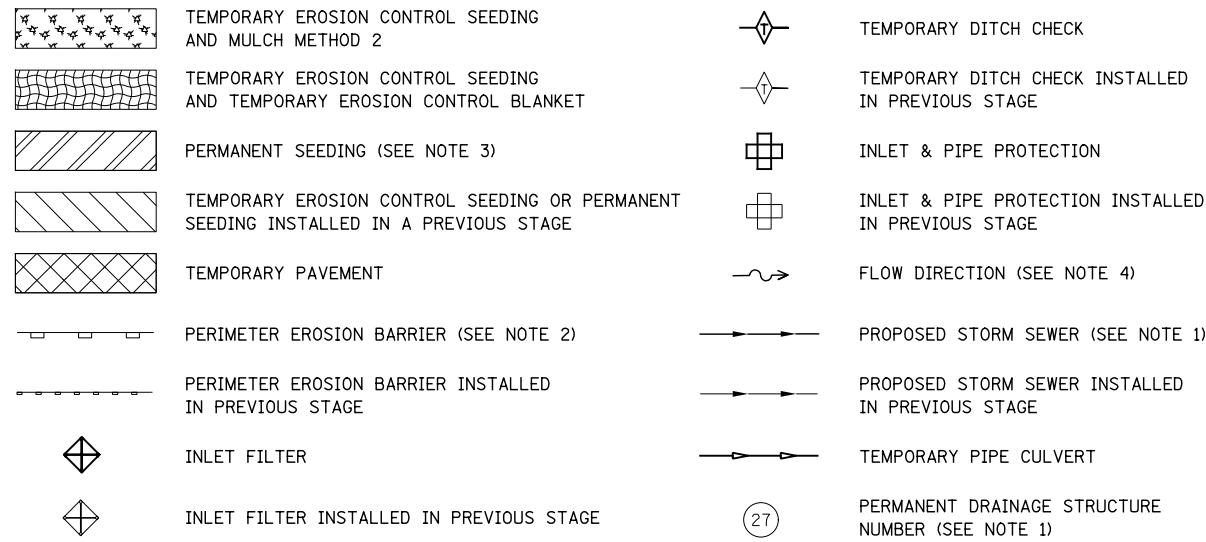


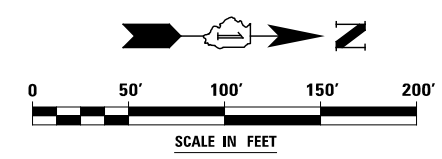
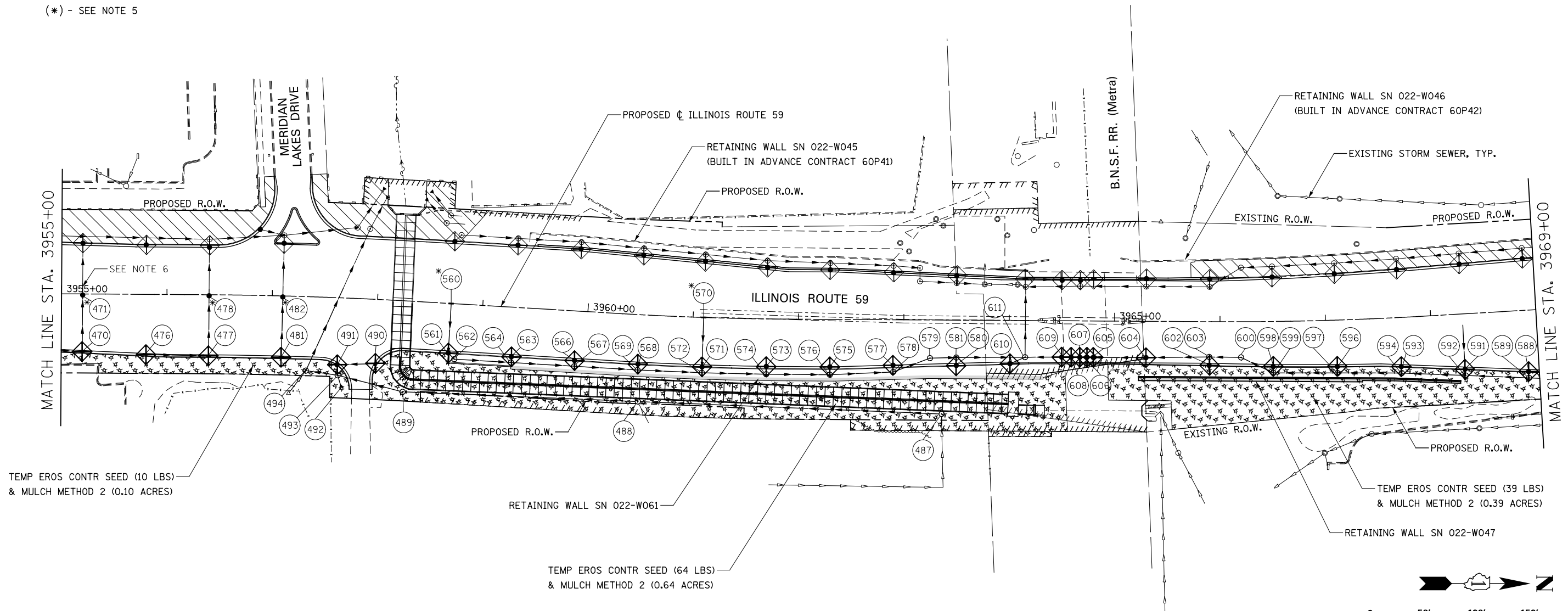
EROSION CONTROL LEGEND



(*) - SEE NOTE 5

NOTES

1. SEE PROPOSED DRAINAGE PLANS FOR STORM SEWER INFORMATION.
2. PERIMETER EROSION BARRIER SHALL BE ERECTED ADJACENT TO R.O.W., EASEMENT, AND CONSTRUCTION LIMITS AND AS DIRECTED BY THE ENGINEER.
3. SEE LANDSCAPING PLANS FOR LANDSCAPING REQUIREMENTS.
4. SEE STAGE 2 CROSS SECTIONS FOR GRADING INFORMATION.
5. PROPOSED STRUCTURE SHALL BE BURIED AND TEMPORARILY COVERED/CLOSED WITH STEEL PLATE OF THICKNESS SPECIFIED AND APPROVED BY THE ENGINEER. PAYMENT FOR THIS TEMPORARY COVER INSTALLATION AND REMOVAL SHALL BE CONSIDERED INCLUDED IN THE COST OF THE PROPOSED STRUCTURE.
6. STORM SEWERES TO BE FULLY CONSTRUCTED ACROSS ENTIRE ROADWAY, USING A SINGLE LANE NIGHT TIME CLOSURE.



DESIGNED <i>PJO</i>	REVISED -	STATE OF ILLINOIS DEPARTMENT OF TRANSPORTATION	EROSION CONTROL - STAGE 2, 2A AND 2B ILLINOIS ROUTE 59		F.A.P. RTE.	SECTION	COUNTY	TOTAL SHEETS	SHEET NO.	
DRAWN <i>KES</i>	REVISED -		SCALE: AS SHOWN	SHEET NO. 33 OF 70 SHEETS	338	(112 & 113) WRS-7	DUPAGE	1156	723	
CHECKED <i>JCM</i>	REVISED -		STA. 3955+00 TO STA. 3969+00	CONTRACT NO. 60R30		ILLINOIS FED. AID PROJECT				
DATE <i>12/14/2012</i>	REVISED -									