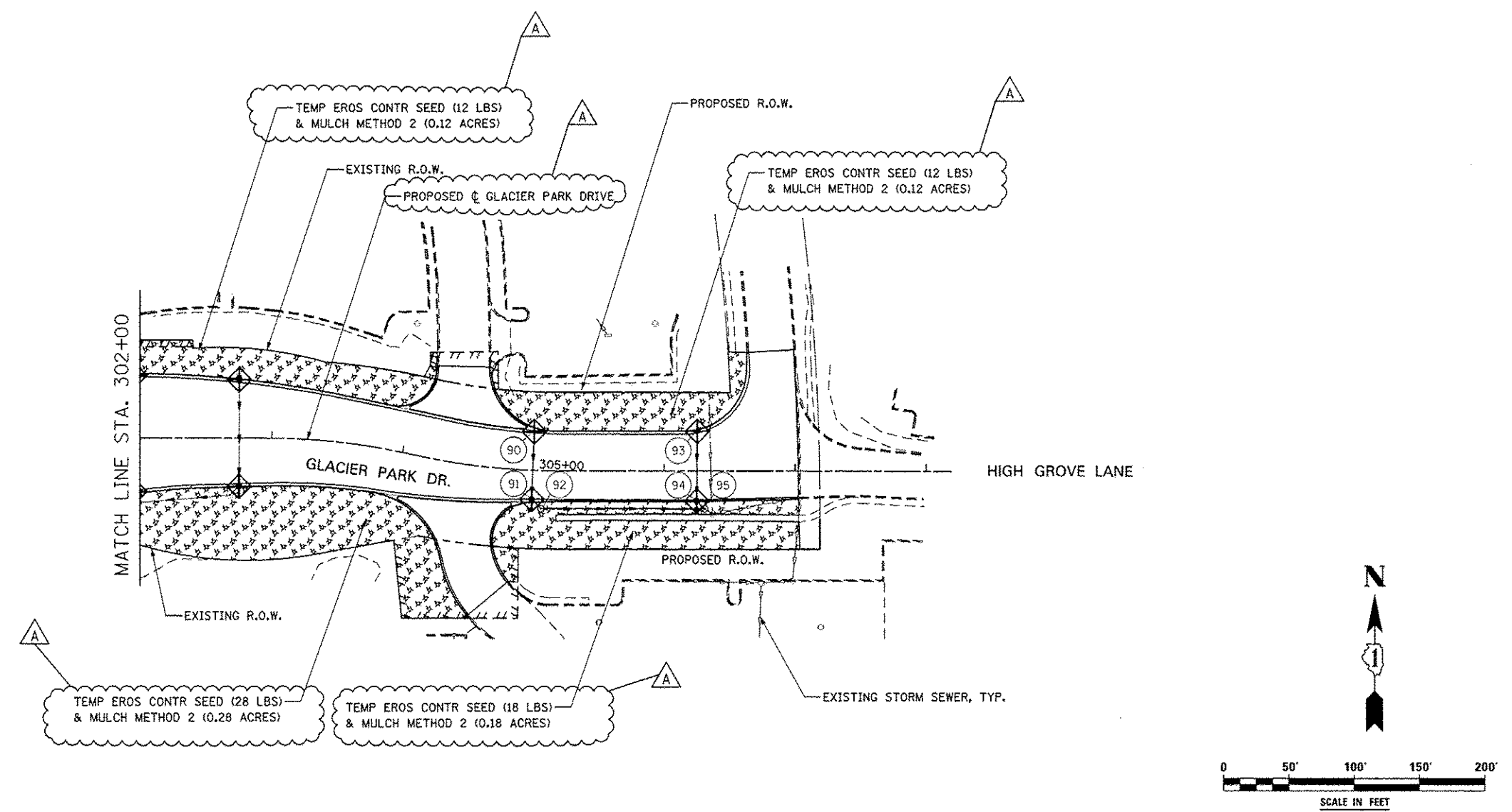


**EROSION CONTROL LEGEND**

- |  |  |  |   |
|--|--|--|---|
|  | TEMPORARY EROSION CONTROL SEEDING AND MULCH METHOD 2                                 |  | TEMPORARY DITCH CHECK                               |
|  | TEMPORARY EROSION CONTROL SEEDING AND TEMPORARY EROSION CONTROL BLANKET              |  | TEMPORARY DITCH CHECK INSTALLED IN PREVIOUS STAGE   |
|  | PERMANENT SEEDING (SEE NOTE 3)   |  | INLET & PIPE PROTECTION                             |
|  | TEMPORARY EROSION CONTROL SEEDING OR PERMANENT SEEDING INSTALLED IN A PREVIOUS STAGE |  | INLET & PIPE PROTECTION INSTALLED IN PREVIOUS STAGE |
|  | TEMPORARY PAVEMENT   |  | FLOW DIRECTION (SEE NOTE 4)                         |
|  | PERIMETER EROSION BARRIER (SEE NOTE 2)   |  | PROPOSED STORM SEWER (SEE NOTE 1)                   |
|  | PERIMETER EROSION BARRIER INSTALLED IN PREVIOUS STAGE                                |  | PROPOSED STORM SEWER INSTALLED IN PREVIOUS STAGE    |
|  | INLET FILTER   |  | TEMPORARY PIPE CULVERT                              |
|  | INLET FILTER INSTALLED IN PREVIOUS STAGE   |  | PERMANENT DRAINAGE STRUCTURE NUMBER (SEE NOTE 1)    |

**NOTES**

1. SEE PROPOSED DRAINAGE PLANS FOR STORM SEWER INFORMATION.
2. PERIMETER EROSION BARRIER SHALL BE ERECTED ADJACENT TO R.O.W., EASEMENT, AND CONSTRUCTION LIMITS AND AS DIRECTED BY THE ENGINEER.
3. SEE LANDSCAPING PLANS FOR LANDSCAPING REQUIREMENTS.
4. SEE STAGE 3 CROSS SECTIONS FOR GRADING INFORMATION.



DESIGNED <i>PJO</i>	REVISED - ADDENDUM A 02/20/2013	<b>STATE OF ILLINOIS DEPARTMENT OF TRANSPORTATION</b>	<b>EROSION CONTROL - STAGE 3, 3A AND 3B GLACIER PARK DRIVE</b>		F.A.P. RTE.	SECTION	COUNTY	TOTAL SHEETS	SHEET NO.	
DRAWN <i>KES</i>	REVISED -		SCALE: AS SHOWN	SHEET NO. 54 OF 70 SHEETS	STA. 302+00 TO STA. 308+00	338	(112 & 113) WRS-7	DUPAGE	1156	744
CHECKED <i>JCM</i>	REVISED -					CONTRACT NO. 60R30				
DATE <i>12/14/2012</i>	REVISED -					ILLINOIS FED. AID PROJECT				