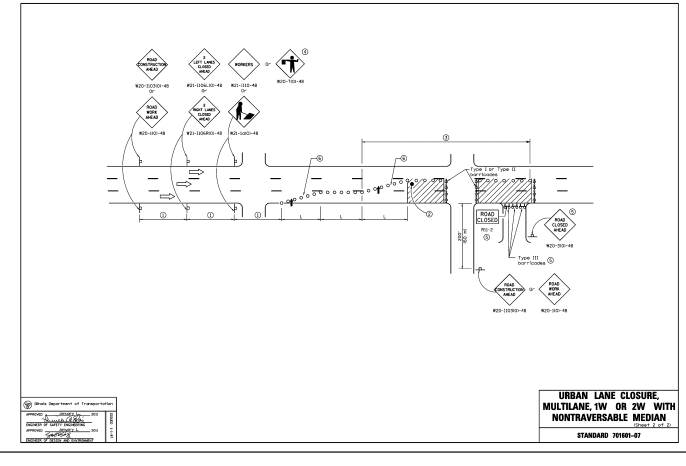
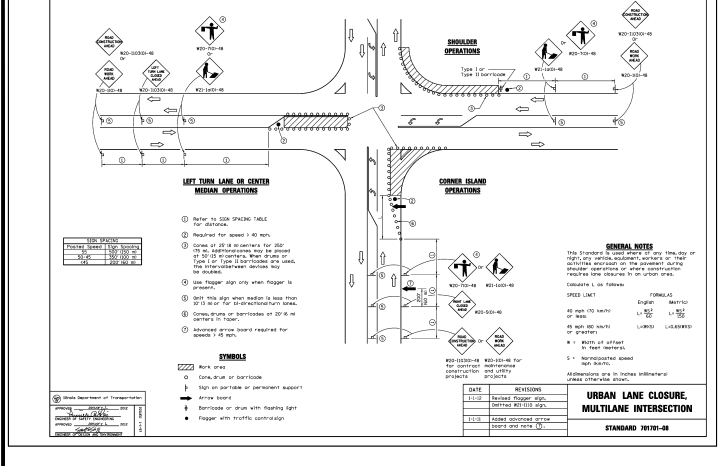
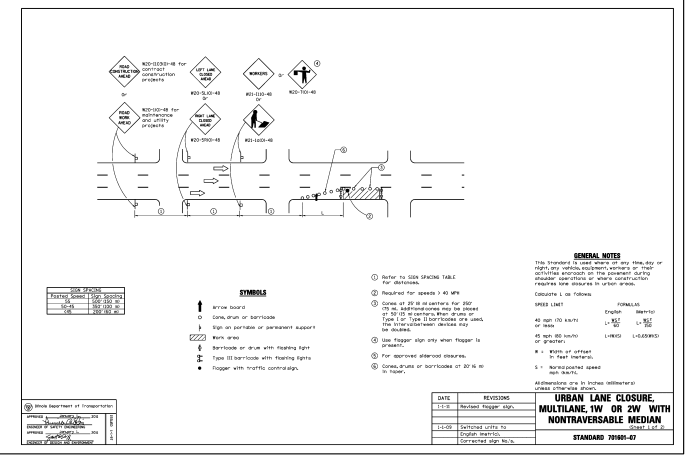
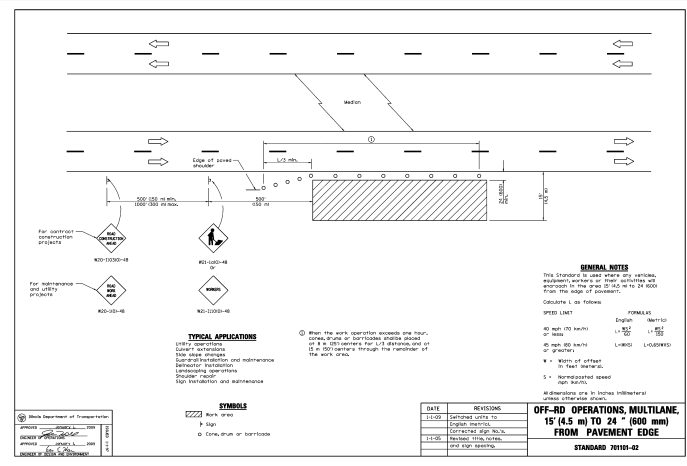
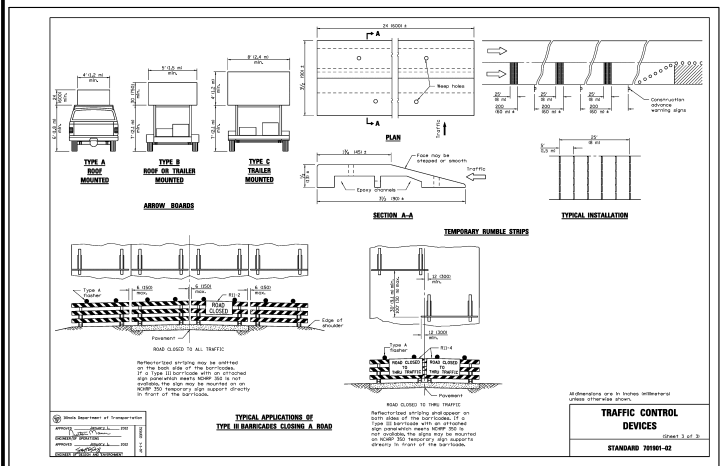
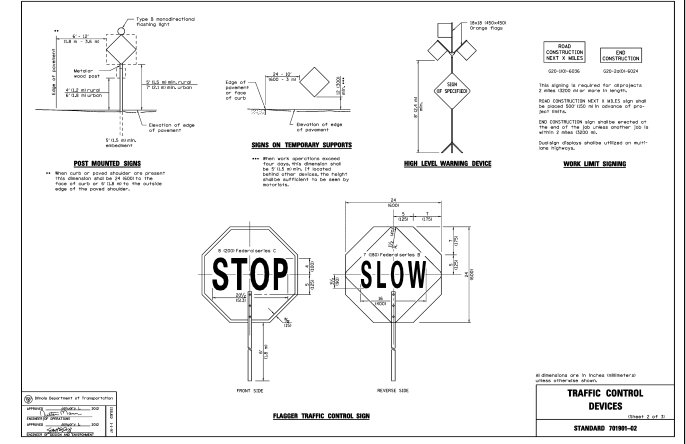
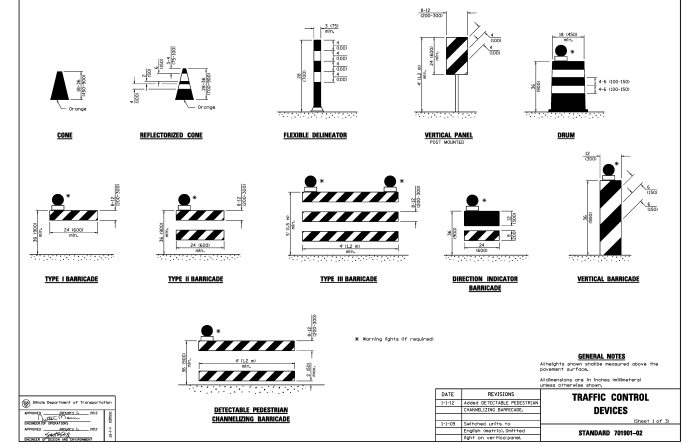
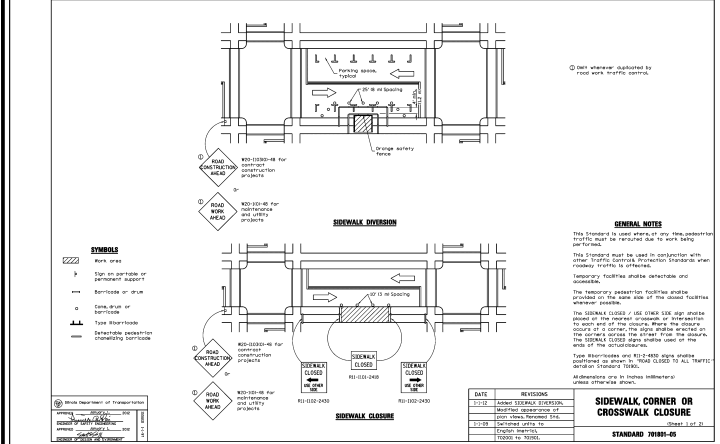
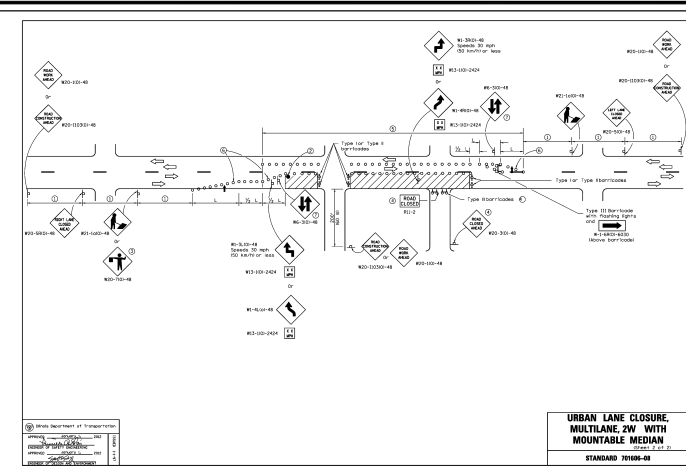
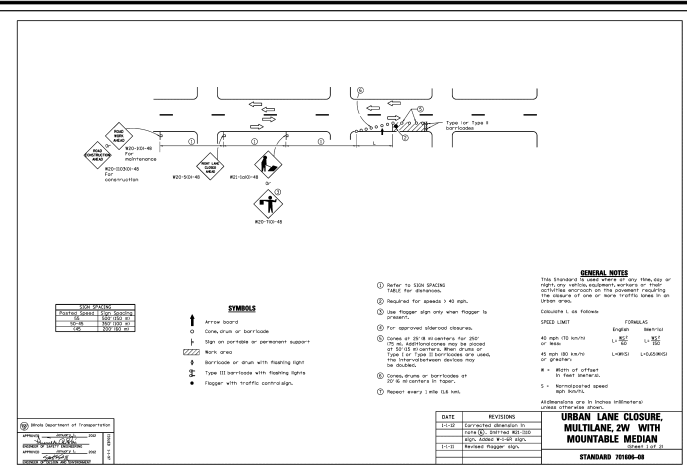
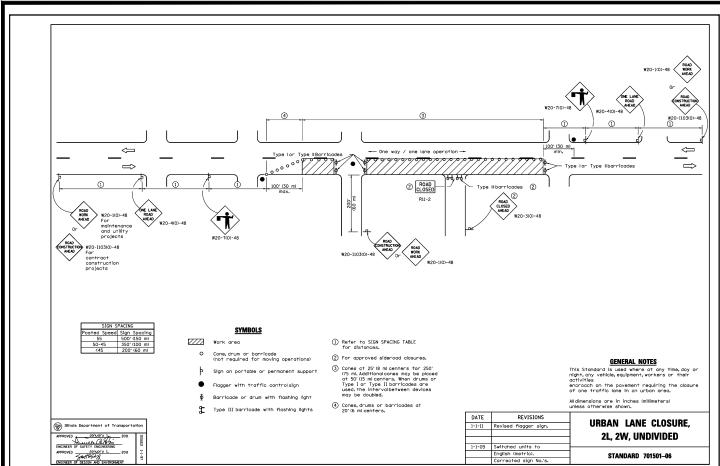


F.A.P. RTE.	SECTION	COUNTY	TOTAL SHEETS	SHEET NO.
338/IL 59	2011-035-1	DUPAGE		
FED. ROAD DIST. NO.		ILLINOIS	CONTRACT 60P42	
		FED. AID PROJECT		

TRAFFIC CONTROL AND PROTECTION

- All work conducted within public right-of-ways shall be governed by the following specifications for traffic control. Traffic control shall be in accordance with the applicable articles of section 107 and 700 of the "Standard Specifications for Road and Bridge Construction", the latest edition of the Illinois Manual on Uniform Traffic Control Devices for Streets and Highways and special details of Illinois Highway Standards listed herein.
- Special attention is called to articles 107.09 of the Standard Specifications and the following highway standards, details and supplemental specifications and mimeographed special provisions contained herein, relating to traffic control.
- The CONTRACTOR shall contact the local agency at least 72 hours in advance of beginning work.
- Standards

70101	701501	701602	701801
701501	701502	701606	701901
701401	701601	701701	704001
- At the pre-construction meeting the CONTRACTOR shall furnish the name of the individual in his direct employ who is to be responsible for the installation and maintenance of the traffic control for this project. If the actual installation and maintenance are to be accomplished by a SUB-CONTRACTOR, consent shall be requested of the ENGINEER at the time of the pre-construction meeting in accordance with Article 108.01 of the Standard Specifications. This shall not relieve the CONTRACTOR of the foregoing requirement for a responsible individual in his direct employ to supervise this work. The CONTRACTOR will provide the name of its representative who will be responsible for the administration of the traffic control plan.
- This item of work shall include furnishing, installing, maintaining, relocating and removing all traffic control devices used for the purpose of regulating, warning or directing traffic during the construction or maintenance of this improvement.
- Traffic control and protection shall be provided as called for in the plans, these special provisions, applicable highway standards, applicable sections of the standard specifications, or as directed by the ENGINEER.
- The following traffic control requirements are of special importance. Conformance to these requirements, however, shall not relieve the CONTRACTOR from conforming to all other applicable requirements of the Standard Specifications for Road and Bridge Construction.
- The governing factor in the execution and staging of work for this project is to provide the motoring public with the safest possible travel conditions along the roadway through this construction zone. The CONTRACTOR shall so arrange his operation as to keep the closing of any lane of the roadway to a minimum.
- All traffic control devices used on this project shall conform to the plans, special provisions, traffic control standards, "Standard Specifications for Traffic Control Devices" and the "Illinois Manual on Uniform Traffic Control Devices for Streets and Highways". No modification of these requirements will be allowed without prior written approval of the ENGINEER.
- Traffic control devices include: signs and their supports, signals, pavement markings, barricades with sand bags, channelizing devices, warning lights, arrow boards, flagger, or any other device used for the purpose of regulating, warning or guiding traffic through the construction zone.
- The CONTRACTOR shall be responsible for the proper location, installation, and arrangement of all traffic control devices. Special attention shall be given to advance warning signs during construction operations in order to keep lane assignment consistent with barricade placement at all times. The CONTRACTOR shall cover all traffic control devices which are inconsistent with detour or lane assignment patterns during the transition from one construction stage to another.
- Construction signs referring to daytime lane closures during working hours shall be removed or covered during non-working hours.
- The CONTRACTOR shall coordinate all traffic control work on this project with adjoining or overlapping projects, including barricade placement necessary to provide a uniform traffic detour pattern. When directed by the ENGINEER, the CONTRACTOR shall remove all traffic control devices which were furnished, installed and maintained by him under this contract, and such devices shall remain the property of the CONTRACTOR. All traffic control devices shall remain in place until specific authorization for relocation or removal is received from the ENGINEER.
- The CONTRACTOR shall ensure that all traffic control devices installed by him are operational 24 hours a day, including Sundays and Holidays.
- The CONTRACTOR shall provide a manned telephone on a continuous 24-hour-a-day basis to receive notification of any deficiencies regarding traffic control and protection and shall dispatch men, materials and equipment to correct any such deficiencies. The CONTRACTOR shall respond to any call from the department concerning any request for improving or correcting traffic control devices and begin making the requested repairs within two hours from the time of notification.
- When traveling in lanes open to the public the CONTRACTOR'S vehicle shall always move with and not against or across the flow of traffic. These vehicles shall enter or leave work areas in a manner which will not be hazardous to, or interfere with, traffic and shall not park or stop except within designated work areas. Personal vehicles shall not park within the right-of-way except in specific areas designated by the ENGINEER.
- Any drop off greater than three inches, but less than six inches within eight feet of the pavement edge shall be protected by Type I or II barricades equipped with mono-directional steady burn lights at 100 foot center to center spacing. If the drop off within eight feet of the pavement edge exceeds six inches, the barricades mentioned above shall be placed at 50 foot center to center spaces. Barricades that must be placed in excavated areas shall have leg extensions installed such that the top of the barricade is in compliance with the height requirements of standard 702001. Vertical panel or other delineating devices may be substituted for Type I or II barricades with the approval of the ENGINEER.
- Check barricades shall be placed in work areas perpendicular to traffic every 100 feet, one (1) lane and shoulder, to prevent motorist from using work areas as a traveled way. Additional check barricades shall be placed in advance of any hazard in the work area which would endanger a motorist. Check barricades shall be Type I or II and equipped with a flashing light.
- Placement of all signs and barricades shall proceed in the direction of flow of traffic. Removal of all signs and barricades shall start at the end of the construction areas and proceed toward oncoming traffic unless otherwise directed by ENGINEER.
- Delays on the CONTRACTOR caused by complying with these requirements will be considered incidental to the item for traffic control and protection, and no additional compensation will be allowed.
- This item of work will be measured on a lump sum basis for furnishing, installing, maintaining, relocating and removing the traffic control devices required in the plans and these special provisions. Payment for traffic control and protection shall be considered as included in the work being done or as specified in the contract.



PROJECT TITLE					ROUTE 59 ROAD IMPROVEMENTS				
PROJECT DESCRIPTION					DETAILS AND STANDARDS				
ENGINEER	BCC	DRAFTING DATE	8-04-12	MAP #	4211,4224	SCALE	N.T.S.		
GIS DESIGN BY	DL	DRAWN BY	PSM	REVISIONS DATE	N/A	AT&T JOINT AGREEMENT #	PROJECT # EU-12		
CHECKED BY		APPROVED BY		CAD FILE	0061123001D13.DWG	SHEET #	13 OF 40		
Naperville					Department of Public Utilities				
					Electric Division				
					WORK REQUEST # 61123				