

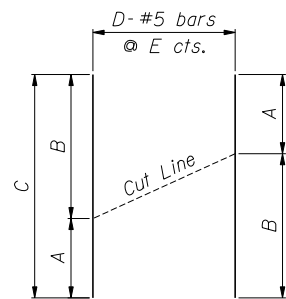
ELEVATION

Notes:

Minimum lap for #5 bar is 3'-8".

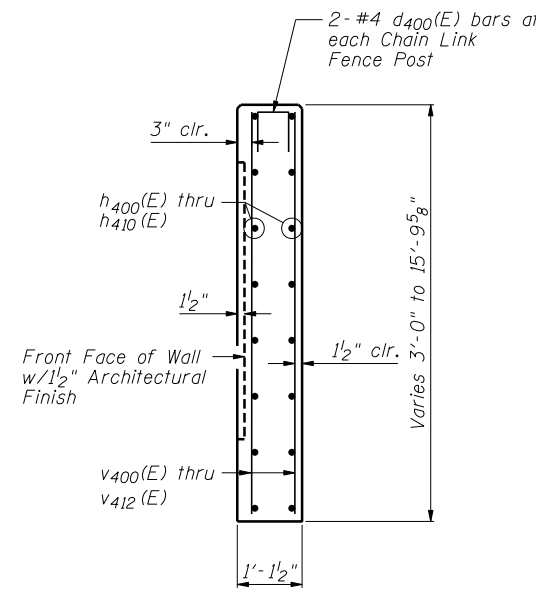
Space reinforcement in wall to miss shear studs.

\* signifies cut bar. Order per length on Bill of Material. Cut as shown in Cutting Diagram and use half of bars in each face.

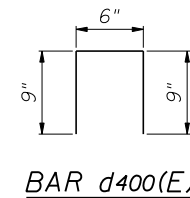


CUTTING DIAGRAM

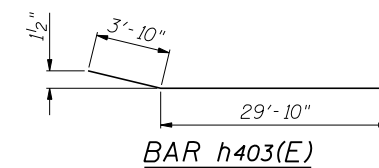
Bar	A	B	C	D	E
h400(E)	19'-8"	33'-8"	53'-4"	9	10"
h405(E)	10'-2"	17'-7"	27'-9"	5	10"
h407(E)	1'-4"	16'-7"	17'-11"	10	10"
v400(E)	2'-8"	9'-7"	12'-3"	15	12"
v401(E)	9'-7"	10'-1"	19'-8"	16	12"
v402(E)	10'-1"	10'-9"	20'-10"	31	12"
v403(E)	10'-9"	11'-5"	22'-2"	31	12"
v404(E)	11'-5"	12'-2"	23'-7"	31	12"
v405(E)	12'-2"	12'-11"	25'-1"	31	12"
v406(E)	12'-11"	13'-8"	26'-7"	31	12"
v407(E)	13'-8"	14'-2"	27'-10"	31	12"
v408(E)	14'-2"	14'-9"	28'-11"	31	12"
v409(E)	14'-9"	15'-3"	30'-0"	31	12"
v411(E)	15'-4"	11'-9"	27'-1"	8	12"
v412(E)	11'-9"	2'-8"	14'-5"	19	12"



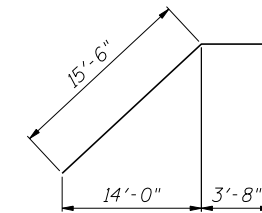
SECTION THRU CONCRETE FACING



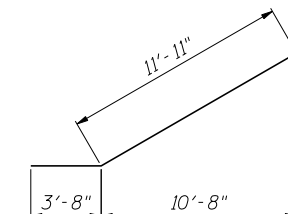
BAR d400(E)



BAR h403(E)



BAR h408(E)



BAR h409(E)

BILL OF MATERIAL

Bar	No.	Size	Length	Shape
d400(E)	86	#4	2'-0"	□
h400(E)	9	#5	53'-4"	—
h401(E)	162	#5	33'-8"	—
h402(E)	104	#5	29'-8"	—
h403(E)	28	#5	33'-8"	—
h404(E)	30	#5	21'-8"	—
h405(E)	5	#5	27'-9"	—
h406(E)	8	#5	17'-7"	—
h407(E)	10	#5	17'-11"	—
h408(E)	2	#5	19'-2"	—
h409(E)	2	#5	15'-7"	—
h410(E)	2	#5	19'-7"	—
v400(E)	15	#5	12'-3"	—
v401(E)	16	#5	19'-8"	—
v402(E)	31	#5	20'-10"	—
v403(E)	31	#5	22'-2"	—
v404(E)	31	#5	23'-7"	—
v405(E)	31	#5	25'-1"	—
v406(E)	31	#5	26'-7"	—
v407(E)	31	#5	27'-10"	—
v408(E)	31	#5	28'-11"	—
v409(E)	31	#5	30'-0"	—
v410(E)	22	#5	15'-3"	—
v411(E)	8	#5	27'-1"	—
v412(E)	19	#5	14'-5"	—
Item		Unit	Quantity	
Concrete Structures		Cu. Yd.	159.2	
Reinforcement Bars, Epoxy Coated		Pound	19,780	
Pipe Underdrains for Structures, 4"		Foot	345	
Geocomposite Wall Drain		Sq. Yd.	255	

FILE NAME = ...GPR30-W047-008-ConcreteFacing2.dgn



Zroka Engineering, P.C.  
4216 North Hermitage  
Chicago, IL 60613

DESIGNED - LAS	REVISED -
CHECKED - DAZ	REVISED -
DRAWN - SAW	REVISED -
CHECKED - LAS	REVISED -

STATE OF ILLINOIS  
DEPARTMENT OF TRANSPORTATION

CONCRETE FACING & DETAILS  
STA. 3965+23.00 TO STA. 3968+25.00 SN 022-W047

SHEET NO. SA-8 OF SA-13 SHEETS

F.A.P. RTE.	SECTION	COUNTY	TOTAL SHEETS	SHEET NO.
338	(112 & 113) WRS-7	DUPAGE	1156	854
CONTRACT NO. 60R30			ILLINOIS FED. AID PROJECT	