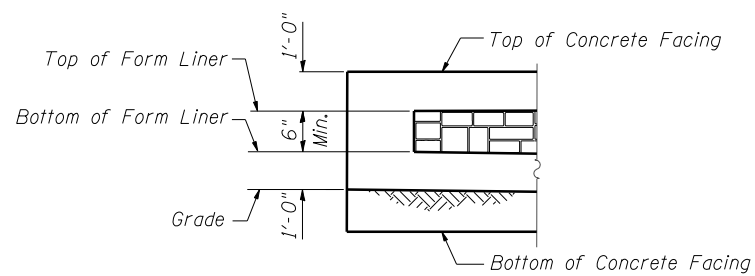
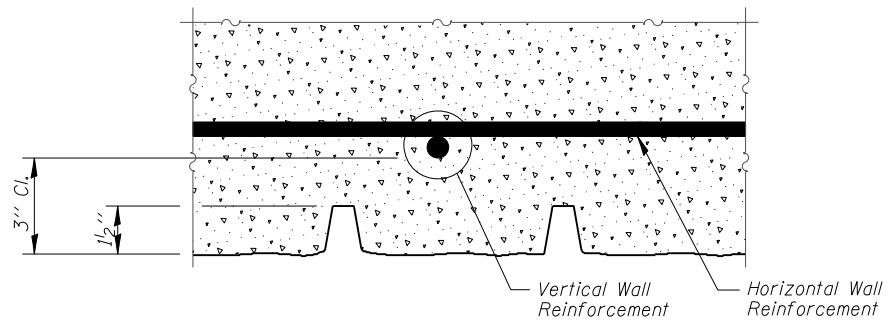


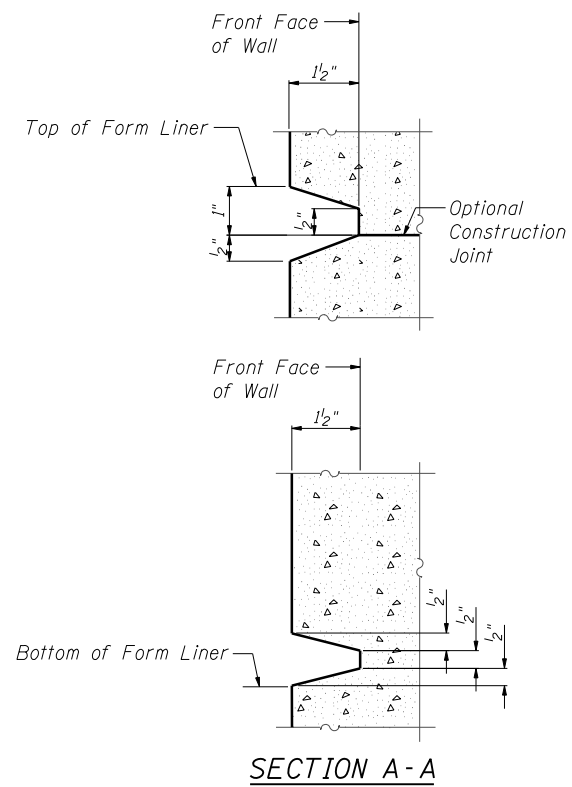
ELEVATION - FORM LINER



END FORM LINER FINISH



PLAN - FORM LINER



FORM LINER ELEVATION TABLE

Station	Form Liner Top Elevation	Form Liner Bottom Elevation
3964+32.50	None	None
3964+30.08	697.00	696.50
3964+11.86	697.00	685.95
3964+02.50	697.00	686.07
3963+72.50	697.00	686.46
3963+42.50	697.00	686.91
3963+12.50	697.00	687.52
3962+82.52	697.00	688.18
3962+52.54	697.00	688.89
3962+22.56	697.00	689.80
3961+92.55	697.00	690.65
3961+63.07	697.00	691.25
3961+33.63	697.00	692.06
3961+04.17	697.00	692.98
3960+74.73	697.00	694.00
3960+45.29	697.00	695.02
3960+15.51	697.00	696.04
3960+04.80	697.00	696.50
3959+87.00	None	None
3959+58.50	None	None
3959+30.00	None	None

FILE NAME = ...60R30-W061-013-ArchFinish.dgn



Zroka Engineering, P.C.
4216 North Hermitage
Chicago, IL 60613

DESIGNED - LAS	REVISED -
CHECKED - DAZ	REVISED -
DRAWN - SAW	REVISED -
CHECKED - LAS	REVISED -
SCALE - NONE	
DATE - 12/14/2012	

**STATE OF ILLINOIS
DEPARTMENT OF TRANSPORTATION**

**ARCHITECTURAL FINISH DETAILS
STA. 3959 + 30.00 TO STA. 3964 + 32.50 SN 022-W061**

SHEET NO. SB-13 OF SB-17 SHEETS

F.A.P. RTE.	SECTION	COUNTY	TOTAL SHEETS	SHEET NO.
338	(112 & 113) WRS-7	DUPAGE	1156	872
			CONTRACT NO. 60R30	
ILLINOIS FED. AID PROJECT				