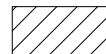




LEGEND

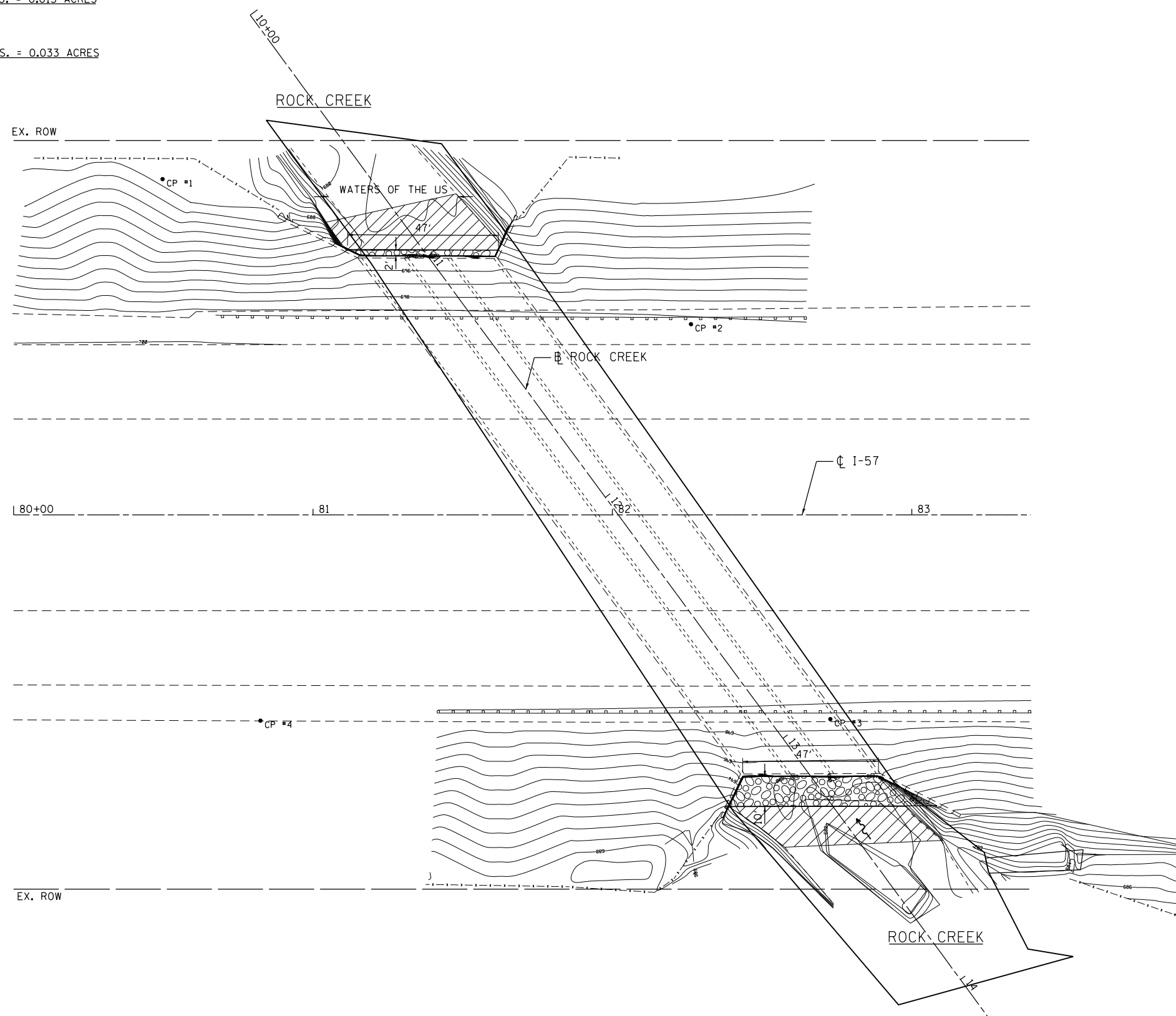


PERMANENT IMPACTS TO THE WATERS OF THE U.S. = 0.015 ACRES
STONE RIPRAP, CLASS A4 (2' THICK) - 92 TONS



TEMPORARY IMPACTS TO THE WATERS OF THE U.S. = 0.033 ACRES

- CP 1 - SET REBAR IN SOUTH OF ROCK CREEK
- CP 2 - SET PK NAIL IN HMA SHOULDER WEST SIDE OF IL 57 ELEV. = 699.31
- CP 3 - SET PK NAIL IN HMA SHOULDER EAST OF CL IL 57 ELEV. = 698.68
- CP 4 - SET PK NAIL IN HMA SHOULDER EAST OF CL IL 57 SOUTH OF ROCK CREEK



3/12/2013 11:24:38 AM

GRAEF 8501 W. Higgins Road, Suite 280
Chicago, Illinois 60631
(773) 399-0112

USER NAME = 1485	DESIGNED -	REVISED -
DRAWN -	REVISED -	
PLOT SCALE = 40.0000' / in.	CHECKED -	REVISED -
PLOT DATE = 3/12/2013	DATE - 03/20/2013	REVISED -

**STATE OF ILLINOIS
DEPARTMENT OF TRANSPORTATION**

**COOK & WILL COUNTY RIP RAP IMPROVEMENTS
SN 099-2001 I-57 AT ROCK CREEK - EROSION PLAN**

SCALE: 1"=20' SHEET 2 OF 2 SHEETS STA. TO STA.

F.A. RTE.	SECTION	COUNTY	TOTAL SHEETS	SHEET NO.
*	2012-007 I	COOK/WILL	38	27
* VARIOUS ROUTES			CONTRACT NO. 60T53	
ILLINOIS FED. AID PROJECT				