

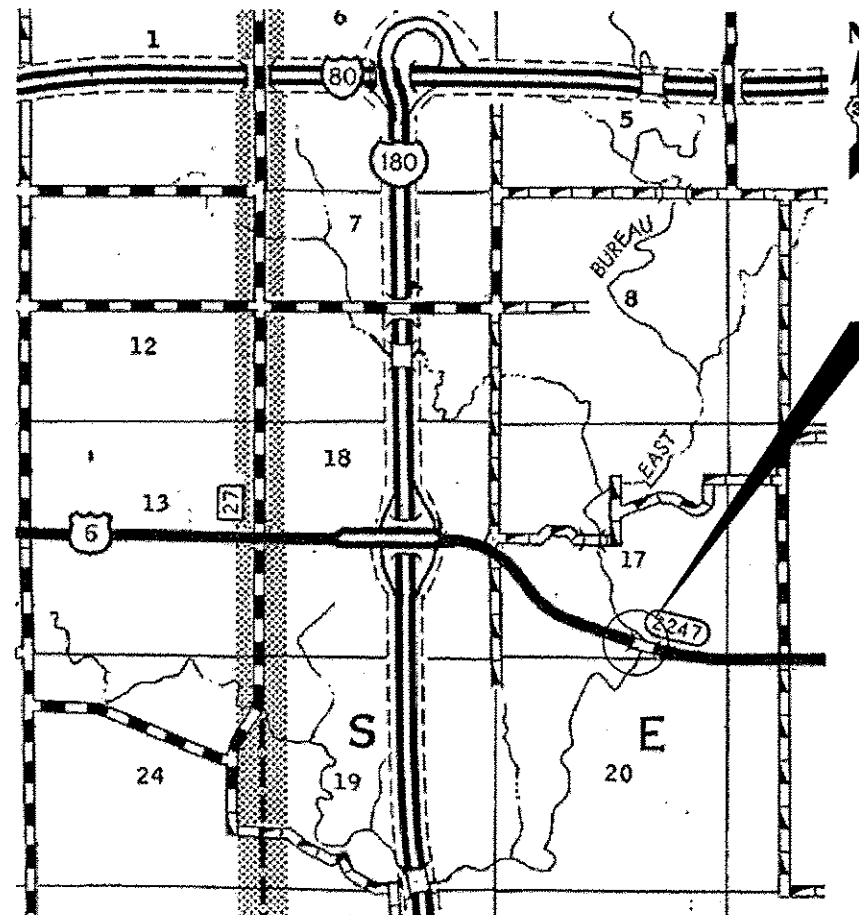
STATE OF ILLINOIS  
DEPARTMENT OF TRANSPORTATION  
DIVISION OF HIGHWAYS

**PROPOSED  
HIGHWAY PLANS**

F.A.S. ROUTE 2247 (US 6)  
SECTION (13C-BR)BP

CLEANING AND PAINTING STRUCTURAL STEEL  
STRUCTURE NO. 006-0137  
BUREAU COUNTY

C-93-085-13



POINT LOCATION

**PROJECT LOCATION**  
SN 006-0137  
CARRYING FAS 2247 (US 6) OVER  
EAST BUREAU CREEK  
1.3 MILES EAST OF I-180

F.A.S. RTE.	SECTION	COUNTY	TOTAL SHEETS	SHEET NO.
2247	(13C-BR)BP	BUREAU	8	1
		ILLINOIS	CONTRACT NO. 66C90	

D-93-040-13



LOCATION OF SECTION INDICATED THIS: - [shaded box]

**FUNCTIONAL CLASSIFICATION**

MAJOR COLLECTOR

FAS 2247 (US 6)

2011 ADT = 2700

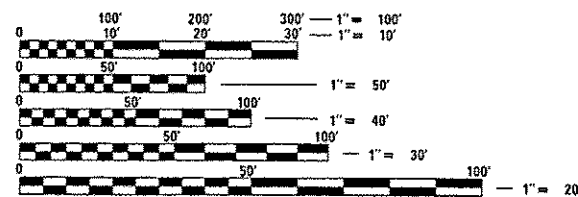
P.V. = 95.93% M.U. = 1.85% S.U. = 2.22%

**INDEX OF SHEETS**

- 1 COVER SHEET
- 2 GENERAL NOTES
- 3 SUMMARY OF QUANTITIES
- 4 TYPICAL SECTIONS
- 5-6 TRAFFIC CONTROL AND PROTECTION STANDARD 701321 (SPECIAL)
- 7-8 EXISTING STRUCTURE PLANS

**STANDARDS**

- 000001-06 STANDARD SYMBOLS, ABBREVIATIONS AND PATTERNS
- 001006 DECIMAL OF AN INCH AND OF A FOOT
- 635011-02 REFLECTOR MARKER AND MOUNTING DETAILS
- 701001-02 OFF-ROAD OPERATIONS, 2L, 2W, MORE THAN 15' (4.5m) AWAY
- 701006-03 OFF-RD OPERATIONS, 2L, 2W, 15' (4.5m) TO 24" (600m) FROM PAVEMENT EDGE
- 701201-04 LANE CLOSURE, 2L, 2W, DAY ONLY, FOR SPEEDS > 45 MPH
- 701301-04 LANE CLOSURE, 2L, 2W, SHORT TIME OPERATIONS
- 701311-03 LANE CLOSURE, 2L, 2W, MOVING OPERATIONS-DAY ONLY
- 701321-11 LANE CLOSURE, 2L, 2W, BRIDGE REPAIRS WITH BARRIER
- 701901-02 TRAFFIC CONTROL DEVICES
- 704001-07 TEMPORARY CONCRETE BARRIER
- 780001-03 TYPICAL PAVEMENT MARKINGS



FULL SIZE PLANS HAVE BEEN PREPARED USING STANDARD ENGINEERING SCALES. REDUCED SIZED PLANS WILL NOT CONFORM TO STANDARD SCALES. IN MAKING MEASUREMENTS ON REDUCED PLANS, THE ABOVE SCALES MAY BE USED.

J.U.L.I.E.  
JOINT UTILITY LOCATION INFORMATION FOR EXCAVATION  
1-800-892-0123  
OR 811

DISTRICT 3 NO. (815) 434-6131  
PROJECT ENGINEER: JOE KANNEL, P.E.  
UNIT CHIEF: RON WOODSHANK  
TOWNSHIP: SELBY  
CONTRACT NO. 66C90

STATE OF ILLINOIS  
DEPARTMENT OF TRANSPORTATION  
DIVISION OF HIGHWAYS

SUBMITTED 3-29-13  
Paul A. Latham  
DEPUTY DIRECTOR OF HIGHWAYS, REGION ENGINEER

April 26 2013  
John D. Baranzelli, P.E.  
ENGINEER OF DESIGN AND ENVIRONMENT

April 26 2013  
Cher Osburn, P.E.  
DIRECTOR OF HIGHWAYS, CHIEF ENGINEER

**PRINTED BY THE AUTHORITY  
OF THE STATE OF ILLINOIS**

## GENERAL NOTES

AS PER ARTICLE 107.20 OF THE STANDARD SPECIFICATIONS WHENEVER PUBLIC OR PRIVATE PROPERTY IS DAMAGE OR DESTROYED DUE TO THE OPERATIONS OF THE CONTRACTOR, THE CONTRACTOR SHALL, AT NO ADDITIONAL COST TO THE DEPARTMENT, RESTORE SUCH PROPERTY TO A CONDITION EQUAL TO THE EXISTING BEFORE SUCH DAMAGE OR INJURY WAS DONE BY REPAIRING, REBUILDING, OR REPLACING IT AS MAY BE DIRECTED, OR THE CONTRACTOR SHALL OTHERWISE MAKE GOOD SUCH DAMAGE OR DESTRUCTION IN AN ACCEPTABLE MANNER.

PLAN DIMENSIONS AND DETAILS RELATIVE TO EXISTING PLANS ARE SUBJECT TO ROUTINE VARIATIONS. THE CONTRACTOR SHALL FIELD VERIFY EXISTING DIMENSIONS AND DETAILS AFFECTING NEW CONSTRUCTION AND MAKE NECESSARY APPROVED ADJUSTMENT PRIOR TO CONSTRUCTION OR ORDERING OF MATERIALS. SUCH VARIATIONS SHALL NOT BE CAUSE FOR ADDITIONAL COMPENSATION FOR A CHANGE IN THE SCOPE OF THE WORK. HOWEVER, THE CONTRACTOR WILL BE PAID FOR THE QUANTITY FURNISHED BASED UPON THE UNIT BID FOR THE WORK.

FOR STABILIZATION, ALL TYPE III BARRICADES SHALL REQUIRE A MINIMUM OF FOUR SAND BAGS PER BARRICADE.

THE CONTRACTOR SHALL BE RESPONSIBLE FOR PROTECTING UTILITY PROPERTY FROM CONSTRUCTION OPERATIONS AS OUTLINED IN ARTICLE 107.31 OF THE STANDARD SPECIFICATIONS. THE "JULIE" NUMBER IS 1-800-892-0123. A MINIMUM OF FORTY-EIGHT (48) HOURS ADVANCE NOTICE IS REQUIRED.

WHERE SECTION OR SUBSECTION MONUMENTS ARE ENCOUNTERED, THE ENGINEER SHALL BE NOTIFIED BEFORE SUCH MONUMENTS ARE REMOVED. THE CONTRACTOR SHALL PROTECT AND CAREFULLY PRESERVE ALL MONUMENTS UNTIL AN AUTHORIZED SURVEYOR OR AGENT HAS WITNESSED OR OTHERWISE REFERENCED THEIR LOCATION. THE CONTRACTOR SHALL BE RESPONSIBLE FOR HAVING AN AUTHORIZED SURVEYOR REESTABLISH ANY SECTION OR SUBSECTION MONUMENTS DESTROYED BY HIS OPERATIONS.

ANY REFERENCE TO A STANDARD IN THESE PLANS SHALL BE INTERPRETED TO MEAN THE EDITION AS INDICATED BY THE SUBNUMBER LISTED ON THE INDEX OF SHEETS OR THE COPY OF THE STANDARD INCLUDED IN THESE PLANS.

THE CONTRACTOR SHALL BE REQUIRED TO SECURE WASTE CONTAINERS THAT REMAIN ON THE JOB SITE. THIS WILL ENTAIL THAT ALL WASTE CONTAINERS CAN NOT BE MOVED OR OPENED DURING NON-WORKING HOURS.

THE EXISTING STRUCTURAL STEEL CONTAINS LEAD. THE CONTRACTOR SHOULD TAKE APPROPRIATE PRECAUTIONS TO DEAL WITH THE PRESENCE OF LEAD PAINT ON THIS PROJECT.

IF THE CONTRACTOR/SUBCONTRACTOR LICENSED TO DISPOSE OF LEAD PAINT RESIDUE FAILS TO DISPOSE OF PAINT RESIDUES ON OR BEFORE THE SPECIFIED COMPLETION DATE, LIQUIDATED DAMAGES SHALL BE CHARGED PER CALENDAR DAY ACCORDING TO ARTICLE 108.09 OF THE STANDARD SPECIFICATIONS UNTIL SUCH TIME THAT THE PAINT RESIDUES HAVE BEEN PROPERLY DISPOSED OF.

THE SSPC-OP1 AND SSPC-OP2 PAINTING CONTRACTOR CERTIFICATIONS WILL BE REQUIRED FOR THIS PROJECT.

### STRUCTURE NO. 006-0137

ALL EXISTING STEEL, INCLUDING BEAMS, DIAPHRAGMS, ANGLES, BEARINGS (AND ALL COMPONENTS) ETC. SHALL BE CLEANED PER NEAR WHITE BLAST CLEANING, SSPC-SP10. ALL EXISTING STEEL SHALL BE PAINTED ACCORDING TO THE REQUIREMENTS OF PAINT SYSTEM 1 - OZ/EU. THE COLOR OF THE FINAL FINISH COAT FOR ALL INTERIOR STEEL SURFACES SHALL BE GREY, MUNSELL NO. 5B 7/L. THE COLOR OF THE FINAL FINISH COAT FOR THE EXTERIOR AND BOTTOM FLANGE OF FASICA BEAMS SHALL BE GREEN, MUNSELL NO. 7.5G 4/8.

THE CONTRACTOR SHALL FURNISH AND INSTALL A MINIMUM OF TWO (2) AIR MONITORS FOR THIS PROJECT TO MONITOR ABRASIVE BLASTING AT THIS SITE. SEE SPECIAL PROVISION FOR "CONTAINMENT AND DISPOSAL OF LEAD PAINT CLEANING RESIDUES".

## COMMITMENTS

DISPOSAL OF EXCAVATED MATERIALS. ALL SUITABLE OR UNSUITABLE MATERIALS EXCAVATED DUE TO CONSTRUCTION OPERATIONS SHALL BE DISPOSED OF WITHIN THE LIMITS OF EXISTING RIGHT OF WAY. DISPOSAL OF EXCAVATED MATERIALS OFF THE RIGHT OF WAY SHALL NOT BE PERMITTED.

EXCAVATED MATERIALS SHALL BE DISPOSED OF AT LOCATIONS DIRECTED BY THE ENGINEER. ANY SUCH DISPOSAL SHALL NOT CREATE AND UNSIGHTLY OR OBJECTIONABLE APPEARANCE OR DETRACT FROM THE NATURAL TOPOGRAPHIC FEATURES WITHOUT WRITTEN PERMISSION FROM THE ENGINEER.

DATE: 3-29-13

PREPARED BY: Don Brown  
DISTRICT STUDIES & PLANS ENGINEER

EXAMINED BY: Herb Orsino  
DISTRICT CONSTRUCTION ENGINEER

Ray J. Smith  
DISTRICT MATERIALS ENGINEER

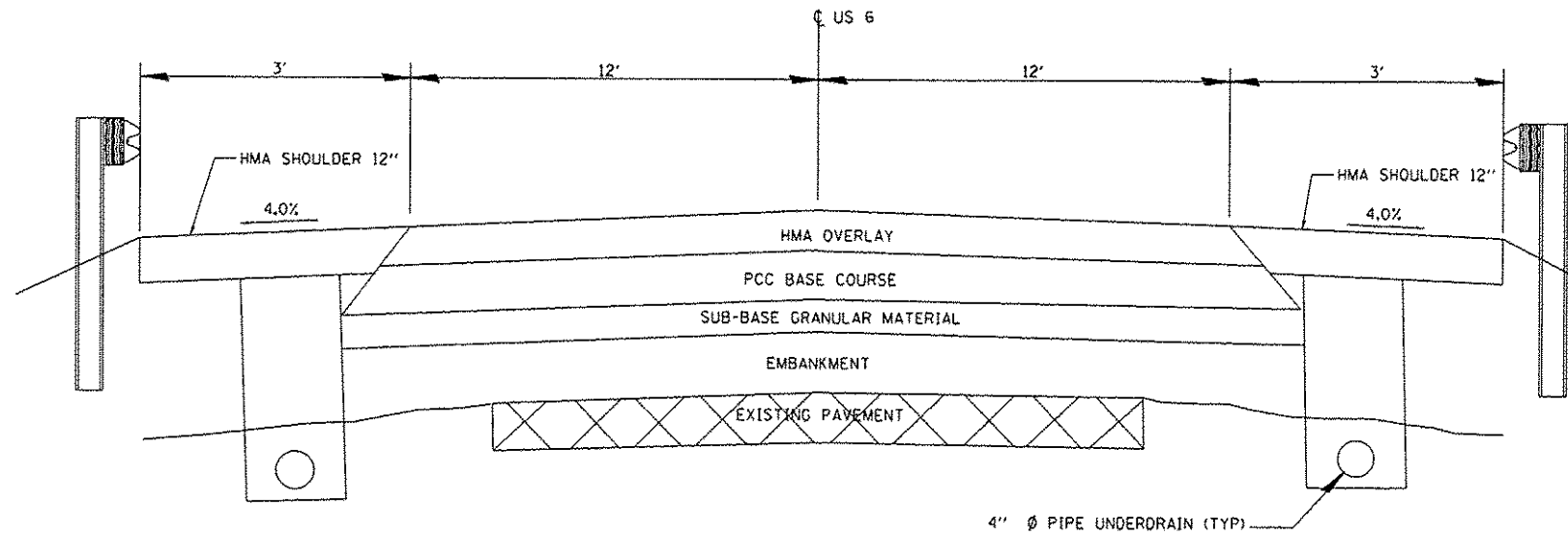
Bruce A. Ancker  
DISTRICT OPERATIONS ENGINEER

FILE NAME *	USER NAME * spurlockd	DESIGNED - DBS	REVISED -	<b>STATE OF ILLINOIS DEPARTMENT OF TRANSPORTATION</b>	<b>GENERAL NOTES</b>	F.A.S. RTE. 2247	SECTION (13C-BRIBP)	COUNTY BUREAU	TOTAL SHEETS 8	SHEET NO. 2		
c:\p\work\p\dot\spurlockd\030611\030611-0137-0137-0137.dgn	DRAWN - DBS	REVISED -	SCALE: NONE			SHEET 1 OF 1 SHEETS	STA. TO STA.	ILLINOIS FED. AID PROJECT				
Default	PLOT SCALE * 100.0000' / 1" / in.	CHECKED -	REVISED -									
	PLOT DATE * 3/26/2013	DATE - MAR 2013	REVISED -									

CODE NO.	ITEM	UNIT	CONSTR. CODE
			STATE FUNDS 100% STATE STRUCTURE 0014 RURAL
50606701	CLEANING AND PAINTING STRUCTURAL STEEL, LOCATION 1	L SUM	1
67100100	MOBILIZATION	L SUM	1
70100450	TRAFFIC CONTROL AND PROTECTION, STANDARD 701201	L SUM	1
70106500	TEMPORARY BRIDGE TRAFFIC SIGNALS	EACH	1
70400100	TEMPORARY CONCRETE BARRIER	FOOT	413
70400200	RELOCATE CONCRETE BARRIER TEMPORARY	FOOT	163
70600250	IMPACT ATTENUATORS, TEMPORARY (NON-REDIRECTIVE), TEST LEVEL 3	EACH	2
70600350	IMPACT ATTENUATORS, RELOCATE (NON-REDIRECTIVE), TEST LEVEL 3	EACH	2
* 78001110	PAINT PAVEMENT MARKING - LINE 4"	FOOT	1400
* 78001130	PAINT PAVEMENT MARKING - LINE 6"	FOOT	180
78300100	PAVEMENT MARKING REMOVAL	SQ FT	560
X5067501	BRIDGE CLEANING AND PAINTING WARRANTY NUMBER 1	L SUM	1
X7010202	TRAFFIC CONTROL AND PROTECTION, STANDARD 701321 (SPECIAL)	EACH	1
Z0007101	CONTAINMENT AND DISPOSAL OF LEAD PAINT CLEANING RESIDUES NO. 1	L SUM	1

14 \* SPECIALITY ITEMS

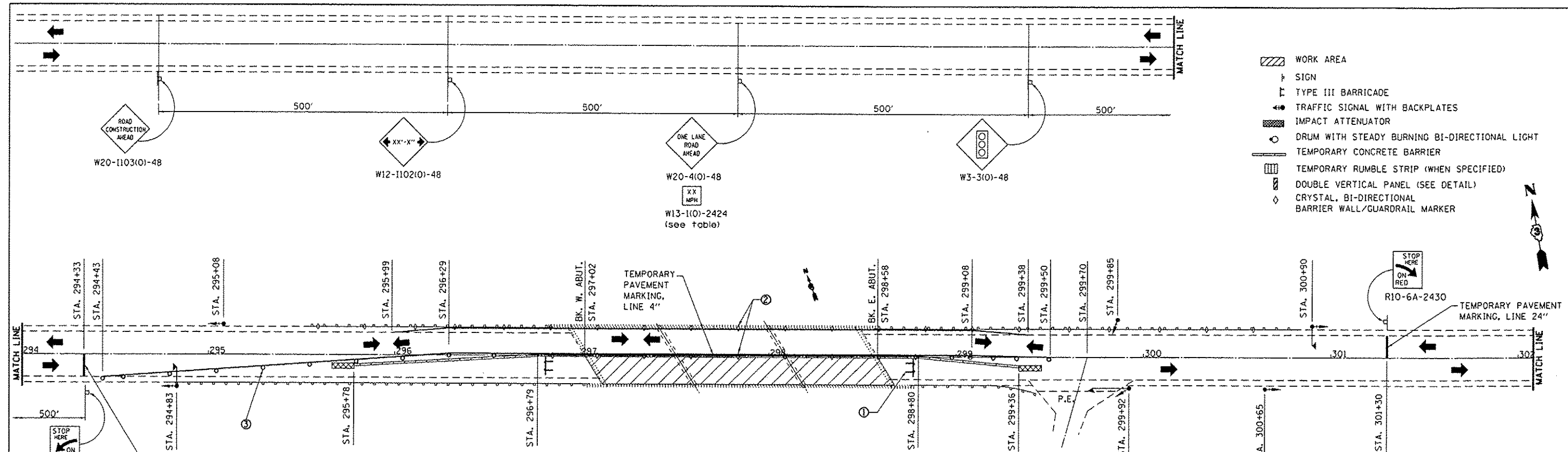
FILE NAME *	USER NAME *	DESIGNED -	REVISED -	<b>STATE OF ILLINOIS DEPARTMENT OF TRANSPORTATION</b>	<b>SUMMARY OF QUANTITIES</b>	F.A.S. RTE.	SECTION	COUNTY	TOTAL SHEETS	SHEET NO.
c:\pwwork\pwwork\spurlock\0336411\036411-036411-036411.dgn	spurlock	DRAWN -	REVISED -			2247	(13C-BR)BP	BUREAU	8	3
Default	PLOT SCALE * 100.0000 / in.	CHECKED -	REVISED -			SCALE: NONE SHEET 1 OF 1 SHEETS STA. TO STA.		CONTRACT NO. 66C90		
	PLOT DATE * 3/29/2013	DATE -	REVISED -			ILLINOIS FED. AID PROJECT				



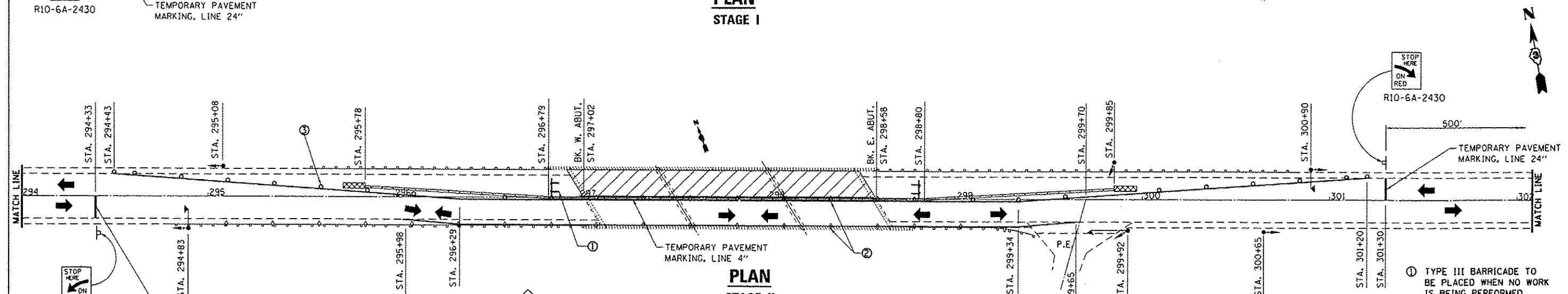
**TYPICAL SECTION**

FILE NAME *	USER NAME * spurlackd	DESIGNED - DBS	REVISED -	<b>STATE OF ILLINOIS DEPARTMENT OF TRANSPORTATION</b>	<b>TYPICAL SECTIONS</b>	F.A.S. RTE.	SECTION	COUNTY	TOTAL SHEETS	SHEET NO.	
c:\pwwork\spurlackd\spurlackd\033641\0366C90-ht-details.dgn	DRAWN - DBS	REVISED -	2247			113C-BR1BP	BUREAU	8	4		
Default	PLT SCALE * 100.0000' / in.	CHECKED -	REVISED -			CONTRACT NO. 66C90		ILLINOIS FED. AID PROJECT			
	PLOT DATE * 3/26/2013	DATE - MAR 2013	REVISED -			SCALE: NONE	SHEET 1 OF 1 SHEETS	STA. TO STA.			

- WORK AREA
- SIGN
- TYPE III BARRICADE
- TRAFFIC SIGNAL WITH BACKPLATES
- IMPACT ATTENUATOR
- DRUM WITH STEADY BURNING BI-DIRECTIONAL LIGHT
- TEMPORARY CONCRETE BARRIER
- TEMPORARY RUMBLE STRIP (WHEN SPECIFIED)
- DOUBLE VERTICAL PANEL (SEE DETAIL)
- CRYSTAL, BI-DIRECTIONAL BARRIER WALL/GUARDRAIL MARKER



**PLAN  
STAGE I**



**PLAN  
STAGE II**

- ① TYPE III BARRICADE TO BE PLACED WHEN NO WORK IS BEING PERFORMED.
- ② BARRIER WALL/GUARDRAIL MARKERS AT 25' CTS. SEE STANDARDS 704001 AND 635011.
- ③ DRUMS AT 25' CTS. (TYPICAL)

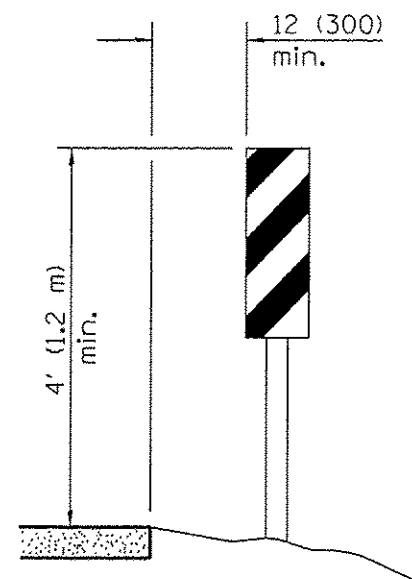
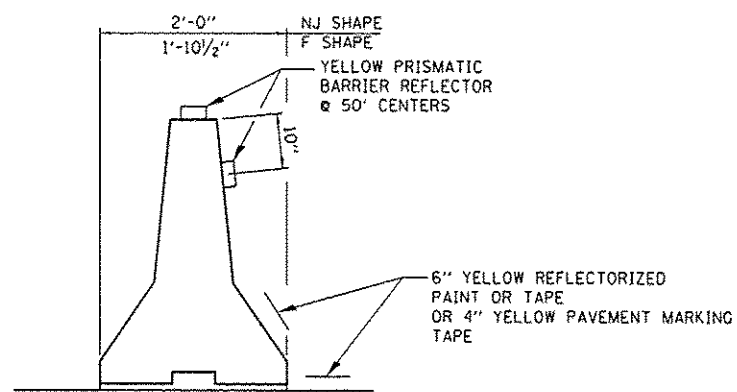
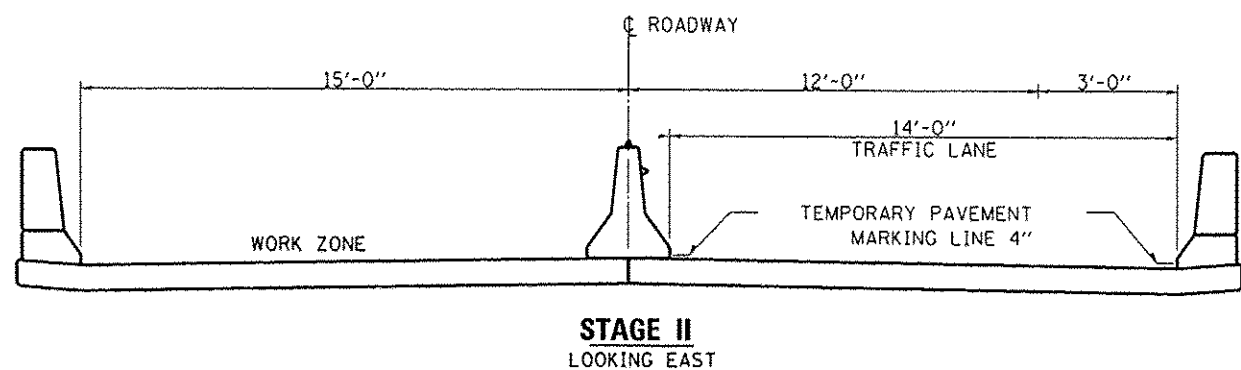
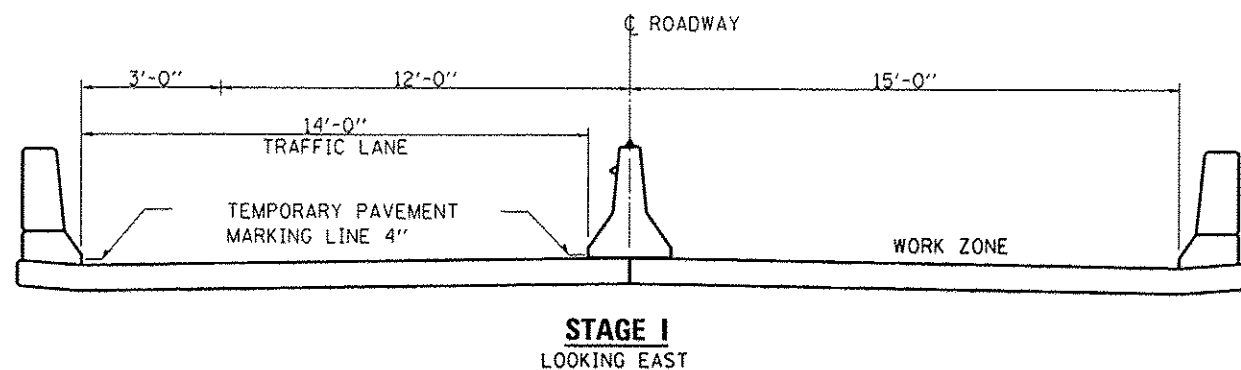
**GENERAL NOTES**

SEE TRAFFIC CONTROL AND PROTECTION STANDARD 701321 FOR DETAILS NOT SHOWN

TEMPORARY PAVEMENT MARKINGS SHOWN WILL NOT BE MEASURED FOR PAYMENT.

REMOVAL OF TEMPORARY PAVEMENT MARKINGS WILL NOT BE MEASURED FOR PAYMENT.

FILE NAME =	USER NAME = spurlackd	DESIGNED - DBS	REVISED -	<b>STATE OF ILLINOIS DEPARTMENT OF TRANSPORTATION</b>	<b>TRAFFIC CONTROL AND PROTECTION STANDARD 701321 (SPECIAL)</b>		F.A.S. RTE.	SECTION	COUNTY	TOTAL SHEETS	SHEET NO.	
c:\pwwork\spurlackd\0336411\036	BC10-shr-detailed.dgn	DRAWN - DBS	REVISED -		SCALE: NONE	SHEET 1 OF 2 SHEETS	STA. TO STA.	2247	113C-BRIBP	BUREAU	8	5
Default	PLOT SCALE = 1/8" = 100.0000' / 1"	CHECKED -	REVISED -									
	PLOT DATE = 3/27/2013	DATE - MAR 2013	REVISED -									
							CONTRACT NO. 66C90		ILLINOIS FED. AID PROJECT			



TEMPORARY CONCRETE BARRIER	
NORMAL POSTED SPEED	TAPER RATIO
40 mph AND ABOVE	12:1
BELOW 40 mph	8:1

ADVISORY SPEED LIMIT	
NORMAL POSTED SPEED	ADVISORY SPEED
55 - 45 mph	40 mph
40 mph	35 mph
35 - 30 mph	30 mph

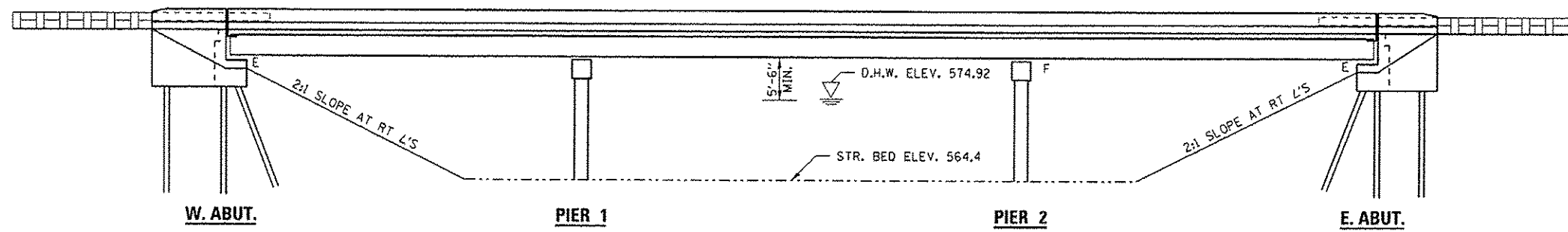
**GENERAL NOTES**

THIS STANDARD IS USED WHENEVER, AT ANY TIME, ANY VEHICLE, EQUIPMENT, WORKERS OR THEIR ACTIVITIES WILL ENCROACH ON ONE LANE OF A BRIDGE. TRAFFIC SIGNALS AND A POSITIVE BARRIER ARE REQUIRED.

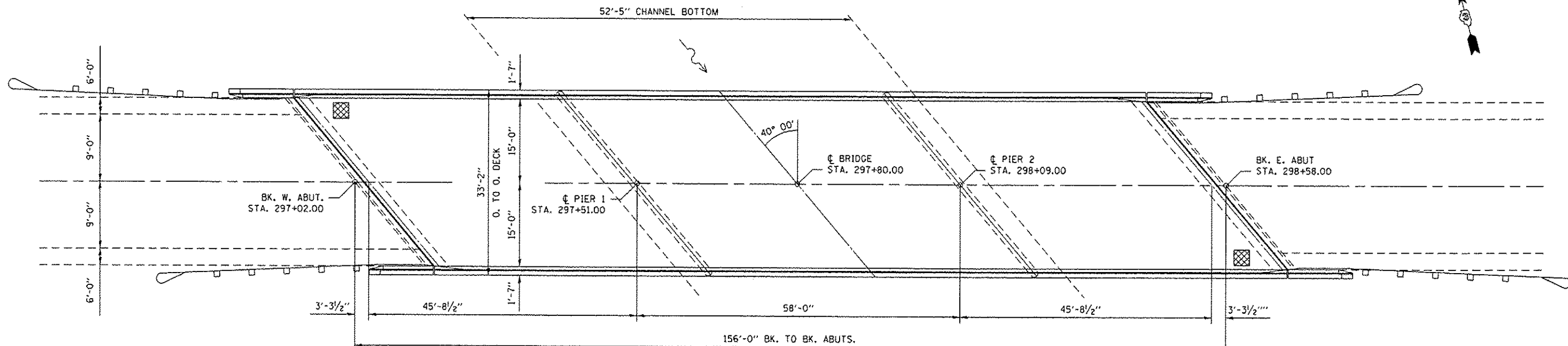
TRAFFIC SIGNALS SHALL BE OPERATIONAL ONLY WHEN ALL TRAFFIC CONTROLS ARE IN PLACE. WHEN TRAFFIC SIGNALS ARE NOT IN OPERATION, FLAGGERS SHALL BE USED AND TRAFFIC CONTROL SHALL CONFORM TO TRAFFIC CONTROL AND PROTECTION STANDARD 701201.

TEMPORARY CONCRETE BARRIER SHALL BE ACCORDING TO TRAFFIC CONTROL AND PROTECTION STANDARD 704001.

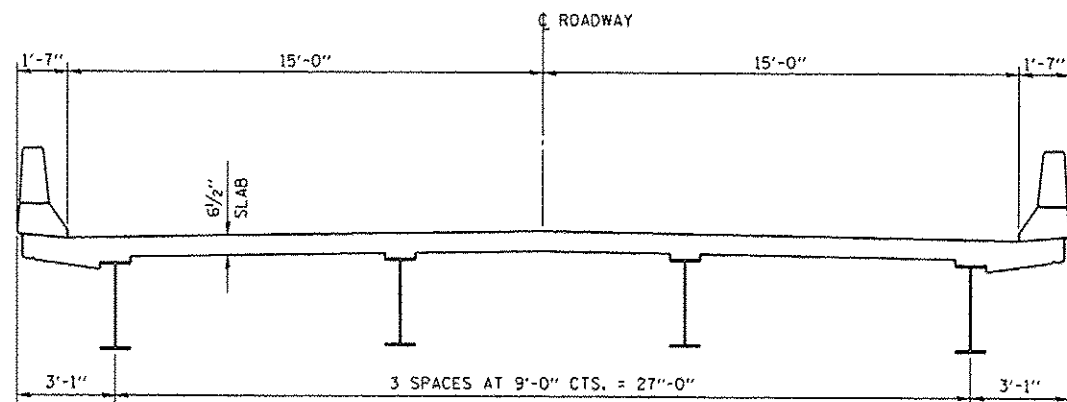
EXISTING OR TEMPORARY PAVEMENT MARKING SHALL BE ON BOTH SIDES OF THE OPEN LANE FROM STOP BAR TO STOP BAR.



**ELEVATION**



**PLAN**



**CROSS SECTION**

AIR MONITORS

**TOTAL BILL OF MATERIAL**

ITEM	UNIT	SUPER	SUB	TOTAL
CLEANING AND PAINTING STRUCTURAL STEEL, LOCATION 1	L SUM	1		1
CONTAINMENT AND DISPOSAL OF LEAD PAINT CLEANING RESIDUES NO. 1	L SUM	1		1
BRIDGE CLEANING AND PAINTING WARRANTY NUMBER 1	L SUM	1		1

**"FOR INFORMATION ONLY"**

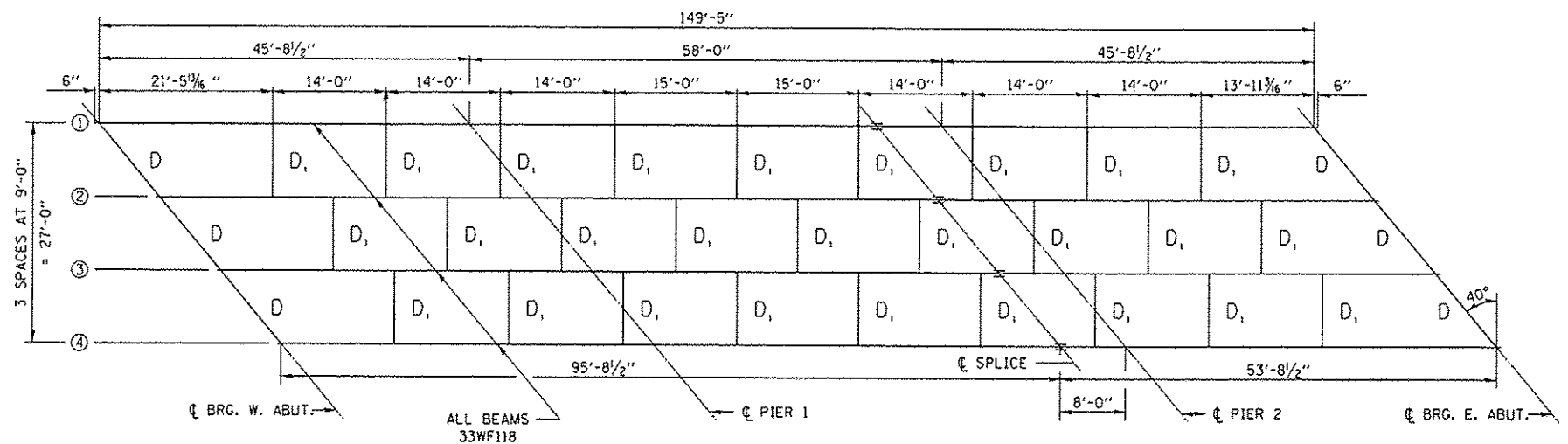
FILE NAME :	USER NAME :	DESIGNED -	REVISED -
c:\p\work\p\p\dot\spurlock\d8336411\030248-shc-details.dgn	spurlockd	OBS	-
PLOT SCALE :	CHECKED -	DRAWN -	REVISED -
1/8" = 1'-0"	-	OBS	-
PLOT DATE :	DATE -	CHECKED -	REVISED -
3/26/2013	MAR 2013	-	-

STATE OF ILLINOIS  
DEPARTMENT OF TRANSPORTATION

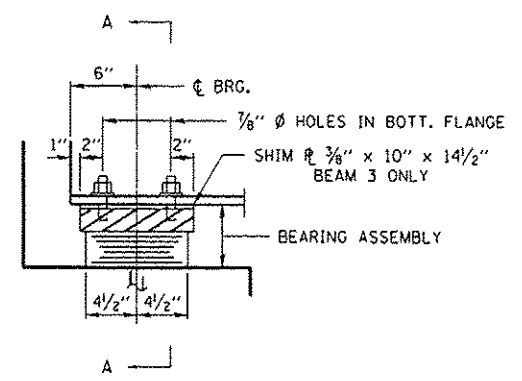
GENERAL PLAN  
FOR SN. 006-0137

SCALE: NONE SHEET 1 OF 2 SHEETS STA. TO STA.

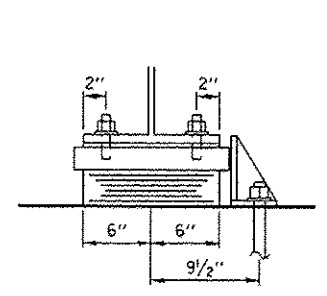
F.A.S. RTE.	SECTION	COUNTY	TOTAL SHEETS	SHEET NO.
2247	(13C-BR)BP	BUREAU	8	7
CONTRACT NO. 66C90			ILLINOIS FED. AID PROJECT	



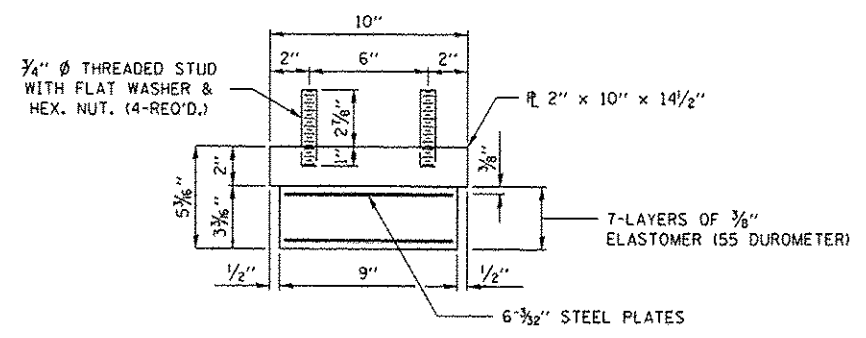
**FRAMING PLAN**



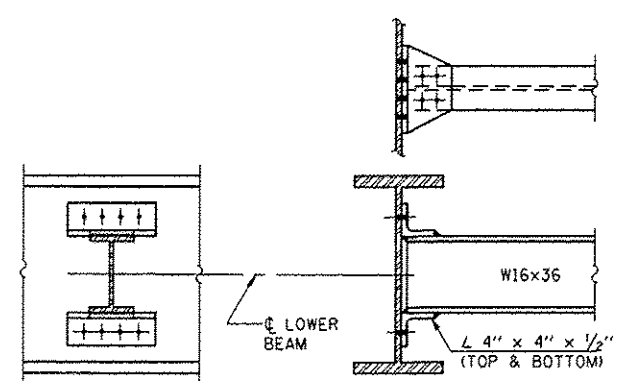
**SECTION AT ABUTS.**



**SECTION A-A**

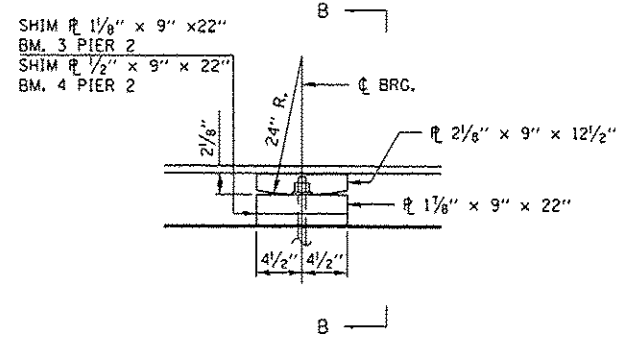


**BEARING ASSEMBLY**

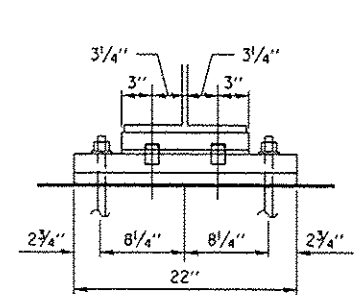


**DIAPHRAGMS D1 & D2**  
27 D, REQUIRED

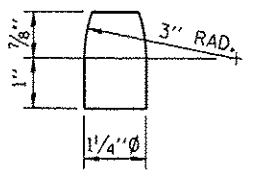
**TYPE I ELASTOMERIC EXP. BRG.**



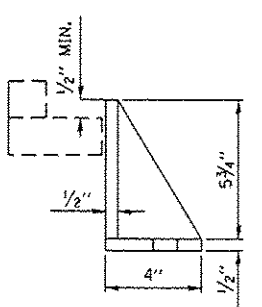
**ELEVATION AT PIERS**



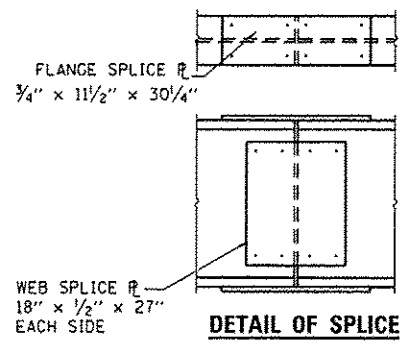
**SECTION B-B**



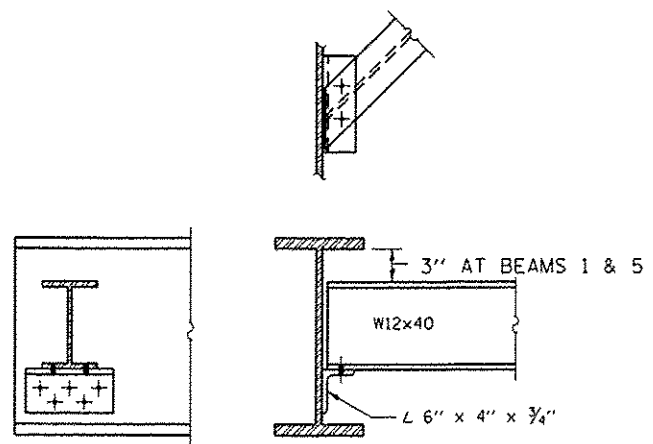
**PINTLE**



**SIDE RETAINER**



**DETAIL OF SPLICE**



**DIAPHRAGMS D**  
6 REQUIRED

**FIXED BEARING**

**"FOR INFORMATION ONLY"**

FILE NAME : c:\pwwork\pwwork\spurlack\d0033641\03666666.dgn	USER NAME : spurlack	DESIGNED - DBS	REVISED -	<b>STATE OF ILLINOIS DEPARTMENT OF TRANSPORTATION</b>	<b>STRUCTURAL STEEL DETAILS FOR SN. 006-0137</b>		F.A.S. RTG. 2247	SECTION (13C-BRIBP)	COUNTY BUREAU	TOTAL SHEETS 8	SHEET NO. 8	
Default	Default	DRAWN - DBS	REVISED -		SCALE: NONE	SHEET 2 OF 2 SHEETS	STA. TO STA.	CONTRACT NO. 66C90				
Default	Default	CHECKED -	REVISED -		ILLINOIS FED. AID PROJECT							
Default	Default	DATE - MAR 2013	REVISED -									