

F.A.S. RTE.	SECTION	COUNTY	TOTAL SHEETS	SHEET NO.
2370	(78-1HB-1)BP	PUTNAM	9	1
		ILLINOIS	CONTRACT NO. 66C91	

**STATE OF ILLINOIS**  
**DEPARTMENT OF TRANSPORTATION**  
**DIVISION OF HIGHWAYS**

**PROPOSED**  
**HIGHWAY PLANS**

**F.A.S. ROUTE 2370 (IL 26)**  
**SECTION (78-1HB-1)BP**

**CLEANING AND PAINTING STRUCTURAL STEEL**  
**STRUCTURE NO. 078-0010**  
**PUTNAM COUNTY**

C-93-086-13

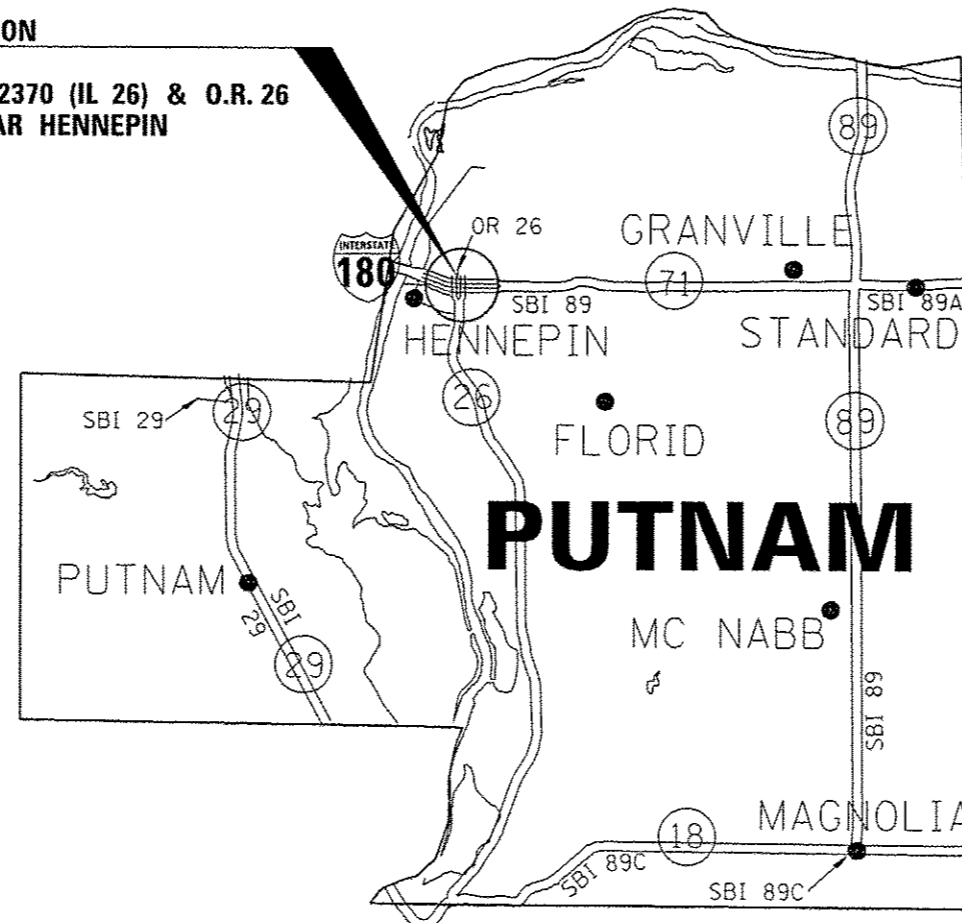
**INDEX OF SHEETS**

- 1 COVER SHEET
- 2 GENERAL NOTES
- 3 SUMMARY OF QUANTITIES
- 4 TYPICAL SECTIONS
- 5 TRAFFIC CONTROL AND PROTECTION STANDARD 701402 (SPECIAL)
- 6-8 EXISTING STRUCTURE PLANS

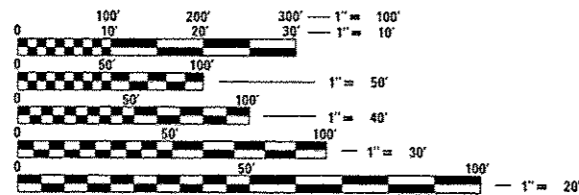
**STANDARDS**

- 000001-06 STANDARD SYMBOLS, ABBREVIATIONS AND PATTERNS
- 001006 DECIMAL OF AN INCH AND OF A FOOT
- 635011-2 REFLECTOR MARKER AND MOUNTING DETAILS
- 701101-03 OFF-ROAD OPERATIONS MULTILANE, 15' (4.5m) TO 24' (600m) FROM PAVEMENT EDGE
- 701106-02 OFF-ROAD OPERATIONS, MULTILANE, MORE THAN 15' (4.5m) AWAY
- 701400-06 APPROACH TO LANE CLOSURE, FREEWAY/EXPRESSWAY
- 701411-08 LANE CLOSURE, MULTILANE, AT ENTRANCE OR EXIT RAMP, FOR SPEEDS ≥ 45 MPH
- 701422-05 LANE CLOSURE, MULTILANE, FOR SPEEDS ≥ 45 MPH TO 55 MPH
- ~~701423-06 LANE CLOSURE, MULTILANE, WITH BARRIER, FOR SPEEDS ≥ 45 MPH TO 55 MPH~~
- 701426-05 LANE CLOSURE, MULTILANE INTERMITTENT OR MOVING OPERATION, FOR SPEEDS ≥ 45 MPH
- 701901-02 TRAFFIC CONTROL DEVICES
- 704001-07 TEMPORARY CONCRETE BARRIER
- 780001-03 TYPICAL PAVEMENT MARKINGS

**PROJECT LOCATION**  
**SN 078-0010**  
**CARRYING FAS 2370 (IL 26) & O.R. 26**  
**OVER I-180 NEAR HENNEPIN**



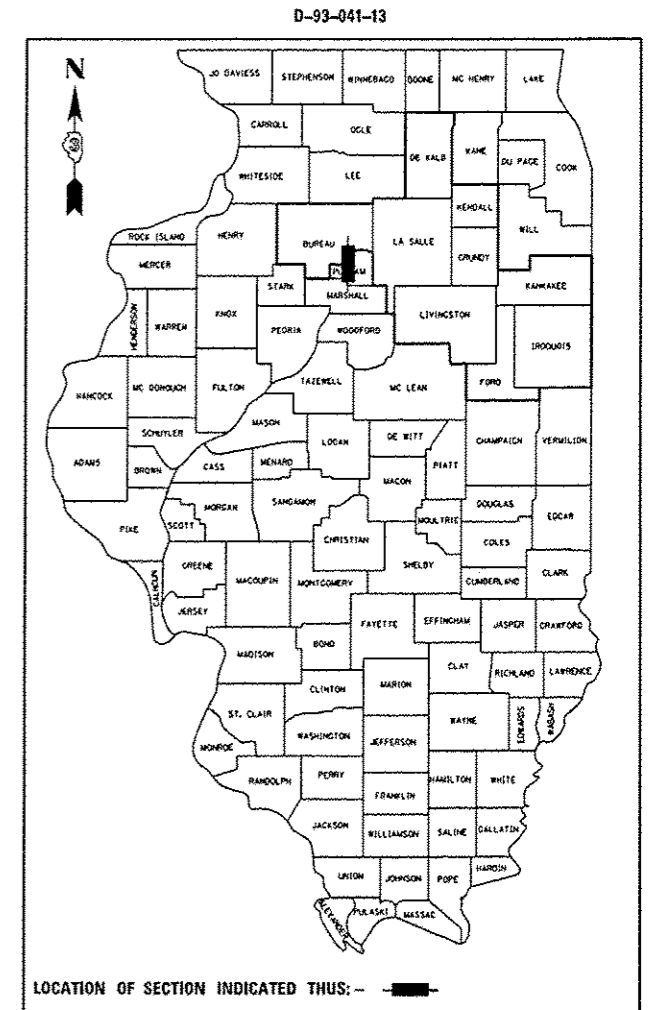
POINT LOCATION



FULL SIZE PLANS HAVE BEEN PREPARED USING STANDARD ENGINEERING SCALES. REDUCED SIZED PLANS WILL NOT CONFORM TO STANDARD SCALES. IN MAKING MEASUREMENTS ON REDUCED PLANS, THE ABOVE SCALES MAY BE USED.

J.U.L.I.E.  
 JOINT UTILITY LOCATION INFORMATION FOR EXCAVATION  
 1-800-892-0123  
 OR 811

DISTRICT 3 NO. (815) 434-6131  
 PROJECT ENGINEER: JOE KANNEL, P.E.  
 UNIT CHIEF: RON WOODSHANK  
 TOWNSHIP: HENNEPIN  
 CONTRACT NO. 66C91



**FUNCTIONAL CLASSIFICATION**

<b>RURAL MAJOR COLLECTOR</b>	<b>RURAL INTERSTATE</b>
FAS 2370 (IL 26)	FAI 180 (I-180)
2012 ADT = 1100	2011 ADT = 2650
P.V. = 91.82%	P.V. = 81.14%
M.U. = 2.73%	M.U. = 9.43%
S.U. = 5.45%	S.U. = 9.43%

STATE OF ILLINOIS  
 DEPARTMENT OF TRANSPORTATION  
 DIVISION OF HIGHWAYS

SUBMITTED 3/29/13  
*Paul A. Loebner*  
 DEPUTY DIRECTOR OF HIGHWAYS, REGION ENGINEER

April 26, 2013  
*John D. Baranzelli, P.E.*  
 ENGINEER OF DESIGN AND ENVIRONMENT

April 26, 2013  
*Omer Osman, P.E.*  
 DIRECTOR OF HIGHWAYS, CHIEF ENGINEER

**PRINTED BY THE AUTHORITY**  
**OF THE STATE OF ILLINOIS**