

SEC. 34, T20N, R8E, 3RD P.M.

- STATION 1856+88.56 3' LT PR FLUSH INLET BOX FOR MEDIAN (STD. 542546) TOP ELEV. = 792.91 INVERT ELEV. = 788.00

STA. 1857+01.44
EXISTING MEDIAN INLET BOX
EXISTING 48" RCCP
USFL 64' RT. = 787.64
DSFL 1' RT. = 787.58
EXISTING 48" RCCP
USFL 1' LT = 787.47
DSFL 68' LT = 787.14

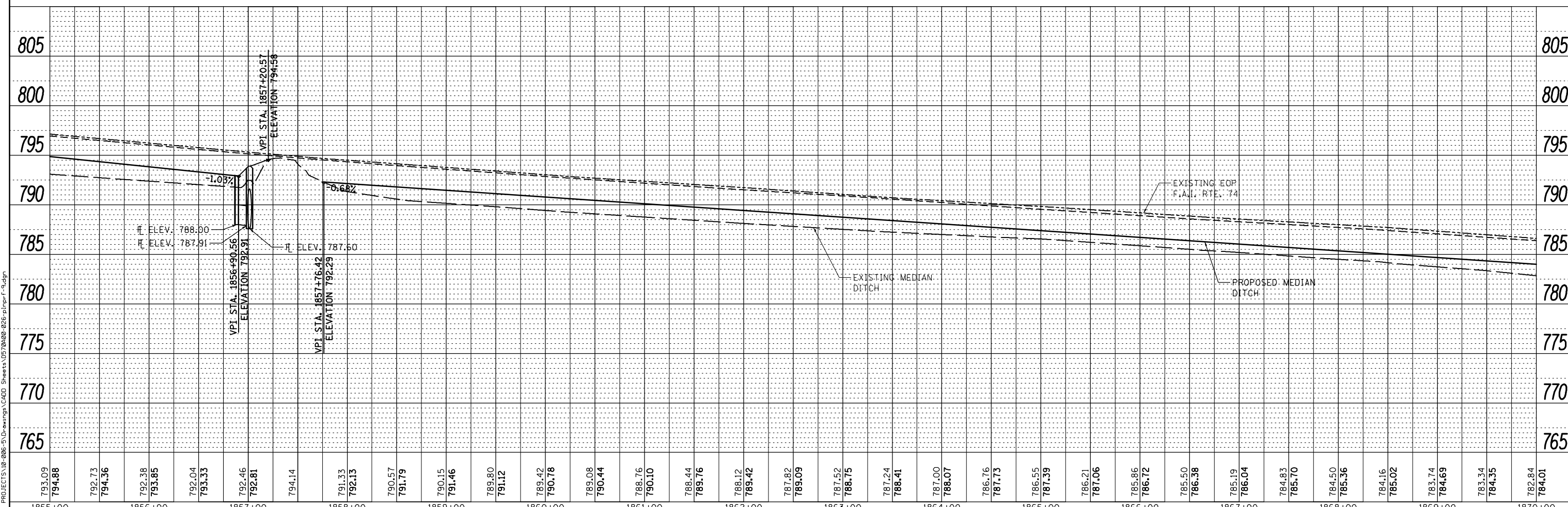
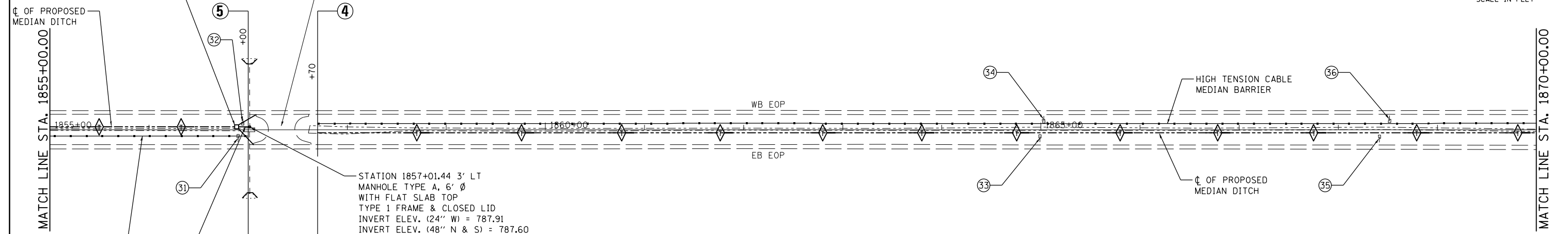
MEDIAN CROSSOVER
STA. 1857+30

STATION 1857+01.44 3' LT
MANHOLE TYPE A, 6' Ø
WITH FLAT SLAB TOP
TYPE 1 FRAME & CLOSED LID
INVERT ELEV. (24" W) = 787.91
INVERT ELEV. (48" N & S) = 787.60
RIM ELEV. = 793.91

MEDIAN INLET BOX REMOVAL
STATION 1857+01.44 - 1 EACH
(SEE SCHEDULE)

- TRANSITION SIDE SLOPES FROM 2' WIDE DITCH TO 4' WIDE, 10' FROM INLET

⊕ INDICATES PIPE UNDERDRAINS, 4" (SPECIAL)
SEE SCHEDULE



| | | |
|-----------|-----------|------|
| PLAN | SUBMITTED | DATE |
| NOTE BOOK | ALIGNED | |
| | CHECKED | |
| | FILED | |

| | | |
|-----------|-----------------------------|------|
| PROFILE | SUBMITTED | DATE |
| NOTE BOOK | GRADES CHECKED | |
| | STRUCTURE NOTATIONS CHECKED | |

F:\Projects\DOT PROJECTS\18-086-5\Drawings\CADD Sheets\0370400-026-pln-pr-f.dwg

McDonough-Whitlow, P.C.
Consulting Engineers & Land Surveyors
PROFESSIONAL DESIGN NO. 184-002754

| | | |
|------------------------------|----------------|-----------|
| USER NAME = Richard Heinke | DESIGNED - JAH | REVISED - |
| | DRAWN - RNH | REVISED - |
| PLOT SCALE = 100.0000' / in. | CHECKED - TMM | REVISED - |
| PLOT DATE = 3/7/2013 | DATE - | REVISED - |

STATE OF ILLINOIS
DEPARTMENT OF TRANSPORTATION

| | | | | | |
|-----------------|--|----------------------|--|------------------------------------|--|
| SCALE: 1" = 50' | | SHEET 9 OF 22 SHEETS | | STA. 1855+00.00 TO STA. 1870+00.00 | |
|-----------------|--|----------------------|--|------------------------------------|--|

PLAN & PROFILE
F.A.I. 74

| F.A.I. RTE. | SECTION | COUNTY | TOTAL SHEETS | SHEET NO. |
|--------------------|---------------------|-----------|---------------------------|-----------|
| 74 | MEDIAN CABLE 2013-1 | CHAMPAIGN | 119 | 26 |
| CONTRACT NO. 70A00 | | | ILLINOIS FED. AID PROJECT | |