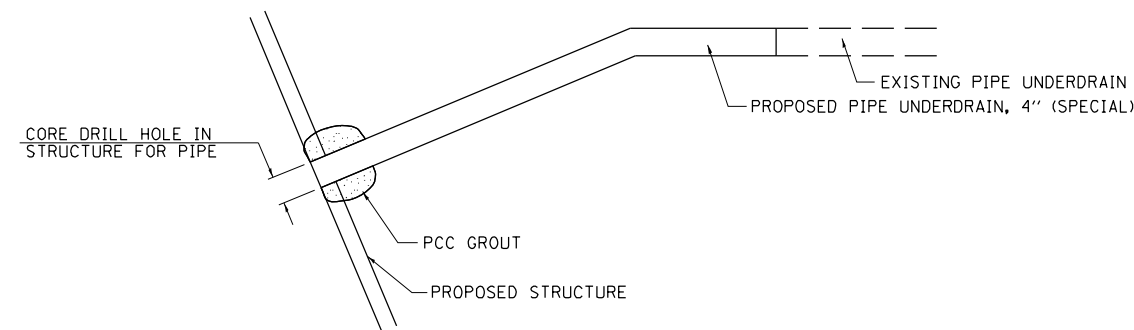
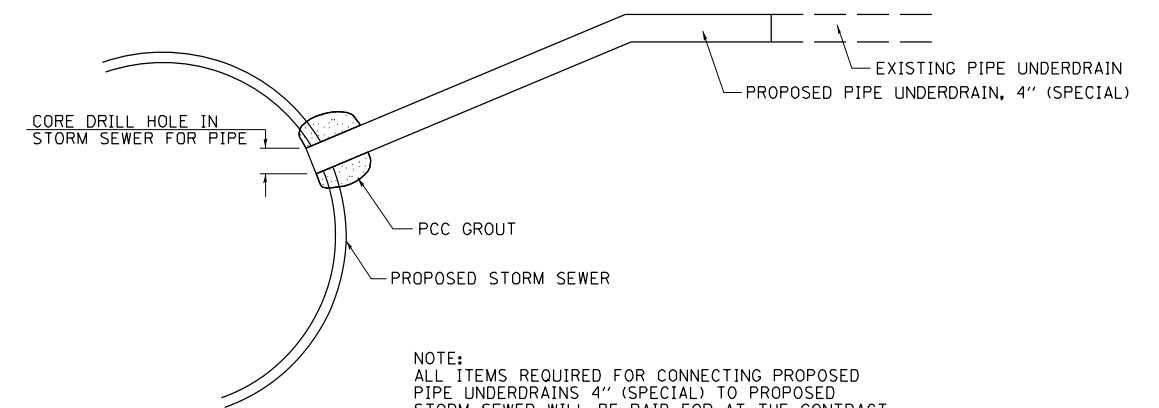


**UNDERDRAIN OUTLET
BELOW DITCH GRADE
TYPICAL DETAIL**



NOTE:
ALL ITEMS REQUIRED FOR CONNECTING PROPOSED
PIPE UNDERDRAINS 4" (SPECIAL) TO STRUCTURE
WILL BE PAID FOR AT THE CONTRACT UNIT PRICE
EACH FOR UNDERDRAIN CONNECTION TO STRUCTURE.

**DETAIL OF CONNECTING PIPE UNDERDRAINS
4" (SPECIAL) TO STRUCTURE**



NOTE:
ALL ITEMS REQUIRED FOR CONNECTING PROPOSED
PIPE UNDERDRAINS 4" (SPECIAL) TO PROPOSED
STORM SEWER WILL BE PAID FOR AT THE CONTRACT
UNIT PRICE EACH FOR CONNECTION TO EXISTING
SEWER.

**DETAIL OF CONNECTING PIPE UNDERDRAINS
4" (SPECIAL) TO PROPOSED STORM SEWER**

F:\Projects\DOT PROJECTS\10-006-5\Drawings\CADD Sheets\0570000-040-045-detailed.dgn

USER NAME = Richard Heinke	DESIGNED - JAH	REVISED -
	DRAWN - RNH	REVISED -
PLOT SCALE = 40.0000' / in.	CHECKED - TMM	REVISED -
PLOT DATE = 3/7/2013	DATE -	REVISED -

F.A.I. RTE.	SECTION	COUNTY	TOTAL SHEETS	SHEET NO.
74	MEDIAN CABLE 2013-1	CHAMPAIGN	119	40
CONTRACT NO. 70A00			ILLINOIS FED. AID PROJECT	