

**STATE OF ILLINOIS**  
**DEPARTMENT OF TRANSPORTATION**  
**DIVISION OF HIGHWAYS**  
**PROPOSED**  
**HIGHWAY PLANS**

F.A. RTE.	SECTION	COUNTY	TOTAL SHEETS	SHEET NO.
VAR.	.	**	15	1
		ILLINOIS	CONTRACT NO. 70A24	

• SHOULDER REPAIR FY2013-2  
 •• DOUGLAS & EDGAR

D-95-010-13



LOCATION OF SECTION INDICATED THUS: - [shaded area]

FOR INDEX OF SHEETS, SEE SHEET NO. 2  
 FOR SUMMARY OF QUANTITIES, SEE SHEET NO. 6

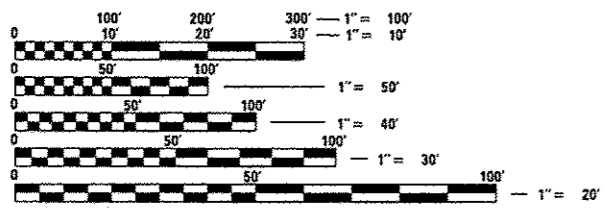
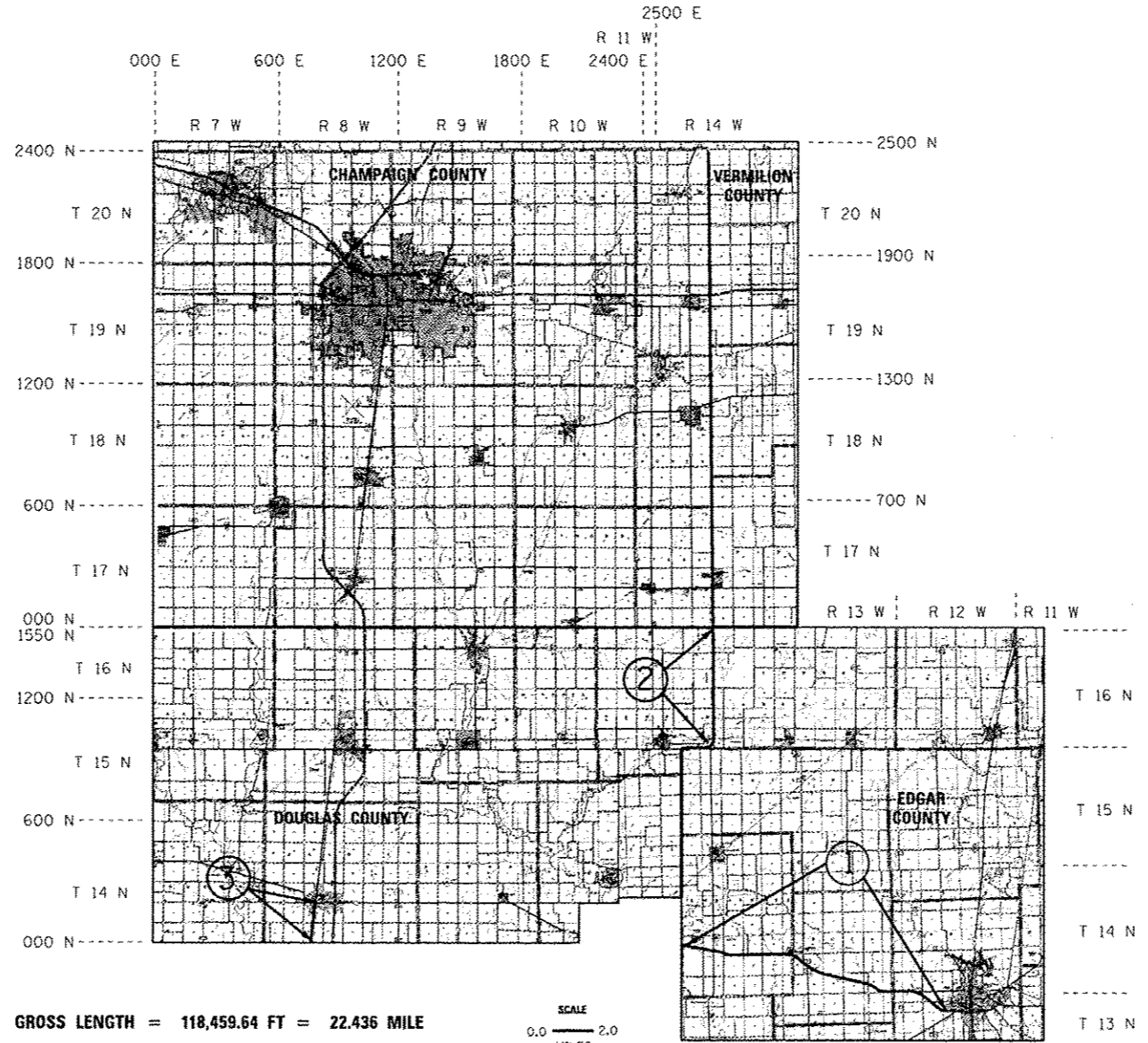
**CURRENT TRAFFIC DATA**

- LOCATION #1: F.A.P. RTE. 749 / (IL. 133)  
 FROM W. EDGE OF PARIS TO EDGAR / COLES COUNTY LINE  
 AVERAGE ADT = 1,700
- LOCATION #2: F.A.P. RTE. 836 / (IL. 49)  
 FROM U.S. 36 TO CHAMPAIGN COUNTY LINE  
 AVERAGE ADT = 800
- LOCATION #3: F.A.P. RTE. 824 / (U.S. 45)  
 FROM U.S. 133 IN ARCOLA TO DOUGLAS / COLES COUNTY LINE  
 AVERAGE ADT = 2,800

**VARIOUS ROUTES**  
**SECTION SHOULDER REPAIR FY2013-2**  
**EAST FIELD AREA - AGGREGATE SHOULDER REPAIR**  
**DOUGLAS & EDGAR COUNTIES**

C-95-010-13

SEE PAGES 3-5 FOR LOCATION MAPS, GROSS & NET LENGTHS OF PROJECT BY LOCATION



FULL SIZE PLANS HAVE BEEN PREPARED USING STANDARD ENGINEERING SCALES. REDUCED SIZED PLANS WILL NOT CONFORM TO STANDARD SCALES. IN MAKING MEASUREMENTS ON REDUCED PLANS, THE ABOVE SCALES MAY BE USED.

J.U.L.I.E.  
 JOINT UTILITY LOCATION INFORMATION FOR EXCAVATION  
 1-800-892-0123  
 OR 811

PROJECT ENGINEER : JASON STULTS  
 PHONE NUMBER: (217)-465-4181

CONTRACT NO. 70A24

GROSS LENGTH = 118,459.64 FT = 22.436 MILE  
 NET LENGTH = 117,707.29 FT = 22.293 MILE

SCALE  
 0.0 — 2.0  
 MILES

STATE OF ILLINOIS  
 DEPARTMENT OF TRANSPORTATION  
 DIVISION OF HIGHWAYS

SUBMITTED MARCH 18 2013  
*Joseph E. Crowe*  
 DEPUTY DIRECTOR OF HIGHWAYS, REGION ENGINEER/CPE

April 26 2013  
*John D. Baranzoni, PE*  
 acting ENGINEER OF DESIGN AND ENVIRONMENT

April 26 2013  
*Omer Osman, PE/BL*  
 DIRECTOR OF HIGHWAYS, CHIEF ENGINEER

**PRINTED BY THE AUTHORITY  
 OF THE STATE OF ILLINOIS**