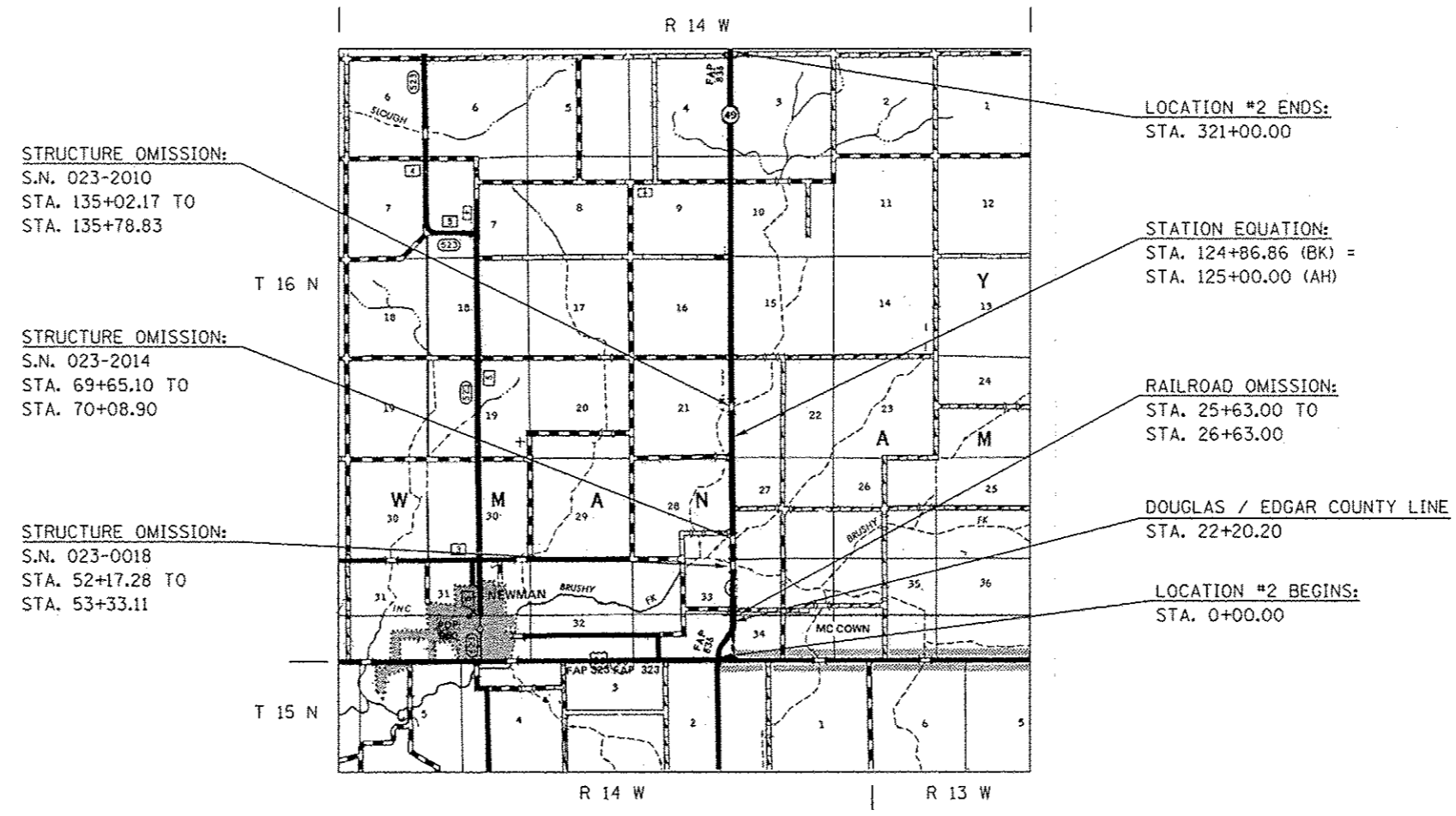


LOCATON MAP #2
F.A.P. ROUTE 836 (IL. 49)
FROM U.S. 36 TO CHAMPAIGN COUNTY LINE
EDGAR & DOUGLAS COUNTY / RURAL 2 LANE



STRUCTURE OMISSION:
 S.N. 023-2010
 STA. 135+02.17 TO
 STA. 135+78.83

STRUCTURE OMISSION:
 S.N. 023-2014
 STA. 69+65.10 TO
 STA. 70+08.90

STRUCTURE OMISSION:
 S.N. 023-0018
 STA. 52+17.28 TO
 STA. 53+33.11

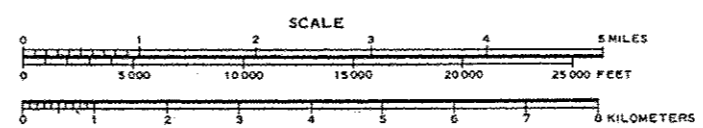
LOCATION #2 ENDS:
 STA. 321+00.00

STATION EQUATION:
 STA. 124+86.86 (BK) =
 STA. 125+00.00 (AH)

RAILROAD OMISSION:
 STA. 25+63.00 TO
 STA. 26+63.00

DOUGLAS / EDGAR COUNTY LINE
 STA. 22+20.20

LOCATION #2 BEGINS:
 STA. 0+00.00



TOWNSHIPS:
 NEWMAN &
 YOUNG AMERICA



GROSS LENGTH OF LOCATION #2 = 32,086.86 FT = 6.077 MILES
 NET LENGTH OF LOCATION #2 = 31,750.57 FT = 6.013 MILES

•SHOULDER REPAIR FY2013-2
 ** DOUGLAS & EDGAR

FILE NAME : c:\p\work\p\id\l\ceer-lock_jd\0336898\0	USER NAME : ceer-lock_jd 70A24-shr-Location_Map.dgn	DESIGNED -	REVISED -	STATE OF ILLINOIS DEPARTMENT OF TRANSPORTATION	LOCATION MAP #2 F.A.P. ROUTE 836 (IL. 49)	F.A. RTE. VAR.	SECTION -	COUNTY **	TOTAL SHEETS 15	SHEET NO. 4
#MODELNAME#	PLOT SCALE = 40.0000 / 1"=40' PLOT DATE = 3/20/2013	DRAWN -	REVISED -	SCALE: SHEET 1 OF 1 SHEETS STA. TO STA.		CONTRACT NO. 70A24			ILLINOIS FED. AID PROJECT	