

F.A. RTE.	SECTION	COUNTY	TOTAL SHEETS	SHEET NO.
VAR.	D6 PAINTING 2013-1	ADAMS/PIKE	16	1
		ILLINOIS	CONTRACT NO. 72G07	

STATE OF ILLINOIS
DEPARTMENT OF TRANSPORTATION
DIVISION OF HIGHWAYS

**PROPOSED
HIGHWAY PLANS**

VARIOUS ROUTES
SECTION D6 PAINTING 2013-1

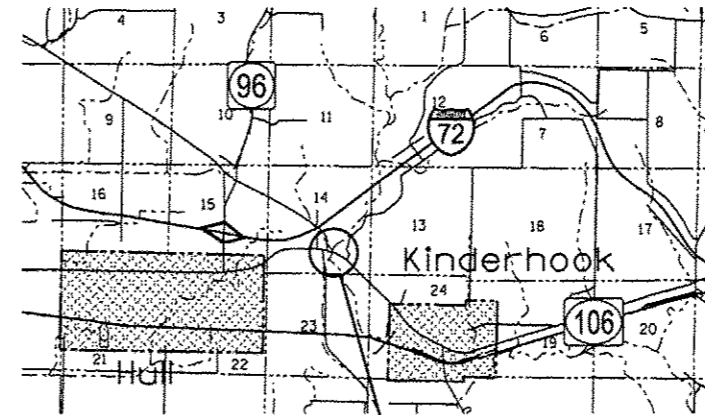
BRIDGE PAINTING
ADAMS & PIKE COUNTIES

C-96-040-13

FOR INDEX OF SHEETS, SEE SHEET NO. 2

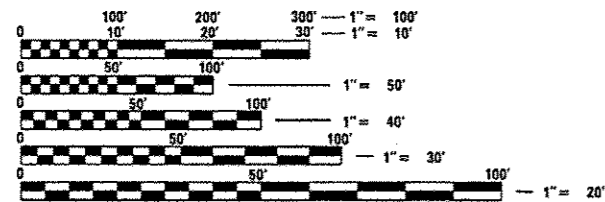
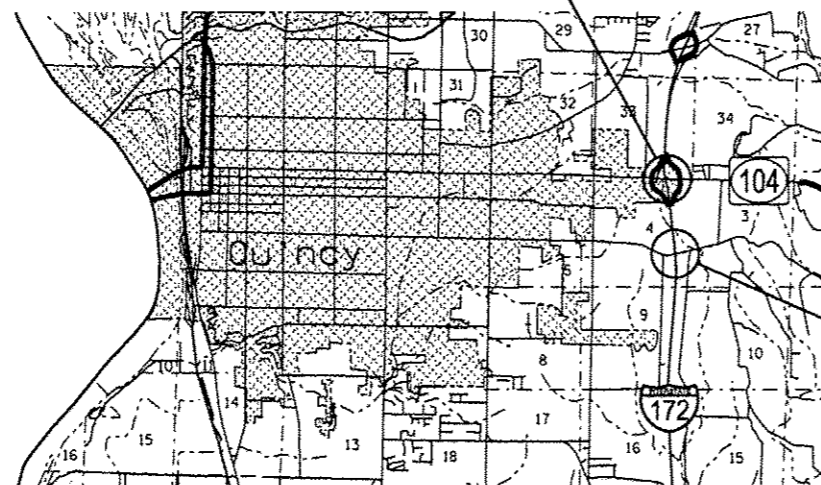


LOCATION #2
SN 001-0047
IL 104 OVER I-172
N 39 56' 5.46"
W 91 19' 31.15"
ADT = 7600



LOCATION #3
SN 075-0076
IL 96/106 OVER McCRANEY CREEK
N 39 42' 56.77"
W 91 10' 25.35"
ADT = 2150

LOCATION #1
SN 001-0046
CHS OVER I-172
N 39 55' 27.54"
W 91 19' 23.88"
ADT = 3650



FULL SIZE PLANS HAVE BEEN PREPARED USING STANDARD ENGINEERING SCALES. REDUCED SIZED PLANS WILL NOT CONFORM TO STANDARD SCALES. IN MAKING MEASUREMENTS ON REDUCED PLANS, THE ABOVE SCALES MAY BE USED.

J.U.L.I.E.
JOINT UTILITY LOCATION INFORMATION FOR EXCAVATION
1-800-892-0123
OR 811

BRIDGE INSPECTION ENGINEER
DAVE COPENBARGER (217) 785-5306

NET LENGTH = 828 FT. = 0.16 MILE

CONTRACT NO. 72G07

STATE OF ILLINOIS
DEPARTMENT OF TRANSPORTATION
DIVISION OF HIGHWAYS

SUBMITTED March 21 20 13
Regan Smith
DEPUTY DIRECTOR OF HIGHWAYS, REGION ENGINEER

April 26 20 13
John D. Baramelli, P.E.
ENGINEER OF DESIGN AND ENVIRONMENT

April 26 20 13
Omer Osman, P.E.
DIRECTOR OF HIGHWAYS, CHIEF ENGINEER

PRINTED BY THE AUTHORITY
OF THE STATE OF ILLINOIS