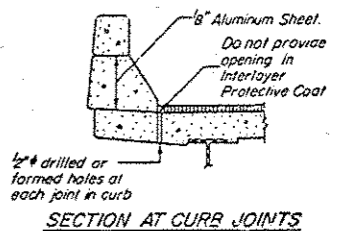
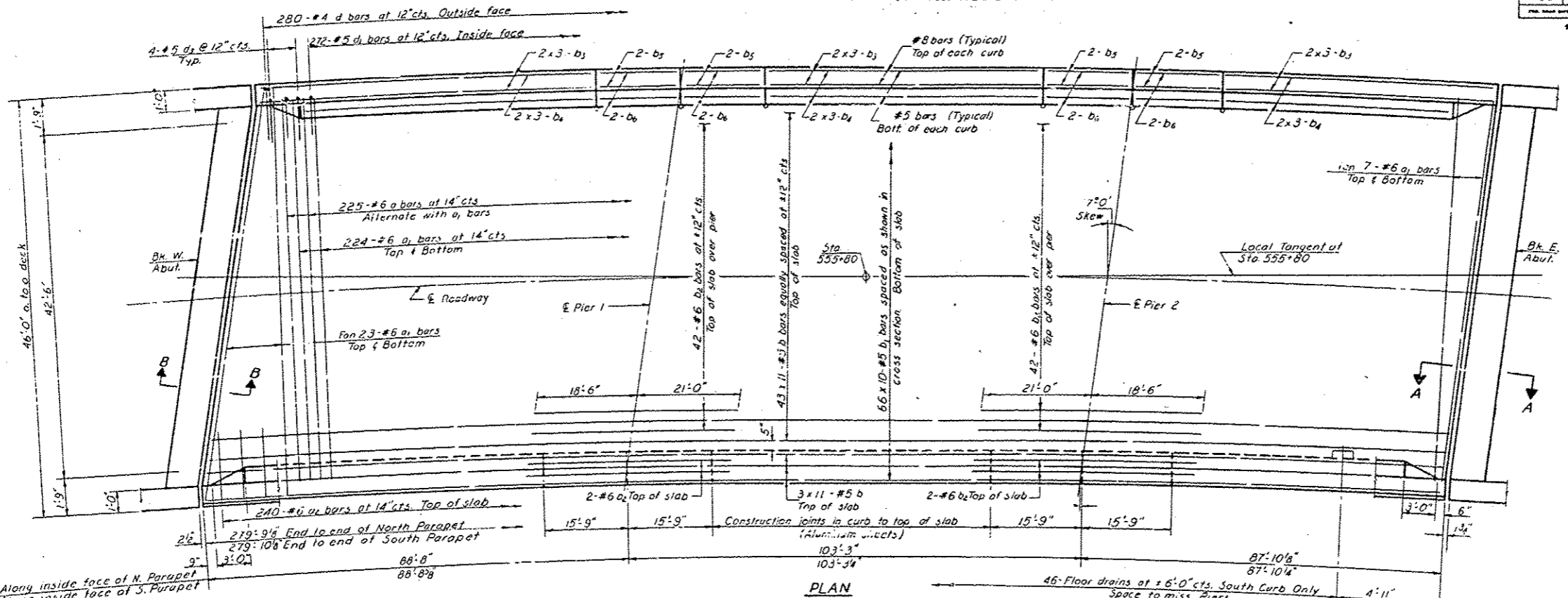


STATE OF ILLINOIS  
DEPARTMENT OF TRANSPORTATION

DATE	SECTION	COUNTY	TOTAL SHEETS	SHEET NO.
11/13	36	PIKE	17	42

16 SHEETS

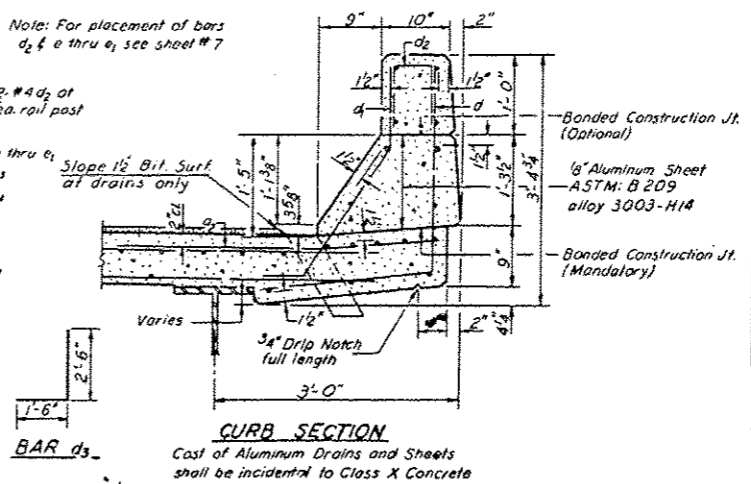
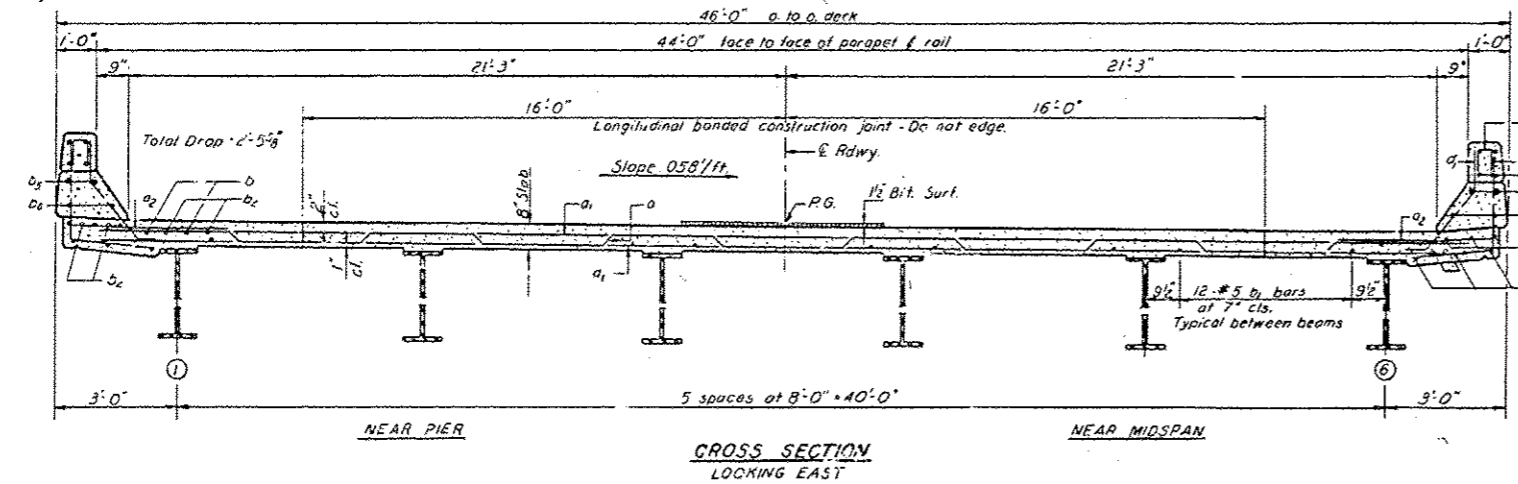
\* 14X-1, 14X-2, RS-2, 14B-1



Note: For Sec A-A & Sec B-B see Sheet # 8

BILL OF MATERIAL

Bar	No.	Size	Length	Shape
a	225	#6	46'-0"	
a <sub>1</sub>	224	#6	44'-3"	
a <sub>2</sub>	180	#6	4'-0"	
b	539	#5	26'-6"	
b <sub>1</sub>	660	#5	29'-3"	
b <sub>2</sub>	52	#6	39'-6"	
b <sub>3</sub>	36	#8	25'-8"	
b <sub>4</sub>	36	#5	25'-0"	
b <sub>5</sub>	16	#8	15'-6"	
b <sub>6</sub>	16	#5	15'-6"	
d	560	#4	4'-6"	J
d <sub>1</sub>	544	#5	3'-7"	J
d <sub>2</sub>	136	#4	2'-1"	J
d <sub>3</sub>	16	#5	4'-0"	J
Reinforcement Bars			Lbs.	86100
Class X Concrete			Cu. Yds.	376.5



The lengths and quantities of longitudinal reinforcement and Class X Concrete in parapets are not included in above quantities. See sheet # 7

DESIGNED: J.P. [Signature]

CHECKED: J.P. [Signature]

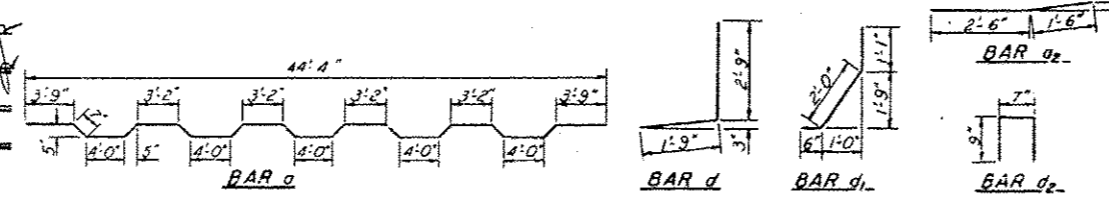
DRAWN: J.P. [Signature]

CHECKED: JNP

EXAMINED: [Signature]

PASSED: [Signature]

APPROVED: [Signature]



SUPERSTRUCTURE  
F.A. RT. 36 SEC. 14B-1  
PIKE COUNTY  
STATION 555+80

FOR INFORMATION ONLY